

RI Ocean Special Area Management Plan

Overview of the Ocean SAMP Commercial and Recreational Fisheries Resources and Uses Chapter



David Beutel, Sarah Smith, and Tiffany Smythe
RI Coastal Resources Management Council and
URI Coastal Resources Center/RI Sea Grant
May 4, 2010

Presentation Overview



- Chapter objectives
- Major findings
- Methodology
- Chapter highlights
- Policies and standards

Major Findings

- Commercial and recreational fisheries are of great economic, social, and cultural value to the state of RI.
- These activities are dependent upon key finfish, shellfish, and crustacean resources and the habitats upon which they rely.
- Over the course of a year, the entire SAMP area is used by commercial and recreational fishermen.
- Existing and future uses of the SAMP area may have an effect on fisheries resources and uses, and adverse effects must be mitigated to the extent possible through SAMP policies and standards.



The Ocean SAMP Approach to Fisheries

Ocean SAMP Objectives:

- To manage ocean space
- In this space, manage existing resources and uses within the context of potential future uses
- Summarize the best available data and information on resources/uses in the SAMP area
- Address the issues and concerns of stakeholders and users to the extent possible

Fisheries Chapter Objectives

- Provide baseline data and information on:
 - fisheries resources
 - commercial and recreational fisheries activities
- Highlight the economic, social and cultural importance of fisheries
- Outline policies and standards to protect and promote fisheries resources and activities



Chapter Methodology

The background of the slide is a photograph of several fishing boats docked at a pier. The boats are large and have complex rigging, including masts and cranes. The water is blue, and the sky is clear. The text is overlaid on a semi-transparent white box on the right side of the image.

- Stakeholder and federal/ state agency input
- Review of other “reference” documents
- Literature and data review
- Data analysis and mapping
 - Baseline characterization
 - Fisheries activity mapping

Chapter Table of Contents

1. *Marine fisheries resources in the SAMP area*
 - Commercially and recreationally targeted species
 - Baseline characterization
2. *Fish habitat in the SAMP area*
3. *Commercial and recreational fisheries*
 - History and ports
 - Fisheries descriptions and fishing area maps
 - Effort and landings
4. *Economic impact of commercial and recreational fishing*
5. *Impact of existing activities and trends on fisheries resources and habitats*
6. *Policies and standards*
7. *Appendices*

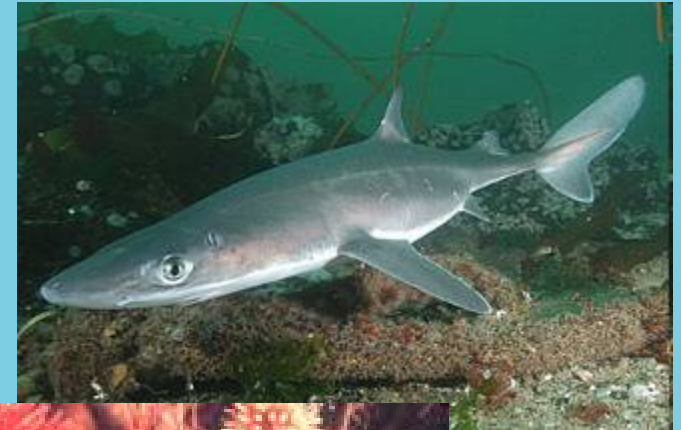
Species Included in this Chapter: Commercially and Recreationally Important Species

- American lobster
- Atlantic bonito
- Atlantic cod
- Atlantic herring
- Atlantic mackerel
- Atlantic sea scallop
- Black sea bass
- Bluefish
- Butterfish
- False albacore
- Goosefish (monkfish)
- Longfin squid
- Scup

- Shark, Blue
- Shark, Shortfin mako
- Shark, Thresher
- Silver hake
- Skates
- Striped bass
- Summer flounder
- Tautog
- Tuna, Bluefin
- Tuna, Yellowfin
- Winter flounder
- Yellowtail flounder

Other Species Included in this Chapter

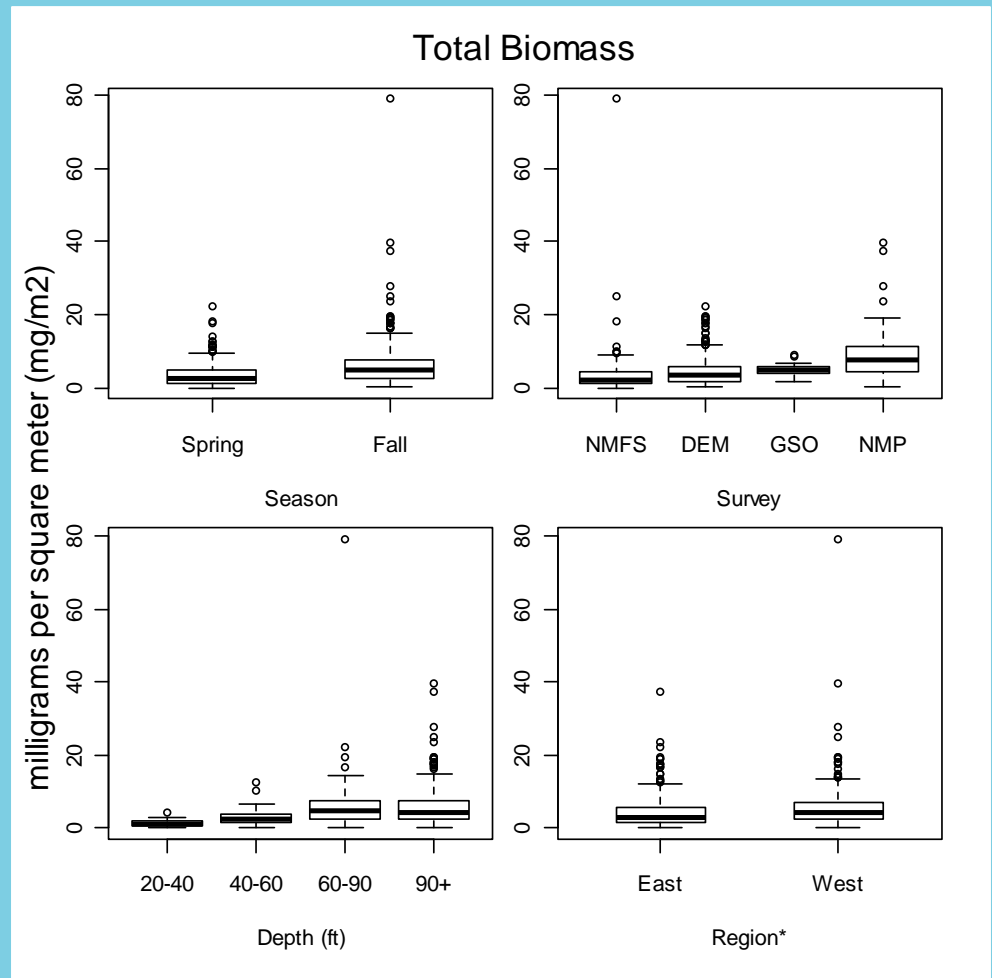
- RI DEM Quota-Managed Species
- Threatened & Endangered Species/ "Species of Concern"
 - NMFS Northeast Regional Office Protected Resources Division



Baseline Characterization


(Bohaboy, Collie, and Malek, 2010)

- Aggregate existing trawl survey datasets, 1999-2008
- Characterize abundance and distribution of fisheries resources throughout area
- *Not* stock assessment
- *Not* a site or project-specific assessment








AGGREGATE FISH BIOMASS, SPRING

Map Key

 OceanSAMP Study Area

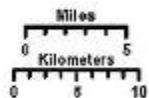
 State Waters

Total Biomass, Spring mg/m²

-  < 2.4
-  2.4 - 2.9
-  2.9 - 5.3
-  5.3 - 17.5
-  17.5 - 79.0

Data Source

-  NEAMAP
-  NMFS
-  RI DEM
-  URI GSO



Coordinate System:

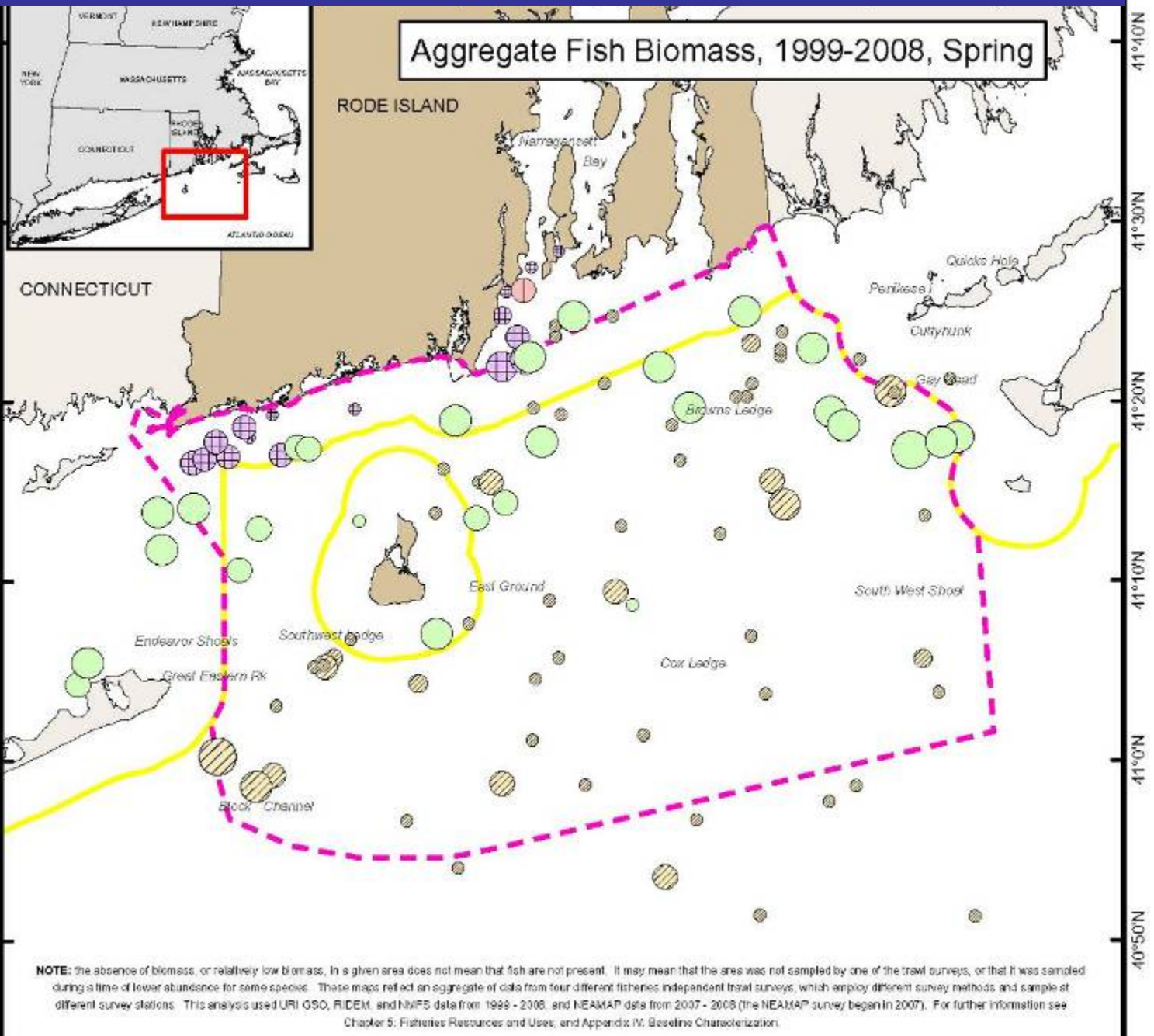
Projection: RI Stateplane
Units: Feet
FIPS Zone: 3800
Datum: NAD83

Map Base Data:

State Borders: RIGIS, MAGIS, CTOIS
SAMP Study Area: RI SAMP Database
State Waters: MMS SLA Boundary
Bathymetry: Interpolated from NOS Soundings

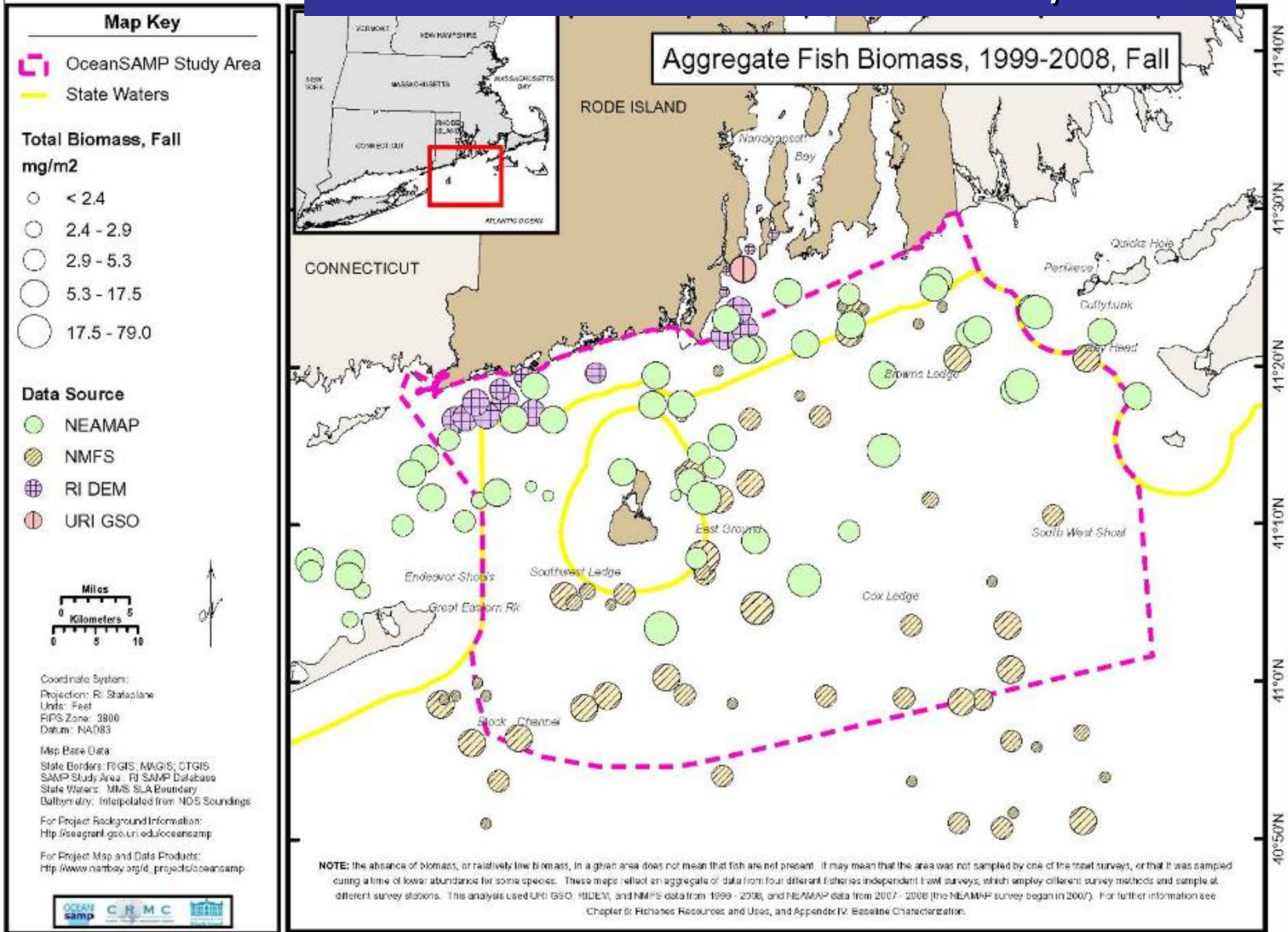
For Project Background Information:
<http://sea Grant.gso.uri.edu/oceansamp>

For Project Map and Data Products:
http://www.norbay.org/rd_projects/oceansamp



NOTE: the absence of biomass, or relatively low biomass, in a given area does not mean that fish are not present. It may mean that the area was not sampled by one of the trawl surveys, or that it was sampled during a time of lower abundance for some species. These maps reflect an aggregate of data from four different fisheries independent trawl surveys, which employ different survey methods and sample at different survey stations. This analysis used URI GSO, RIDEM, and NMFS data from 1999 - 2008, and NEAMAP data from 2007 - 2008 (the NEAMAP survey began in 2007). For further information see Chapter 5: Fisheries Resources and Uses, and Appendix IV: Baseline Characterization.

AGGREGATE FISH BIOMASS, FALL

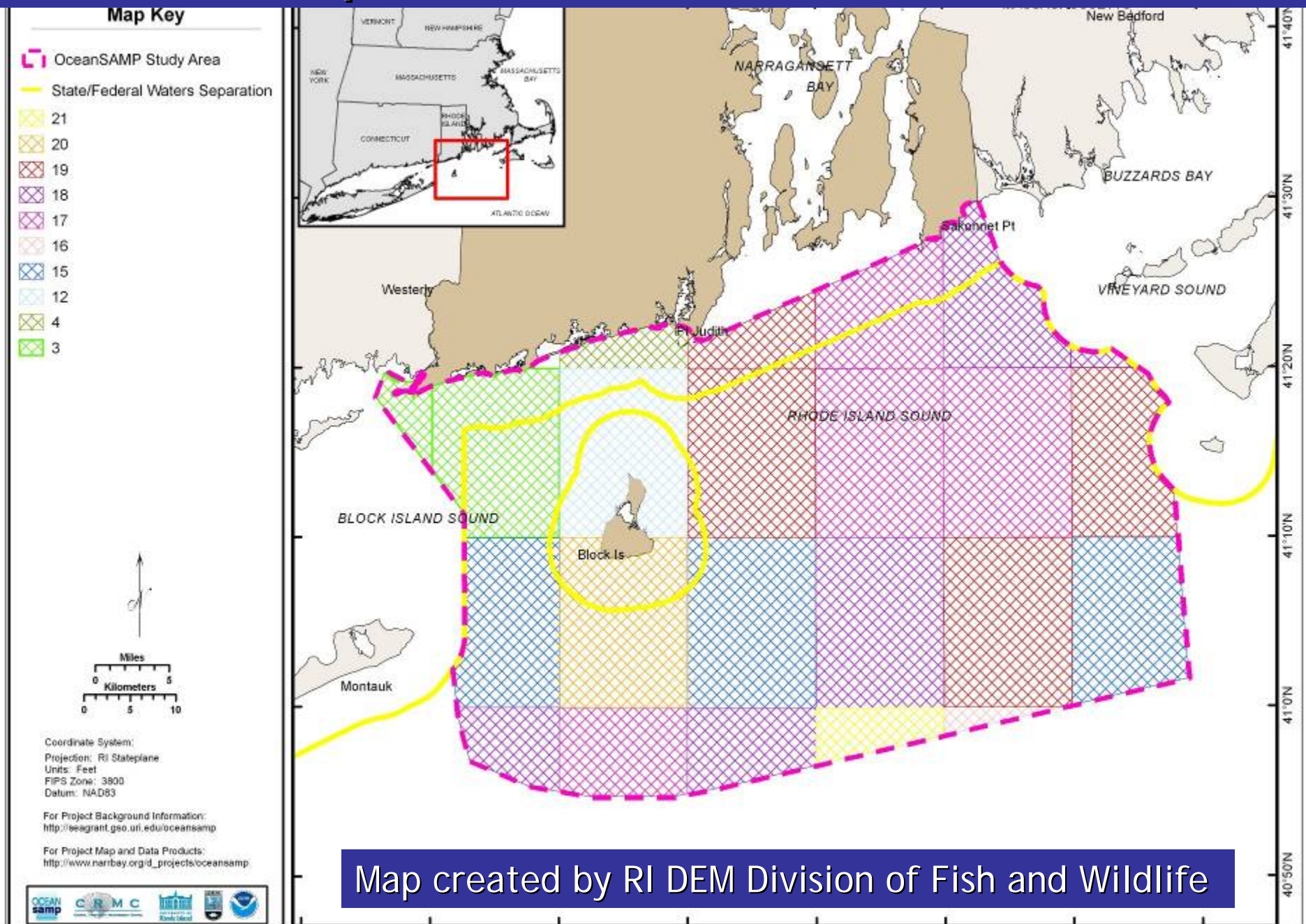


Fish Habitat

- Ecology chapter
- King/Collie fisheries habitat study: results forthcoming; will be incorporated in future revisions
- Habitat requirements for species of importance
- No designated fish "Critical Habitat" in SAMP Area
- Designated "Essential Fish Habitat" in SAMP Area



Number of Species with Essential Fish Habitat

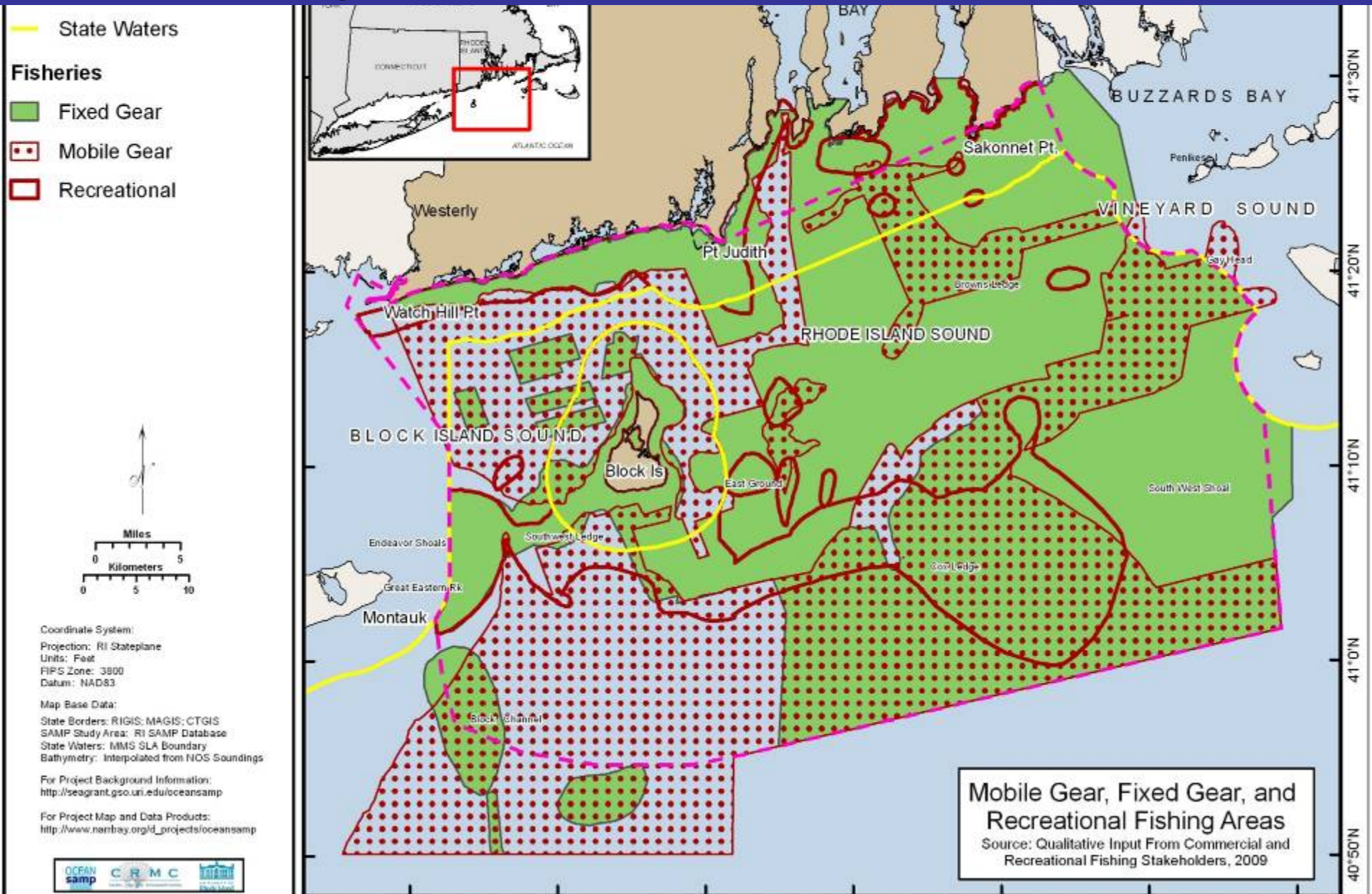


For both commercial and recreational fisheries....

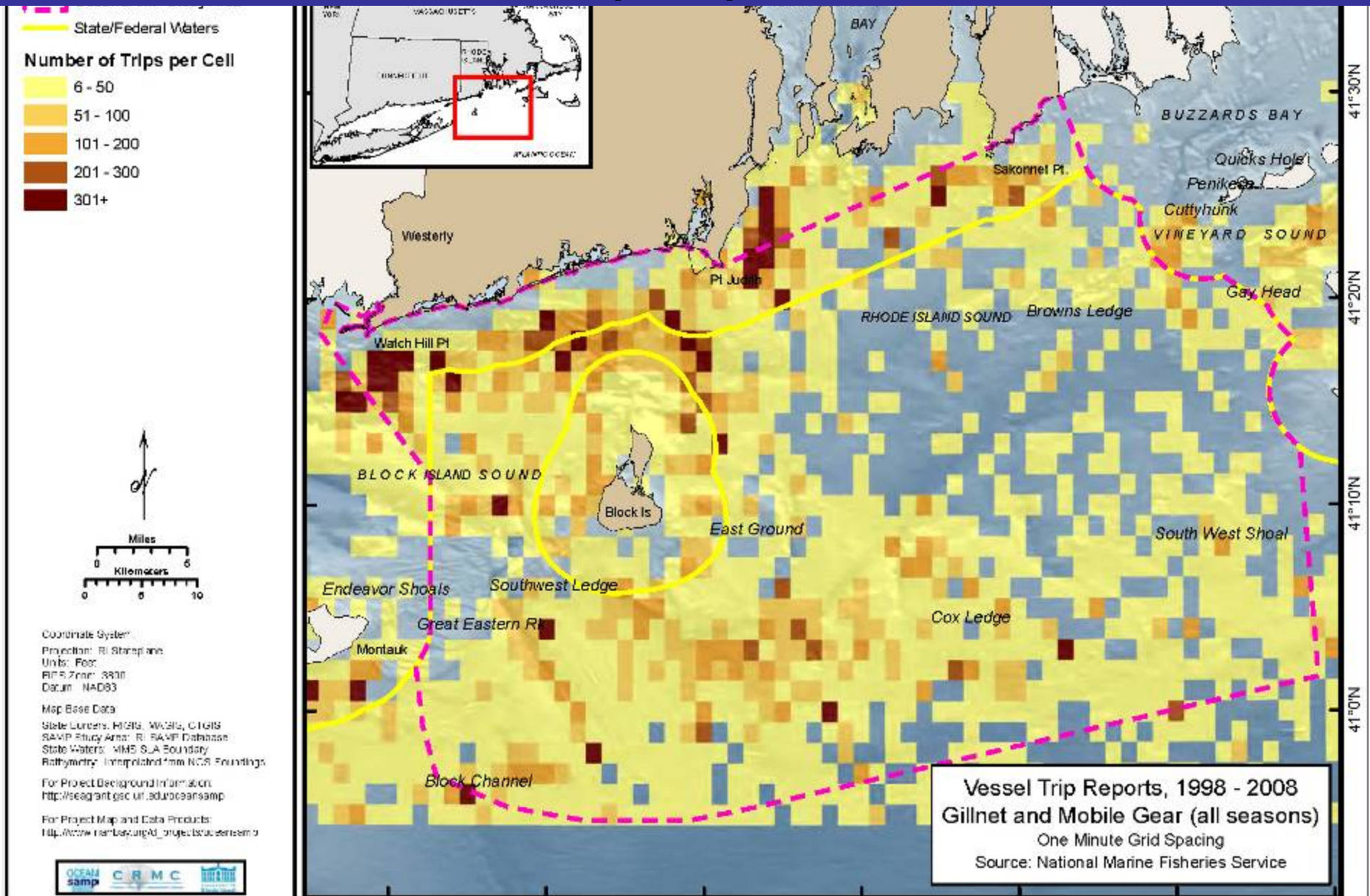
- History
- Ports
- Descriptions
- Fishing Area Maps



Mobile Gear, Fixed Gear, and Recreational Fishing Areas Based on Qualitative Input




Mobile Gear and Gillnet Fishing Areas Based on NMFS Vessel Trip Reports, 1998-2008




Gillnet Fishing Areas, Summer

Map Key


 OceanSAMP Study Area


 State/Federal Waters

Number of Trips per Cell

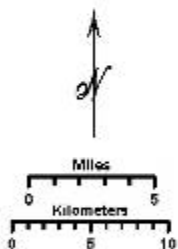
 6 - 50

 51 - 100

 101 - 200

 201 - 300

 301+



Coordinate System:

Projection: RI Stateplane

Units: Feet

FIPS Zone: 3800

Datum: NAD83

Map Data:

State Borders: RIGIS; MAGIS; DTG 3

SAMP Study Area: RI SAMP Database

State Waters: HMS SLA Boundary

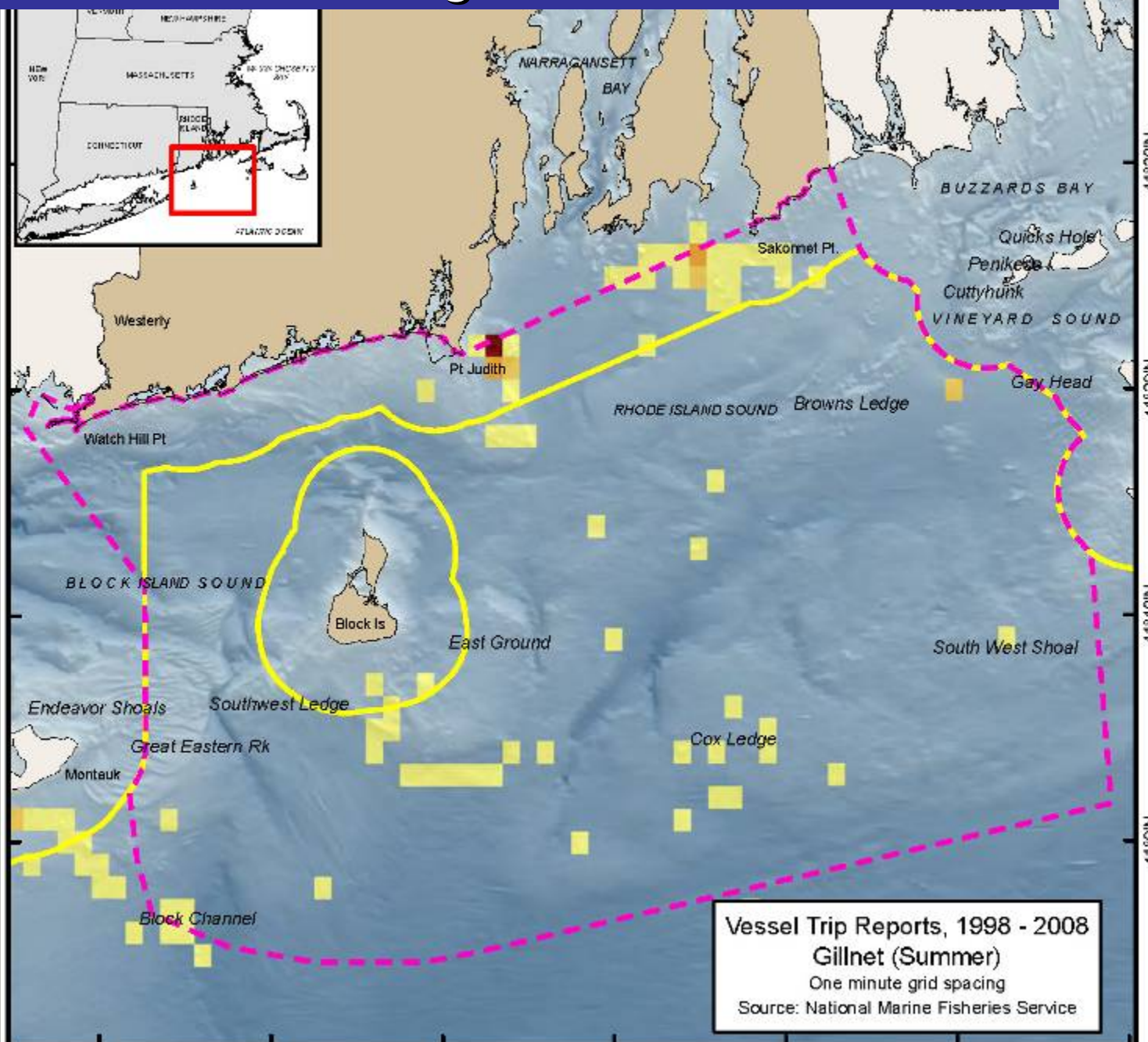
Bathymetry: Interpolated from WOS Soundings

For Project Background Information:

<http://designer1.gso.um.edu/seasamp>

For Project Map and Data Products:

<http://www.narrbay.org/projects/oceansamp>



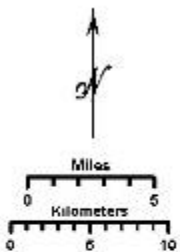
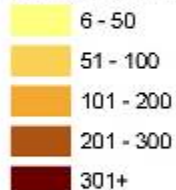
Bottom Trawling Areas, Winter

Map Key

 OceanSAMP Study Area

 State/Federal Waters

Number of Trips per Cell



Coordinate System:

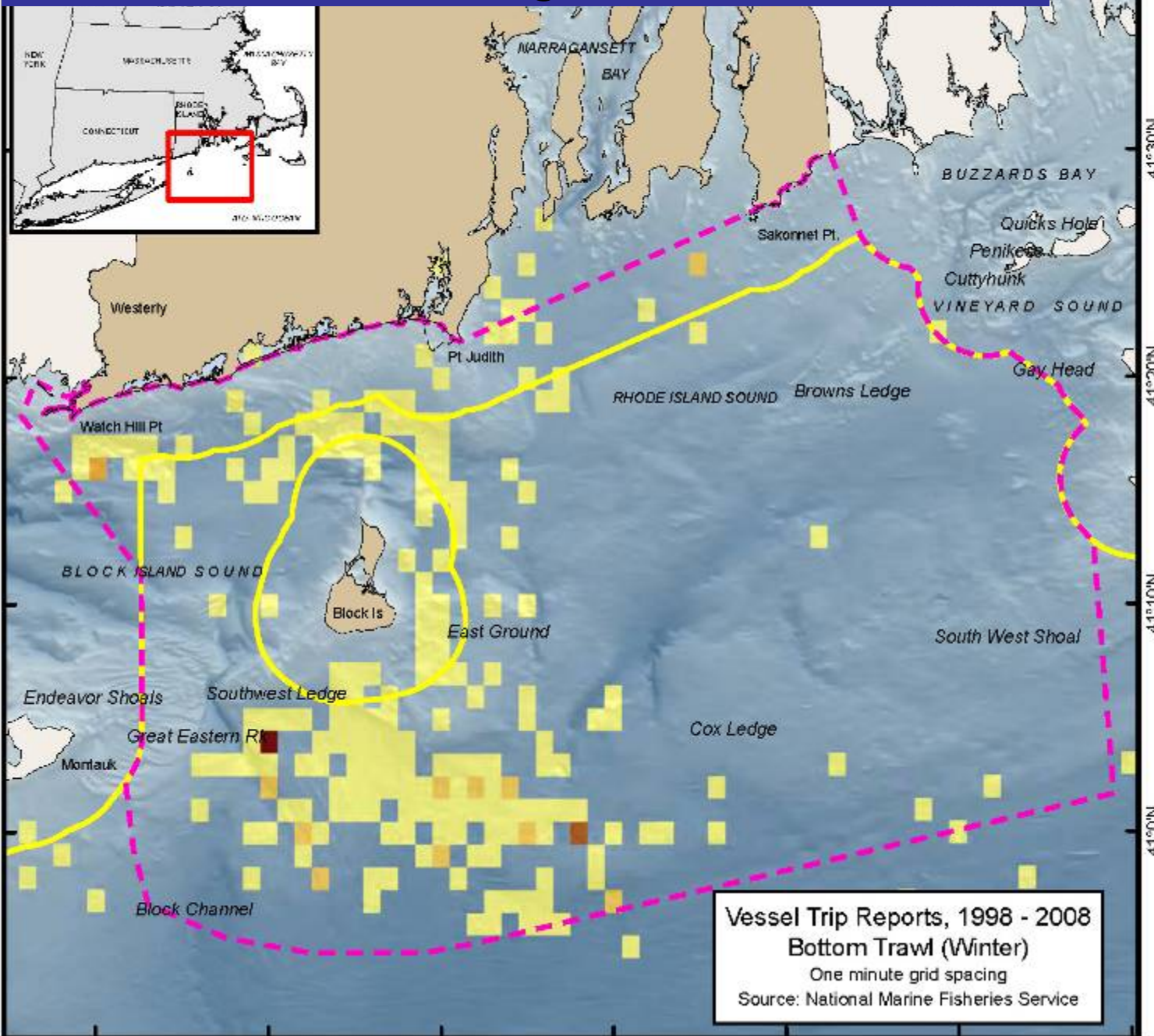
Projection: H. Sphermerc
Units: Feet
FIPS Zone: 3800
Datum: NAD83

Map Base Data:

State Borders: RIGS; MAGIS; CTGIS
SAMP Study Area: RI SAMP Database
State Waters: MMS SLA Boundary
Bathymetry: Interpolated from NOS Soundings

For Project Background Information:
<http://scagart.gov/ri/oceansamp>

For Project Map and Data Products:
http://www.namby.org/ri_projects/oceansamp

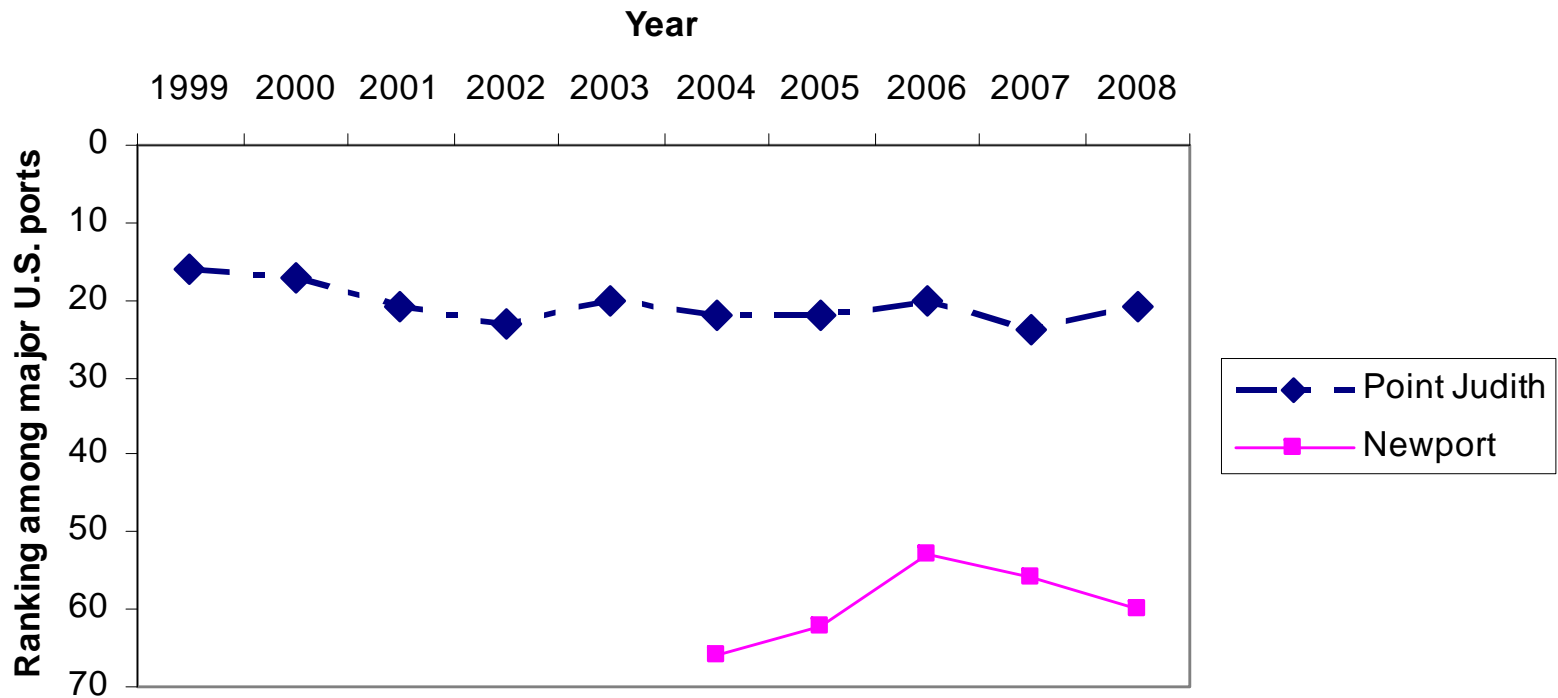


Vessel Trip Reports, 1998 - 2008
Bottom Trawl (Winter)
One minute grid spacing
Source: National Marine Fisheries Service

Commercial Fishery Landings (Weight)

Ranking by Pounds of Commercial Fishery Landings at Major U.S. Ports

(No data available for Newport 1999-2003)

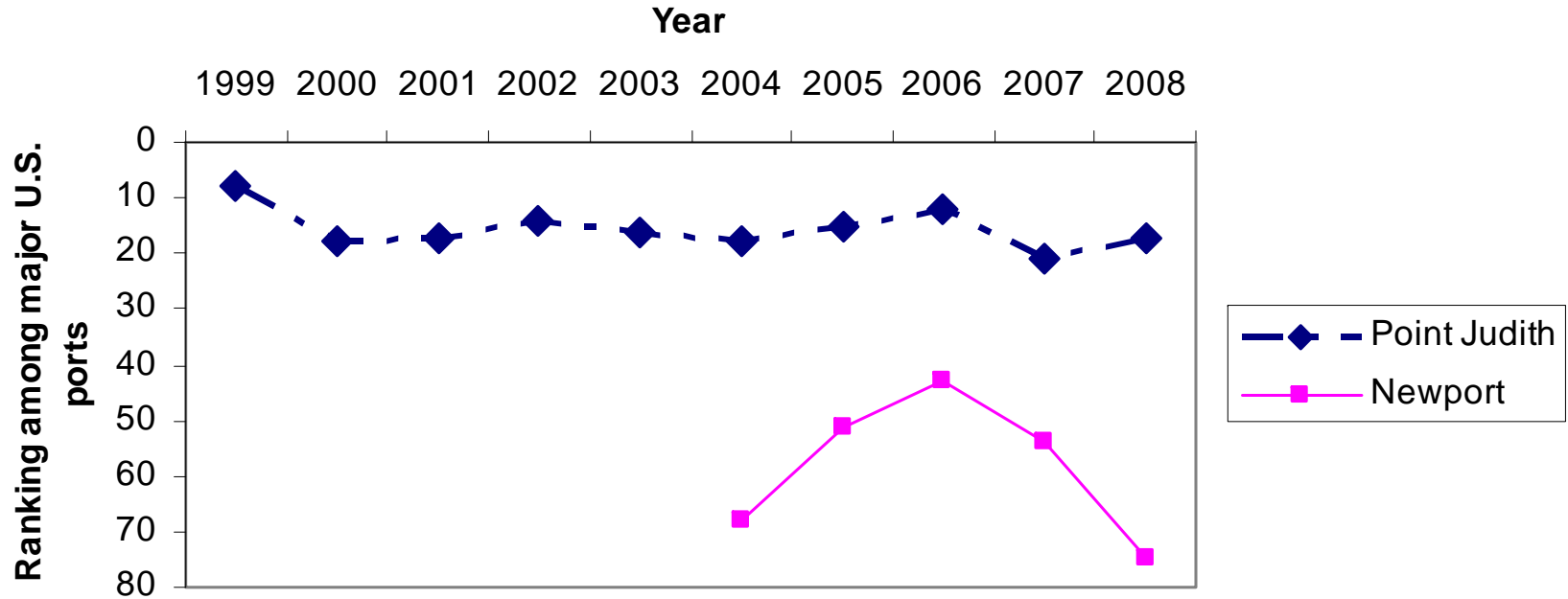


Data: NMFS, 2010

Commercial Fishery Landings (Value)

Ranking by Dollar Value of Commercial Fishery Landings at Major U.S. Ports

(No data available for Newport 1999-2003)

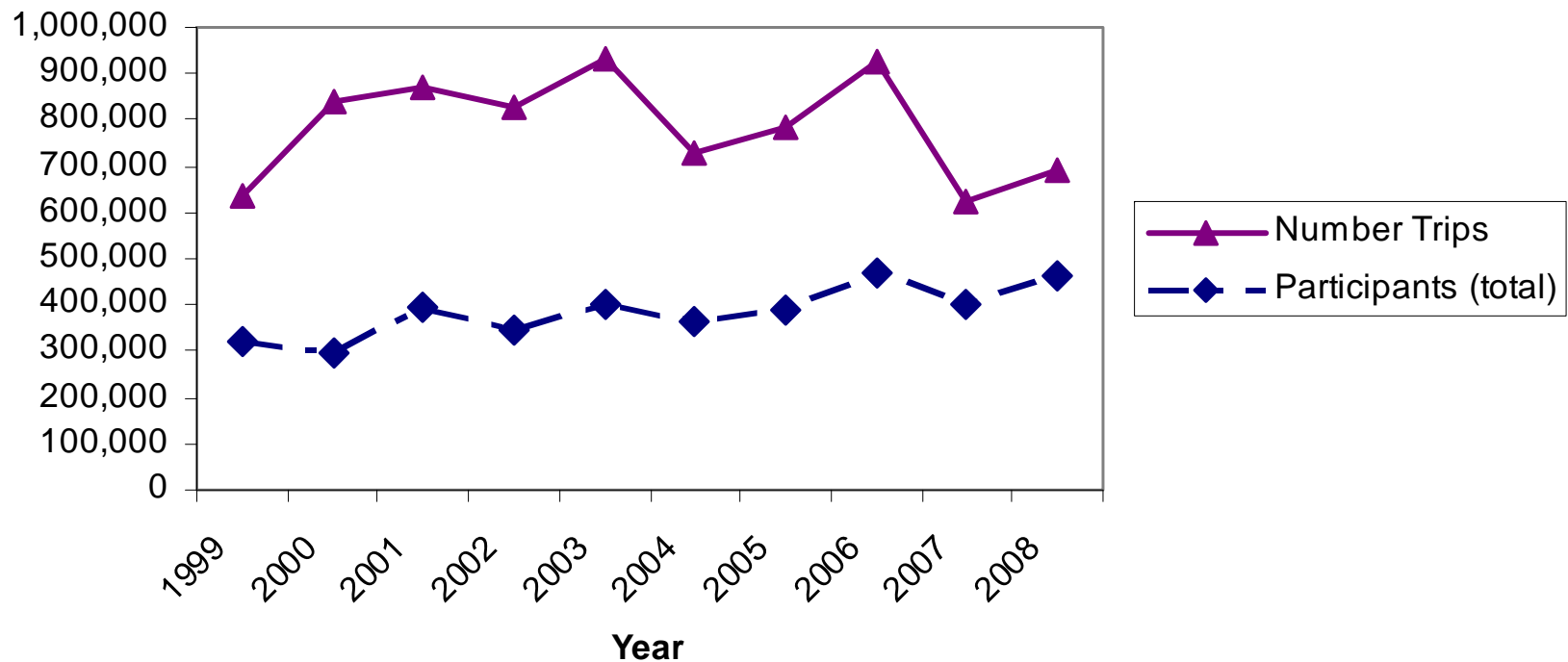


Data: NMFS, 2010

Recreational Fishing Effort

Estimated Recreational Fishing Trips and Participants, 1999-2008

(Excludes Narragansett Bay)

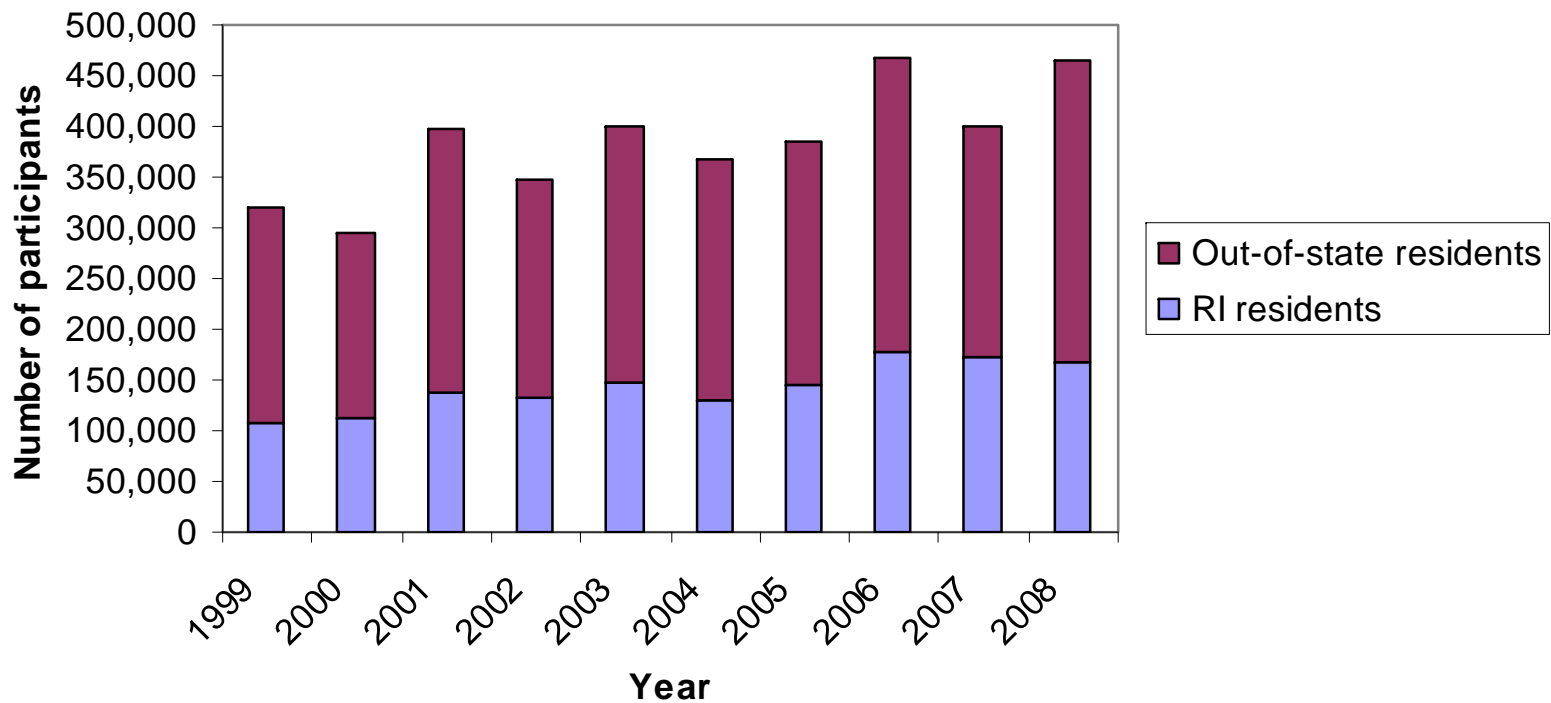


Data: NMFS, 2010

Recreational Fishing Participation

**Estimated Recreational Fishing Participants by Residency,
1999-2008**

(Excludes Narragansett Bay)



Impacts of Existing Activities and Trends on Fisheries Resources and Habitats

- Fishing activities
- Coastal development
- Introduced species
- Marine transportation
- Dredged material disposal
- Marine debris
- Marine fisheries diseases
- Global climate change



Policies and Standards

- Value of commercial and recreational fisheries
- Dynamic nature of fisheries
- Important fish habitats and fishing areas
- Offshore construction
- Fishing access
- Site-specific studies for future projects

Review Process and Next Steps

1. Preliminary review with fisheries experts, regulatory agencies, and fisheries stakeholders
2. TAC review
3. Informal public comment period

NEXT....

4. CRMC Ocean SAMP Subcommittee
5. 30-day public comment period

Thank you!

David Beutel

(401) 783-3370

dbeutel@crmc.ri.gov

Sarah Smith

(401) 874-6493

ssmith29@mail.uri.edu

Tiffany Smythe

(401) 874-6197

tsmythe@crc.uri.edu

Acknowledgements:

Erin Bohaboy, Jeremy Collie,
and Anna Malek, URI
Graduate School of
Oceanography

Chris Damon and staff,
URI Environmental
Data Center

Fisheries stakeholders

DEM, NMFS, and other
partner agencies

Fisheries TAC

- Atlantic States Marine Fisheries Commission
- New England Fishery Management Council
- NMFS Northeast Regional Office
- RI Department of Environmental Mgmt.
- RI Sea Grant Fisheries
- Save the Bay
- Conservation Law Foundation
- The Nature Conservancy
- Commercial Fisheries Research Foundation
- URI GSO
- RI Lobstermen's Assn.
- RI Commercial Fishermen's Assn.
- RI Fishermen's Alliance
- RI Party and Charter Boat Assn.
- RI Saltwater Anglers Assn.
- RI Monkfishermen's Assn.
- Ocean State Aquaculture Assn.
- Ocean State Fishermen's Assn.
- Sakonnet Point Fishermen's Assn.
- Eastern NE Scalloper's Assn.