

Ocean SAMP:
Submerged Historic Sites in the
Vicinity of Block Island

Rod Mather and John Jensen

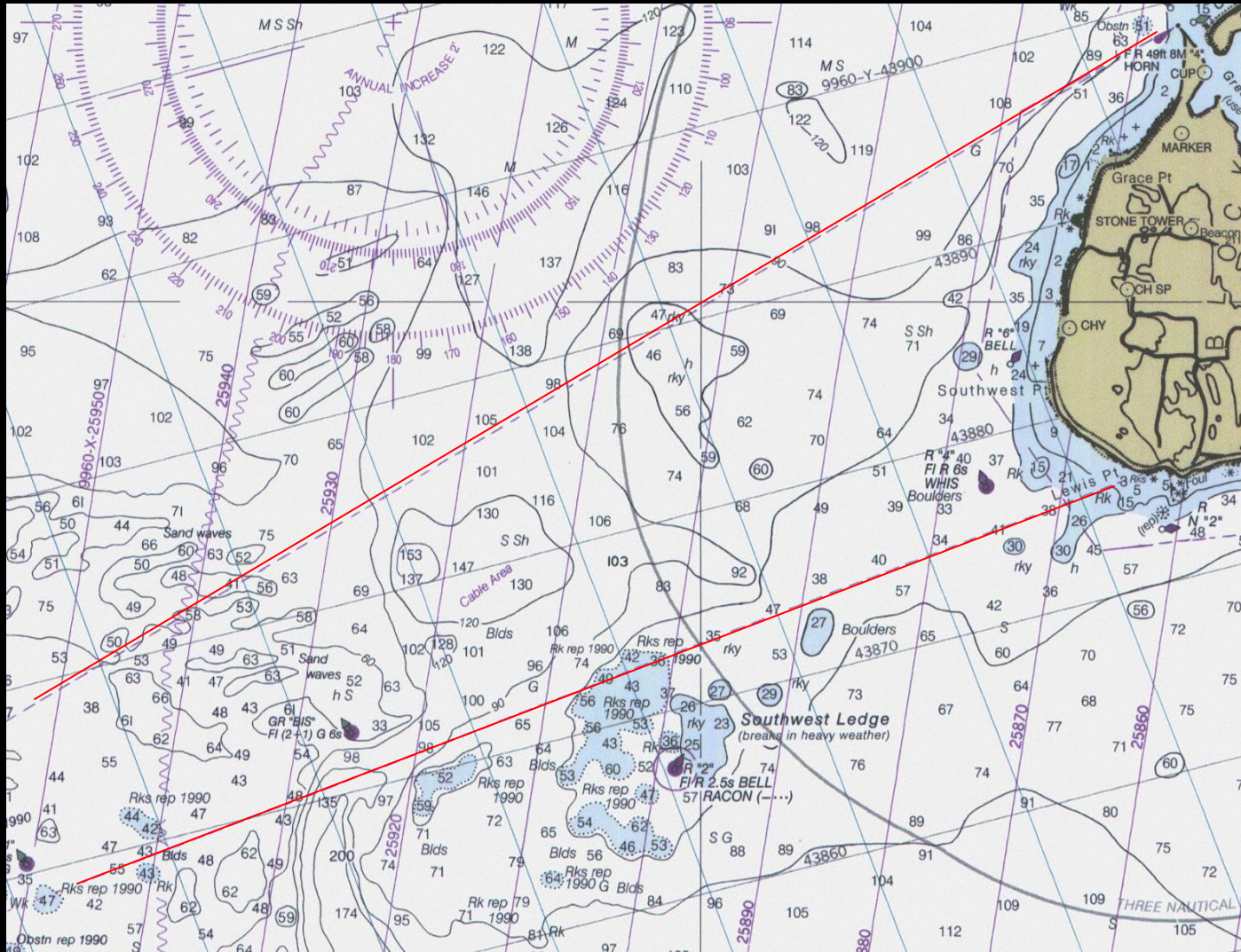
Department of History

URI

Scope of Work To Date

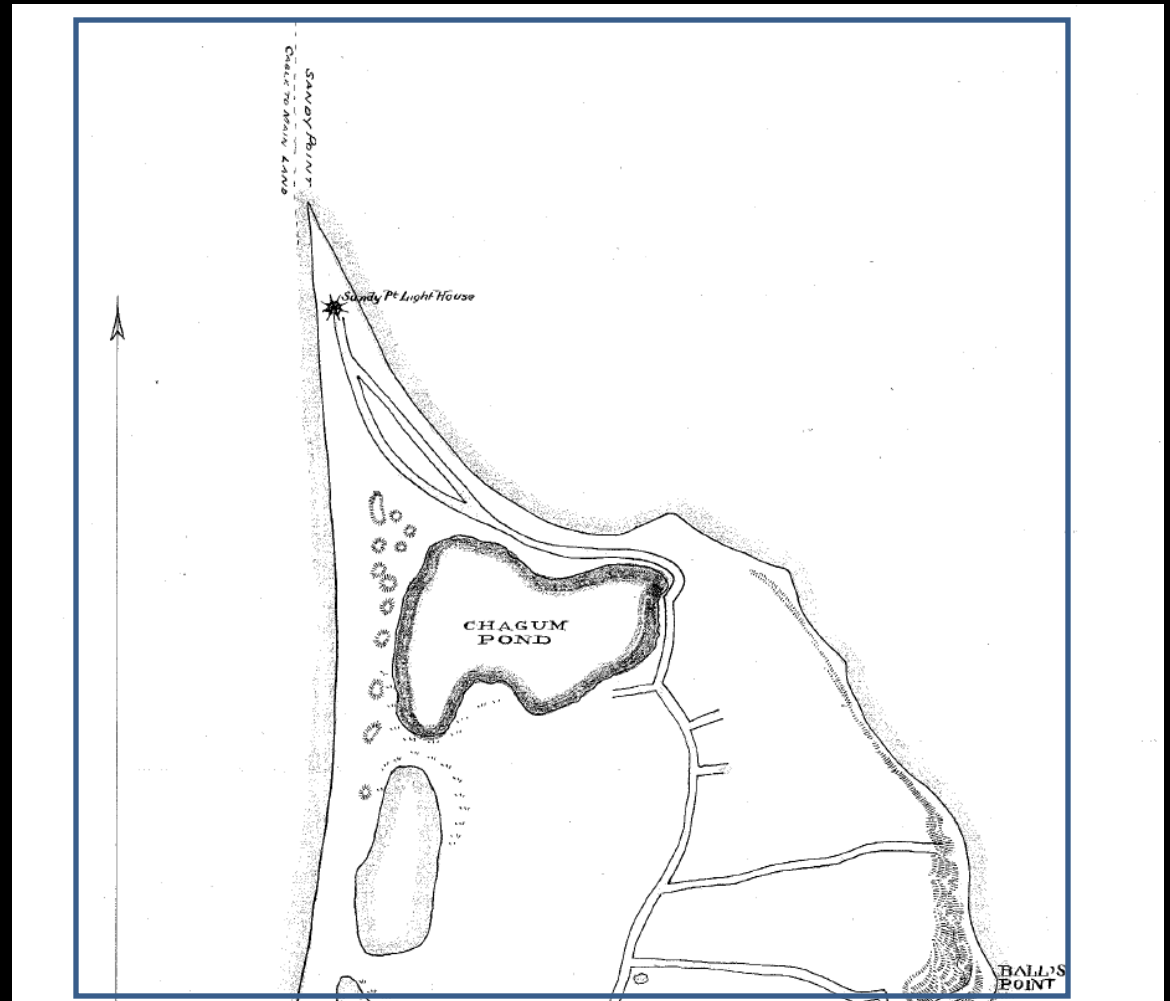
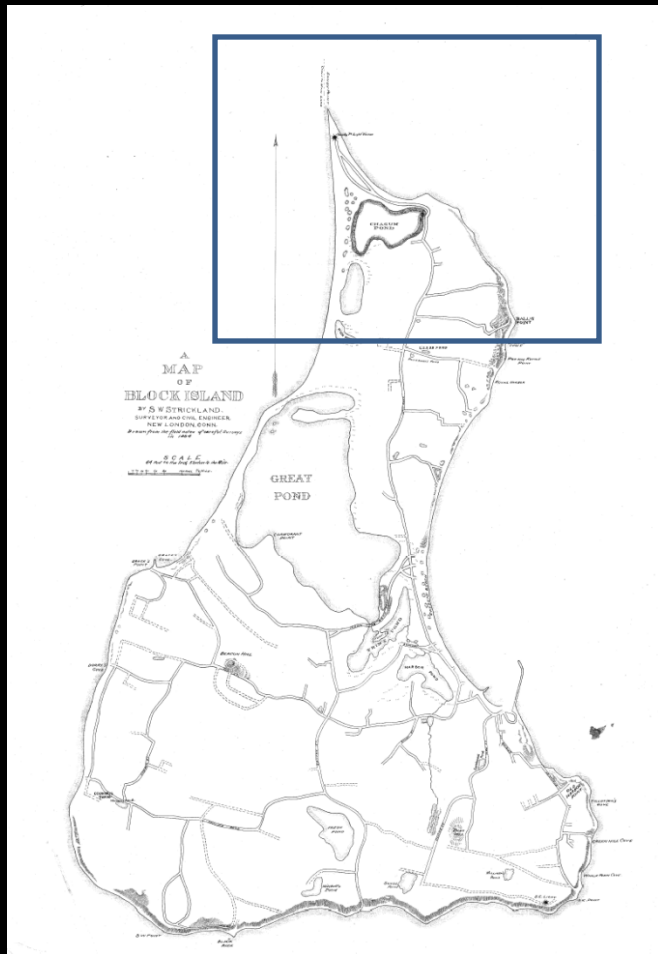
- Focused on Southern Block Island
- Historic Rather than Prehistoric Sites
- Shipwrecks, Buildings, Cables, Marine Structures (wharfs, quays, bridges)
- In Practice – Shipwrecks

Southwest Cable Area



Block Island – 1884

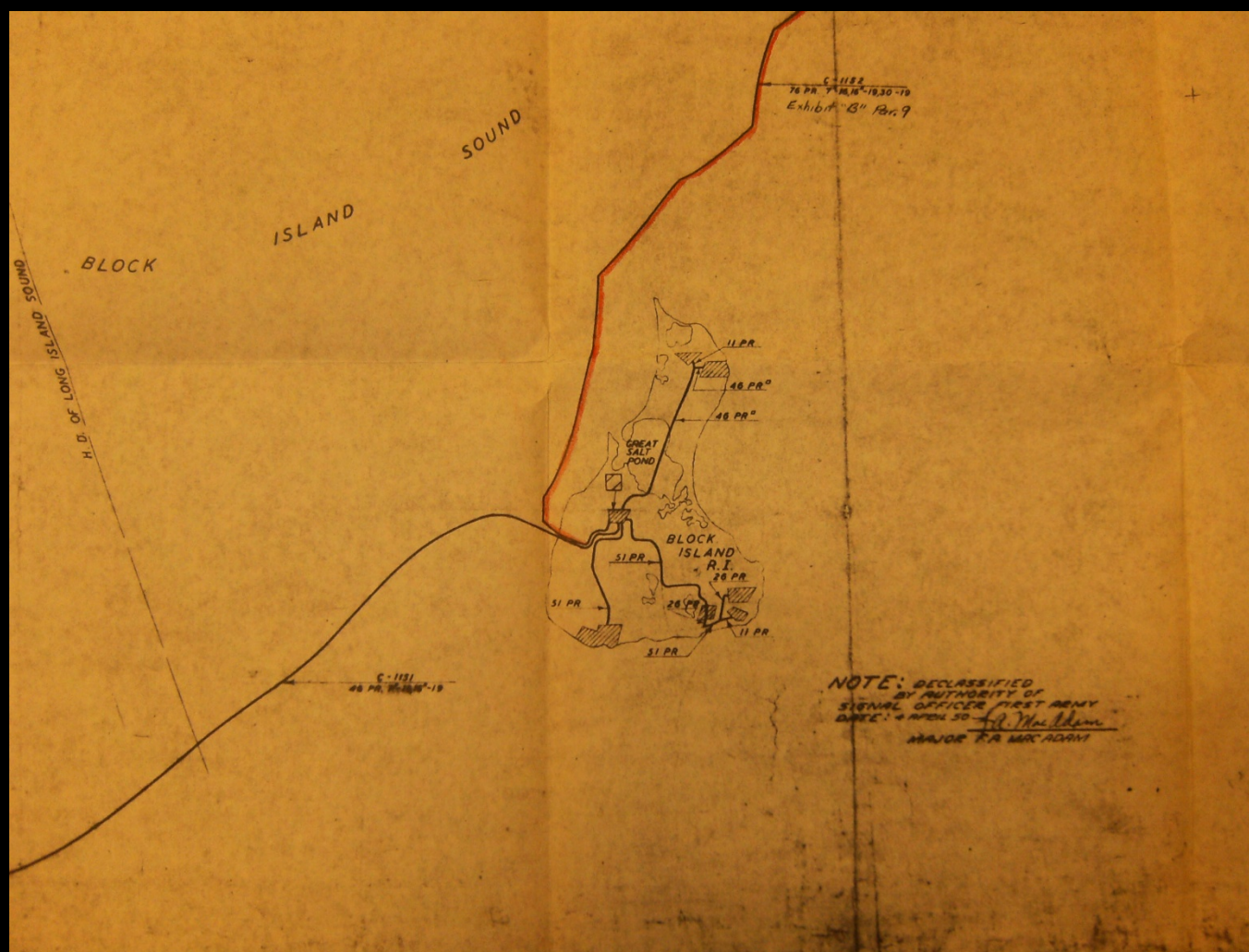
First Submarine Cable



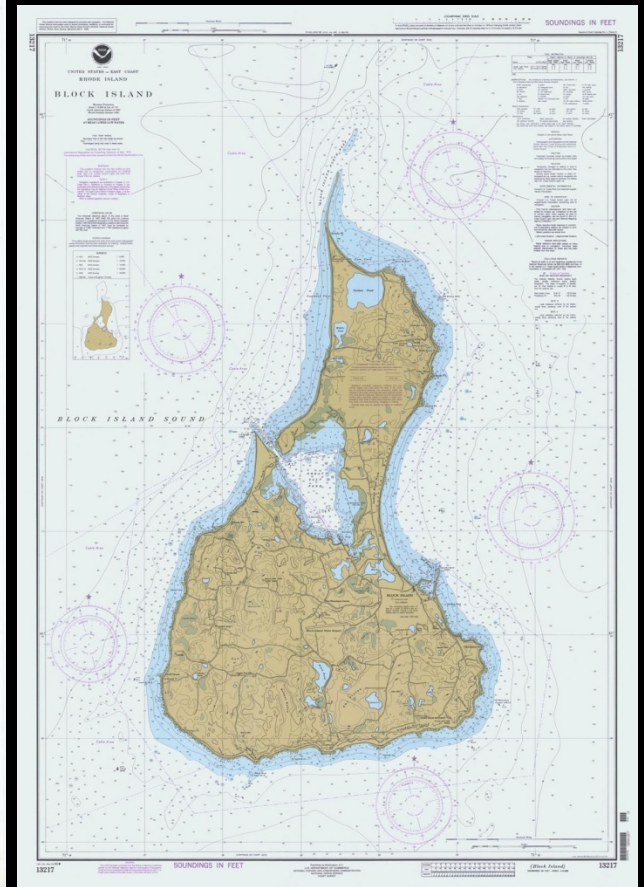
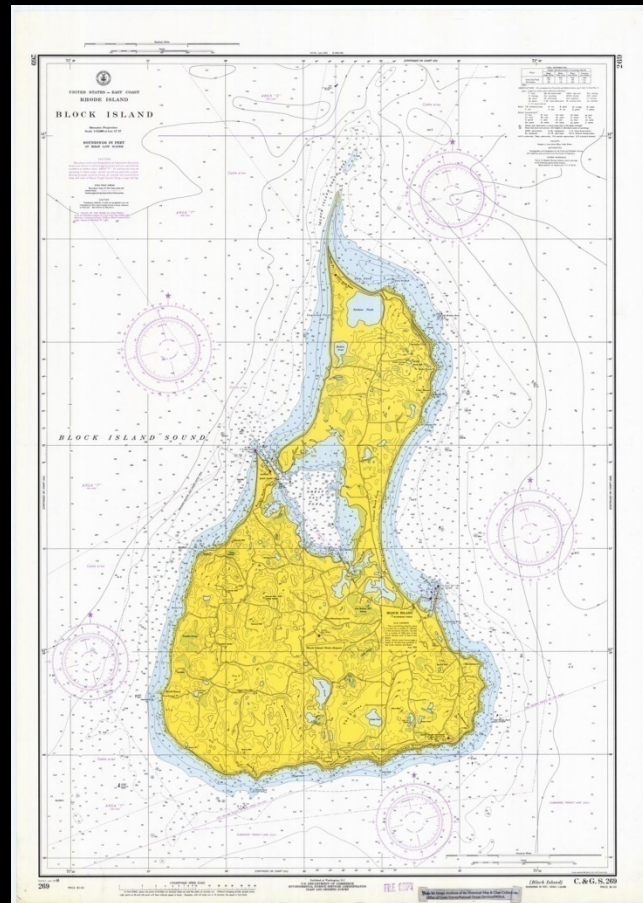
WWII Cable Easements



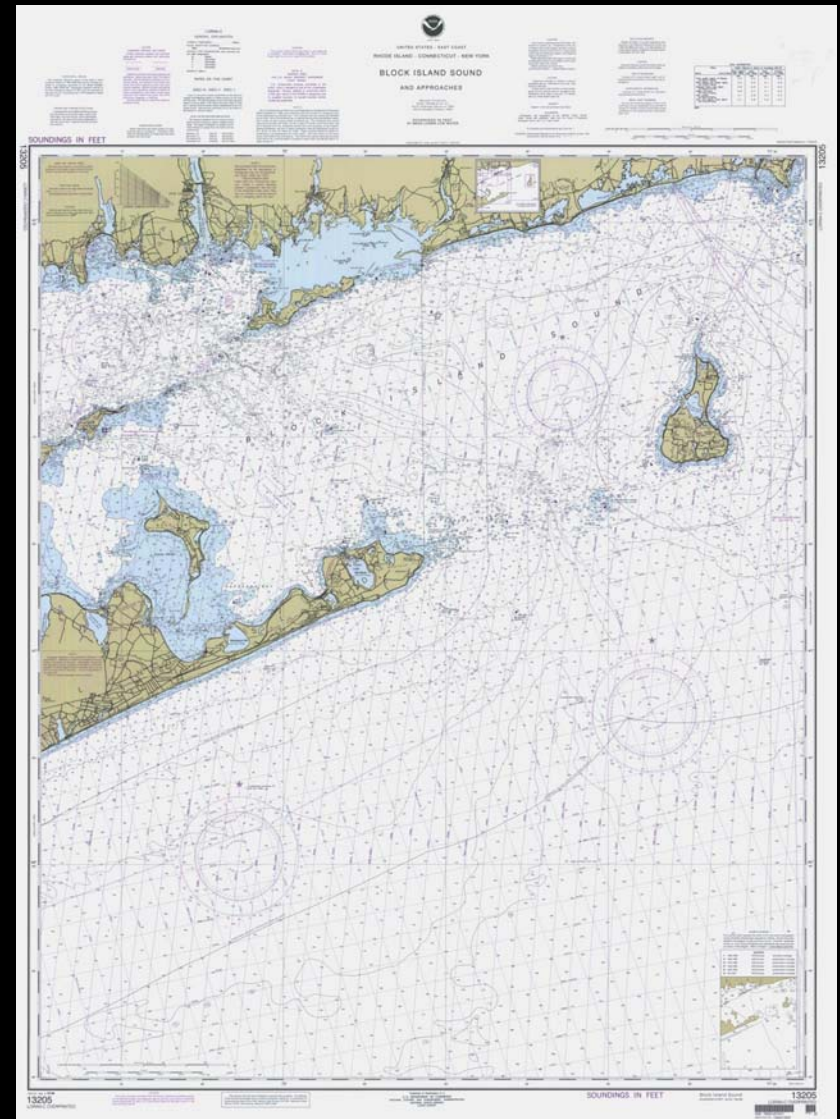
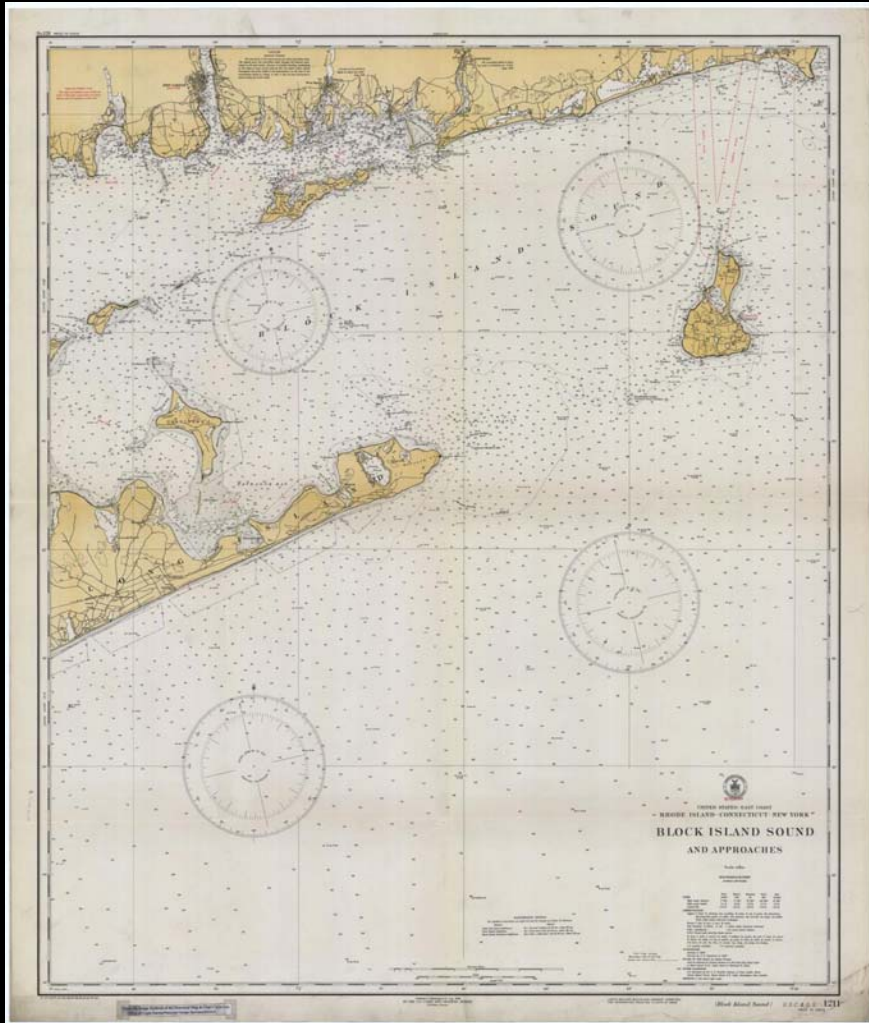
Submarine Cables and De-accession



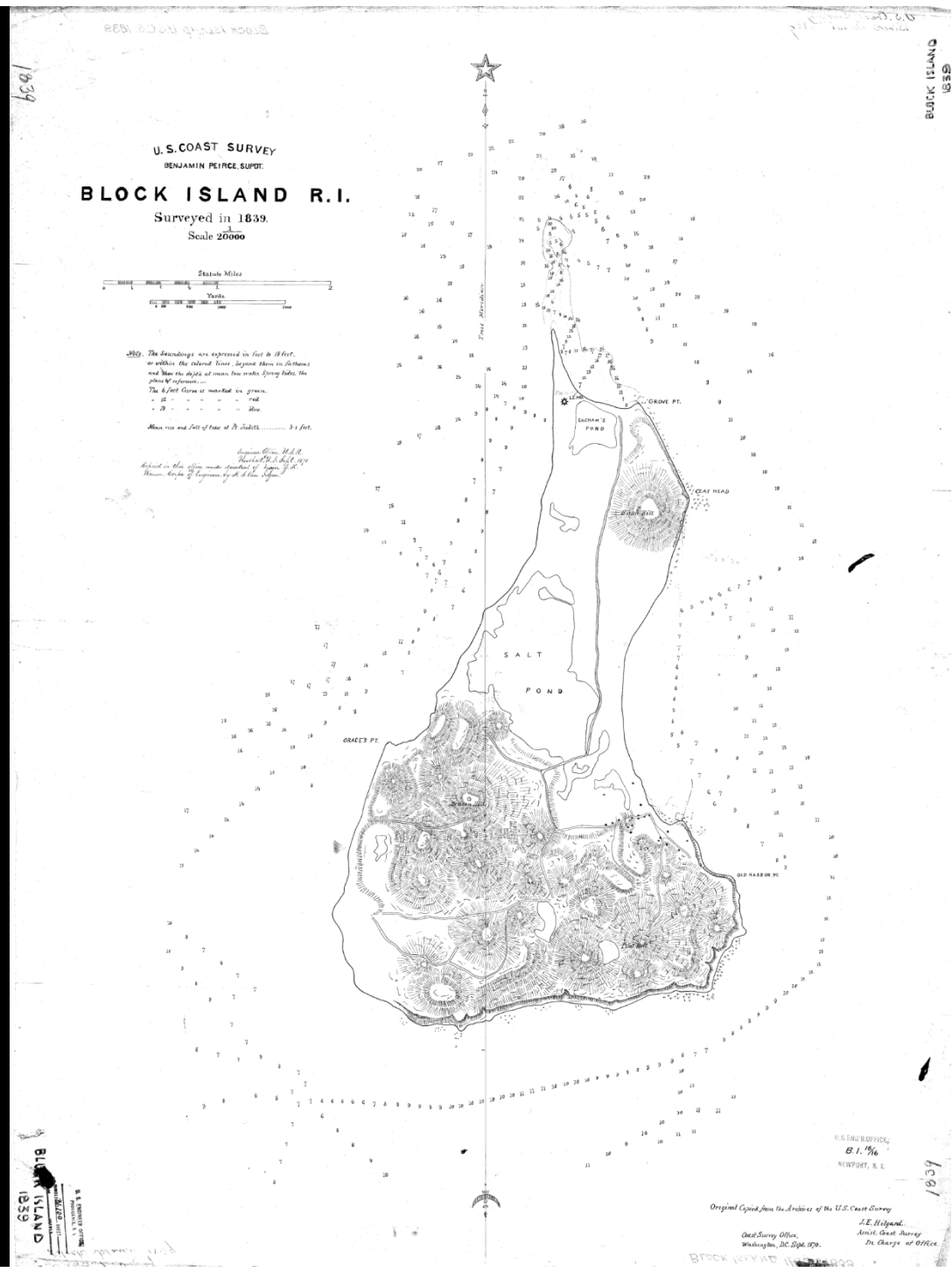
Geo-referenced Historic Nautical Charts – 1914, 1968, 1996



Block Island Sound – 1934 & 1999



Hydrographic Survey - 1839



US Life Saving Station, Wreck Reports, 1900

Form 1864
WRECK REPORT.

Savley's Life-Saving Station, District No. 23

Date of Disaster: *May 23rd, 1901*

1. Name of vessel.	1. <i>Polas Wave</i>
2. Rig and tonnage.	2. <i>Schooner 74 tons</i>
3. Hailing port and nationality.	3. <i>Boston America</i>
4. Age.	4. <i>Twenty Five</i>
5. Official number.	5. <i>150018</i>
6. Name of master.	6. <i>Richard Warren</i>
7. Names of owners.	7. <i>Savley's Parker</i>
8. Where from.	8. <i>Boston</i>
9. Where bound.	9. <i>Block Island fishing</i>
10. Number of crew, including captain.	10. <i>Seventeen</i>
11. Number of passengers.	11. <i>none</i>
12. Nature of cargo.	12. <i>Fish and Salt</i>
13. Estimated value of vessel.	13. <i>2500</i>
14. Estimated value of cargo.	14. <i>15.00</i>
15. Exact spot where wrecked.	15. <i>Clay Head.</i>
16. Direction and distance from station.	16. <i>S.S.E. 2 1/2 miles</i>
17. Supposed cause of wreck (specifying particularly).	17. <i>Thick Fog and Rain</i>
18. Nature of disaster, whether stranded, sunk, collision, etc.	18. <i>Total wreck</i>
19. Distance of vessel from shore at time of accident.	19. <i>250 yds</i>
20. Time of day or night.	20. <i>1.30 P.M.</i>
21. State of wind and weather.	21. <i>S. Brist. Thick</i>
22. State of tide and sea.	22. <i>Ebb. 1/2 down. Smooth</i>
23. Time of discovery of wreck.	23. <i>1.25 A.M.</i>
24. By whom discovered.	24. <i>Charles R. Sprague</i>
25. Time of arrival of station-crew at wreck.	25. <i>3.30 A.M.</i>
26. Time of return of station-crew from wreck.	26. <i>6.30 A.M.</i>
27. Were any of the station-crew absent? If so, who?	27. <i>Charles A. Mitchell</i>
28. Was life-boat used?*	28. <i>no</i>
29. Number of trips with life-boat.	29. <i>none</i>
30. Number of persons brought ashore in life-boat.	30. <i>"</i>
31. Was surf-boat used?*	31. <i>yes</i>
32. Number of trips with surf-boat.	32. <i>yes 3 to Block Island surf boat</i>
33. Number of persons brought ashore with surf-boat.	33. <i>1000</i>
34. Was small boat used?	34. <i>no</i>
35. Number of trips with small boat.	35. <i>none</i>
36. Number of persons brought ashore with small-boat.	36. <i>none</i>

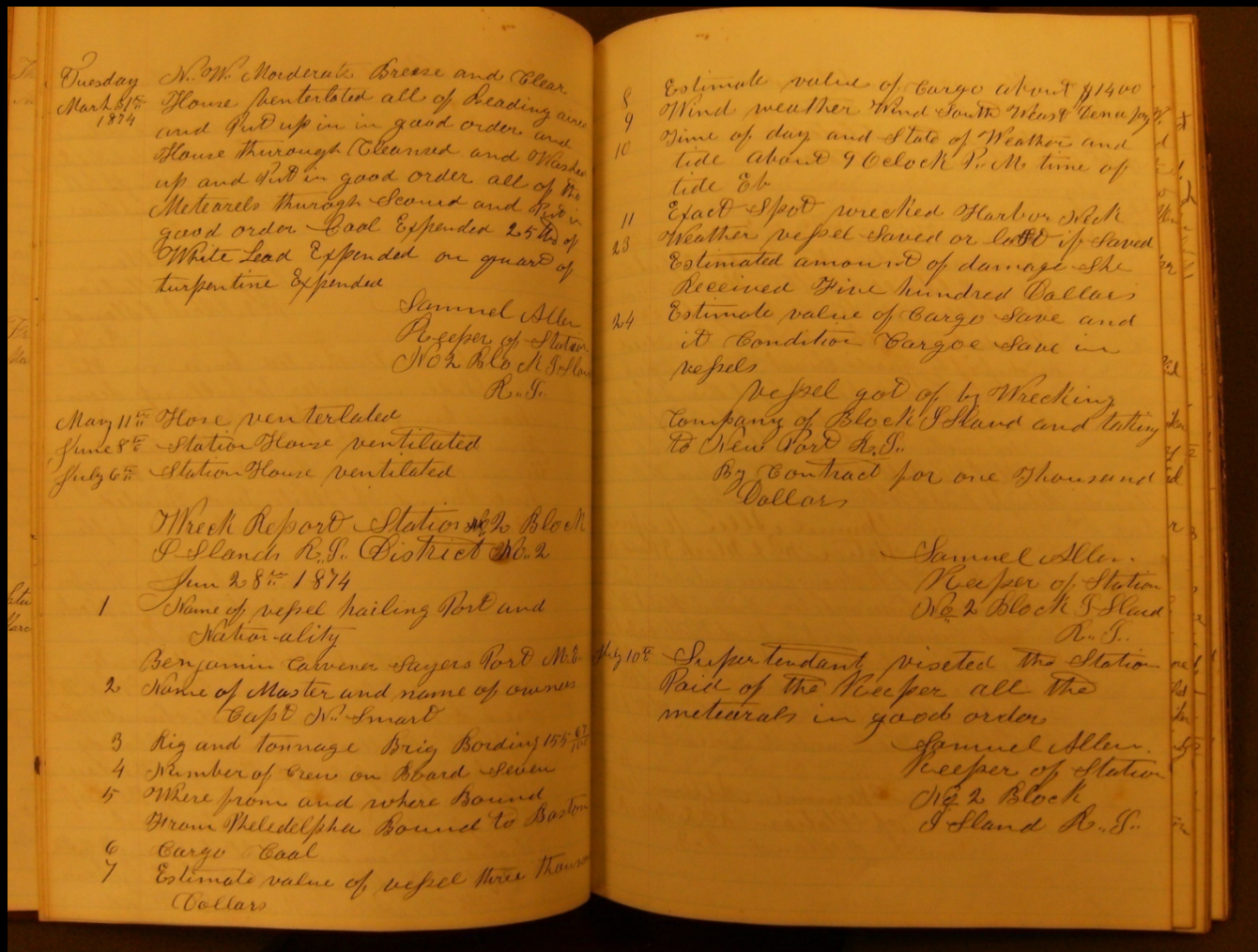
*Specify model or make of boat.

59. Amount of damage, if saved.	59. <i>none</i>
60. Estimated value of cargo saved, and its condition.	60. <i>all cargo saved but sold for 2000</i>
61. Estimated value of cargo lost.	61. <i>about 200000 lost</i>
62. Amount of insurance on vessel.	62. <i>Five thousand five hundred</i>
63. Amount of insurance on cargo.	63. <i>none</i>
64. Number of persons sheltered at station, how long, and total number of meals furnished.	64. <i>none</i>
65. Number and names of persons resuscitated from apparent death by drowning or exposure to cold.	65. <i>"</i>
66. Number of persons found after death and cared for.	66. <i>"</i>
67. Remarks.—All particulars not included in the above list will be here stated giving specially the nature of the assistance rendered by the Life-Saving Service; and if the wreck occurred at a time when the crew was not employed at the station, give the names of those persons who rendered assistance, using additional sheets of paper if necessary.	67. <i>The fishing Schooner Polas Wave stranded during a thick fog and rain on Clay Head at 11.30 A.M. May 23, 1901. She was discovered in about 250 yards by Surfman No. 4 Charles R. Sprague who immediately burned his Castor Signal and returned to the station. An account of regular surf boat being over hauled for the summer the Bebe McCallan self bailing surf boat was used. As account of being shot one man and not having a proper runway for handling such a heavy boat in soft sand it took much hard work and considerable time was spent in floating her. She looked badly in the water but cast tank and had filled by time we had gone the quarters of a mile. However we reached the scene of disaster at 3.30 A.M. In the mean time the vessel had bilged and the crew of 17 all told had left her in various boats. I handed 4 in the surf boat the others pulled away in the direction of the harbor and were cared for at the New Shoreham Station. A dory containing a few articles were brought to the station for safe keeping.</i>

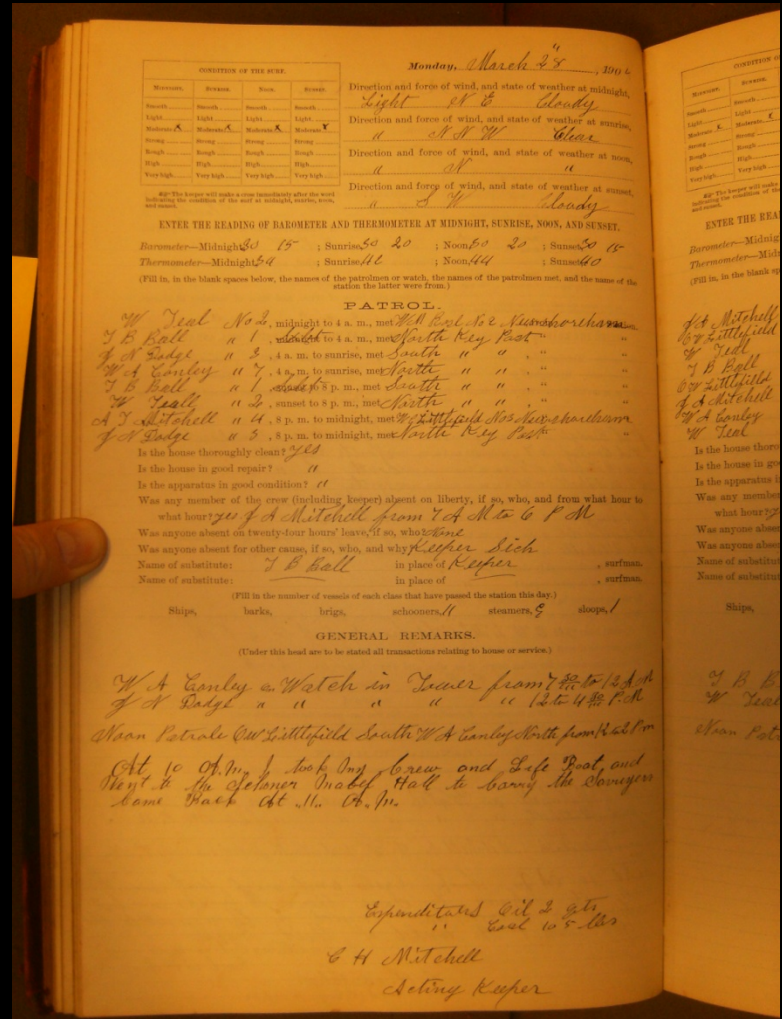
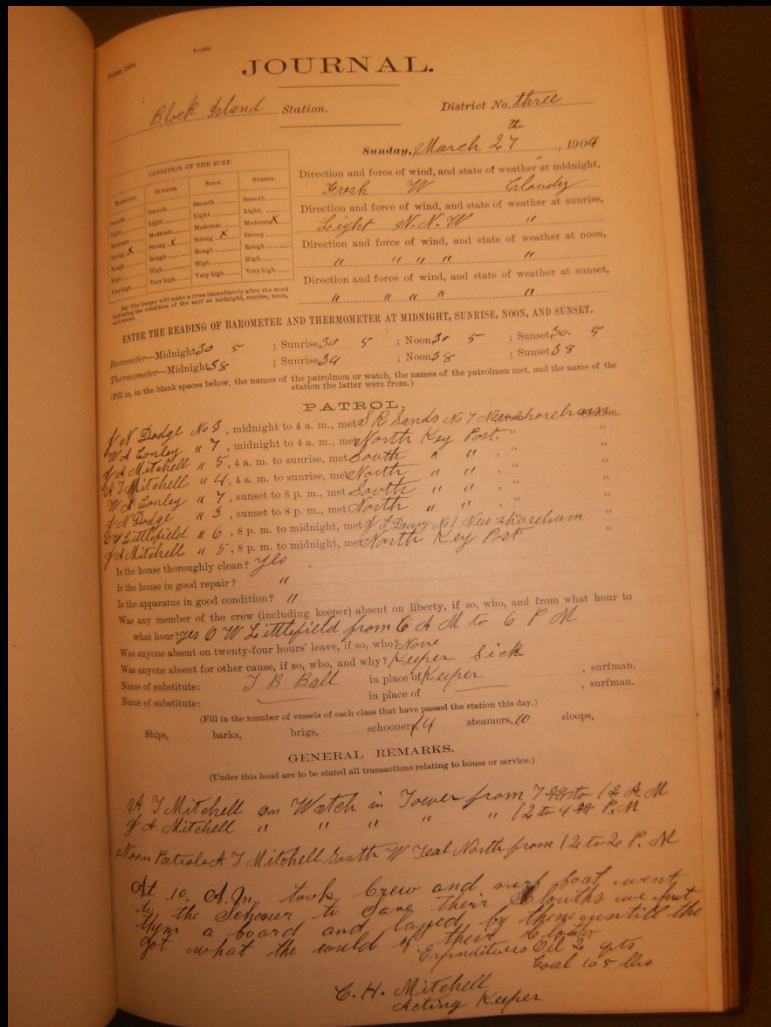
DATE OF REPORT: *June 2nd, 1901* *Edward P. Sisson*
Keeper

NOTE.—Two copies of the above to be filled up, as directed in paragraph 93 of the Revised Regulations, 1894, and sent to the District Superintendent, who will forward one to the office of the General Superintendent. Copy to be entered upon the Journal.

US Life Saving Station Wreck Reports, 1874



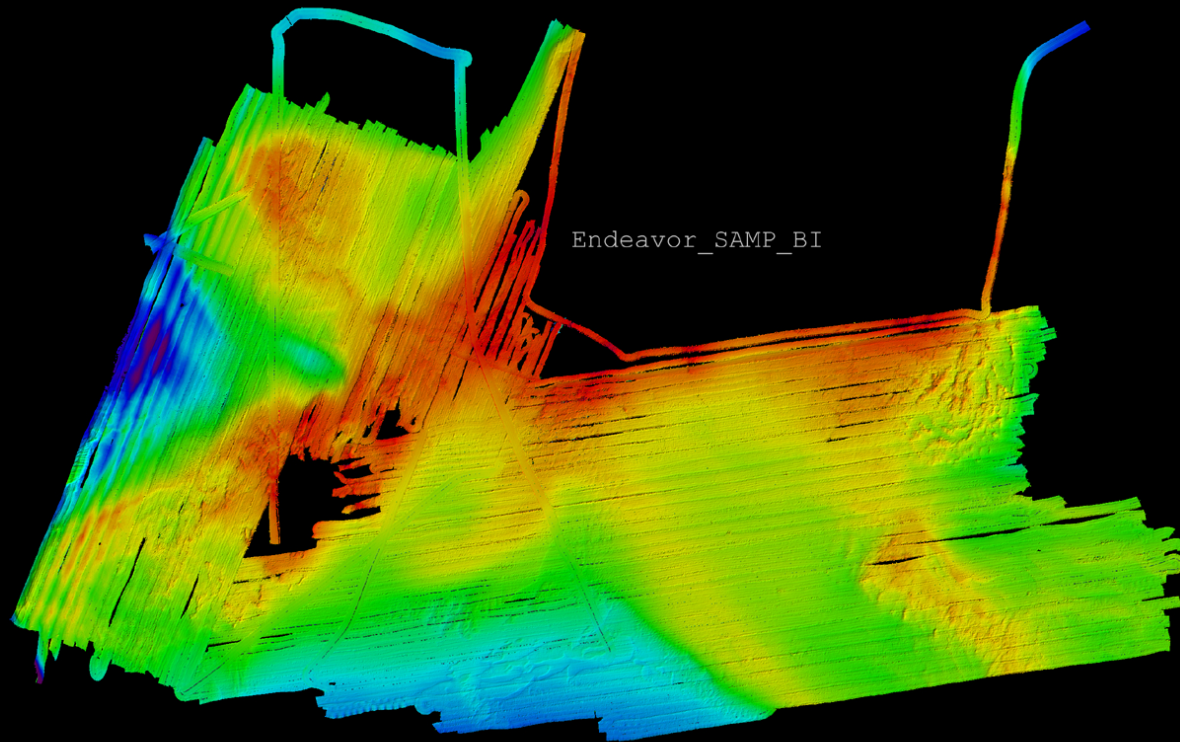
US Life Saving Station Journals



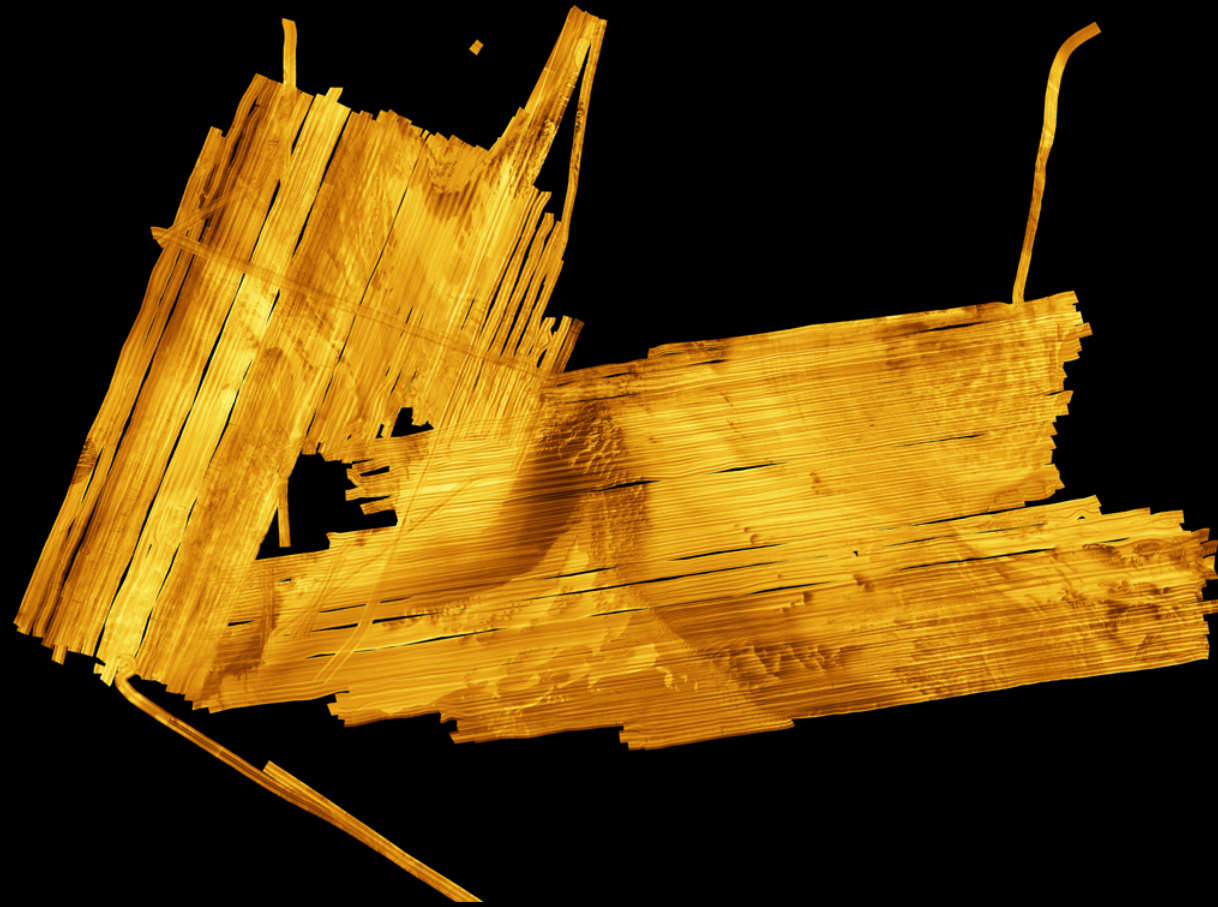
Database of Known and Probable Vessel Losses Near Block Island

- Official State Database
- URI Database (historic research, snag numbers, recreational diver numbers, AWOIS, SAMP geophysical survey)

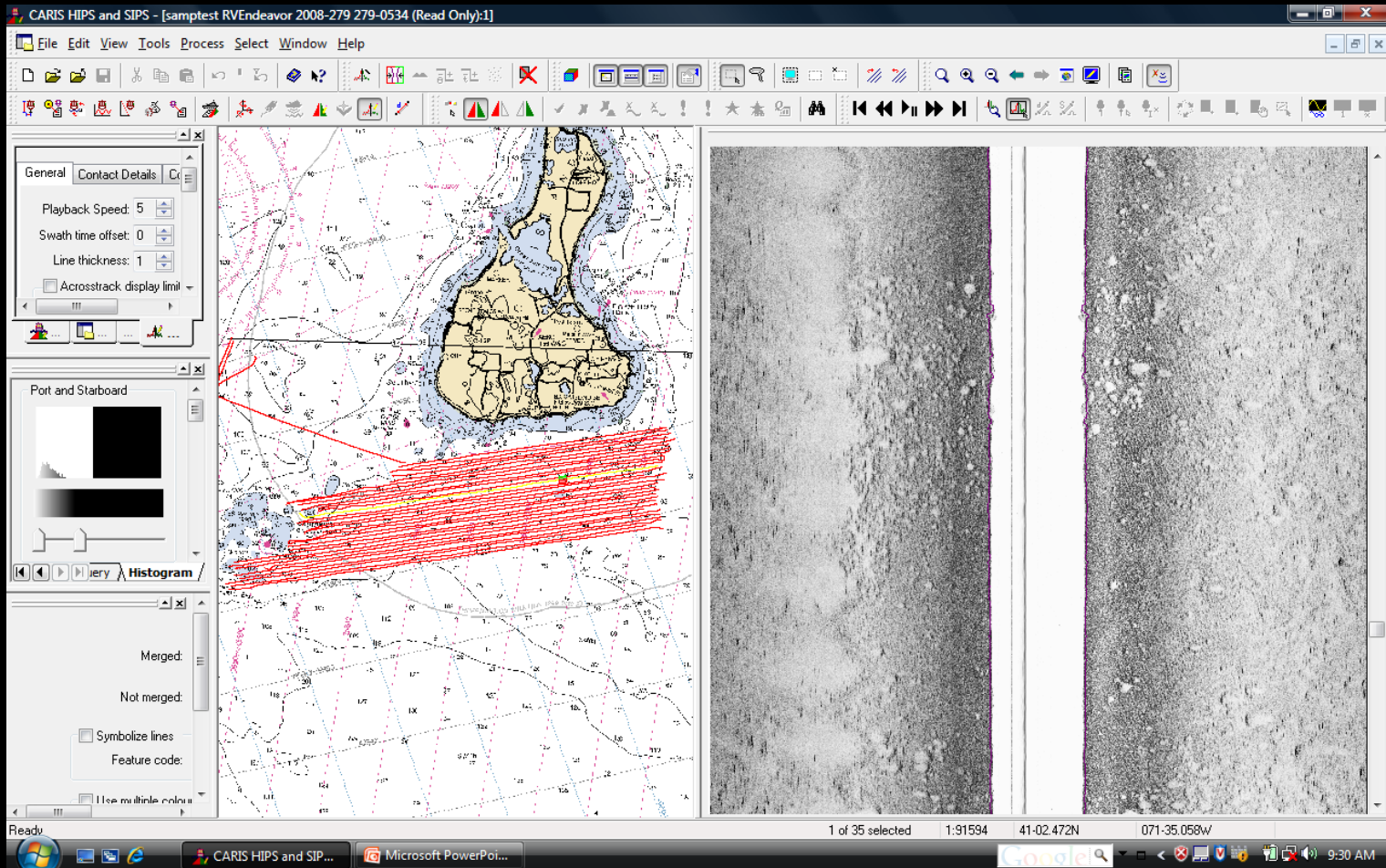
Multibeam Data for State Waters South of Block Island – *Endeavor* Cruise 2008



Side Scan Mosaic – *Endeavor* Cruise 2008



Post-Processing Side Scan Data and Target Identification



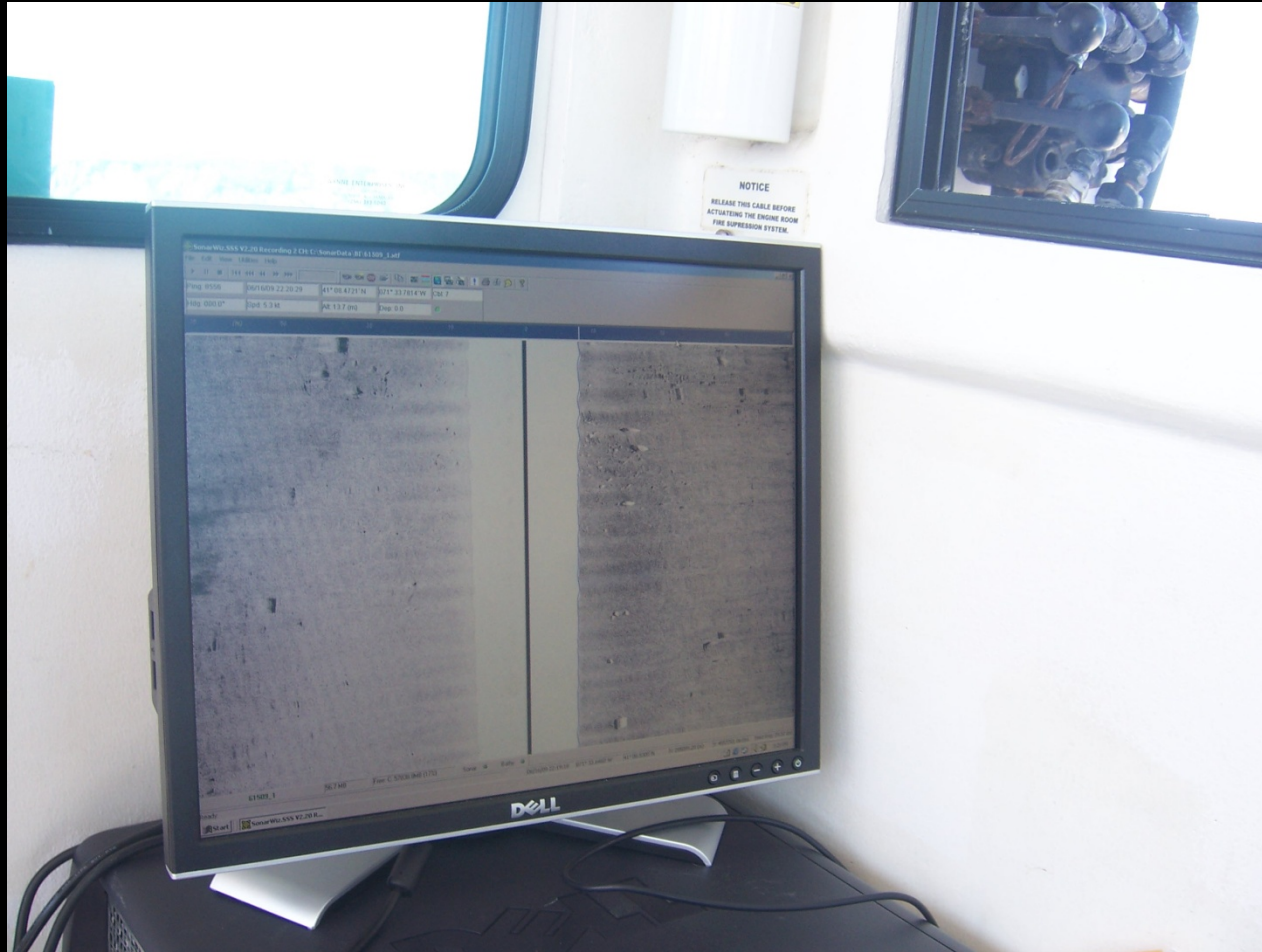
Target Classification

- 1 – Certain (0)
- 2 – Probable (0)
- 3 – Possible (5)
- 4 – Unlikely (24)
- 5 – Conceivable (56)

Groundtruthing and Site Specific Studies (June 2009, August 2009)



Acoustic Reacquisition



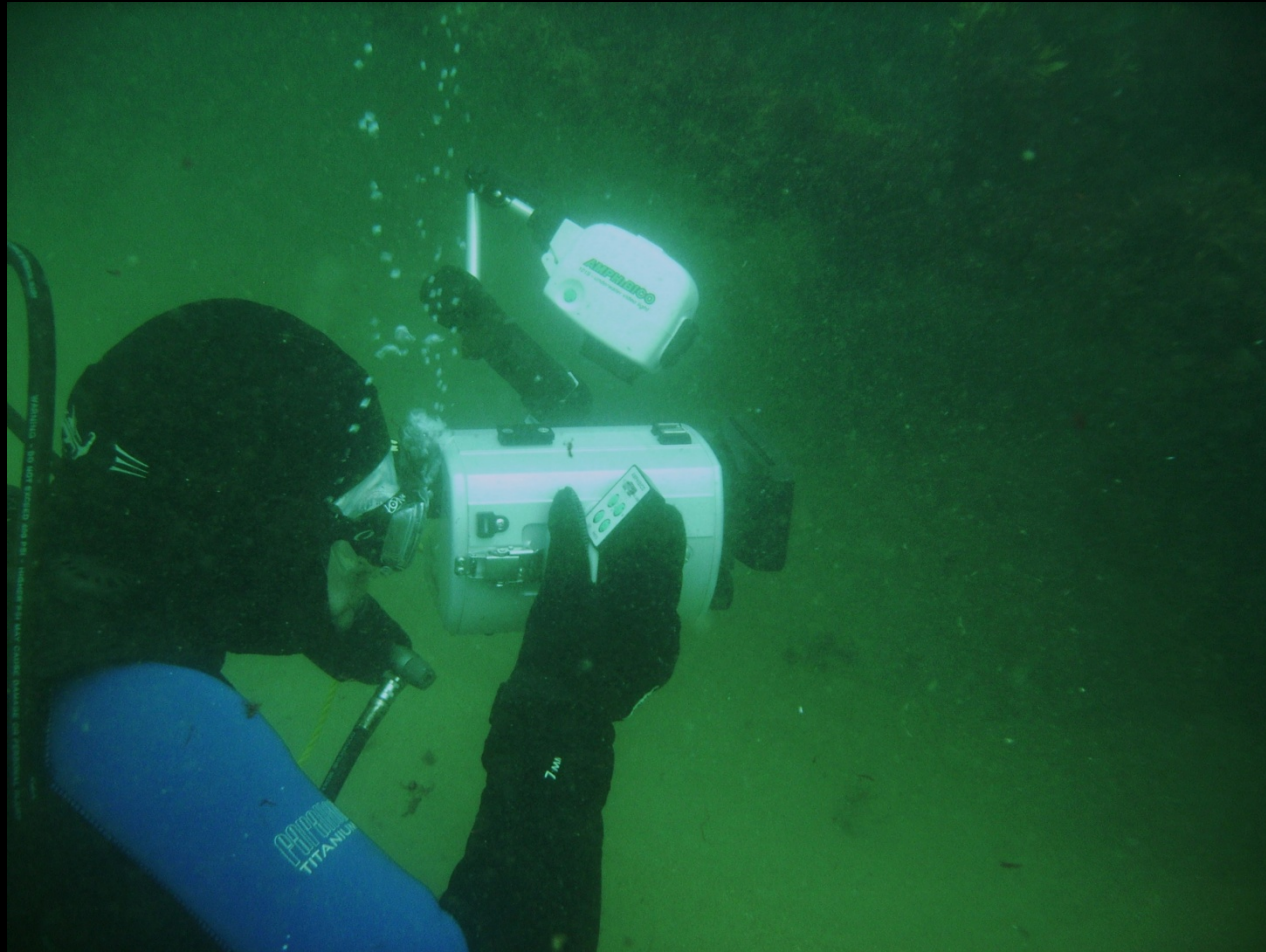
Groundtruthing and Site Assessment



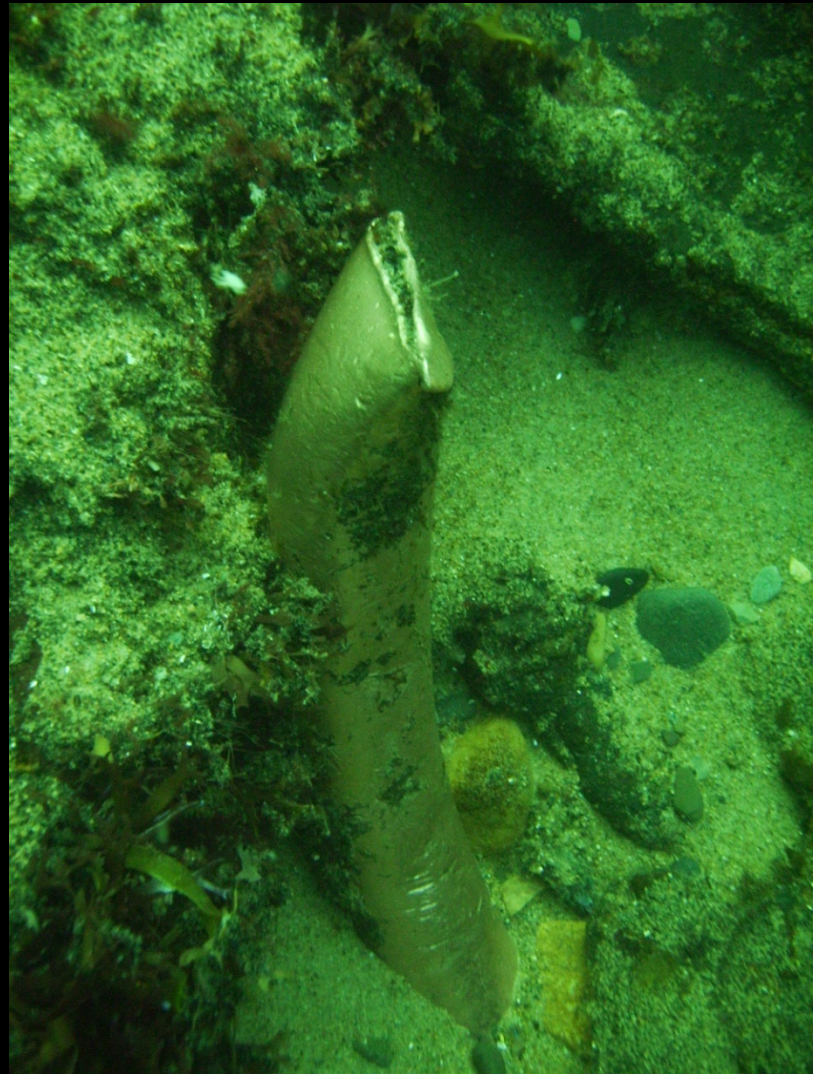
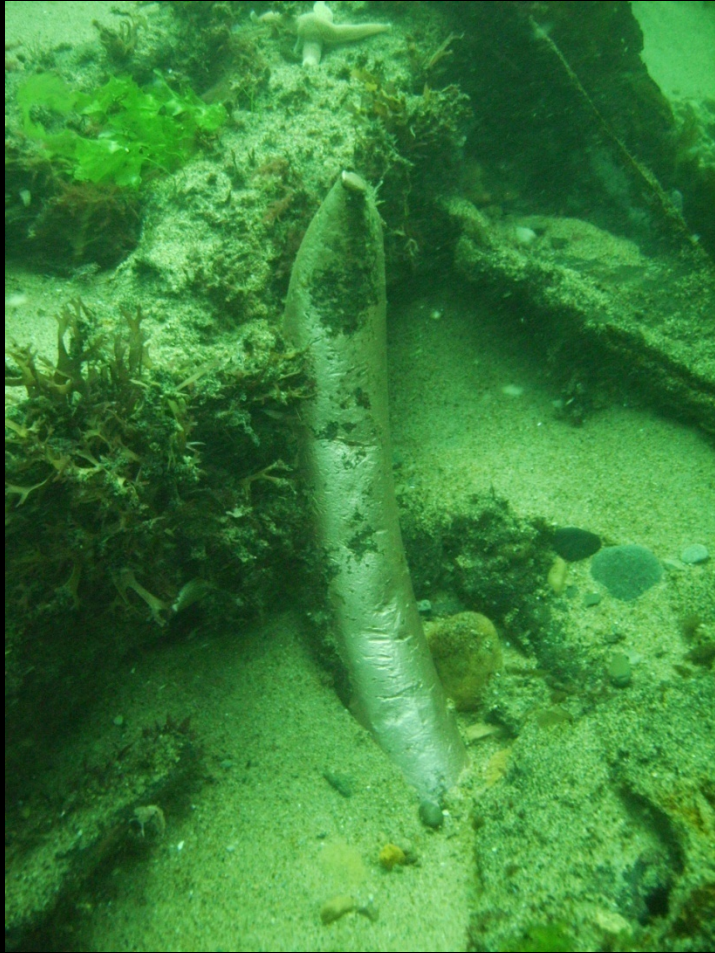
Lightburne, 1939



Photographic and Video Documentation



Evidence of Damage and Looting



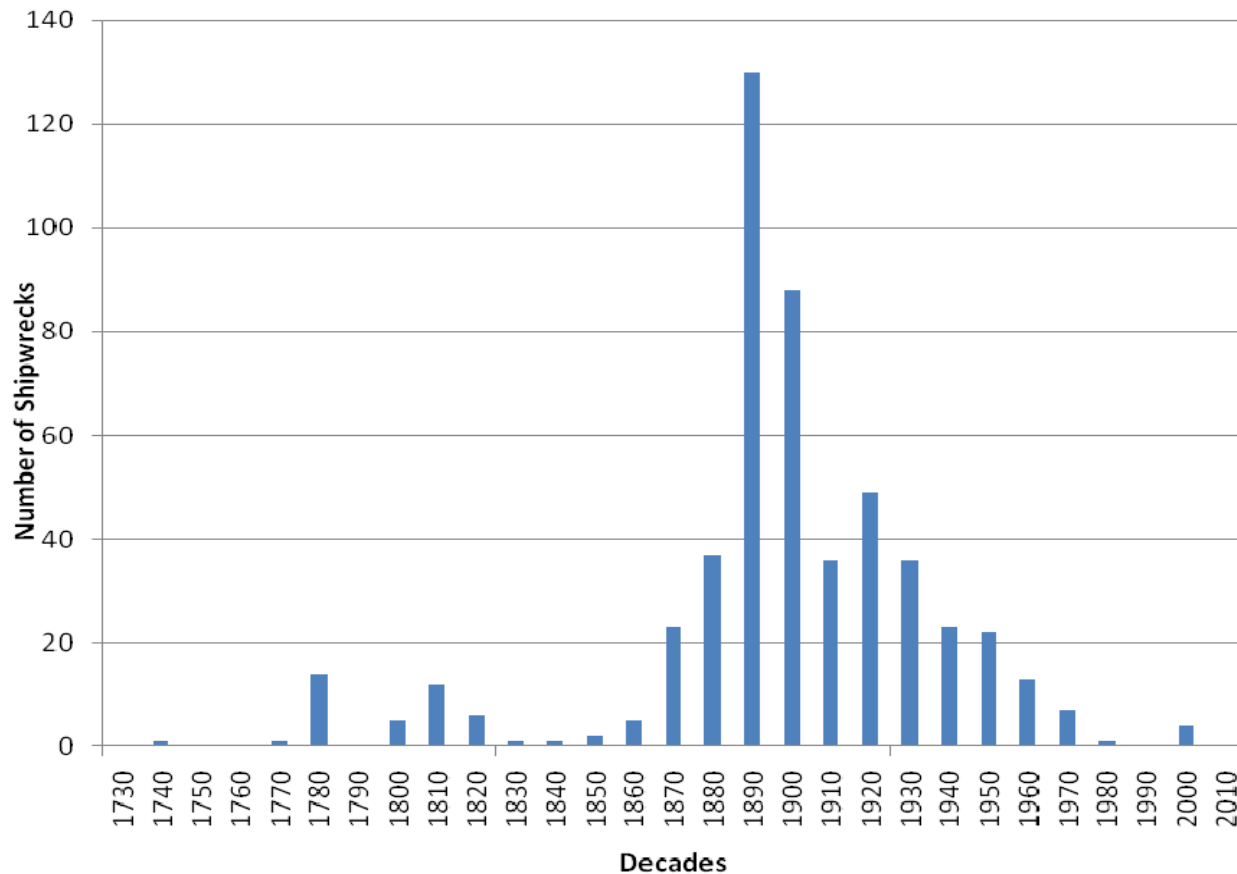
Shoreline Survey



Preliminary Shipwreck Distributions for Block and Rhode Island Sounds

Preliminary Shipwreck Temporal Distribution

Rhode Island Shipwrecks by Decade (n=517)



Pre-Contact Archaeological Sites

- Certainly exist in Rhode Island waters
- Cutting edge of underwater archaeology
- Requires paleo-archaeological landscape reconstruction
- Requires sub-bottom data and cores
- Requires high resolution survey
- Requires tribal input
- Site testing
- Not practical within Ocean SAMP structure – should be addressed in the EIS