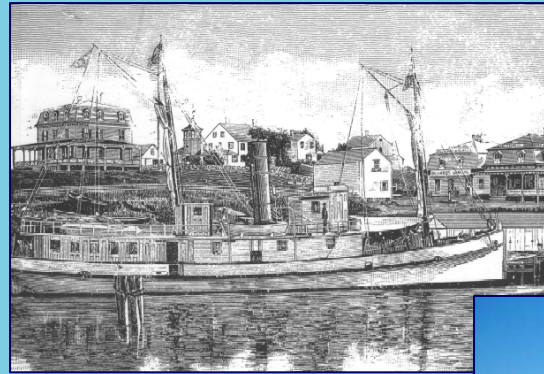


# RI Ocean Special Area Management Plan

## Overview of the Ocean SAMP *Cultural and Historic Resources* Chapter



Ocean SAMP Stakeholder Meeting  
June 1, 2010

# Chapter Contributors

- Dr. Roderick Mather, University of Rhode Island
- Dr. John Jensen, University of Rhode Island
- Dr. John King, University of Rhode Island
- Dr. Jon Boothroyd, University of Rhode Island
- Dr. Richard Greenwood, RIHPHC (SHPO)
- Charlotte Taylor, RIHPHC (SHPO)
- Dr. Ella Sekatau, Ethnohistorian, Narragansett Indian Tribe  
Historic Preservation Office (NITHPO)
- Chip Young, Coastal Institute, University of Rhode Island
- Teresa Crean, Chapter Coordinator, University of  
Rhode Island Coastal Resources Center / RI Sea Grant

# Cultural & Historic Resources Chapter Technical Advisory Committee (TAC)

- Block Island Historical Society
- South County Museum Organization
- Westerly Historical Society
- Newport Historical Society
- Narragansett (Pettasquamscutt) Museum
- Charlestown Historical Society
- Little Compton Historical Society

# State and Federal Agencies

## Federal:

- US Minerals Management Service
- US Army Corps of Engineers
- Narragansett Indian Tribe
- US National Oceanographic and Atmospheric Administration
- US Environmental Protection Agency
- US Fish and Wildlife Service
- US Coast Guard
- US Navy

## State:

- RI Department of Environmental Management
- RI Economic Development Corporation
- RI Statewide Planning
- RI Historic Preservation and Heritage Commission  
(State Historic Preservation Office)

# Chapter Overview

- **Historic Contexts and Cultural Landscapes**
  - Pre-Contact Geological History
  - Narragansett Tribal History
  - Landscape Contexts
    - European Exploration & Colonial Settlement
    - Post-Colonial Cultural Landscape
    - Military Landscape
    - Fisheries Landscape
    - Marine Transportation Landscape
    - Recreation and Tourism Landscape
    - Energy Landscape

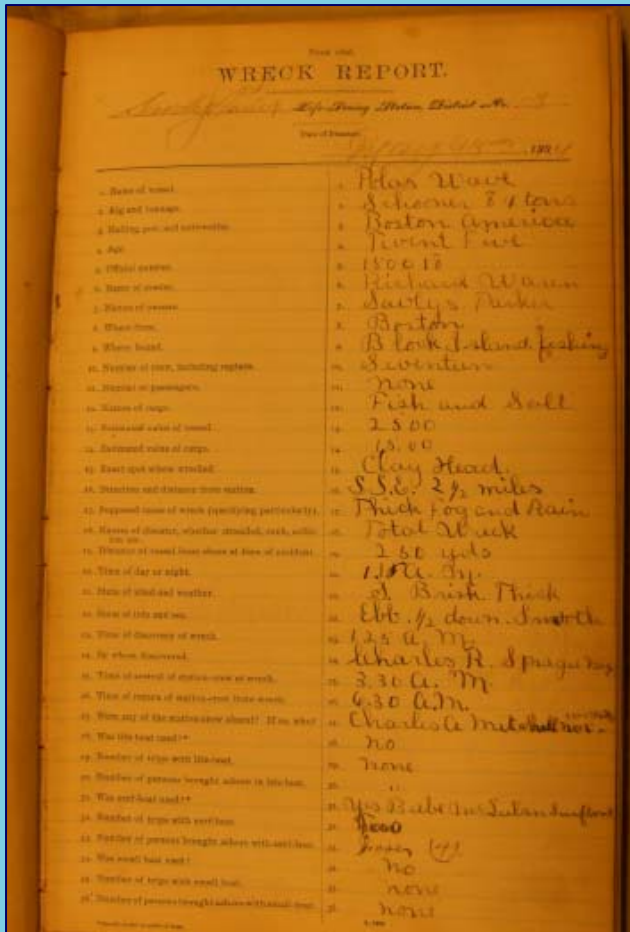
# Chapter Overview

- **Submerged Archaeological Sites**
  - Potential & Known Sites
  - Spatial & Temporal Distribution Patterns
  - Cable Areas
  - Paleo-Geographic Landscape Reconstruction
- **Onshore Historic Sites Adjacent to the SAMP Area**
  - Properties Listed on National Register
  - Candidate Properties in the SAMP Area
  - Block Island Properties Eligible for the National Register

# Major Findings

- Rhode Island has rich and historically significant history of human activity within and adjacent to the Ocean SAMP area.
- There are numerous sites & properties both underwater and onshore with cultural and historic significance in the Ocean SAMP area.
- Both submerged and land-based cultural & historic properties should be considered when evaluating future projects.

# Methodology

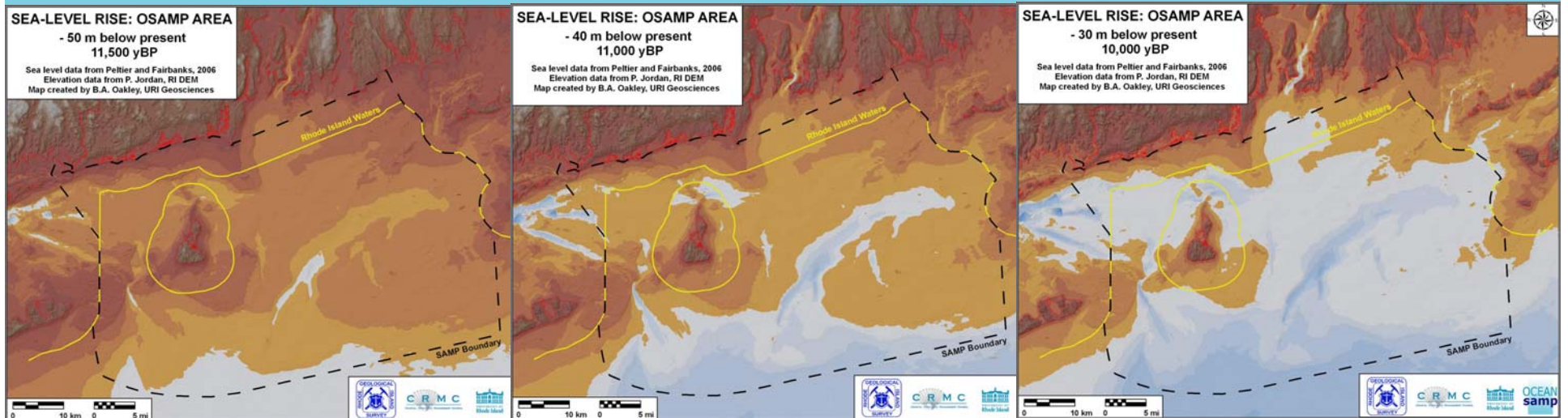


- Review of key documents
- Literature and data search
- Identification of submerged & land-based sites with cultural and historical significance

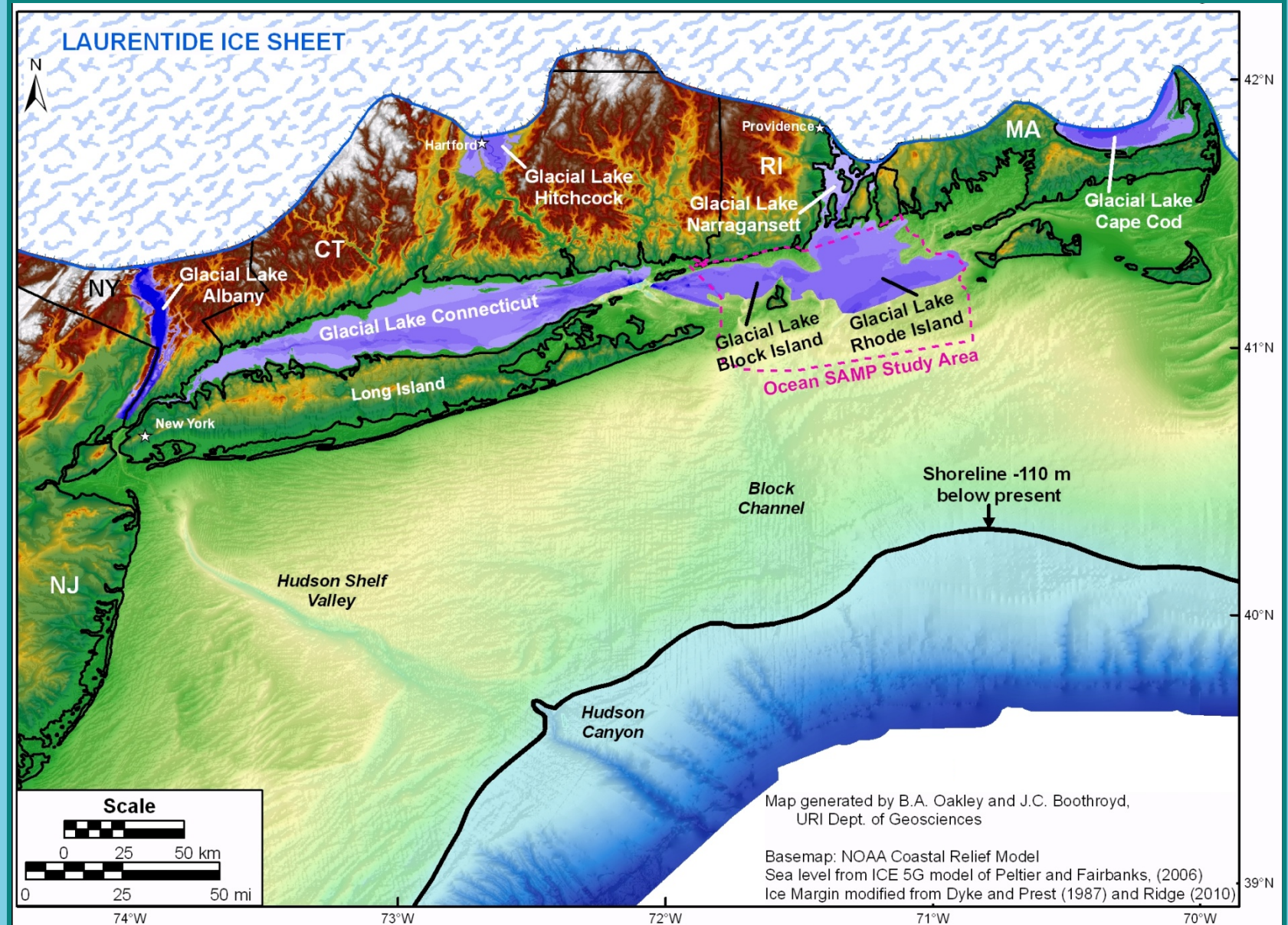


# Pre-Contact Geological History

- Paleo-Geographic Landscape Reconstruction
- Sea Level Rise & inundation of offshore landscapes between 11,500 yBP-10,000 yBP

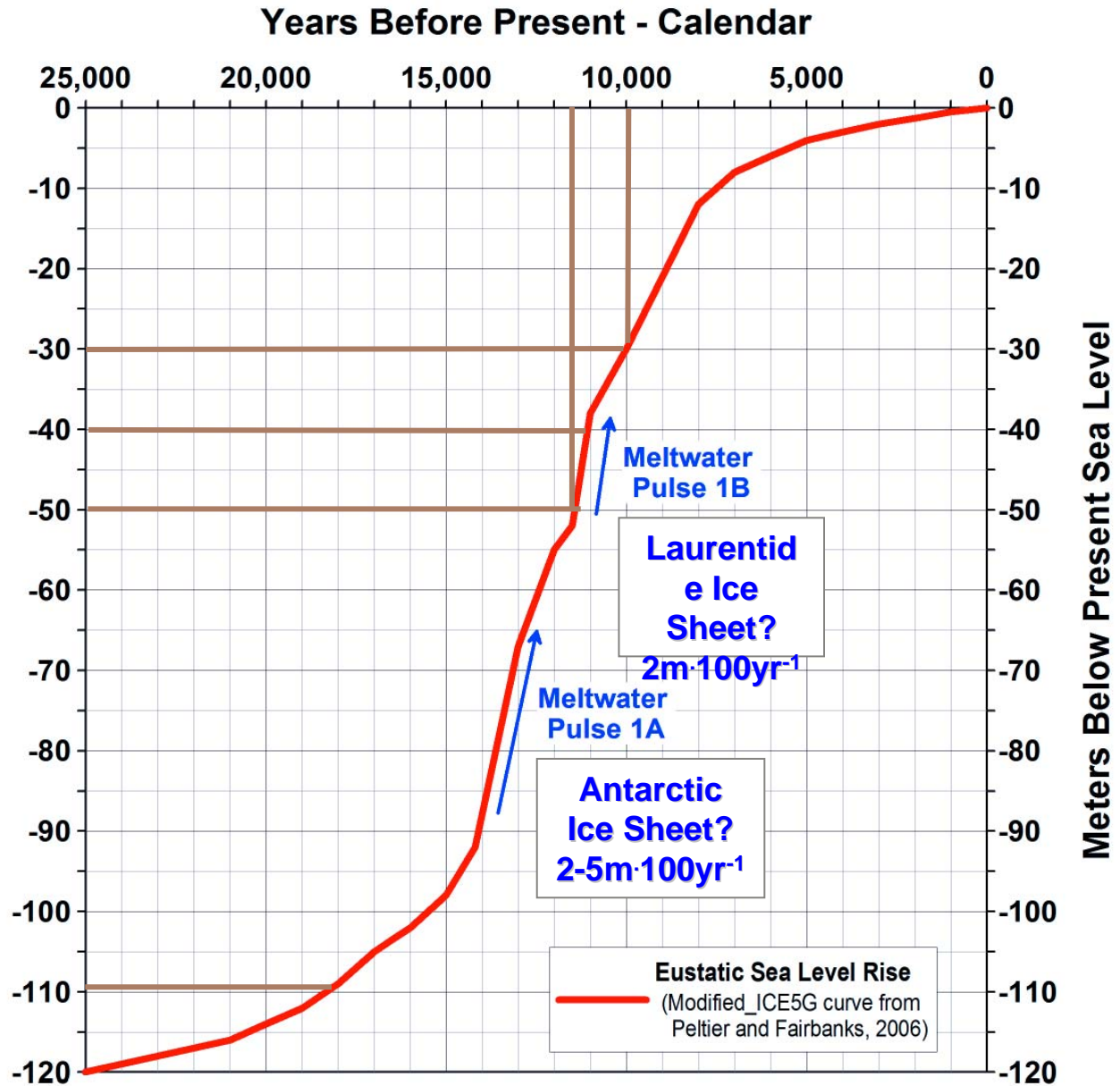


# Paleogeographic Map 18,000 yBP





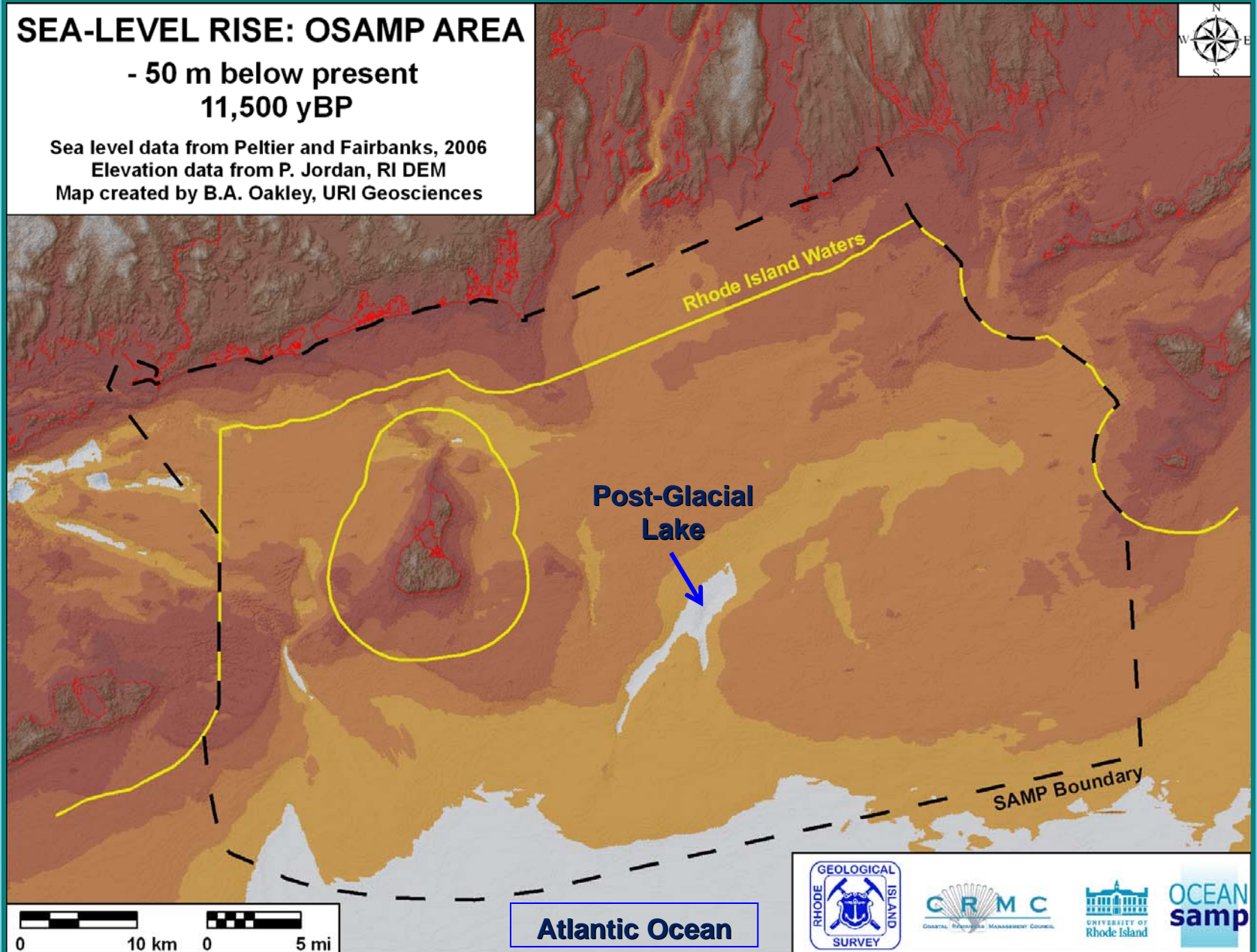
# Eustatic Sea-Level Rise



# SEA-LEVEL RISE: OSAMP AREA

- 50 m below present  
11,500 yBP

Sea level data from Peltier and Fairbanks, 2006  
Elevation data from P. Jordan, RI DEM  
Map created by B.A. Oakley, URI Geosciences

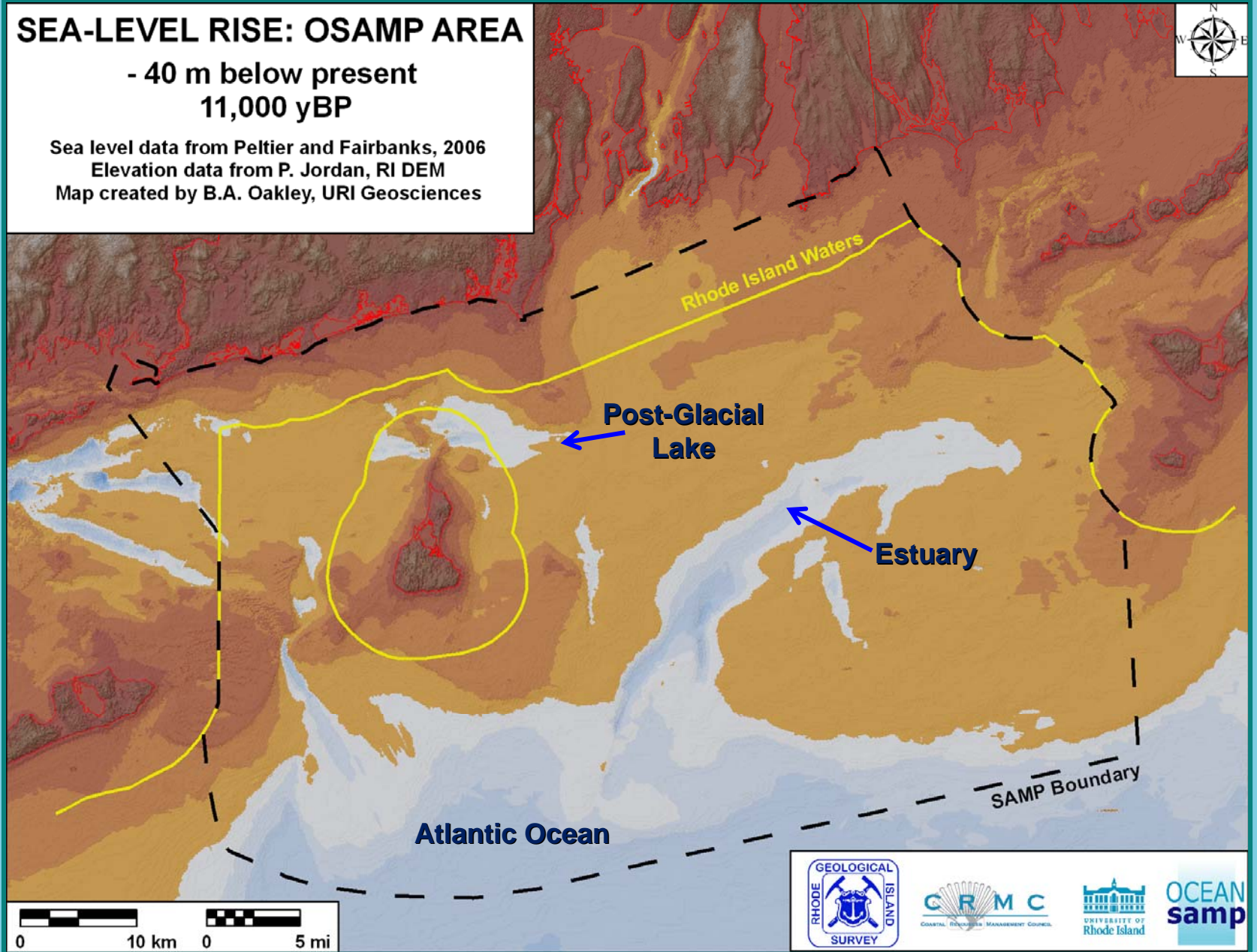




# SEA-LEVEL RISE: OSAMP AREA

- 40 m below present  
11,000 yBP

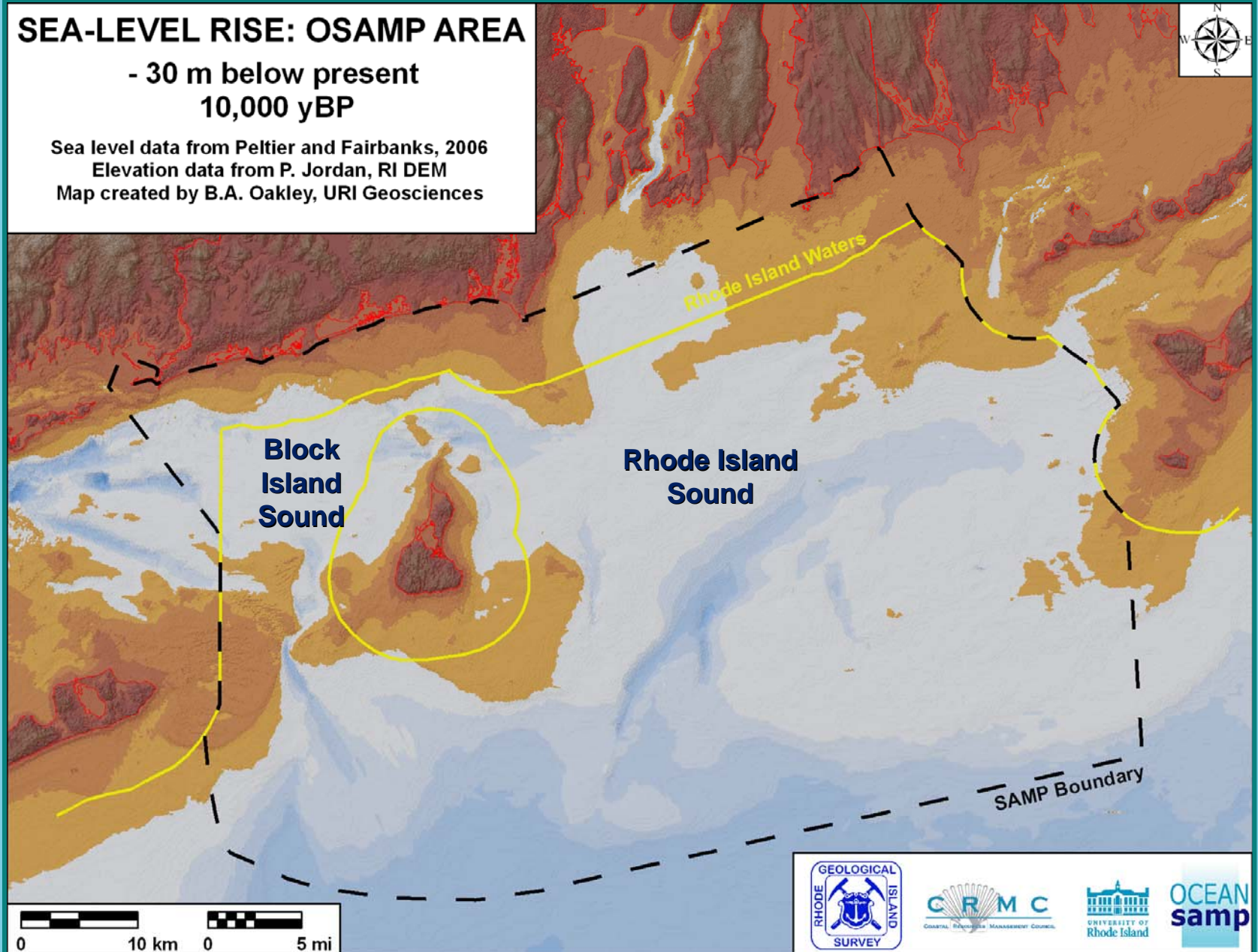
Sea level data from Peltier and Fairbanks, 2006  
Elevation data from P. Jordan, RI DEM  
Map created by B.A. Oakley, URI Geosciences



# SEA-LEVEL RISE: OSAMP AREA

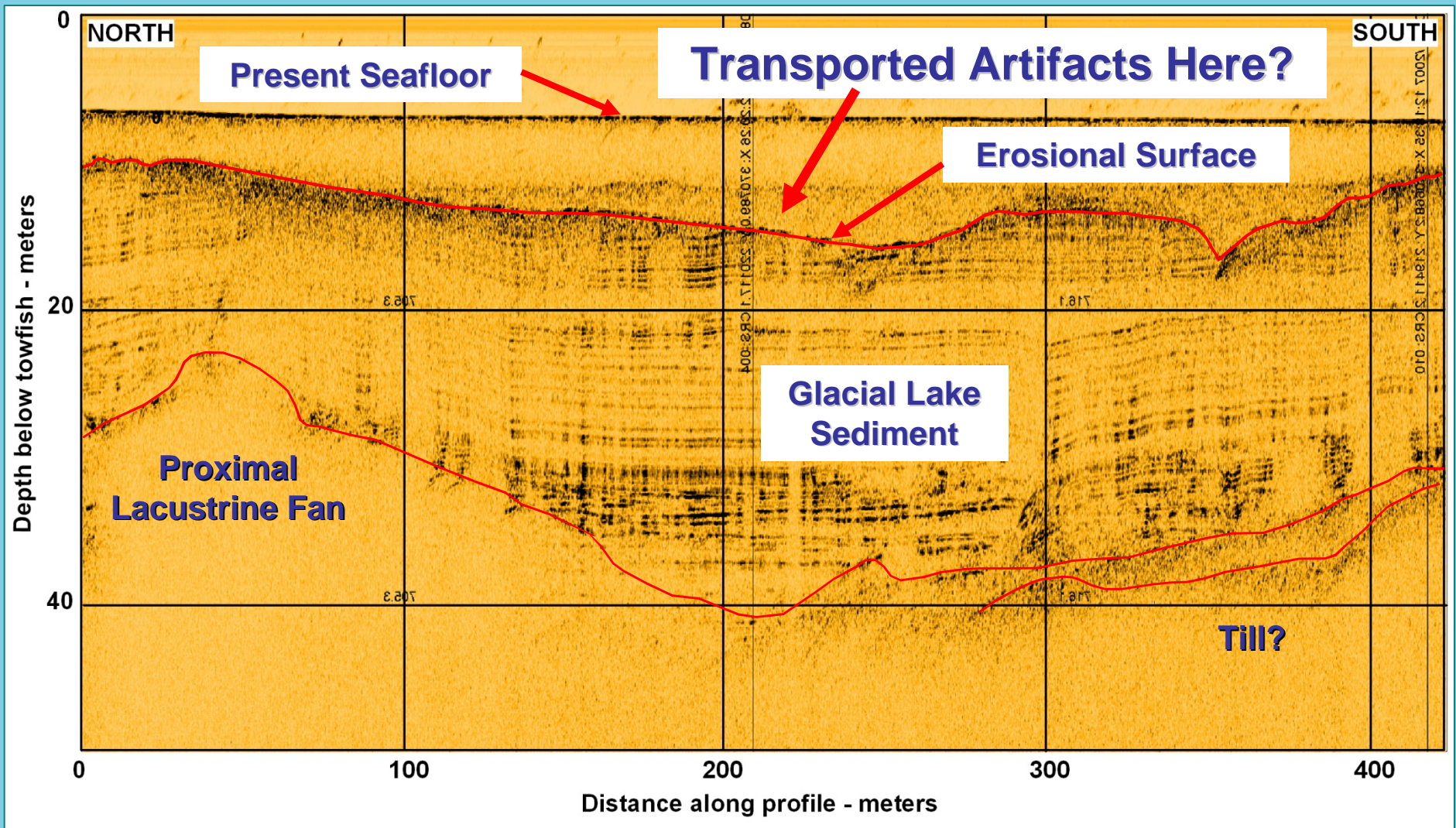
- 30 m below present  
10,000 yBP

Sea level data from Peltier and Fairbanks, 2006  
Elevation data from P. Jordan, RI DEM  
Map created by B.A. Oakley, URI Geosciences





# Subsurface Geology and Preserved Cultural Material



# Narragansett Tribal History

- Narragansett Indian Tribe  
Historic Preservation Office  
(NITHPO)
- Tribal Ethnohistorian,  
Dr. Ella Sekatau
- Tribal history included directly  
in RI regulatory document



# Maritime History & Landscape Contexts

- European Exploration & Colonial Settlement
- Post-Colonial Cultural Landscape
- Military Landscape
- Fisheries Landscape
- Marine Transportation Landscape
- Recreation and Tourism Landscape
- Energy Landscape



# Exploration and Colonial Settlement Landscape

- European settlement as a maritime enterprise
- Verrazano, Block, and Williams
- New York/Rhode Island Sound
- Agricultural Surplus
- Islands
- Trade
- Resources?

# Post-Colonial Cultural Landscape

- Industrial Revolution
- Change in the Rhode Island economy
- Summer “cottages” and resorts
- Steamboat lines and facilities
- Expansion of navy facilities
- Resources?

# Military Landscape

- Warfare had significant affects on the submerged cultural landscape.
- Revolutionary War, WWI and WWII
- 33+ Shipwrecks from Revolutionary War
- Conflict, navy facilities and testing grounds during WWII - including Newport Torpedo Station, Naval Underwater Warfare Center, Naval War College.
- Resources

# Fisheries Landscape

- Rhode Island Fisheries (hook and line, seining, fish traps, menhaden, diesel, trawling, regulation, squid)
- Block Island Fisheries (Indian subsistence, seaweed, cod, proprietary rights, fish traps and pound nets)
- Resources
- Infrastructure

# Marine Transportation and Commercial Landscape

- 17th century Dutch and English Commercial Traffic
- Agricultural exports
- Quaker influence
- Development of Rhode Island shipbuilding
- Newport and Providence
- Sugar, molasses, whale oil, spermaceti candles, livestock, fish, lumber, wheat, and slaves

# Marine Transportation and Commercial Landscape

- Rhode Island ports vis-a-vis New York and Boston in the 19th century
- Steam navigation and steamship lines
- Lighthouses, life saving stations and navigation corridors
- Prohibition
- Resources

# Recreation and Tourism Landscape

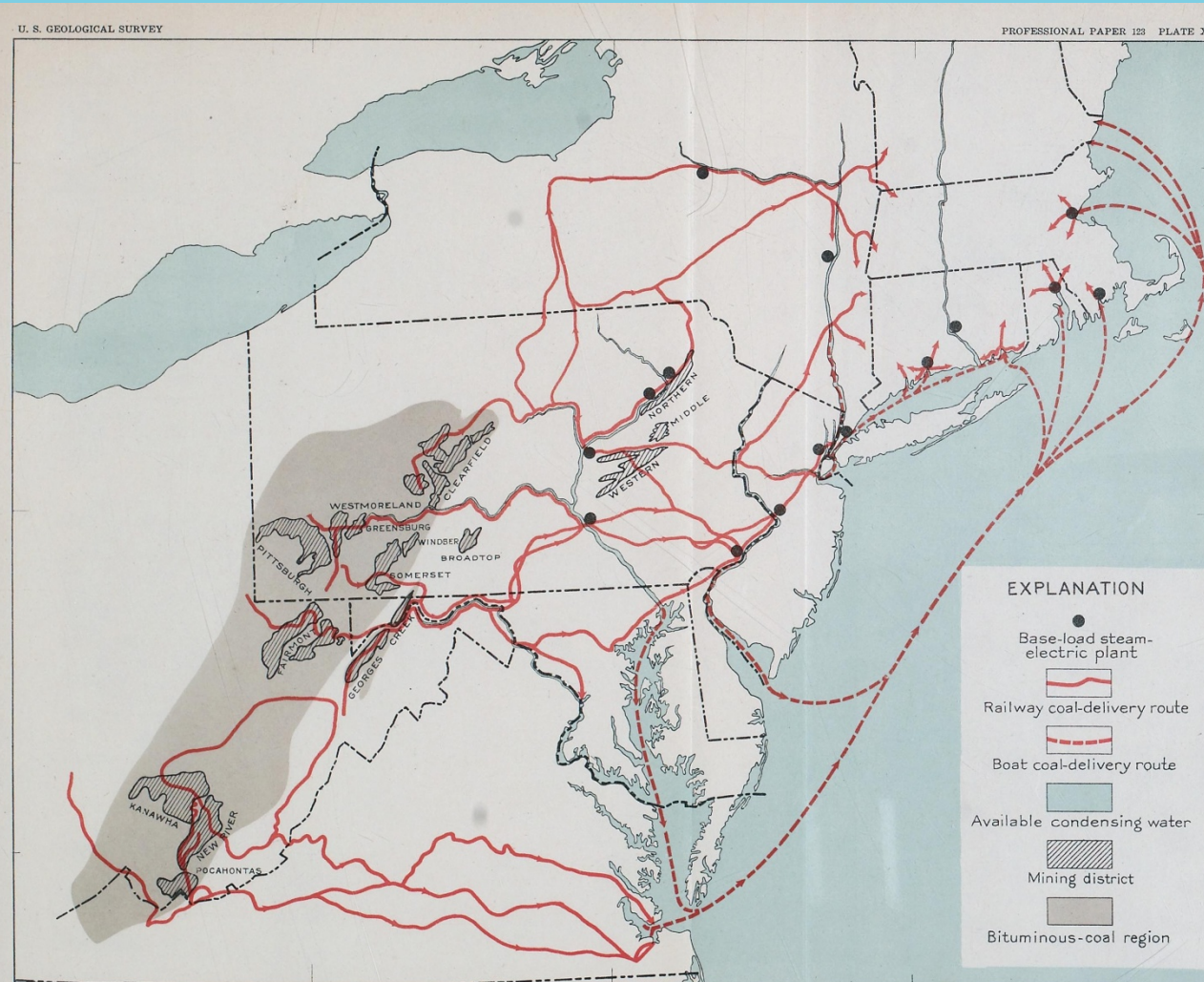
- 19th century resorts at Block Island, Narragansett, Rocky Point, Riverside
- Newport summer vacationing
- Rhode Island as a center for yachting and recreational boating
- Resources



# Energy Landscape

- Indian use of timber resources
- Colonial use of peat resources
- Coal resources (1870s)
- Industrialization (steam engines for textiles, metal manufacturing, coal for industrial energy)
- Significant increase in shipping.
- Resources

# Energy Landscape



LOCATION OF PRINCIPAL COAL-DELIVERY ROUTES FROM BITUMINOUS MINING REGIONS TO BASE-LOAD STEAM ELECTRIC PLANTS IN 1930.

# Submerged Archaeological Sites




- Published sources & databases
- Historic research
- Cartographic research
- Geophysical survey
- Geo-spatial database construction

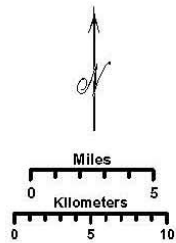




# Potential Historic Shipwreck Locations

## Map Key

-  OceanSAMP Study Area
-  State Waters
-  Potential Shipwrecks

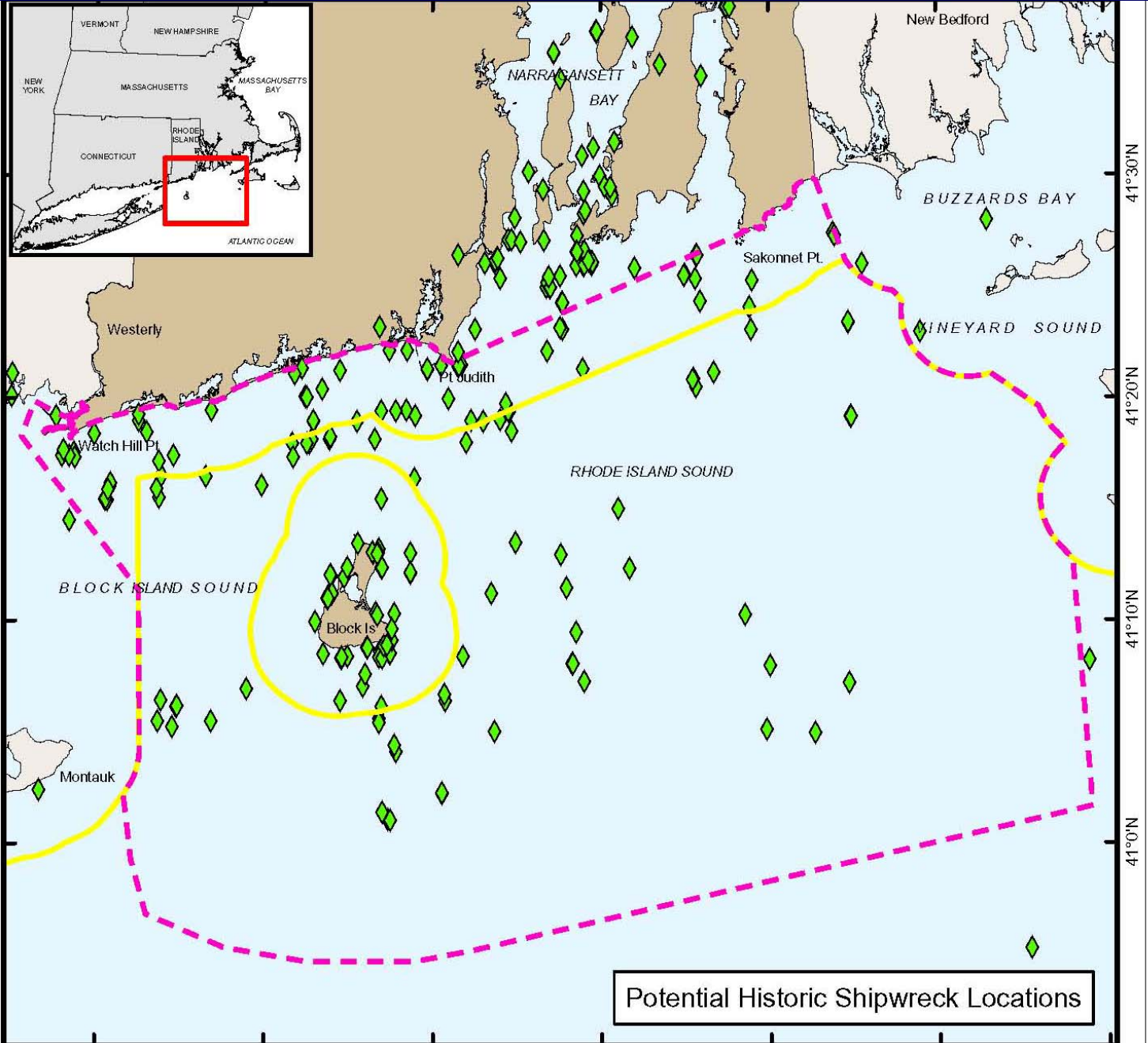


Coordinate System:  
Projection: RI Stateplane  
Units: Feet  
FIPS Zone: 3800  
Datum: NAD83

Map Base Data:  
State Borders: RIGIS; MAGIS; CTGIS  
SAMP Study Area: RI SAMP Database  
State Waters: MMS SLA Boundary  
Bathymetry: Interpolated from NOS Soundings

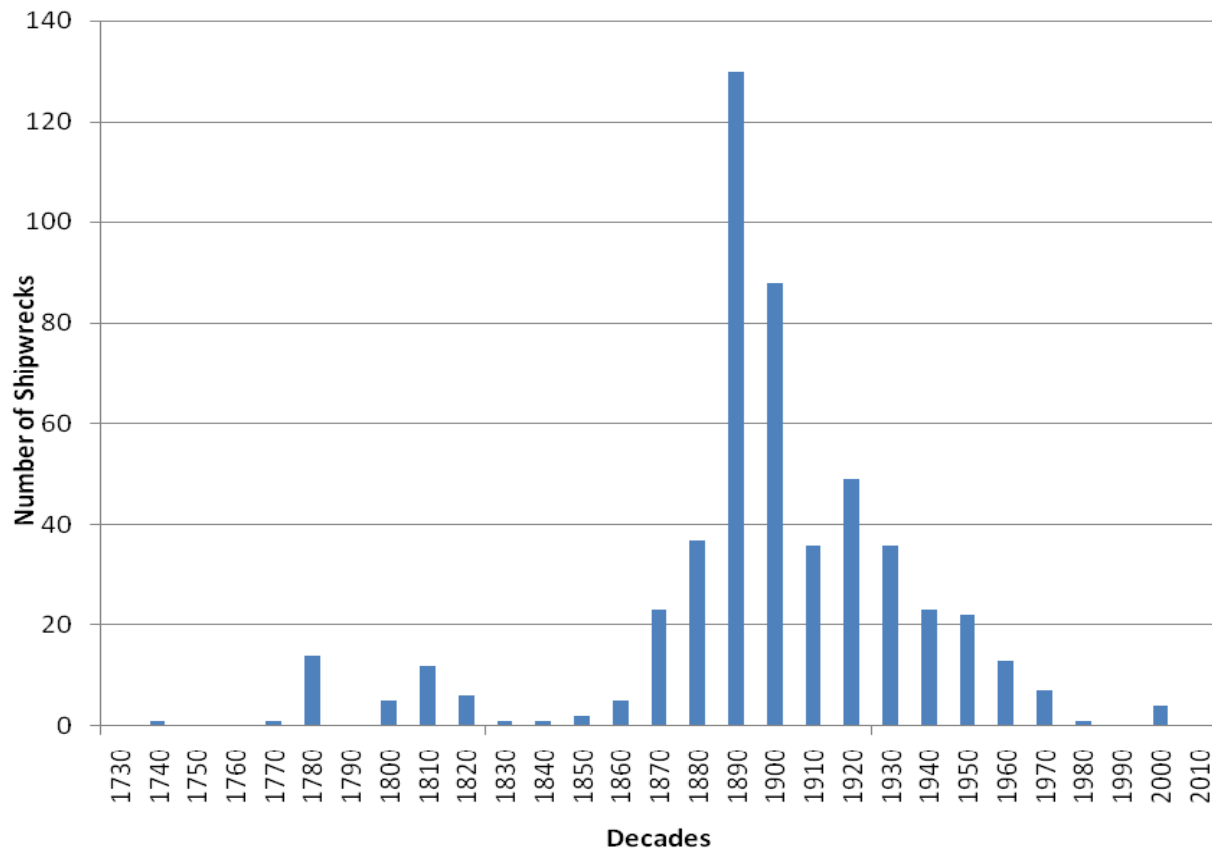
For Project Background Information:  
<http://seagrant.gso.uri.edu/oceansamp>

For Project Map and Data Products:  
[http://www.narbay.org/d\\_projects/oceansamp](http://www.narbay.org/d_projects/oceansamp)



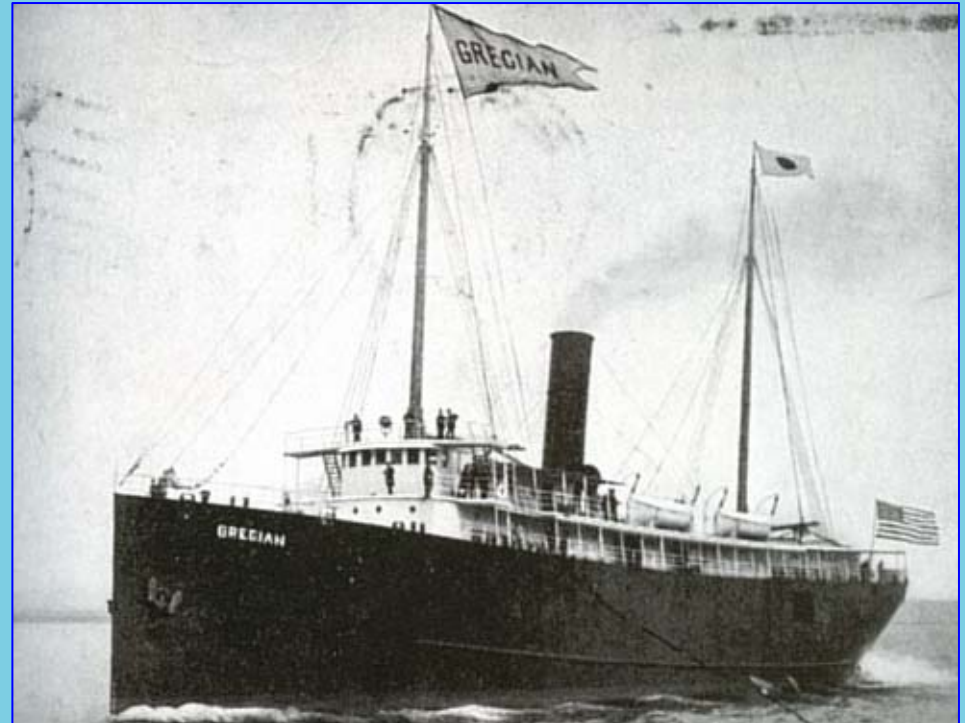
# Submerged Archaeological Sites - Temporal Distribution

Rhode Island Shipwrecks by Decade (n=517)



# Grecian

- Freighter/passenger steamer
- Built in 1900
- Lost after collision with City of Chattanooga, in fog in 1932



# U-853

- German Submarine
- Built 1943
- Sunk by USS Atherton, USS Moberly and USS John D. Ericsson in May 1945



# Lightburne

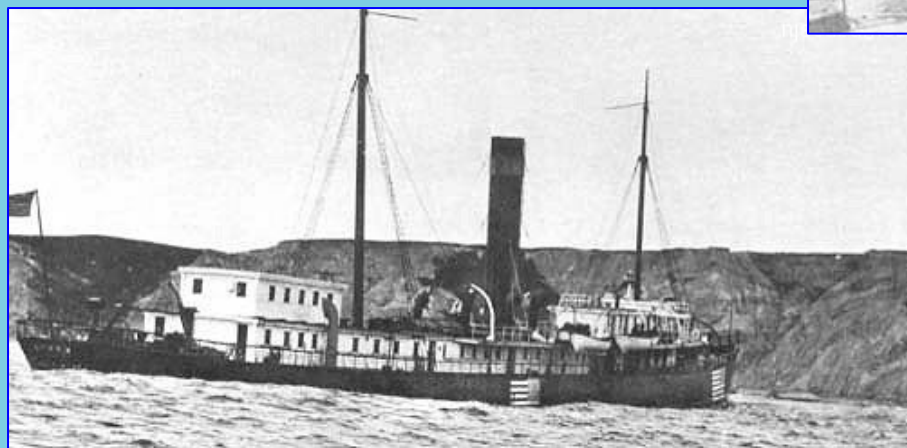
- Tanker
- Built in 1919
- Lost in Fog, 1939





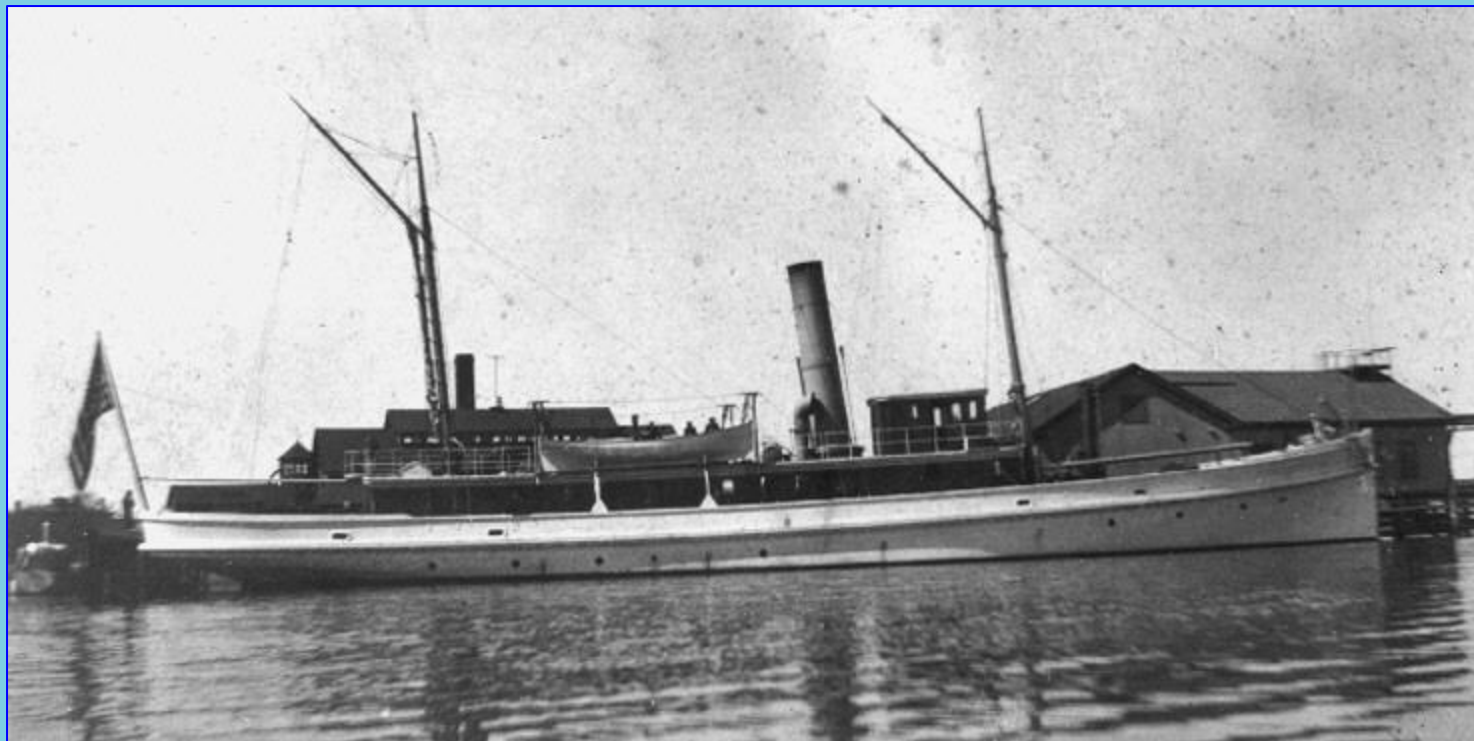
# Essex

- First passenger liner converted to freighter (1940)
- Built in 1890
- Ran aground 1941



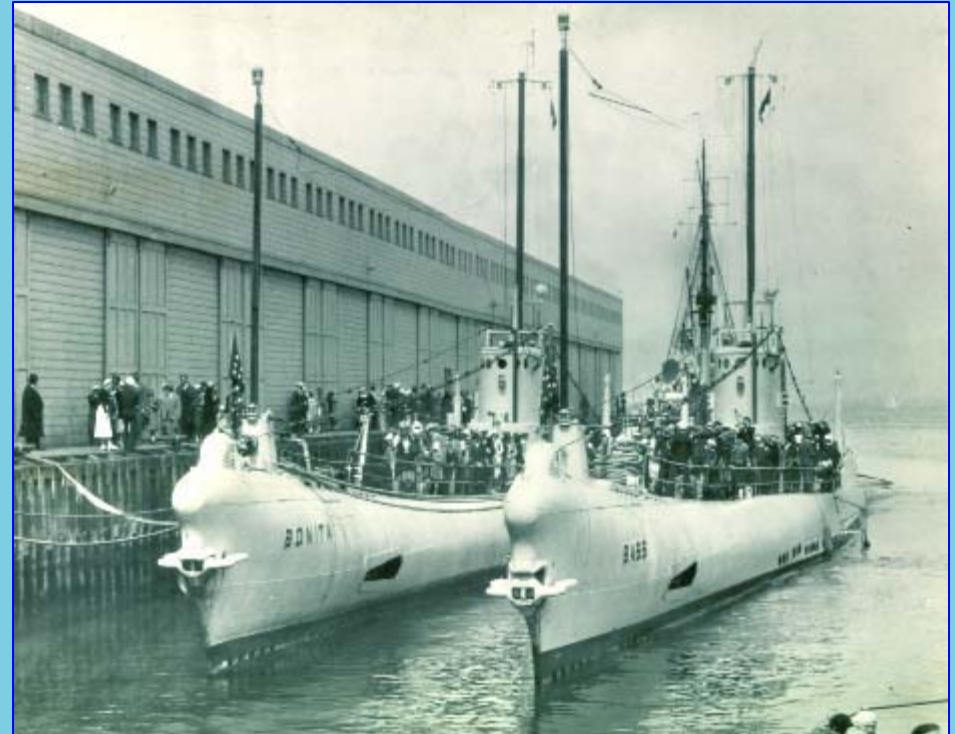
# USS Leyden

- Navy tug
- Built in 1866
- Stranded in Fog, 1903

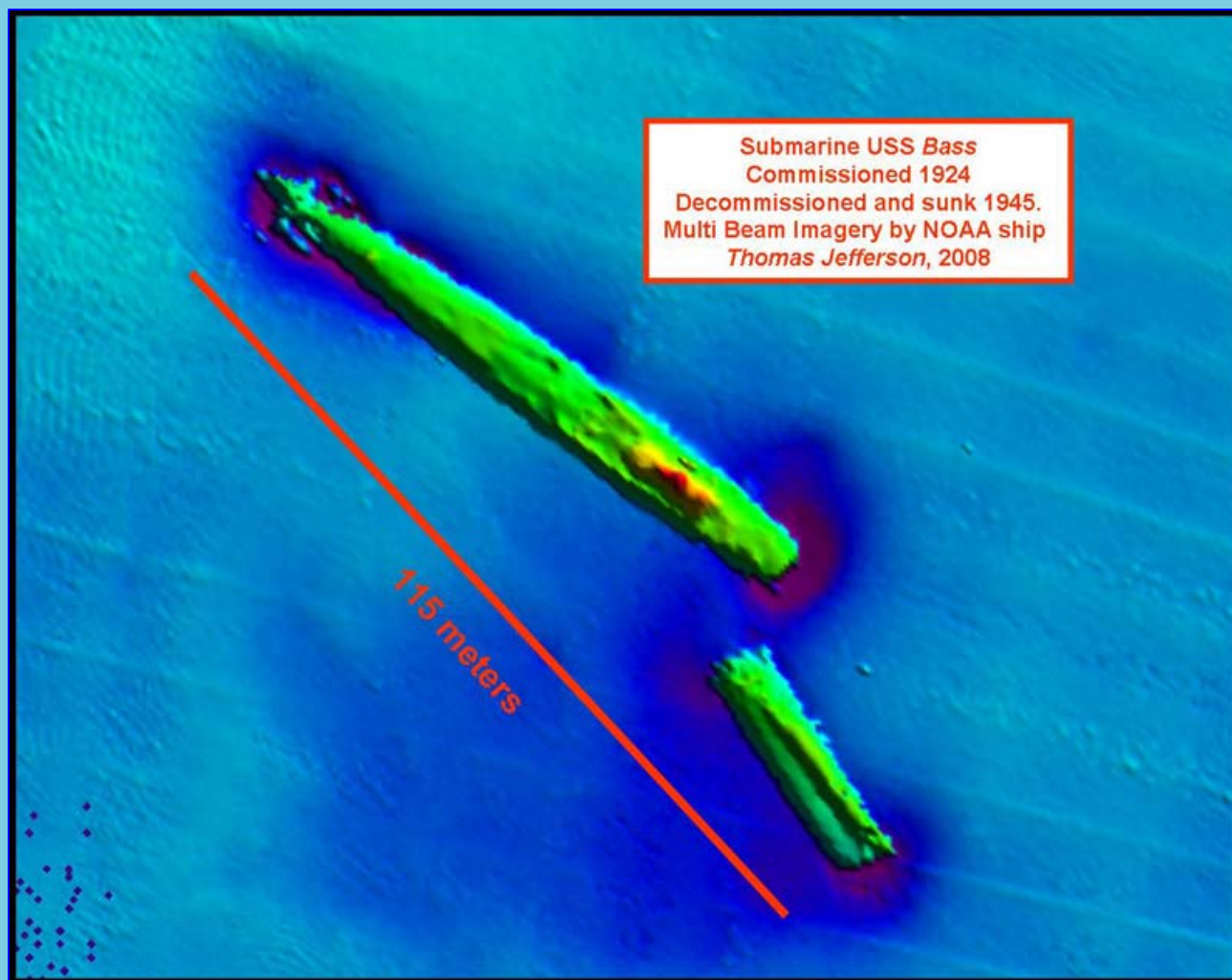


# USS Bass

- US Submarine
- Built in 1924
- Sunk using Torpex depth charges in March 1945

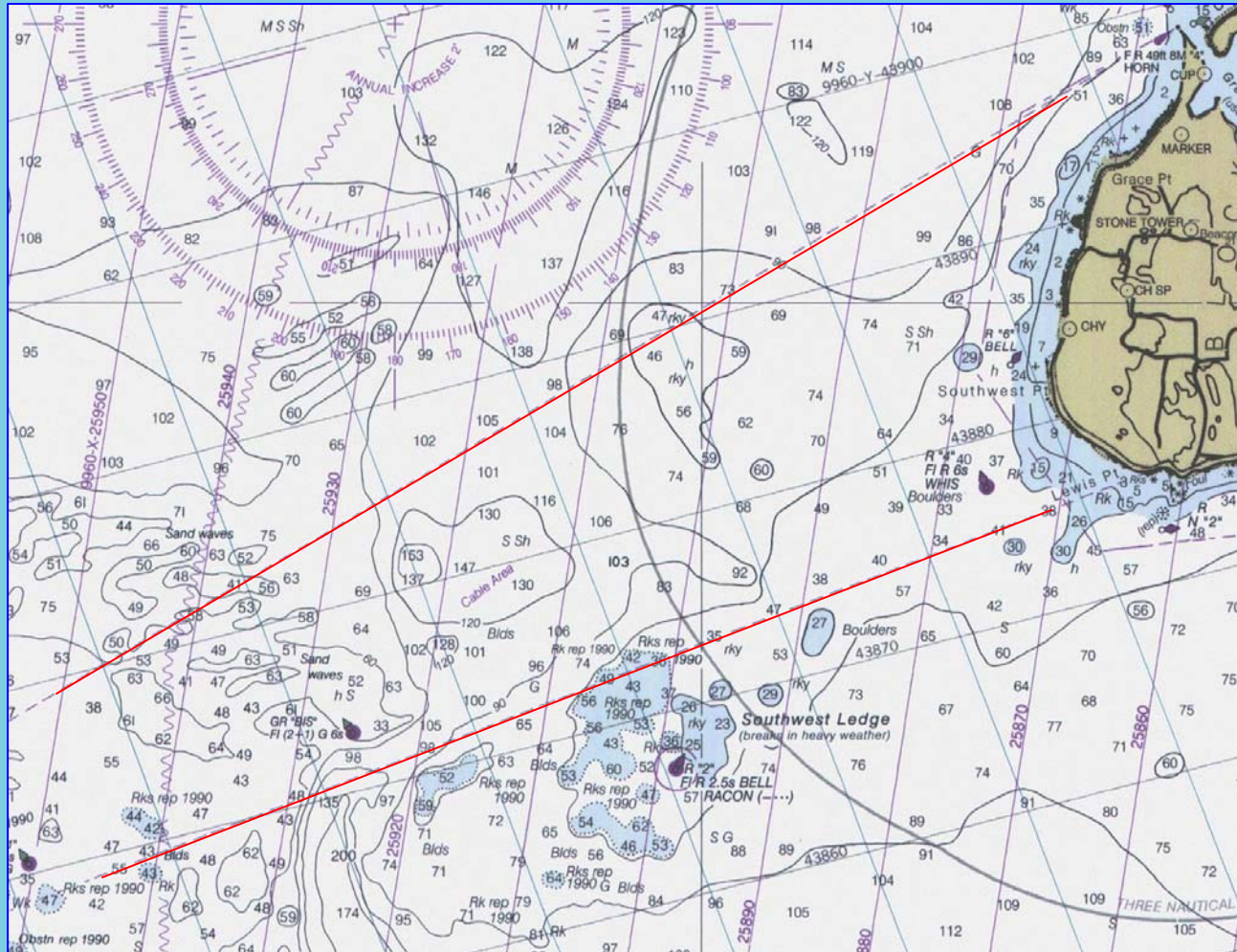


# USS Bass

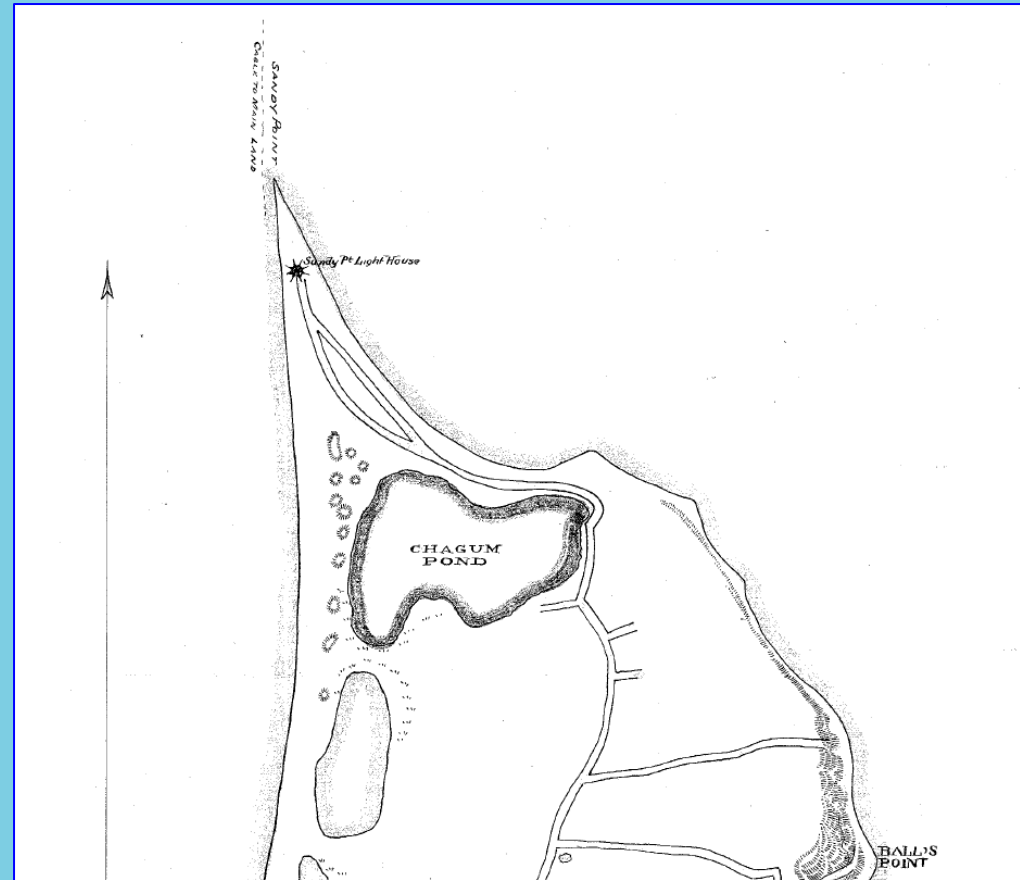
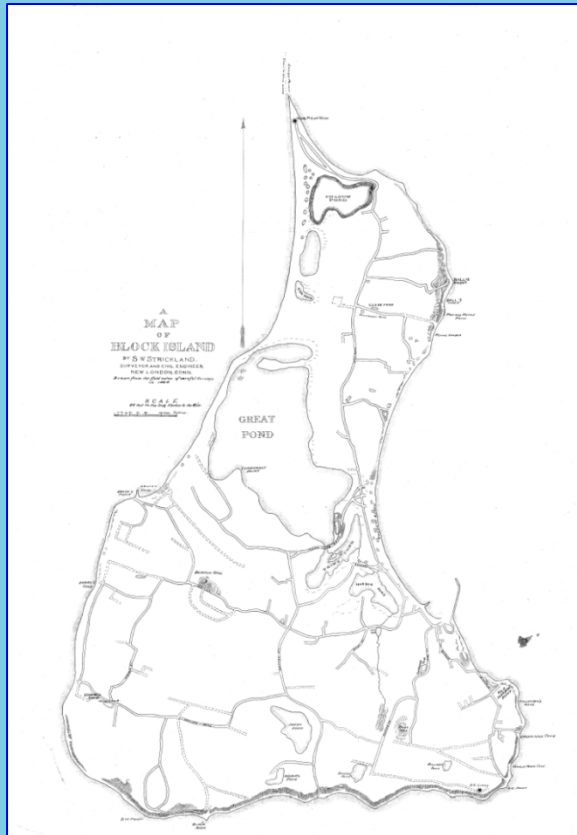




# Telecommunication Cables and Corridors - SW Cable Area



# Block Island - 1884 First Submarine Cable

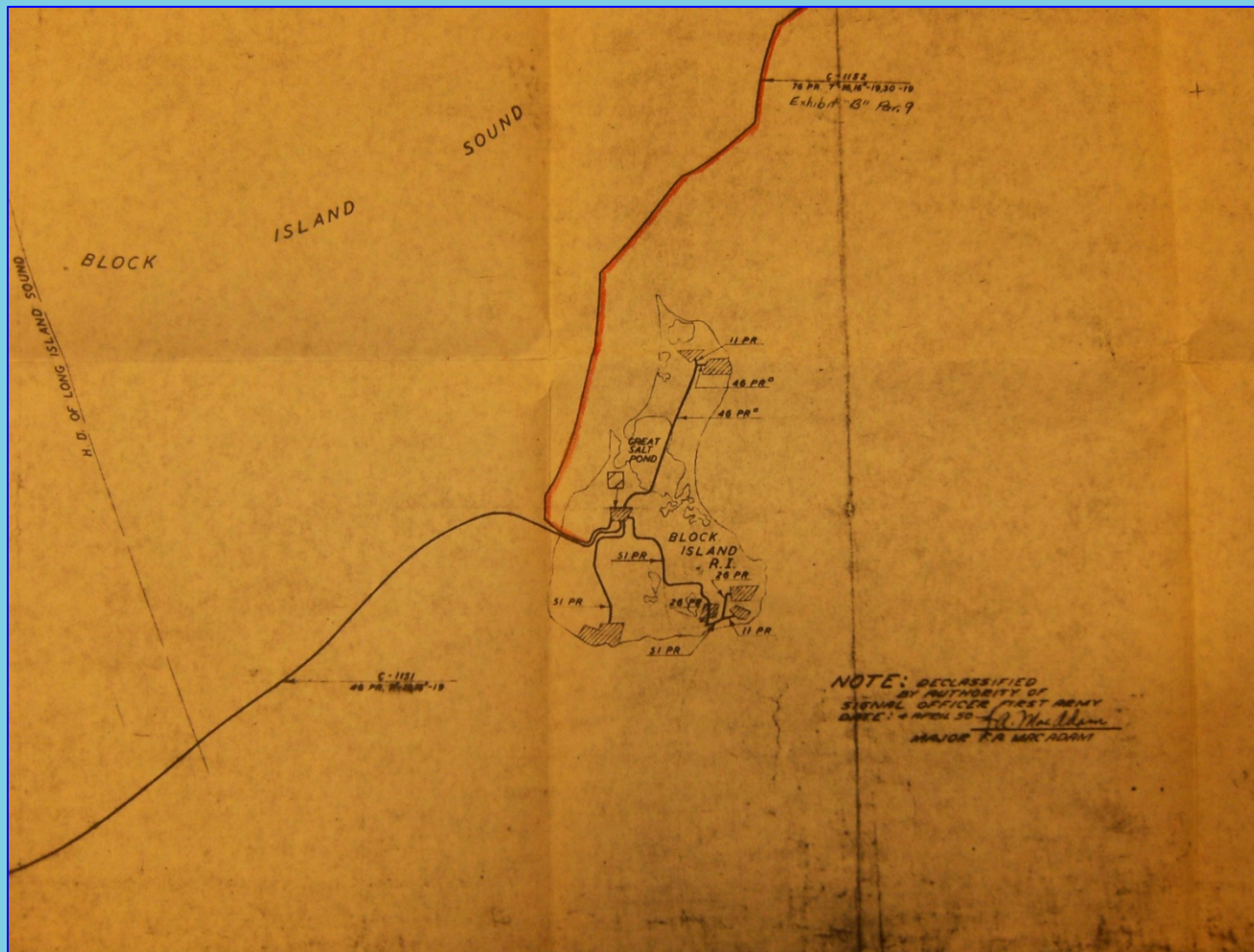




# WWII Cable Easements



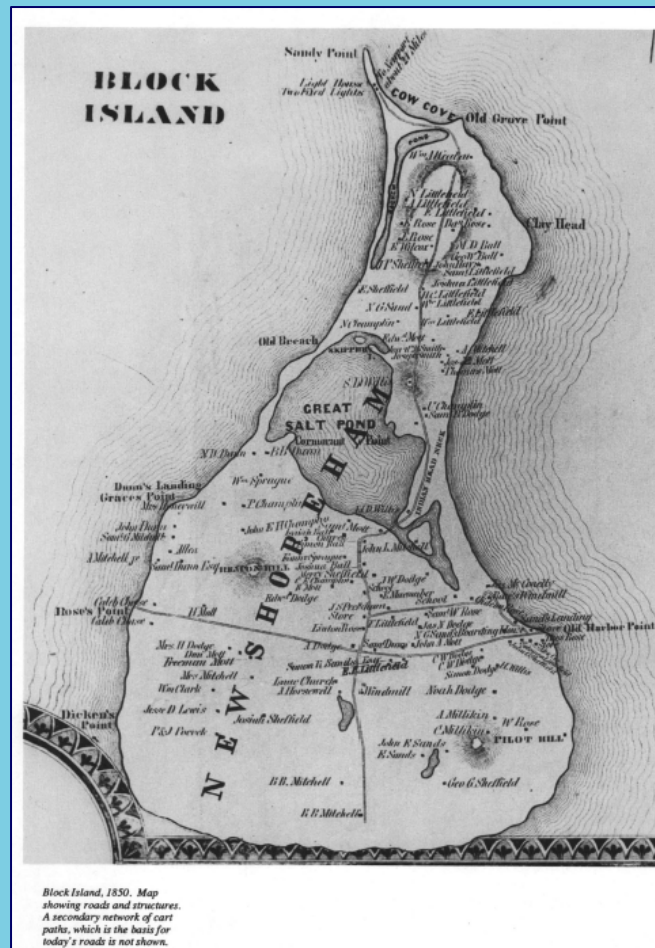
# Submarine Cables and De-Accession



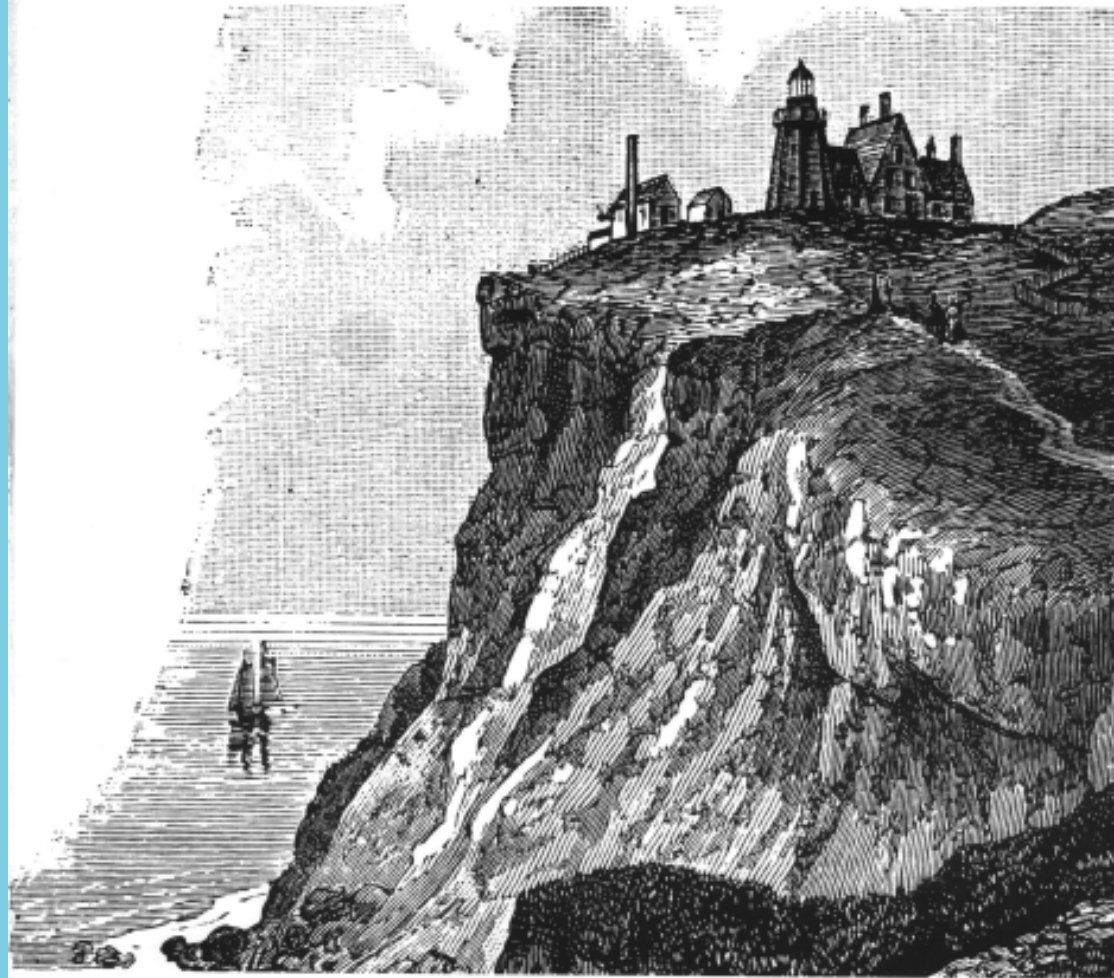


# Onshore Historic Sites Adjacent to SAMP Area

- Properties Listed on National Register = 33  
(# on Block Island = 7)
- Candidate Properties = 23  
(# on Block Island = 5)
- Block Island Database - 117 properties identified as “contributing” & “eligible”



# Historic and Architectural Resources of Block Island, Rhode Island



Rhode Island Historical Preservation Commission  
1991



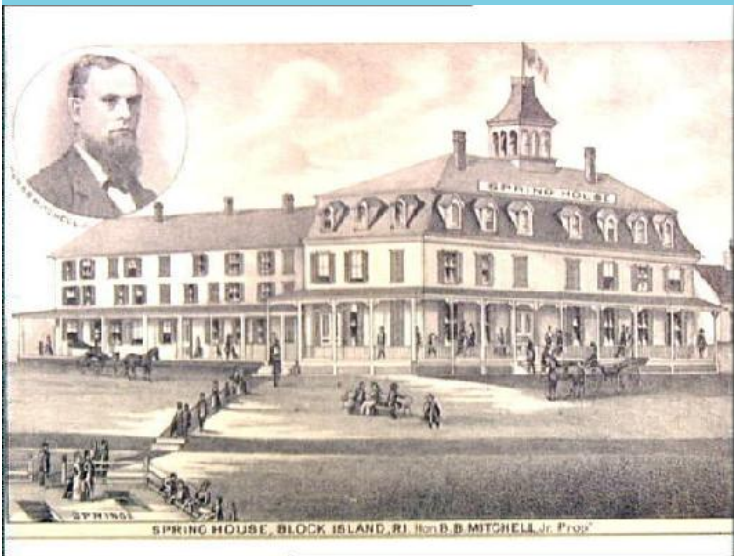
**Historic farms - one part of the larger cultural landscape of Block Island and coastal Rhode island**







## Seaside hotels, built to capture the ocean view





## Summer cottages from the era of steamboat tourism

# Historic aids to navigation

*North Light (1867), Sandy Point. View from southeast showing lighthouse and setting. Fourth structure on site, it was manned until 1955 and lighted until 1970.*



*The West Side Life Saving Station (1872), Cooneymus Road. Courtesy of Rhode Island Historical Society. 1890 photograph. Original appearance before renovation for a residence.*



*Fresnel Lens, South East Light (1874). Photograph by Gerald F. Abbott, M.D. This rotating lens was made in Paris in 1880.*



*Southeast Light (1874), South East Light Road. Courtesy of Rhode Island Historical Society. Stereopticon view. Built for \$75,000, this landmark rises over 200 feet above the Atlantic, and needs to be moved to preserve it from severe cliff erosion.*





# National Historic Landmark (NHL) Adjacent to SAMP Area

- Southeast Light, Block Island
- NHL status in 1997
- Statement of Significance:  
“...outstanding as one of the finest lighthouses constructed by the U.S. Light House Board in the 19th century.”





# Cultural & Historic Resource Policies

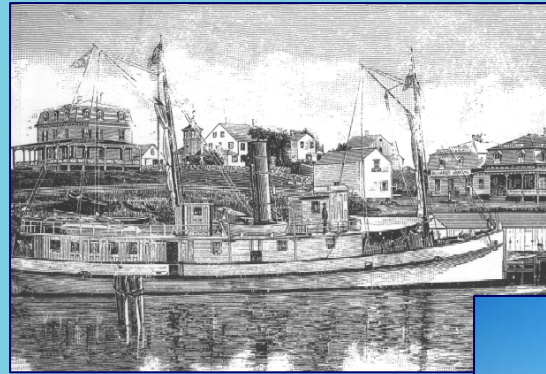
- Recognize importance of cultural, historic & tribal resources
- Engage federal / state agencies, and NITHPO
- Follow policies in CRMC “Red Book” & Section 106 of National Historic Preservation Act (NHPA)
- Archaeological surveys will be required per RIHPHC’s “Performance Standards and Guidelines for Archaeological Projects”

# Where We Are

- June 1<sup>st</sup> - Stakeholder Meeting
- June 18<sup>th</sup> - Public Workshop
- June 26<sup>th</sup> - Public Comment Deadline
- July 13<sup>th</sup> - CRMC Full Council, Public Hearing

# RI Ocean Special Area Management Plan

## Overview of the Ocean SAMP *Cultural and Historic Resources* Chapter



Ocean SAMP Stakeholder Meeting  
June 1, 2010