

RI Ocean Special Area Management Plan

Overview of the Ocean SAMP *Marine Transportation, Navigation and Infrastructure* Chapter



Michelle Armsby and Tiffany Smythe
URI Coastal Resources Center/RI Sea Grant
November 4, 2009

Presentation Overview

- Chapter overview and status
- Methodology
- Some preliminary findings
- Policy issues
- Next steps



Chapter Overview

- Marine Transportation System (MTS)
 - Cargo ships and ferries
 - Government and support vessels
- Naval operations
- Navigation
 - “Traffic management system”
- Infrastructure
 - Cables

Chapter Overview

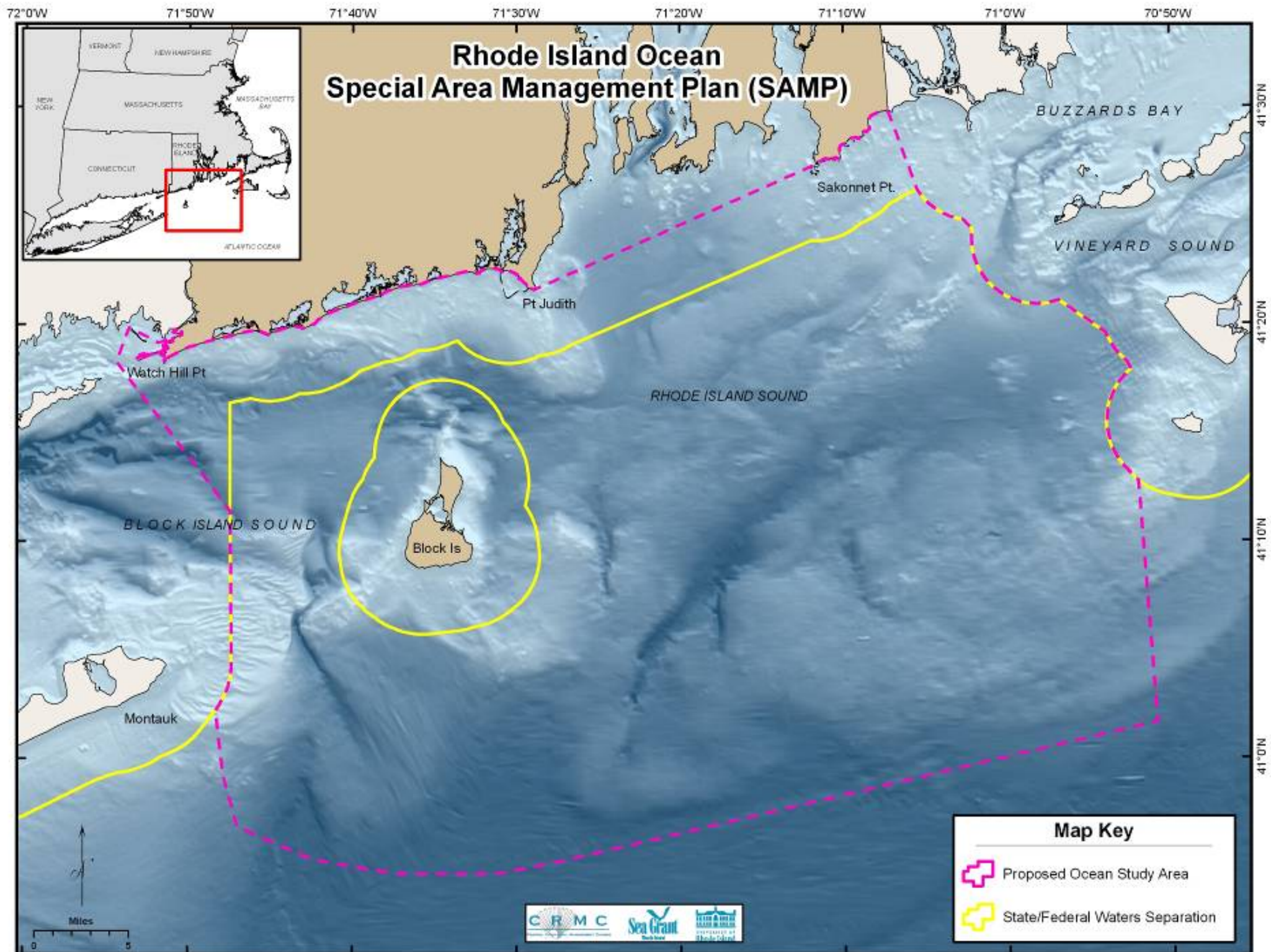
- 700 Introduction
- 710 History of Marine Transportation
Naval Activities
- 720 Marine Transportation
- 730 Ports and Harbors
- 740 Navigation Features
- 750 Other Infrastructure
- 760 Value of Marine Transportation
and Navigational Uses
- 770 Marine Transportation, Navigation
and Infrastructure Policies
- 780 Works Cited





Methodology



- Review of reference documents
- Stakeholder input
- Literature and data search
- Data analysis and mapping



Map Key

-  Proposed Ocean Study Area
-  State/Federal Waters Separation



SAMP Area Maritime History

- Over 400 years of use:
 - Maritime Commerce
 - Military Operations
- Economic growth
- Energy production










Commercial Shipping

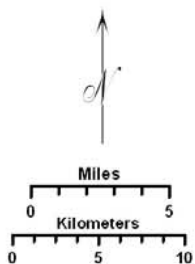
- This is where we should 'tell a story' about shipping in the SAMP area and how it is, and always has been, essential to RI community & economies.
- Highlight transport in and out of Bay
- Highlight RI cargos - esp energy
- Highlight coastwise transit - "crossroads"

Rhode Island Ocean Special Area Management Plan (SAMP)

71°50'W 71°40'W 71°30'W 71°20'W 71°10'W 71°0'W 70°50'W

Map Key

-  OceanSAMP Study Area
 -  State/Federal Waters
- Automatic Identification System (AIS) Vessel Counts
-  50 - 100
 -  101 - 250
 -  251 - 500
 -  501 - 1000
 -  >1000



Coordinate System:

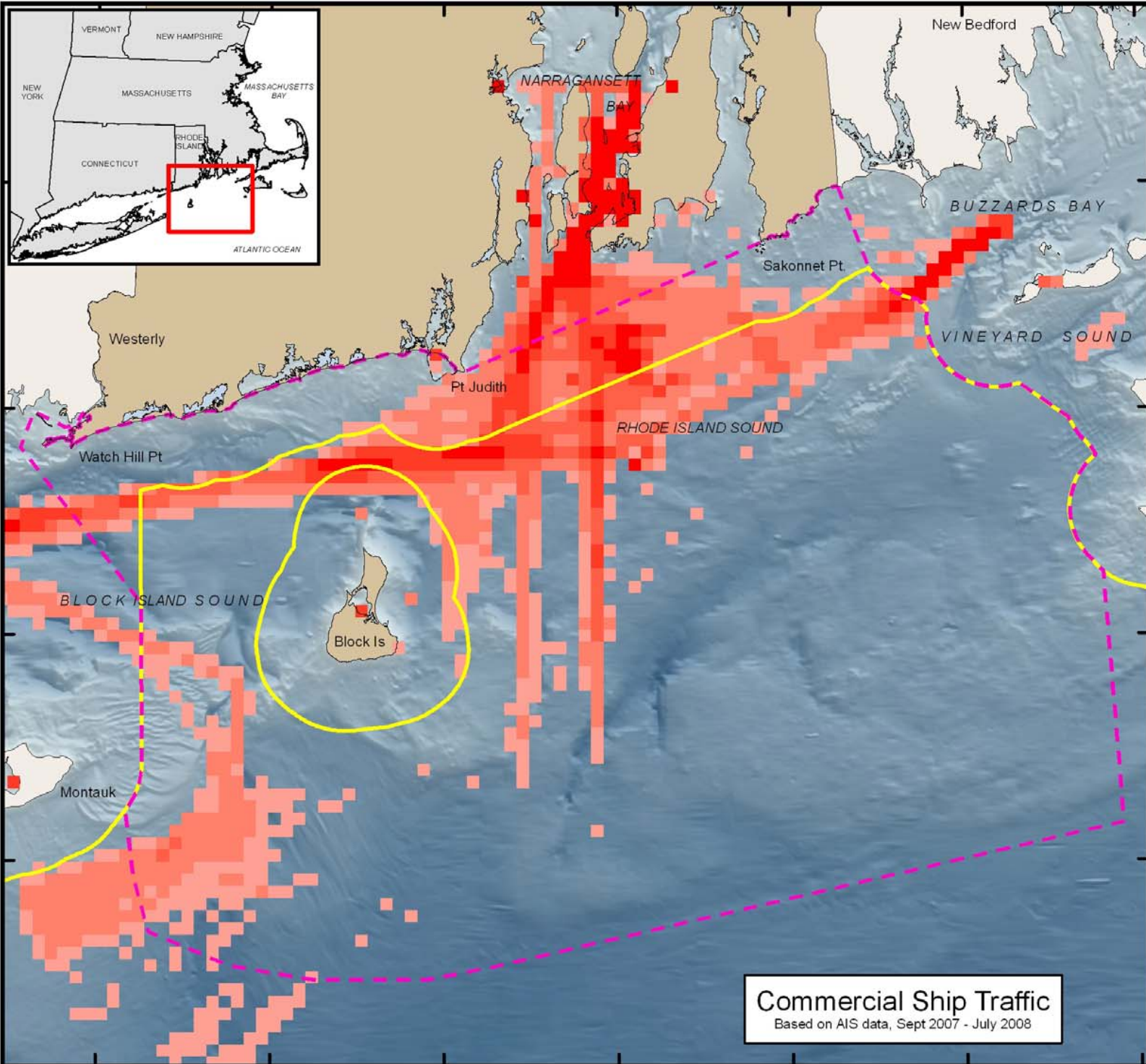
Projection: RI Stateplane
 Units: Feet
 FIPS Zone: 3800
 Datum: NAD83

Map Base Data:

State Borders: RIGIS; MAGIS; CTGIS
 SAMP Study Area: RI SAMP Database
 State Waters: MMS SLA Boundary
 Bathymetry: Interpolated from NOS Soundings

For Project Background Information:
<http://seagrant.gso.uri.edu/oceansamp>

For Project Map and Data Products:
http://www.narrbay.org/d_projects/oceansamp






Commercial Ship Traffic
 Based on AIS data, Sept 2007 - July 2008

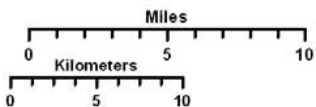
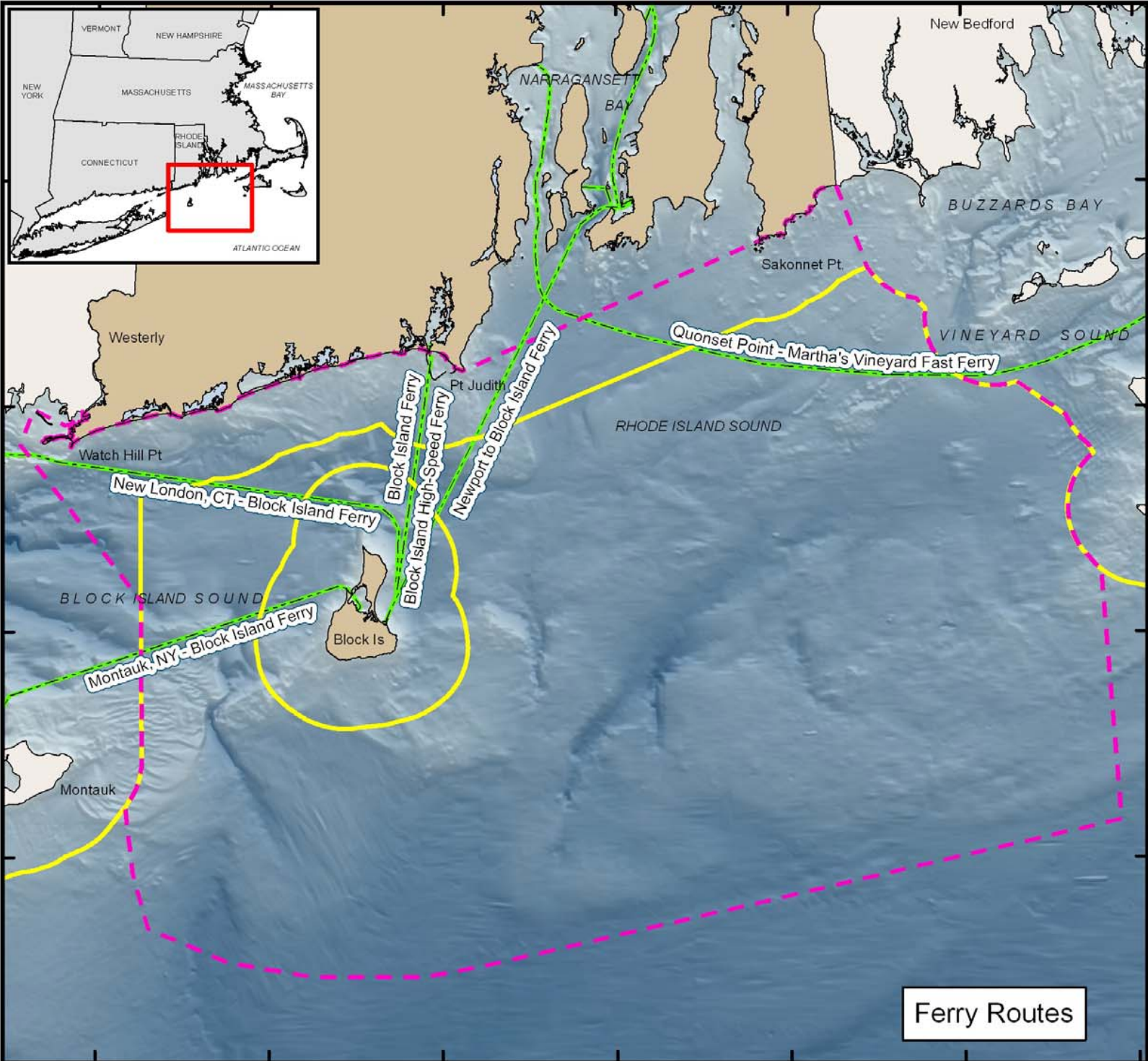
41°30'N
41°20'N
41°10'N
41°0'N

Rhode Island Ocean Special Area Management Plan (SAMP)

71°50'W 71°40'W 71°30'W 71°20'W 71°10'W 71°0'W 70°50'W

Map Key

-  OceanSAMP Study Area
-  State/Federal Waters
-  Ferry Routes



Coordinate System:

Projection: RI Stateplane
 Units: Feet
 FIPS Zone: 3800
 Datum: NAD83

Map Base Data:

State Borders: RIGIS; MAGIS; CTGIS
 SAMP Study Area: RI SAMP Database
 State Waters: MMS SLA Boundary
 Bathymetry: Interpolated from NOS Soundings

For Project Background Information:
<http://seagrant.gso.uri.edu/oceansamp>

For Project Map and Data Products:
http://www.narrabay.org/d_projects/oceansamp



Ferry Routes

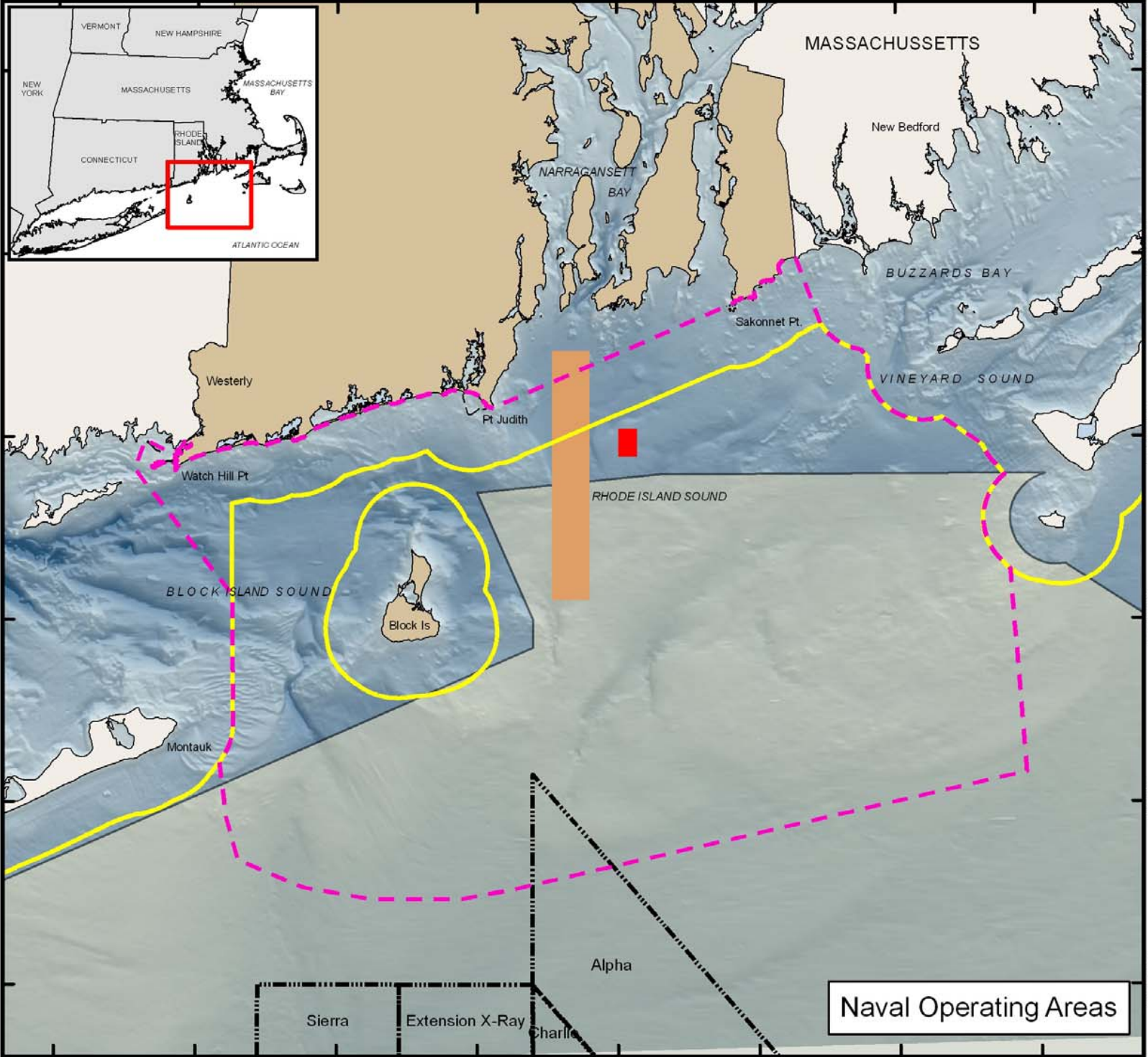
41°30'N
41°20'N
41°10'N
41°0'N

Rhode Island Ocean Special Area Management Plan (SAMP)

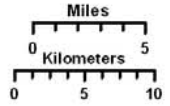
72°0'W 71°50'W 71°40'W 71°30'W 71°20'W 71°10'W 71°0'W 70°50'W

Map Key

-  OceanSAMP Study Area
-  State/Federal Waters
- Restricted Areas**
-  Mine Laying Area
-  Torpedo Testing Area
- Naval Operations**
-  Naval Fleet Sub Lane
-  Narragansett Bay Op Area



41°40'N
41°30'N
41°20'N
41°10'N
41°0'N
40°50'N



Coordinate System:
 Projection: RI Stateplane
 Units: Feet
 FIPS Zone: 3800
 Datum: NAD83

Map Base Data:
 State Borders: RIGIS; MAGIS; CTGIS
 SAMP Study Area: RI SAMP Database
 State Waters: MMS SLA Boundary
 Bathymetry: Interpolated from NOS Soundings

For Project Background Information:
<http://seagrant.gso.uri.edu/oceansamp>

For Project Map and Data Products:
http://www.narrbay.org/d_projects/oceansamp











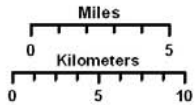
Naval Operating Areas

Rhode Island Ocean Special Area Management Plan (SAMP)

71°50'W 71°40'W 71°30'W 71°20'W 71°10'W 71°0'W 70°50'W

Map Key

-  OceanSAMP Study Area
-  State Waters
-  Proposed General Anchorage
-  Pilot Boarding Area
-  Precautionary Area
-  Recommended Vessel Route
-  Shipping Lanes
-  Separation Zone



Coordinate System:

Projection: RI Stateplane

Units: Feet

FIPS Zone: 3800

Datum: NAD83

Map Base Data:

State Borders: RIGIS; MAGIS; CTGIS

SAMP Study Area: RI SAMP Database

State Waters: MMS SLA Boundary

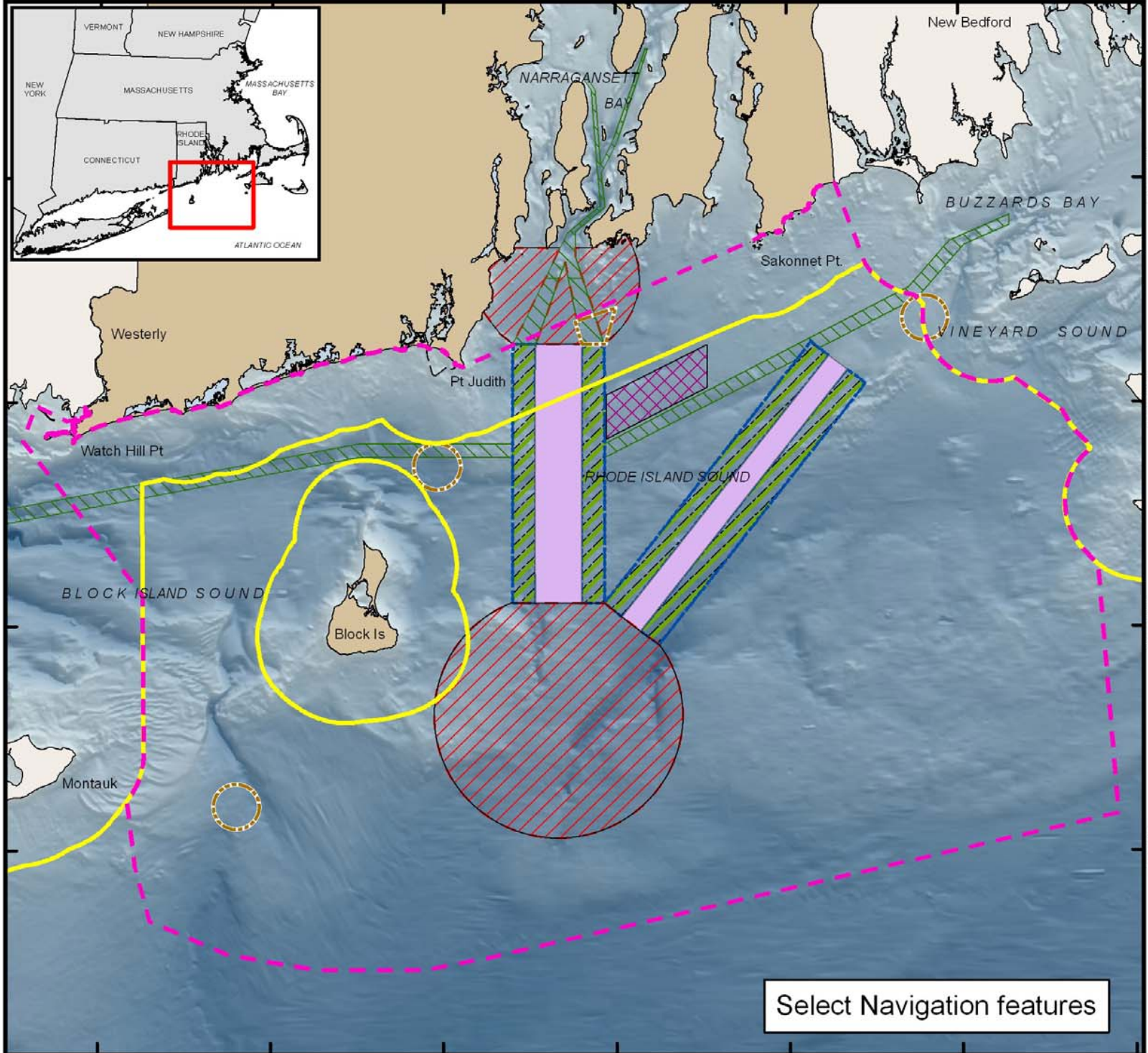
Bathymetry: Interpolated from NOS Soundings

For Project Background Information:

<http://seagrant.gso.uri.edu/oceansamp>

For Project Map and Data Products:

http://www.narrbay.org/d_projects/oceansamp



Select Navigation features

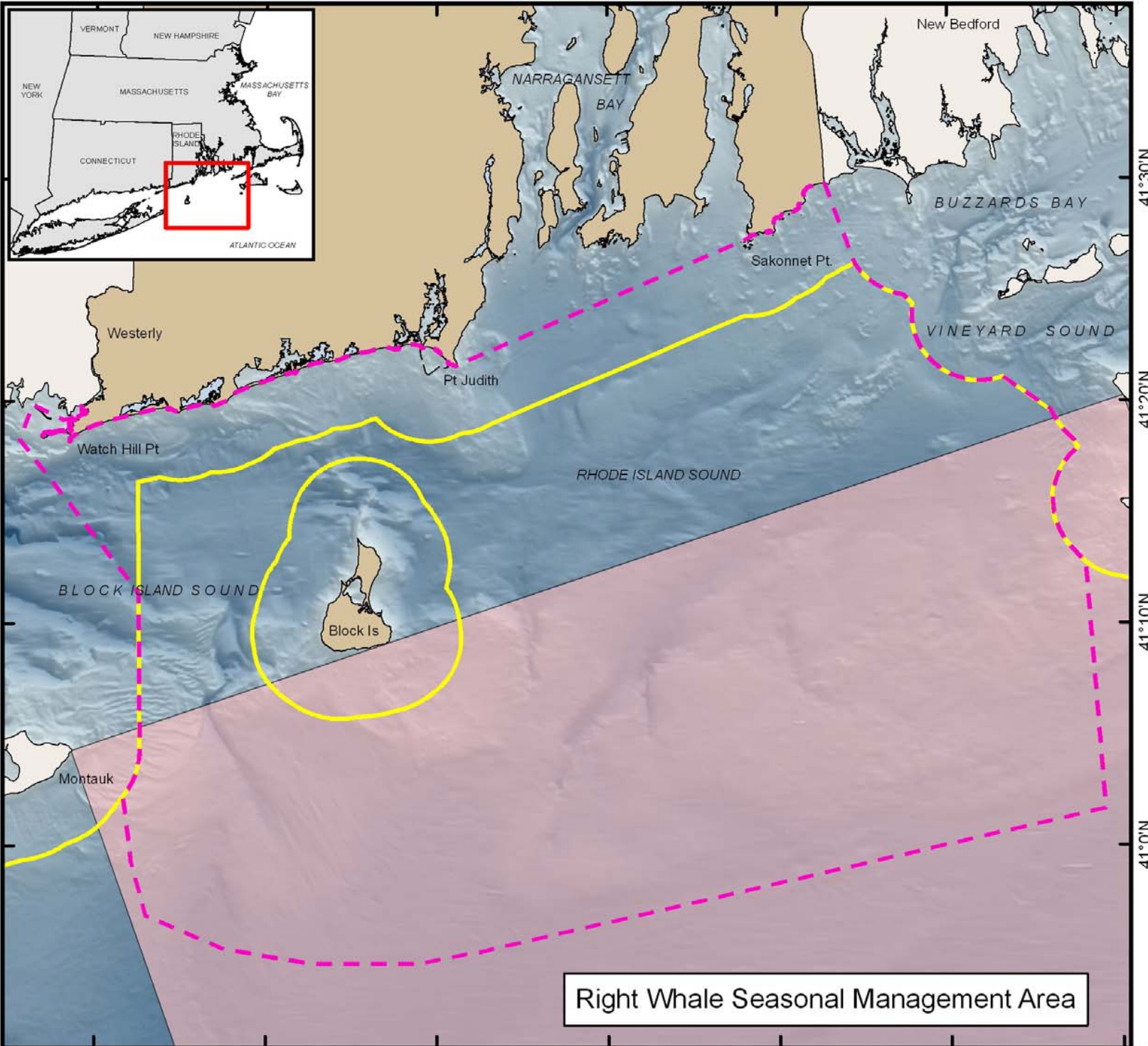
Rhode Island Ocean Special Area Management Plan (SAMP)

71°50'W 71°40'W 71°30'W 71°20'W 71°10'W 71°0'W 70°50'W

Map Key

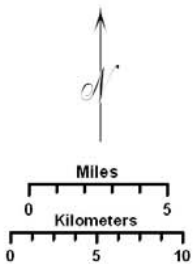
-  OceanSAMP Study Area
-  State Waters
-  Right Whale Seasonal Management*

*Seasonal speed restriction in effect Nov 1st through April 30th established by NOAA Fisheries. Vessels over 65 feet in length must slow to speeds of 10 knots or less



41°30'N
41°20'N
41°10'N
41°0'N

Right Whale Seasonal Management Area



Coordinate System:

Projection: RI Stateplane
Units: Feet
FIPS Zone: 3800
Datum: NAD83

Map Base Data:

State Borders: RIGIS; MAGIS; CTGIS
SAMP Study Area: RI SAMP Database
State Waters: MMS SLA Boundary
Bathymetry: Interpolated from NOS Soundings

For Project Background Information:
<http://seagrant.gso.uri.edu/oceansamp>

For Project Map and Data Products:
http://www.narrbay.org/d_projects/oceansamp



Ports and the Economic Impact of Marine Transportation

Rhode Island Ocean Special Area Management Plan (SAMP)

71°50'W 71°40'W 71°30'W 71°20'W 71°10'W 71°0'W 70°50'W

Map Key

OceanSAMP Study Area

State Federal Waters

Dumping Areas

Underwater Cables

AT&T Cables

TAT 12/13 Interlink

TAT 10 - Inactive

TAT 12

TAT 6 - Inactive

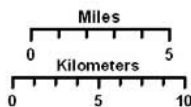
Reliance Globalcom

FA-1 North

Verizon

CB-1

Note: All cables are also NOAA Electronic Navigational Charts cables



Coordinate System:

Projection: RI Stateplane

Units: Feet

FIPS Zone: 3800

Datum: NAD83

Map Base Data:

State Borders: RIGIS; MAGIS; CTGIS

SAMP Study Area: RI SAMP Database

State Waters: MMS SLA Boundary

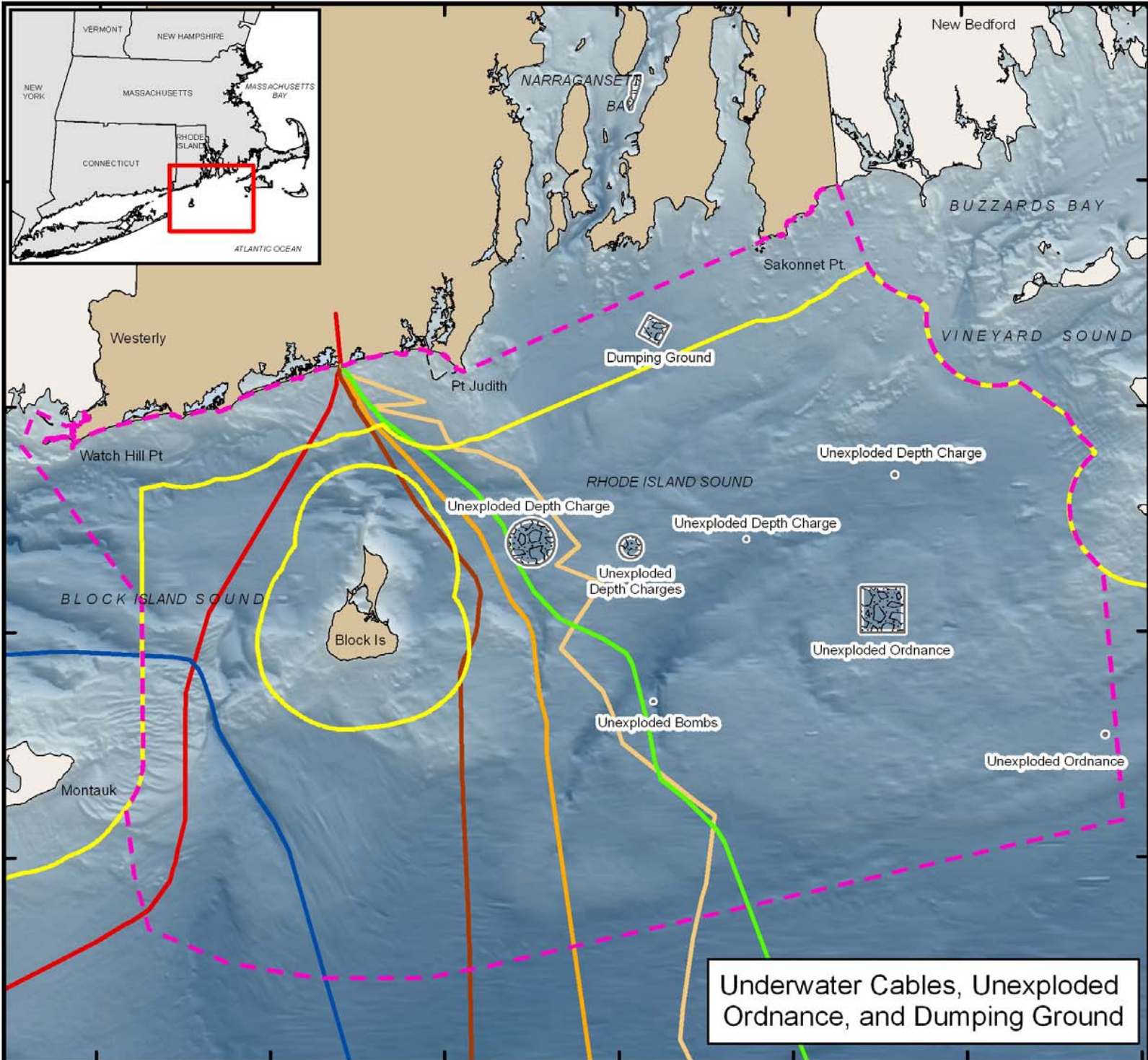
Bathymetry: Interpolated from NOS Soundings

For Project Background Information:

<http://seagrant.gso.uri.edu/oceansamp>

For Project Map and Data Products:

http://www.narrbay.org/d_projects/oceansamp



Underwater Cables, Unexploded Ordnance, and Dumping Ground

Marine Transportation, Navigation and Infrastructure Policy Issues

Marine Transportation, Navigation and Infrastructure and Offshore Renewable Energy



- Let's list all main topics here
- And THEN refer to renewable energy chapter

Thank you!

Please read the chapter online at:
seagrant.gso.uri.edu/oceansamp/
and send in your comments!

Michelle Armsby: 874-6493 or michelle_armsby@mail.uri.edu
Tiffany Smythe: 874-6197 or tsmythe@crc.uri.edu

Ocean SAMP Document

- Introduction
- Ecology of the SAMP Area
- Cultural and Historic Resources
- Fisheries Resources and Uses
- Recreation and Tourism
- *Marine Transportation, Navigation and Infrastructure*
- Global Climate Change
- Renewable Energy
- Other Future Uses
- Existing Policies, Procedures, Zoning and Regulations