

Chapter 3

Global Climate Change

Table of Contents

Section 300. The Ocean SAMP in a Climate Change World

Section 310. Climate Change Observed Trends: Global, US Northeast, Rhode Island

- 310.1 Air temperature is increasing
- 310.2 Ocean temperature is increasing
- 310.3 Sea level is rising at an accelerated rate
- 310.4 Storminess is increasing
- 310.5 Precipitation and weather patterns are changing
- 310.6 Ocean acidification is occurring

Section 320. Future Climate Change Projections

- 320.1 Air temperature projections
- 320.2 Ocean temperature projections
- 320.3 Sea level rise and flooding projections
- 320.4 Storminess projections
- 320.5 Precipitation and weather pattern projections
- 320.6 River flow projections
- 320.7 Ocean acidification projections

Section 330. Ecological Impacts of Climate Change

- 330.1 Pelagic and Benthic Ecosystems
 - 330.1.1 Plankton bloom
 - 330.1.2 Stratification and mixing
 - 330.1.3 Marine fish and invertebrates
 - 330.1.4 Marine mammals
 - 330.1.5 Seabirds
 - 330.1.6 Sea turtles
- 330.2 Chemical Oceanography
 - 330.2.1 Ocean acidification
- 330.3 Emerging Issues
 - 330.3.1 Disease
 - 330.3.2 Invasive species

Section 340. Implications of Climate Change for Human Uses

- 340.1 Marine Transportation, Navigation, and Related Infrastructure
- 340.2 Recreation and Tourism
- 340.3 Renewable Energy
- 340.4 Historical and Cultural Assets
- 340.5 Fisheries Resources and Uses
- 340.6 Future Uses

Section 350. Climate Change Policy

- 350.1 Policies
- 350.2 Standards

Section 360. Literature Cited

List of Tables

- Table 1. Summary of Observed Climate Changes
- Table 2. Air Temperature Projections for the U.S. Northeast
- Table 3. Ocean Temperature Change Projections for U.S. Northeast, Late 21st Century
- Table 4. Precipitation and Weather Projections for U.S. Northeast
- Table 5. Marine Invasions coming from the South
- Table 6. Climate Change Impacts on Marine Transportation, Navigation and Infrastructure affecting the SAMP area
- Table 7. Climate Change Impacts on Recreation and Tourism affecting the SAMP area

List of Figures

- Figure 1. Annual Mean Temperature at the Official Weather Bureau Stations for Providence, RI, beginning from 1905 to 2006
- Figure 2. Mean Surface Water Temperatures during Dec, Jan, Feb in the Middle of West Passage of Narragansett Bay, RI, near Fox Island
- Figure 3. Observed Sea Level in Newport, RI from 1930 to 2008
- Figure 4. Total Annual Precipitation (Rain and Snow) at the Weather Stations in Providence, RI, from 1905 to 2006
- Figure 5. Annual Average Wind Speed at T.F. Green Airport, RI, from 1964 to 2006
- Figure 6. Observed Global CO₂ Emissions from Fossil Fuel Burning and Cement Production Compared with IPCC Emissions Scenarios
- Figure 7. Mean Values of Projected Surface Warming
- Figure 8. Projections of Future Global Sea Level Rise to 2300
- Figure 9. Projected Dynamic Sea Level Rise (Ten Year Running Mean) at Coastal Cities Worldwide under the Intermediate Emissions Scenario
- Figure 10. Observed and IPCC 2001 Estimated Global Sea Level Rise
- Figure 11. Observed and Model-based Winter Precipitation as a Percentage of Change in the U.S. Northeast
- ~~Figure 12. Ratio of Pelagic to Benthic Fish Species caught in Northeast Fishery Science Center Autumn Bottom Trawl Surveys~~
- Figure 12³. Complexity and Uncertainty of Linked Climate Change Impacts

Section 300

The Ocean SAMP in a Climate Change World

1. Ecologically, economically, and culturally, Rhode Island is inexorably linked to the ocean and therefore faces a number of challenges from climate change that are specific to the coastal and marine landscape.
2. The climate of the Ocean Special Area Management Plan (Ocean SAMP) area has changed over the past century. Overall, both air and sea temperature in the region have been getting warmer, sea level has been rising, it has become wetter, the severity of storms is increasing, and the acidity of the sea has increased.¹
3. Human activities since the start of the Industrial Age have caused a significant increase in greenhouse gases in the atmosphere. The most prevalent greenhouse gas in the atmosphere, in terms of anthropogenic emissions, carbon dioxide, has risen from a pre-industrial level of 280 parts per million (ppm) to 385 ppm in 2008, the highest it has been in 650,000 years. There is strong scientific consensus that carbon dioxide in the atmosphere warms the air and sea surface, makes the ocean more acidic, and causes shifts in precipitation and weather patterns, accelerated sea level rise, and more extreme weather events, among other effects. These effects are already being witnessed globally and in Rhode Island and are projected to intensify in years to come.
4. Future projections of climate change include sea water warming and possible changes to offshore ocean circulation patterns, stratification, nutrient distribution, and plankton productivity. These changes Alteration of these variables are expected to affect the ecological functioning of the Ocean SAMP region, create stress on marine plants and animals, shift geographic ranges of commercially important fish species northward, and change the timing of biological events. Other implication changes, such as accelerated sea level rise, more intense storms, sea surge, accelerated rates of coastal erosion and beach migration, more rain, salinity changes, runoff and salt water intrusion into fresh water aquifers, all have consequences implications for coastal infrastructure and recreation associated with the Ocean SAMP, marine navigation and transportation, and the offshore marine ecology.
5. Concern over the effects of current and future climate changes impacts up upon humans and the natural environment is being expressed at local and international levels. In Rhode Island, concern over climate change is one of the driving considerations behind the policy goal of 16 percent renewable energy in the state's electrical supply by 2019, and efforts to promote renewable energy (e.g. offshore wind energy) and energy efficiency.
6. Reducing greenhouse gas emissions, or "mitigation," is one of two proactive choices society can make to address climate change. Climate change mitigation is a human intervention to actively reduce the production of greenhouse gas emissions (e.g. through replacement of fossil fuels with renewable energy) or to remove the gases from the atmosphere (e.g. through planting additional vegetation on land and in water such as eel grass planting).

¹ What is presented here is a summary, references and support will come later in the text.

7. The other proactive choice that Rhode Island society can make is “adaptation.” Adaptation is an adjustment in human or natural systems to reduce harm from climate change impacts or exploit beneficial opportunities. Beyond these two choices, the only other option is to wait for climate changes to occur and react to them. Reactive adaptation is likely to be less efficient and result in lost opportunities. do nothing and face the consequences.
8. The Ocean SAMP is a tool for adaptive management, suited to address long-term and evolving phenomenon such as climate change. Among some of the notable potential impacts of current and future climate change are an accelerated rate of erosion and deterioration of the State’s recreational beaches, flooding damage and loss of coastal infrastructure associated with Ocean SAMP uses, fatigue and more severe damage to offshore installations and marine vessels, and the introduction of invasive species to the Ocean SAMP marine ecology. With advanced planning, the harm and costs associated with these potential impacts can be reducedmitigated and may be avoided.
9. This chapter looks at observed past climate-related trends across global and local scales, climate change projections in the future as suggested by existing peer-reviewedscientific studies and models, and examines what these climate change trends mean for the marine ecosystem of the Ocean SAMP area and human activities related to the Ocean SAMP. That there will be changes is unequivocal in the scientific community, which relies upon proven data from the past. Making projections into the future inherently includes uncertainty, however, provides information for planning, backed by the best available science, which gives managers and citizens a tool to be proactive. may have some uncertainty—as would any attempt to predict the future—but these projections are based upon the best science available, and data from monitoring and assessing historical changes. The goal of these impact assessments is to evaluate exposure of natural and human communities to changes in climate and link exposure to key processes that shape ecosystems. Assessing vulnerability helps to develop priorities when implementing actions (TNC 2010).
10. In other words, current assessment and informed analysis begins to “mainstream” climate change into the Ocean SAMP, recognizing that conditions will change and management must be adaptive in response. Mainstreaming means that climate concerns and adaptation responses are integrated into relevant policies and plans. This chapter only begins to overlay climate change on the Ocean SAMP. Assessing climate change vulnerabilities and defining adaptation goals and actions require an inclusive process over time.

Section 310

Climate Change Observed Trends: Global, US Northeast, Rhode Island

1. Overall, both air and sea temperature in the state, region and globally have been increasing, sea level has been rising, it has become wetter, the severity of storms is increasing, and the acidity of the sea has increased. A summary of observed and documented climate change trends described in this section at the global, regional and state levels is given in Table 1 below. Since there are little or no data for the Ocean SAMP area, this is generally for the state of Rhode Island and its offshore waters.

Table 1. Summary of Observed Climate Changes

Climate Change Variable	Geographic Scale	Observations of Recent Change
Air Temperature	Global	<ul style="list-style-type: none"> Global mean temperature has increased 0.74°C (1.33°F) over the last 100 years
	US Northeast	<ul style="list-style-type: none"> Since 1900 the annual mean temperature has risen 0.83°C (1.5°F)
	Rhode Island	<ul style="list-style-type: none"> Average annual temperature rose 0.94°C (1.7°F) from 1905 to 2006
Ocean Temperature	Global	<ul style="list-style-type: none"> The ocean has been warming consistently over the past 50 years, with 2007 as the warmest year on record
	US Northeast	<ul style="list-style-type: none"> Annual average temperatures in the waters off the southern New England coast have increased by about 1.2°C (2.2°F) since the 1970's
	Rhode Island	<ul style="list-style-type: none"> In Narragansett Bay, sea surfaces temperatures have risen 2.2°C (4°F) since the 1960s
Sea Level Rise	Global	<ul style="list-style-type: none"> Globally, sea levels rose in the 20th century at an average rate of 1.8 mm (0.07 in) per year, a rate greater than that of the preceding eight centuries Between 1993 and 2003 this rate almost doubled to 3.4 mm (0.13 in) per year
	Rhode Island	<ul style="list-style-type: none"> In Newport, sea level has risen an average of 2.6 mm (0.1 in) per year since 1930
Storminess	Global	<ul style="list-style-type: none"> The severity of tropical cyclones has increased since the 1970's
	US Northeast	<ul style="list-style-type: none"> The severity and (possibly) frequency of tropical cyclones in the North Atlantic has increased
Precipitation and Weather	Global	<ul style="list-style-type: none"> Rainfall has decreased in the Northern Hemisphere subtropics and increased in mid-latitudes over the last 50 years
	US Northeast	<ul style="list-style-type: none"> Studies have found a 5-17% increase in regional precipitation during roughly the last 100 years
	Rhode Island	<ul style="list-style-type: none"> Over the past 100 years, Rhode Island precipitation (rain and snow) has increased by 3 mm (0.12 in) per year Wind speed at T.F. Green Airport has significantly declined since at least the 1960's
Ocean Acidification	Global	<ul style="list-style-type: none"> Current pH o<u>i</u>n the surface <u>of the</u> ocean is 0.1 units lower than pre-industrial levels

Note: citations are provided in the text below

310.1 Air Temperature is Increasing

- Evidence shows that temperatures have been increasing locally and globally. The most recent report issued by the Intergovernmental Panel on Climate Change (IPCC 2007) states that the global average temperature has increased 0.74°C (1.33°F) over the last 100 years, with most of this increase during the last 50 years, and with the last decade (2000-2009) the warmest since instrumental records began in the mid 1800's (Allison et al. 2009).

2. Annual average temperature has increased similarly in Northeastern U.S. and Rhode Island. Since 1900 the annual ~~averagemean~~ temperature in the Northeastern U.S. has risen 0.83°C (1.5°F), with the majority of warming occurring in the past few decades (Frumhoff et al. 2007). Winter temperatures have risen even faster with a total increase of 2.22°C (4°F) between 1970 and 2000 (Frumhoff et al. 2007). In Rhode Island, National Weather Service data in Providence shows that the annual average temperature has risen 0.094°C (1.7°F) per decade from 1905 to 2006, and 1.14°C (2.5°F) between 1961 and 2005 (Figure 1) (Pilson 2008). ~~The temperature recording station was moved several times in the early 1900's within the Providence city limits, until it was located to the T.F. Green Airport in Warwick in 1953 where it has remained since.~~ Although lower temperatures might be expected outside of an urban area and near water, the trend line beginning around 1960 suggests a more rapid increase than that for the entire time series (1905-2006).

3. Increased air temperature increases sea surface temperature with numerous effects on marine ecology (see below). It also alters the timing of ~~seasonal summer and winter like~~ conditions, lengthening the amount of time with warmer temperatures and shortening the amount of time with freezing air temperatures. ~~This impact of climate change may be have some benefitseial for tourism and recreation, fishing, and other Ocean SAMP uses that are more easily conducted in warmer weather. Shorter, warmer winters and reduced icing on vessels' gear and structures ewould be beneficial to winter navigation and shipping.~~ In the long run, warming may also produce other global changes that will affect the Ocean SAMP area, positively and negatively. These include, among others, the melting of the Greenland ice sheet and Arctic sea ice, and collapse of Atlantic currents that would result in serious societal costs of coastal land and infrastructure loss and major changes to the marine environment. However, the probability and timing of these large-scale occurrences is currently uncertain. This impact of climate change may have some benefits for tourism and recreation, fishing, and other Ocean SAMP uses that are more easily conducted in warmer weather. Shorter, warmer winters and reduced icing on vessels' gear and structures could be beneficial to winter navigation and shipping.

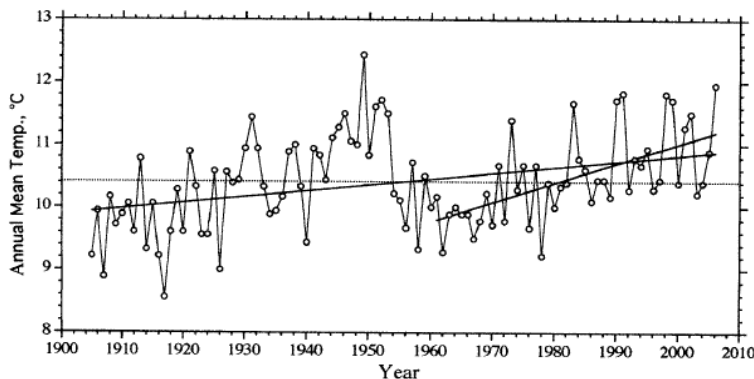


Figure 1. Annual Mean Temperature at the Official Weather Service Stations for Providence, RI, beginning from 1905 to 2006 (Source: Pilson 2008). The annual mean temperature from 1905 to 2006 is 10.41°C (18.74°F), with an increase of 0.094°C (0.17°F) per decade. From 1961 to 2006 the increase per decade was 0.31°C (0.56°). It

should be noted that the temperature recording station was moved several times in the early 1900's within the Providence city limits, until it was located to the T.F. Green Airport in Warwick in 1953 where it has remained since.

310.2 Ocean Temperature is Increasing

1. Globally, the ocean has been warming consistently over the past 50 years, with 2007 as the warmest year on record, and June, July, and August 2009 the warmest months recorded (Allison et al. 2009). The increase in oceanic heat content from 1963 to 2003 in the upper ocean (top 700 m/2300 ft) has been found to be 50% higher than previously estimated (IPCC 2007; Domingues et al. 2008; Allison et al. 2009).
2. For nearby waters of the New England coast (Woods Hole, Massachusetts and Narragansett Bay), Oviatt (2004) found that since the 1970's annual average temperaurestemperatures have increased by about 1.2°C (2.2°F). Nixon et al. (2004) estimated that coastal temperatures in Woods Hole have increased at an average rate of 0.04°C (0.07°F) per year from 1960 to 2002, amounting to a total increase of 1.7°C (3°F) during that time. Nixon et al. (2009) found significant variability in annual sea surface temperature in Narragansett Bay, but estimated that sea surface temperatures have risen 2.2°C (4°F) since the 1960s (Figure 2).

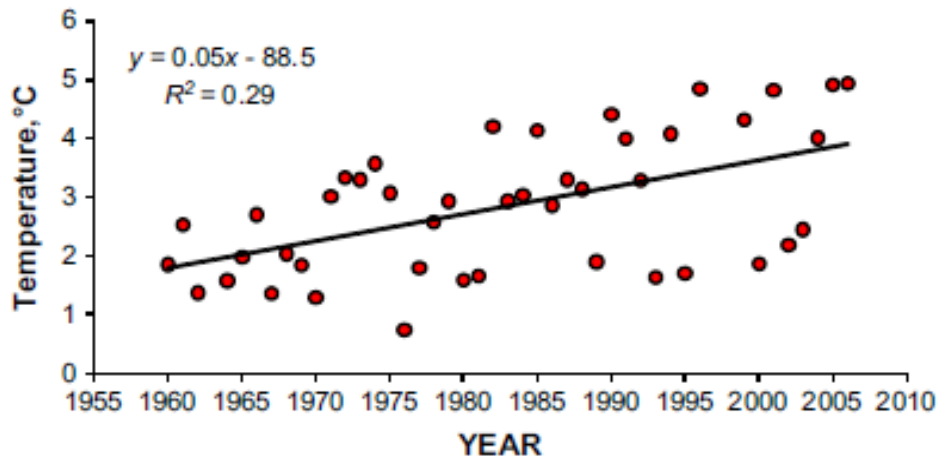


Figure 2. Mean Surface Water Temperatures during Dec, Jan, Feb in the Middle of the West Passage of Narragansett Bay, RI, near Fox Island. (Source: Nixon et al. 2009)

3. The marine environment, including the Ocean SAMP marine environment, is very sensitive to changes in sea surface temperature. Increasing sea surface temperature affects the distribution and reproductive success of plankton, fish and marine invertebrates, marine mammals, sea turtles, and seabirds. It is also partially responsible for Harmful Algal Blooms (HABs), marine diseases, and invasive species. The relationship of sea surface temperature with marine ecology is discussed in section 330 of this Chapter.

310.3 Sea Level is Rising at an Accelerated Rate

1. Sea level rise is caused by two effects. The first is the global warming effect, which is a combination of thermal expansion of seawater and increased volume of water from melting mountain glaciers and polar ice sheets. There is a lag in thermal response of the oceans. Therefore, thermal expansion can be expected to increase for hundreds of years due to current observations of increased temperature. The second effect is caused by land subsidence, or downward movement relative to sea level, due to the response of the earth's lithosphere from ice or sediment loading, or the extraction of water or oil. The contribution of land subsidence to sea level rise varies spatially at regional and local scales (NAS 2008).
2. There is evidence that the coastline from Cape Cod to New Jersey is subsiding (Frumhoff et al. 2007; Yin et al. 2009). The precise rate of subsidence is uncertain. When subsidence is taken into account, Rhode Island's historic rate of relative sea level rise as observed at Newport is thought to be greater than the global average (CRMC 2007).
3. Since changes in global temperature directly influence sea level, global warming brings with it increased sea level with rates accelerating as well. Globally, sea levels have risen at an average 17 cm (6.7 in) over the past century, a rate greater than that of the preceding eight centuries (IPCC 2007). Between 1961 and 2003, global sea level rose at an average rate of 1.8 mm (0.07 in) per year (IPCC 2007). Between 1993 and 2003 this rate almost doubled to 3.4 mm (0.13 in) per year (Allison et al. 2009). These rates are equivalent to sea level rise of 18 cm (7 in) and 34 cm (13 in) per century, respectively.
4. The accelerated rate is likely due to loss of polar ice in Greenland and Antarctica and the addition of melt water in the sea (IPCC 2007; Cazenave et al. 2009) with Greenland polar melt water the primary cause of accelerated sea level rise. The current rate of sea level rise is 80% faster than what was projected for this time period by the IPCC Third Assessment Report (2001) (Allison et al. 2009).
5. Newport, RI, tide gauge data is available for 1930-2008. During this time sea level has risen 2.58 mm (0.10 in) per year. If this rate of sea level rise over this period is extrapolated for a century (1908-2008), then sea level has risen 25.8 cm (10.2 in) ~~in the last~~ century (Figure 3).
6. The primary concern with sea level rise in the Ocean SAMP area is erosion, flooding and loss of coastal habitat, beaches, and private and public land and infrastructure utility with uses associated with the offshore Ocean SAMP. Sea level rise will reduce the effectiveness and decrease the life of existing coastal structures such as seawalls and revetments, docks, roads, and bridges. The adverse effects of sea level rise on infrastructure, recreation and tourism are discussed in more detail in section 340 of this Chapter.

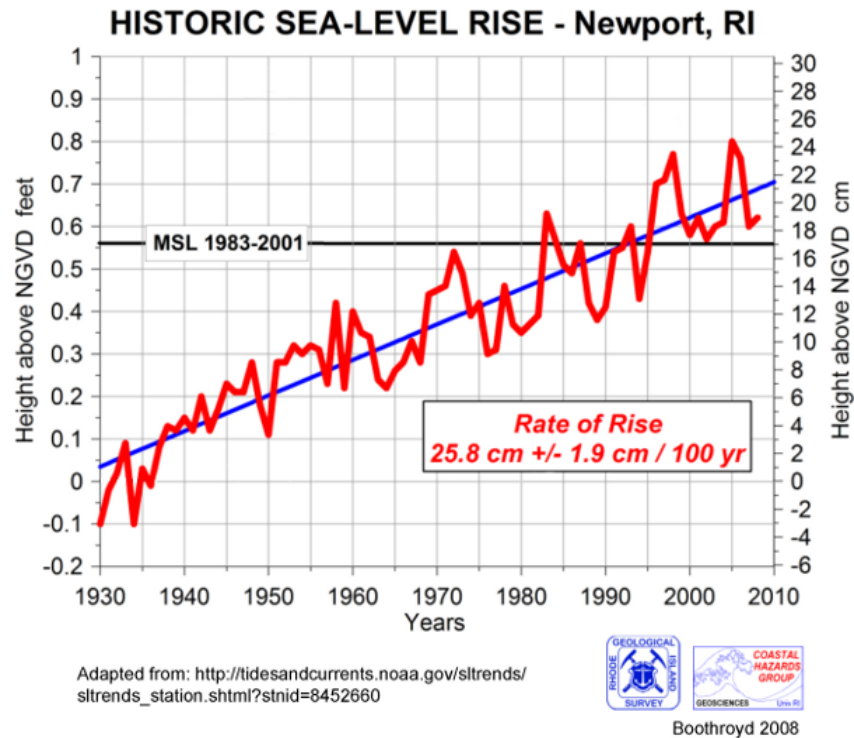


Figure 3. Observed Sea Level in Newport, RI from 1930 to 2008. Sea level data (collected by the National Oceanic and Atmospheric Administration from the Newport, RI, tide gauge) are measured relative to the National Geodetic Vertical Datum of 1929 (NGVD 29) —for mean sea level (MSL). NGVD 29 is a vertical control point historically used for measuring elevations, including baseline for vertical surveying and measures the absolute change in sea-level (incorporating both global and local dynamics) at the site, rather than relative to the adjacent coast. The rate of sea level rise is 25.8 cm (10.16 in) per 100 years. (Figure courtesy of J. Boothroyd, The University of Rhode Island). These data are available on line and continuously updated at: http://co-ops.nos.noaa.gov/sltrends/sltrends_station.shtml?stnid=8452660%20Newport,%20RI (NOAA/NOS 2008a).

310.4 Storminess is Increasing

1. The IPCC Fourth Assessment Report found a substantial increase in the severity of global tropical cyclones (hurricanes and typhoons) since the 1970's, with a strong link to the observed increase in ocean surface temperatures (IPCC 2007). There is evidence that storm intensity has increased in the North Atlantic in the last 30 years (Emanuel 2005; Webster et al. 2005; Emanuel et al. 2008; Holland 2009; Mann et al. 2009) and this correlates well with variations in tropical Atlantic sea surface temperature (Mann and Emanuel 2006; Holland and Webster 2007). Yin (2005) found that major storm tracks have been moving northward and attributed this to changing climate. Some studies have reported an increase in the number of tropical cyclones in certain areas, including, the North Atlantic (e.g. Hoyos et al. 2006; Mann and Emanuel 2006; Emanuel et al. 2008; Holland 2009; Mann et al. 2009).
2. Whether the characteristics of tropical cyclones have changed has been the subject of considerable investigation, often with conflicting results (Allison et al. 2009). Large

amplitude fluctuations in the frequency and intensity of tropical cyclones greatly complicate both the detection of long-term trends and their attribution to rising levels of atmospheric greenhouse gases. Trend detection is further impeded by substantial limitations in the availability and quality of global historical records of tropical cyclones. Therefore, it remains still uncertain whether past changes in tropical cyclone activity have exceeded the variability expected from natural causes.

- ~~2. Some studies have reported an increase in the number of tropical cyclones in certain areas, including, the North Atlantic (e.g. Hoyos 2006; Mann and Emanuel 2006; Emanuel et al. 2008; Holland 2009; Mann et al. 2009). These conclusions remain debatable within the scientific community (Allison et al. 2009).~~
3. Rhode Island has been impacted by a number of major storms and they represent a major coastal and marine hazard. In terms of wave height and storm surge, the Hurricane of 1938 was of the magnitude of the 100-year storm of record for Rhode Island (RIEMA-Pogue 2005). This means that there is a 1 percent probability of this size storm occurring in any single year. However, with more intense storms, the probability increases that any one storm will be greater than that as intense a storm as currently defined as a 100-year storm.
4. Storms and associated storm surge cause damage to ports, seawalls and revetments, docks, roads, bridges, wastewater treatment plants and stormwater infrastructure. Storms can also damage wind turbines and other offshore infrastructure and affect sediment movement, altering eroding beaches and coastal habitats as well as needs for dredging marine transportation and port operations. Potential damage from increasing storm intensity and past damage to the ports of Providence and East Providence are described in more detail in section 340 of this Chapter. ~~Storms also erode beaches and coastal habitats, affect sediment movement creating anoxic conditions and can affect needs for and dredging needs for, marine transportation and port operations.~~

310.5 Precipitation and Weather Patterns are Changing

1. Globally, rainfall has decreased in the Northern Hemisphere subtropics and increased in mid-latitudes over the last 50 years (Zhang et al. 2007). Rainfall and wind patterns have also been changing over time in the U.S. Northeast and coastal New England. Frumhoff et al. (2007) reported that since 1900 precipitation has increased 5-10% in the northeastern US, with most of the increase historically occurring during fall, spring, and summer. In the last few decades, however, increases have also occurred in winter. However, more of this precipitation is falling as rain than snow. The New England Regional Assessment estimated a larger, 16.8% increase in precipitation between 1905 and 2006 in coastal New England (NERAG 2001).
2. Between 1905 and 2006 there has been a 32% increase in precipitation (rain and snow) in Rhode Island when all years, even extremely dry and wet years, are included (Figure 4) (Pilson 2008). This estimate is comparable to the New England Regional Assessment data if extremely dry and wet years are excluded (Pilson 2008). The increase in precipitation, as well as warmer winter temperatures, is related to the observed increase in cloudiness, which results in a decreasing amount of sunlight reaching Rhode Island (Nixon et al. 2009).

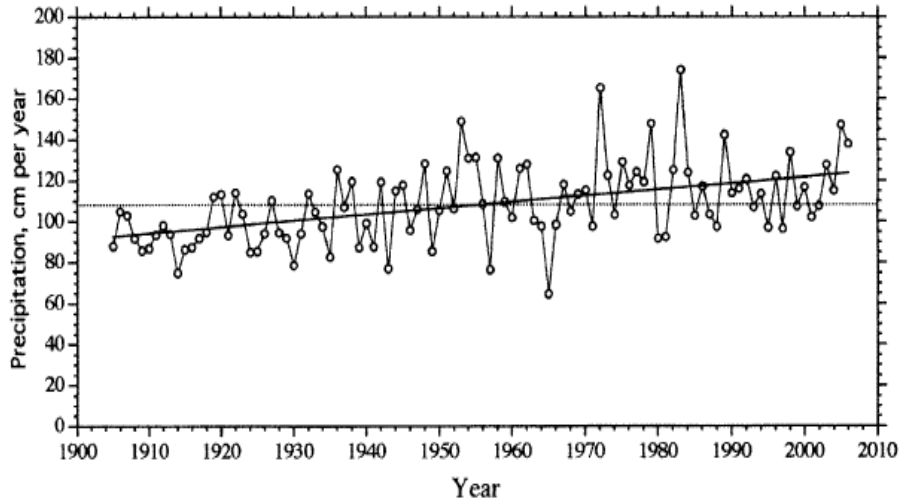


Figure 4. Total Annual Precipitation (Rain and Snow) at the Weather Stations in Providence, RI, from 1905 to 2006. The rate of increase (slope of the simple linear regression) is 3.05 mm (0.12 in) per year. (Source: Pilson 2008).

3. In contrast to precipitation, average winter and summer wind speeds over land across New England have declined by 20% in the last 50 years (O’Donnel, in press). Other data also show a decline in annual mean wind speed in the northeastern U.S. (Pryor et al. 2008). For example, Figure 5 shows that wind speed recorded at T.F. Green Airport in Rhode Island has significantly declined from 1964 to 2004 (Pilson 2008).

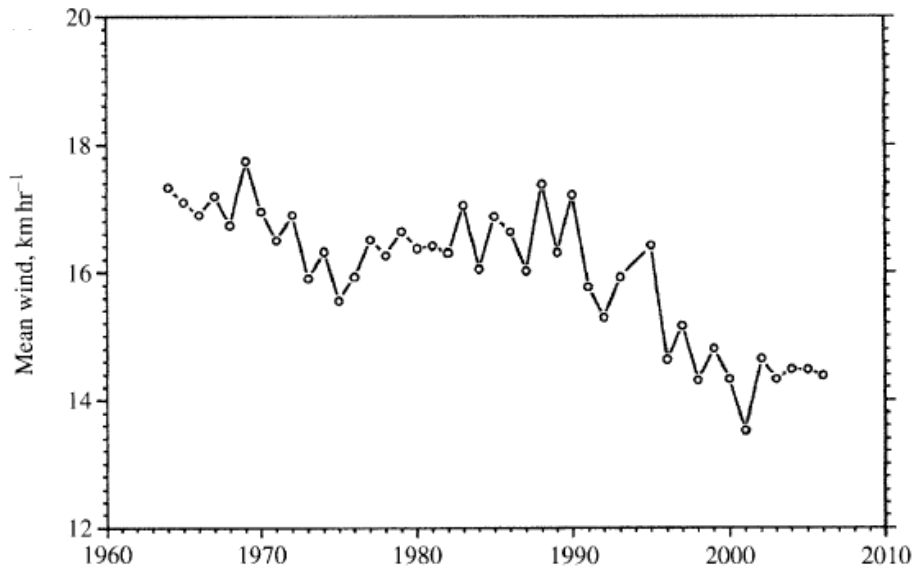


Figure 5. Annual Average Wind Speed at T.F. Green Airport, RI, from 1964 to 2006 (Source: Pilson 2008).

4. Increased precipitation matters to the Ocean SAMP because it increases river flow and transports pollutants and nutrients to coastal waters, which adversely affects ecology, coastal habitat-, wildlife, and recreation and tourism associated uses of the Ocean SAMP area unless

it is treated. Some of the river flow to the marine environment enters Block Island Sound and Rhode Island Sound, altering salinity (critical to marine productivity) and transporting contaminants and nutrients. Decreasing wind speeds are of concern to the Ocean SAMP with respect to impacts upon mixing and stratification. ~~as well as the potential for future uses including wind energy.~~

5. The North Atlantic Oscillation (NAO) influences regional climate patterns of temperature, precipitation and winds in the North Atlantic due to the interaction of the Icelandic Low and Azores High pressure atmospheric cells. The principal winter weather effect of the NAO is on the jet stream which determines primary seasonal storm tracks. In positive years storms track straighter west-to-east and in negative years, storm tracks are deeply meandering. The NAO has a known effect on seas surface temperature through atmospheric wind-stress changes which is associated with differences changes in sea water densities from different sources and can therefore affect ~~ed~~ thermohaline-ocean circulation (Delworth and Dixon 2000).
6. In addition, the Atlantic Multidecadal Oscillation (AMO) is an ocean fluctuation that also significantly influences weather patterns in the North Atlantic through an meridional-ocean heat flux and involves ocean-atmosphere coupling-interaction as well as variability in the strength of ~~the thermohaline~~-circulation (Knight et al. 2005; Delworth and Mann 2000). Hubney et al (2006) found evidence of a coupling between the atmosphere and ocean at multidecadal times scales based on photosynthetic estuarine pigments over the last millennium adjacent to Narragansett Bay, which suggests that the AMO could be attributed to changes in the atmosphere and the NAO is affected by solar variability.
7. Since 1972, the NAO has been primarily positive with notable short-term negative periods (Delworth and Dixon 2000; Hurrell 1995). Based on climate reconstructions using historicpaleoclimate data, the current trend appears to be unprecedented in both recorded time and the past several centuries (Hurrell 1995; Watanabe and Nitta 1999). The positive NAO index causes the Icelandic low pressure system to draw a stronger south-westerly circulation over the North American continent in the east, preventing Arctic air from meandering southward and resulting in less severe winters over eastern Canada and the northwest Atlantic (Thompson and Wallace 1998).

310.6 Ocean Acidification is Occurring

1. In addition to the heat trapping effect of carbon dioxide, as concentrations increase in the atmosphere more carbon dioxide is absorbed by the oceans, resulting in the lowering of seawater pH levels (reduced alkalinity). The increased acidity is due to the formation of carbonic acid as CO₂ dissolves in seawater.
2. Roughly one-half of the carbon emitted from human activities between 1800 and 1994 has been absorbed by the ocean (Sabine et al. 2004), and one-third of modern emissions is being currently absorbed (Feely et al. 2004; Canadell et al. 2007 in UNEP 2009; Cooley and Doney 2009; USGCRP 2009). As a result, globally averaged marine surface atmospheric CO₂ has increased 13.2% since 1981 (NEFSC 2009). This has resulted in a reduction of surface ocean

seawater pH levels by 0.1 pH units (USGCRP 2009). Because pH units are expressed on a logarithmic scale, a change from one unit (e.g. from 8.0 to 7.0) represents a 10-fold change, and two units (e.g. 8.0 to 6.0) is a 100-fold change.

3. Broad-scale time series of ocean pH measurements are not currently available to assess the effects of ocean acidification in the Northeast continental shelf region (NEFSC 2009). However, ~~correlation agreement~~ between atmospheric CO₂ and dissolved CO₂ in ocean waters is ~~evident good~~ in regions where estimates of both are available (NEFSC 2009).
4. Acidification is a concern for marine animals that have shells or skeletons made of calcium carbonate (such as ~~corals~~, quahogs, foraminifera, slipper shell snails, ~~and~~ sea stars, ~~and coral~~), many that are valuable to the food chain, and for corrosion of metals on vessels and infrastructure associated with marine transportation, navigation, ports and harbors. Increased acidification may also cause more rapid deterioration of historic and cultural assets on the seafloor (such as wrecks). The potential impacts ~~effects~~ of acidification are discussed in more detail in sections 330 and 340 in this Chapter.

Section 320

Future Climate Change Projections

1. Human activities have caused a significant increase in greenhouse gases in the atmosphere. The most prevalent greenhouse gas in the atmosphere, carbon dioxide, has risen from a pre-industrial level of 280 ppm to 385 ppm in 2005, the highest it has been in 650,000 years (IPCC 2007; Allison et al. 2009). The Inter-governmental Panel on Climate Change (IPCC) in its last report (IPCC 2007) and peer-reviewed science updates since then (Allison et al. 2009; UNEP 2009; USGCRP 2009) conclude this increase in carbon dioxide and other greenhouse gases is unprecedented, and driving climate change today and will continue to do so long into the future.
2. Since climate change and associated impacts are long term and not necessarily linear phenomena, and since positive feedback loops can increase impact, ~~an important part of modeling is essential for climate change science is~~ projecting into the future based on assumptions of future greenhouse gas emissions and atmospheric concentrations of greenhouse gases. Since the climate change landscape will continue to change into the future, adaptive planning and management for climate change in the Ocean SAMP region needs to be cognizant now of projected future change.²
3. This section describes possible future changes as “projections” rather than “predictions”. As defined by the IPCC, “climate predictions are the result of an attempt to produce an estimate of the actual evolution of the climate in the future. Since the future evolution of the climate system may be highly sensitive to initial conditions, such predictions are usually probabilistic in nature” (Baede n.d.). In contrast, climate projections are not based on an estimate of the actual evolution of climate, but rather are based on emissions scenarios (lower, intermediate and higher emissions scenarios). As defined by the IPCC, “climate projection is a projection of the response of the climate system to emission or concentration scenarios of greenhouse gases and aerosols, or radiative forcing scenarios, often based upon simulations by climate models” (Baede n.d.). Scenarios help move dialogue from a debate about exactly how the climate will change to the implications of the different scenarios of low to high degrees of change.
4. In the late 1990’s carbon dioxide emissions scenarios were developed by the IPCC, as outlined in the Special Report on Emissions Scenarios (SRES) in the IPCC Third Assessment Report (Nakicenovic et al. 2000). The SRES scenarios assumed varying degrees of reductions in CO₂ emissions and are based on five global models. The low emissions scenario (B1) assumes that reductions in CO₂ emissions would occur with resource efficient technologies. CO₂ concentrations in the atmosphere would reach 550 ppm by 2100 (about twice the pre-industrial level). The high emissions scenario (A1FI) assumes an increase in CO₂ emissions due to fossil fuel-intensive economic growth. CO₂ concentrations in the atmosphere would reach 940 ppm by 2100 (about three times the pre-industrial level). Since

² Note that even if greenhouse gases were capped today, air and sea temperatures will continue to rise as a result of past emissions—as greenhouse gases in the atmosphere have a lifetime of between 10 and several thousand years (Solomon et al. 2009; UNEP 2009).

the scenarios were developed a decade ago, actual experience has shown that the rate of emissions has exceeded the high emissions scenario as a result of growing populations, per capita gross domestic product, and reliance on fossil fuels (Figure 6) (Raupach et al. 2007; Allison et al. 2009; UNEP 2009). To date there are no regions that are substantially decreasing carbon in their energy supply (Raupach et al. 2007; UNEP 2009). In light of this, projections of climate change impacts under a low emissions scenario are becoming less likely as high rates of CO₂ emissions continue. It is important that decision-makers seriously consider and plan for impacts under a high emissions scenario.

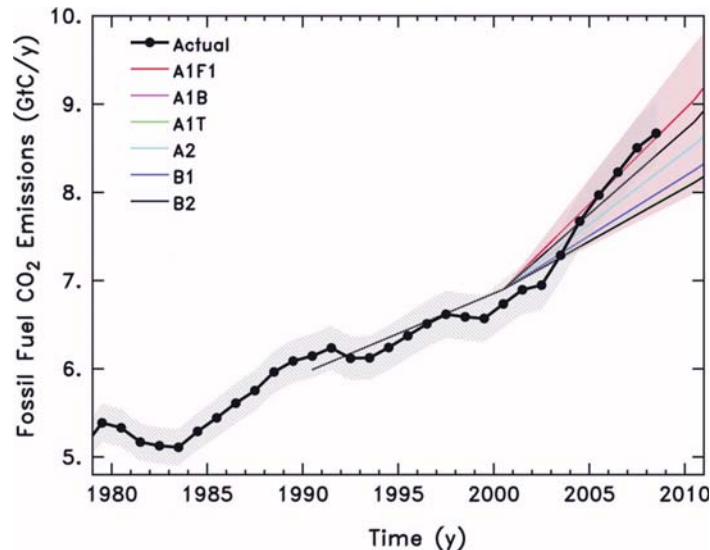


Figure 6. Observed Global CO₂ Emissions from Fossil Fuel Burning and Cement Production Compared with IPCC Emissions Scenarios (Le Quéré et al. 2009). The shaded area covers all scenarios used to project climate change by the IPCC. Actual emissions began following tracking the high emissions scenario in 2006, implying that we are on track with the high emissions scenario. A1FI is high emissions scenario; B1 is low emissions scenario. (Source: Allison et al. 2009)

5. Where available, this section presents projections for the low and high emissions scenarios with the widely used temporal benchmarks of mid-century and late-century (21st century). In some cases, only end of century projections are found in the literature. The projections are global or regional. The grid scale of climate change models is approximately 2 degrees longitude-latitude, too coarse for Ocean SAMP scale projections.
6. With accelerating greenhouse gas emissions, changes in global climate trends have occurred faster than predicted, with no indication of a slow-down or pause and future changes could be more severe and arise more quickly than predicted (Allison et al. 2009). An example of such a positive feedback loop affecting climate change is the release of methane from the permafrost areas leading to increased greenhouse gas emissions from increased methane due to melting ice and causing further subsequent warming. Scientists warn that current and continuing climate change may lead to permanent and irreversible changes in natural systems. These are referred to as “tipping points” in which a critical threshold is reached

where the state of a system is altered (Lenton et al. 2008; Schellnhuber 2009). There are a number of tipping points in the climate system, based on its current non-linear dynamics, and as revealed by past abrupt climate changes and climate models (Schellnhuber 2009). Among the tipping points are the complete disappearance of Arctic sea ice in summer, leading to drastic changes in ocean circulation and climate patterns across the whole Northern Hemisphere; acceleration of ice loss from the Greenland and Antarctic ice sheets, driving rates of sea level rise to 6 feet or more per century; collapse of the Atlantic thermohaline circulation; and, ocean acidification from carbon dioxide absorption, causing massive disruption in ocean food webs (NRC 2002; Lenton et al. 2008; Overpeck and Weiss 2009).

320.1 Air Temperature Projections

1. Projections of greenhouse gas emission under low and high scenarios estimate global mean temperatures warming 2-7°C (3.6-12.6°F) by the end of the century (Figure 7) (Allison et al. 2009; Richardson et al. 2009). This range surpasses the estimated threshold range of 1-3°C (1.8-5.4°F) increases for dangerous climate tipping-points, such as the melting of summer Arctic sea-ice, Himalayan glaciers and the Greenland ice sheet (Ramanathan and Feng 2008 in UNEP 2009). An increase above 2°C (3.6°F) is cited as being a threshold beyond which the consequences from global warming will cause severe environmental and societal disruptions worldwide (Richardson et al. 2009).

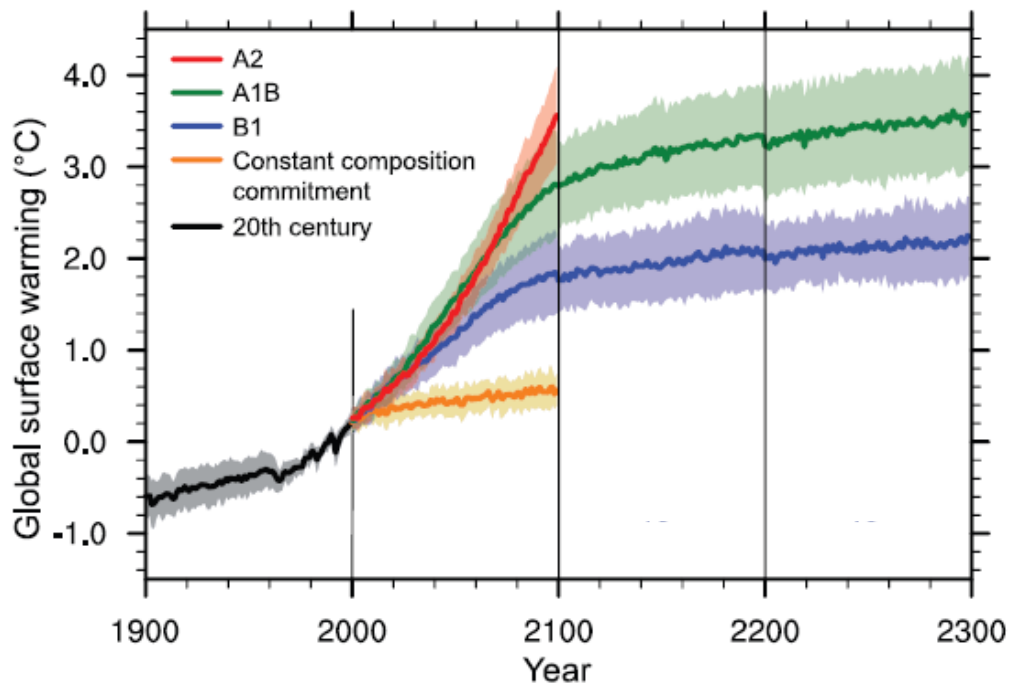


Figure 7. Mean Values of Projected Surface Warming (compared to the 1980–1999 base period) for the Special Report on Emissions Scenarios (SRES) scenarios A2 (red – higher emissions), A1B (green – intermediate emissions) and B1 (blue – lower emissions). Projections when emissions are kept constant from 2000 levels are shown (orange). Lines show the multi-model means, shading denotes the ± 1 standard deviation range (Source: IPCC 2007).

2. Temperature changes are also projected regionally. The late century projections for the U.S. Northeast are similar to global projections, but have a wider range when one looks at summer vs. winter change (See Table 2). The range for low to high emissions scenarios is from ~~23~~²³°F to 14°F (1.~~15~~¹⁵°C to 7.8°C) (Frumhoff et al. 2007).

Table 2. Air Temperature Projection Increases for the U.S. Northeast

Season	Low emissions scenario (B1)	High emissions scenario (A1FI)
2050 Projection		
Summer	1.1-2.8°C (2-5°F) <u>1.1-2.8°C (2-5°F)</u>	2.2-4.4°C (4-8°F) <u>2.2-4.4°C (4-8°F)</u>
Winter	2.2-2.8°C (4-5°F) <u>2.2-2.8°C (4-5°F)</u>	2.2-3.9°C (4-7°F) <u>2.2-3.9°C (4-7°F)</u>
2100 Projection		
Summer	1.5-3.9°C (3-7°F) <u>1.5-3.9°C (3-7°F)</u>	3.3-7.8°C (6-14°F) <u>3.3-7.8°C (6-14°F)</u>
Winter	2.8-4.4°C (5-8°F) <u>2.8-4.4°C (5-8°F)</u>	4.4-6.7°C (8-12°F) <u>4.4-6.7°C (8-12°F)</u>

Source: (Frumhoff et al. 2007)

320.2 Ocean Temperature Projections

1. By late century, sea surface temperatures in the U.S. Northeast are expected to increase by 2.2-2.8°C (4-5°F) or 3.3-4.4°C (6-8°F) under the low or high emissions scenario, respectively, though these increases vary for the different portions of the Northeast continental shelf (Table 3) (Frumhoff et al. 2007).
2. By late century, regional bottom temperatures in the northern Mid-Atlantic Bight are expected to increase 1.1°C (2°F) or 2.8-3.9°C (5-7°F) from the historic average (1970-2000), under the low or high emissions scenario, respectively. On Georges Bank, increases of 1.1°C (2°F) or 3.3°C (6°F) are expected, depending on emissions scenario (Frumhoff et al. 2007).

Table 3. Ocean Temperature Change Projections for U.S. Northeast, -2100Late 21st Century

Ocean Depth	Lower emissions scenario (B1)	Higher emissions scenario (A1FI)
Sea surface	2.2-2.8°C (4-5°F) <u>2.2-2.8°C (4-5°F)</u>	3.3-4.4°C (6-8°F) <u>3.3-4.4°C (6-8°F)</u>
Bottom temperatures	1.1°C 2°F <u>1.1°C 2°F</u>	2.8-3.9°C (5-7°F) <u>2.8-3.9°C (5-7°F)</u>

Source: (Frumhoff et al. 2007)

320.3 Sea Level Rise and Flooding Projections

1. A great amount of variability in sea level rise projections exists because of uncertainty of the contribution of melting sheet ice. Many analyses, including those in the Fourth Assessment by the IPCC do not account for the unexpected rates of rapid sheet ice breakup and melting that have occurred in recent years (Frumhoff et al. 2007; Allison et al. 2009). The contribution of the ice sheets to sea level rise was not included in the IPCC report because no IPCC consensus on ice sheet dynamics could be reached based on published literature at that time (Solomon et al. 2009; UNEP 2009). Increasingly, evidence is being presented in peer-reviewed literature indicating that this is a concern.
2. There is an unknown threshold beyond which a collapse of the polar ice sheets, especially Greenland's, will be inevitable and irreversible, which would add an additional several meters of sea level rise within the next millennium. This risk is growing, particularly under a

high emissions scenario (Frumhoff et al. 2007; Solomon et al. 2009). This is one of the “tipping points” described earlier.

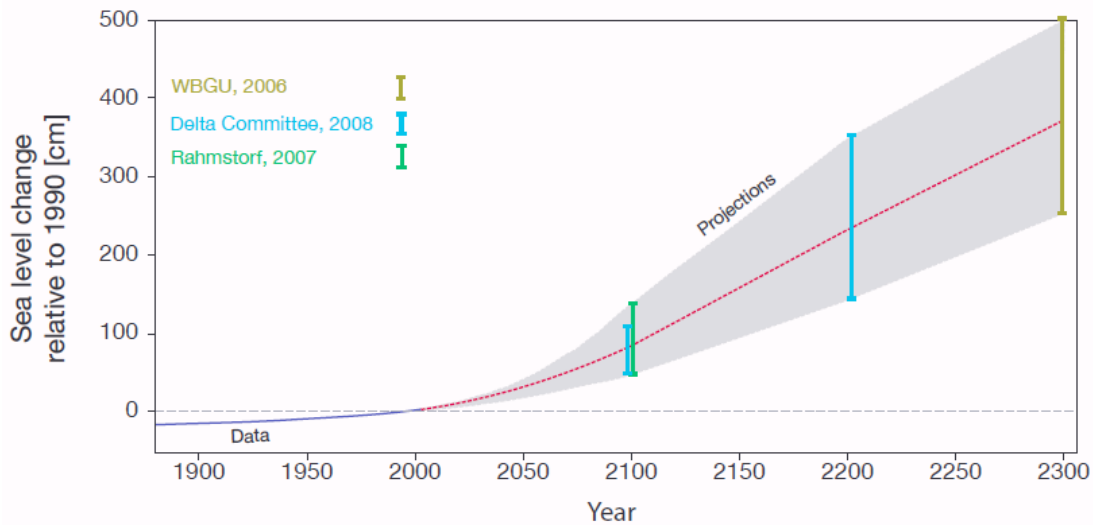


Figure 8. Projections of Future Global Sea Level Rise to 2300. Historical data from Church and White (2006). Future projections are from Schubert (2006) (represented as ‘WGBU’), Rahmstorf (2007), and Vellinga et al. (2008) (represented as ‘Delta Committee’). (Source: Allison et al. 2009)

3. Updated estimates of future global mean sea level rise are twice as large as the IPCC 2007 projections of 18-59 cm (0.6–1.9 ft) for end of the century. New estimates of the increase in global sea level by the end of the century range from 0.5 to 2 m (1.6–6.6 ft) (Rahmstorf et al. 2007; Horton et al. 2008; Pfeffer et al. 2008; Allison et al. 2009; Richardson et al. 2009). These updated projections incorporate new observations of accelerated loss of mass from glaciers, ice caps and the Greenland and Antarctic ice sheets.
4. Changes in the salinity and temperature of the ocean in the Arctic and North Atlantic will likely (90% probability) cause a slow-down of ~~thermohaline-ocean~~ circulation in the North Atlantic by the year 2100, which among other effects, will lead to a more rapid rise in sea level along the northeastern U.S. coastline compared to other parts of the world (Figure 9) (IPCC 2007; Yin et al. 2009).

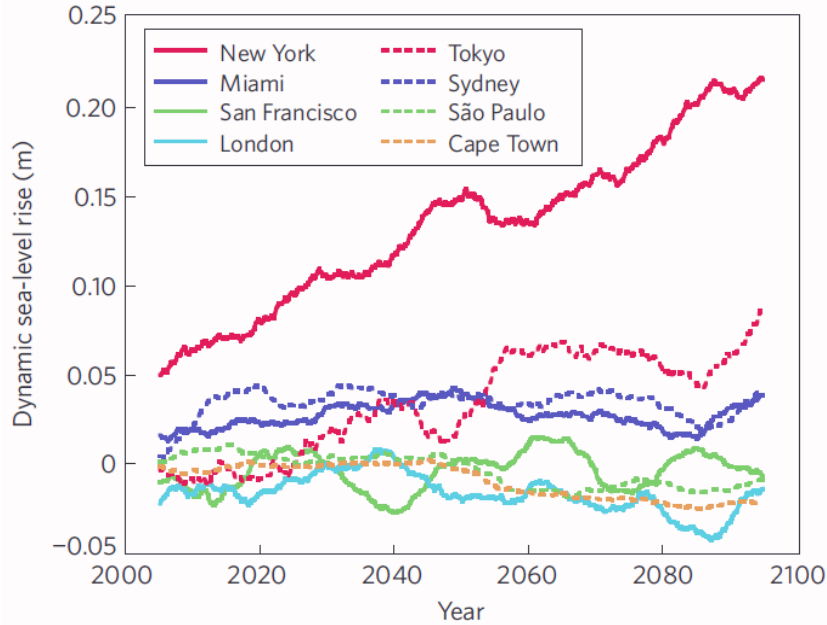


Figure 9. Projected Dynamic Sea Level Rise (Ten Year Running Mean) at Coastal Cities Worldwide Under the Intermediate Emissions Scenario. These projections account for the amount sea level rise caused by changes in large scale ocean currents alone and not other factors such as thermal expansion and ice sheet melting. (Source: Yin et al. 2009)

5. The Northeast Climate Impacts Assessment in 2006 projected increases in sea level of 6-33 cm (2.5-13 in) by mid-century (under either emissions scenario), and 10-53 cm (4-21 in) under the lower-emissions scenario and 20-84 cm (8-33 in) under the higher-emissions scenario by late-century (Figure 10) (NECIA 2006). The assessment report indicates that these projections do not incorporate the recently observed high rates of continental ice melt, and should be considered to be at the lower range of possible future sea level rise.

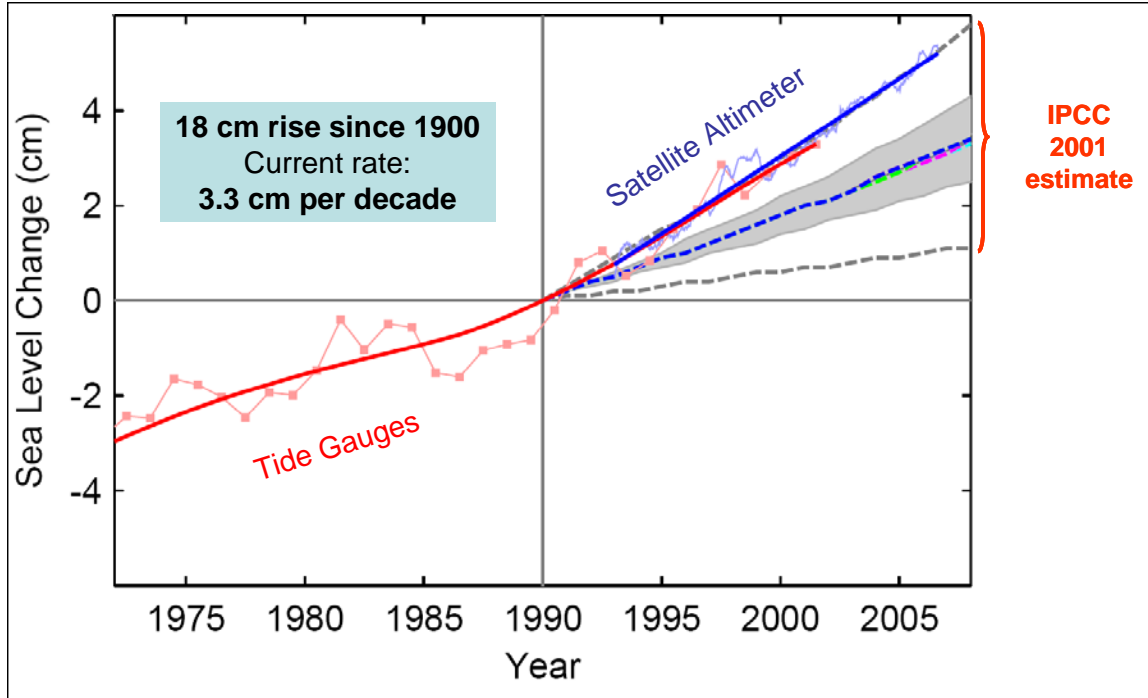


Figure 10. Observed and IPCC 2001 Estimated Global Sea Level Rise This figure illustrates the range of IPCC scenarios as of 2001 projections. Observations illustrate that sea level is rising at a rate slightly above the highest IPCC scenario (A1FI) from 2001 (Figure from Rhamstorf et al. 2007).

320.4 Storminess Projections

~~An observed increase in the strength of tropical cyclones and North Atlantic storms during the past few decades is linked to rising ocean temperatures. Climate models are not yet able to give robust projections of future storm activity. Nevertheless, some studies conclude that a further increase in global storm intensity is likely (Allison et al. 2009). Bender et al. (2010) predicted a near doubling of the global frequency of category 4 and 5 hurricanes by 2100, with the largest increase projected for the western Atlantic north of 20°N. According to the National Weather Service, high hurricane activity occurs during periods of warmer tropical Atlantic sea surface temperature. Given current and historical trends of sea surface temperature, it is likely that there will be above-normal Atlantic hurricane activity over the next several years.~~

1. An observed increase in the strength of tropical cyclones and North Atlantic storms during the past few decades is linked to rising ocean temperatures. Future projections based on theory and high-resolution dynamical models consistently indicate that greenhouse warming will cause the globally averaged intensity of tropical cyclones to shift towards stronger storms, with intensity increases of 2-11% by 2100 (Knutson et al. 2010). Existing modeling studies also consistently project decreases in the globally averaged frequency of hurricanes, by 6-34%. Balanced against this, higher resolution modeling studies typically project substantial increases in the frequency of the most intense cyclones, and increases of the order of 20% in the precipitation rate within 100 km of the storm center.

2. Most climate models are incapable of reproducing the strongest hurricanes (category 3 or higher). In a recent study Bender et al. (2010) used a downscaling approach to model tropical cyclone activity through the end of the 21st century. They began by creating an average climate change projection based on 18 global climate models, and then fed this projection into a regional model with much higher resolution to simulate entire hurricane seasons. Finally, they used NOAA-GFDL's operational hurricane prediction model to re-simulate each storm generated by the regional model--but at a still higher resolution--so that the very intense (category 4 and 5) hurricanes could be simulated. These results are based on projections of a substantial warming of the tropical Atlantic hurricane regions over the 21st century due to an increase in greenhouse gases. The projections used ~~on~~ a standard future emission scenario from the Intergovernmental Panel on Climate Change (IPCC). The models showed a decrease in the total number of hurricanes by the end of this century, yet still produced nearly a doubling of category 4 and 5 hurricanes. The largest increase in intense hurricanes was seen in the Western Atlantic region (between 20°N and 40°N). Category 4 and 5 hurricanes making landfall account for approximately 48% of all hurricane damage in the U.S., despite accounting for only 6% of the total number of hurricanes that make landfall. Bender et al. (2010) estimate about a 30% increase in potential damage from the combined effect of fewer hurricanes overall and more very intense hurricanes.
3. According to the National Weather Service, high hurricane activity occurs during periods of warmer tropical Atlantic sea surface temperature. Given current and historical trends of sea surface temperature, it is likely that there will be above-normal Atlantic hurricane activity over the next several years.
- 2.4. A small increase in frequency of nor'easters is projected for the U.S. Northeast (Frumhoff et al. 2007). Currently 12-15 nor'easters (extra-tropical storms) hit the U.S. Northeast in the months of November to March. It is estimated that under a high emissions scenario, one additional nor'easter could affect the Northeast coast each winter by late century. Nor'easters drive destructive waves and currents, and transport sediment along the coastlines resulting in beach and bluff erosion and sediment re-suspension offshore. Movement of sediment could have adverse impacts on planktonic organisms and navigation.

320.5 Precipitation and Weather Pattern Projections

1. Climate change is projected to change the intensity and timing of annual precipitation in rain and snow in the U.S. Northeast, and the timing and length of seasons. By end of the century, under either the low or high emissions scenario, annual precipitation is projected to increase ~10% (4 in/10 cm per year). Winter precipitation could increase an average of 20-30%, depending on the emission scenario, with a greater proportion falling as rain rather than snow (Figure 11) (NECIA 2006). Little change is expected for summer rainfall, but projections are variable (Frumhoff et al. 2007).

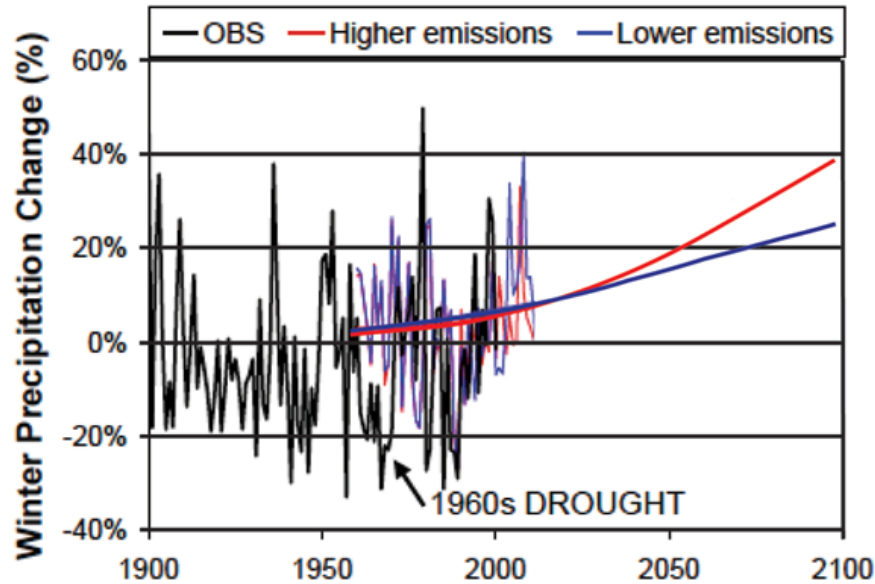


Figure 11. Observed and Model-based Winter Precipitation as a Percentage of Change in the U.S. Northeast. The black line depicts average historical precipitation patterns from 1900-2000. The red line represents the predicted change in precipitation under the higher emissions scenario. The blue line represents precipitation changes under the low emissions scenario. The largest increase in precipitation is expected after 2050, particularly in the high emissions scenario. (Source: NECIA 2006)

2. In the Northeast, precipitation intensity (the amount of rain that falls on rain days) is projected to increase 8-9% by mid-century and 10-15% by late-century. In other words, wet days will become wetter (Table 4). The frequency of heavy-precipitation events is projected to increase by 8% by mid-century and 12-13% by late-century. Extreme precipitation events are defined as those with a larger precipitation total for one day than the smallest maximum annual precipitation event for each of the previous 59 years, the length of record assessed for this study (Madsen and Figdor 2007).—These projections suggest that more of the annual rainfall total will come in heavy rainfall events. During the wettest 5-day period of the year, 10% and 20% more rain will fall by mid- and late-century, respectively (Frumhoff et al. 2007).
3. Short and medium-term droughts (1-3 months and 3-6 months, respectively) are projected to increase slightly under lower emissions scenario and dramatically under higher emissions scenario by late century. Short-term droughts are projected to occur as frequently as once each summer under the higher emissions scenario in the New England states by late-century (Frumhoff et al. 2007; USGCRP 2009).
4. By mid century, summer-like conditions are projected to persist 16 or 27 days longer under the low and high emissions scenarios, respectively. Summer-like conditions are expected to be 21 or 42 days longer by late century under the two different emissions scenarios (Frumhoff et al. 2007; USGCRP 2009).

- Under a high emissions scenario, the length of the winter snow season is expected to be reduced to a week or two in Rhode Island and other southern Northeast states by late century (USGCRP 2009).

Table 4. Precipitation and Weather Projections for U.S. Northeast

Variable	Low emissions scenario (B1)	High emissions scenario (A1FI)
2050 Projection		
Precipitation intensity (amount of rain that falls on rain days)	8-9% increase	
Number of heavy precipitation events	8% increase	
Length of summer	16 days longer	27 days longer
Variable	Low emissions scenario (B1)	High emissions scenario (A1FI)
2100 Projection		
Annual precipitation	~10% increase (4 in/year)	
Winter precipitation	~20% increase, with a greater percent falling as rain than snow	~30% increase, with a greater percent falling as rain than snow
Summer precipitation	Little change	Little change
Precipitation intensity (amount of rain that falls on rain days)	10-15% increase	
Number of heavy precipitation events	12-13% increase	
Droughts	Slight increase	Dramatic increase. Short term drought (1-3 months) once each summer
Length of summer-like conditions	21 days longer	42 days longer
Winter snow season		Reduced to a week or two in Rhode Island

Source: Frumhoff et al. 2007

320.6 River Flow Projections

- Most freshwater enters marine systems through rivers, rather than direct precipitation or runoff (NEFSC 2009). The major freshwater influences for the Ocean SAMP area ([as described further the Ecology chapter Section 250.3](#) are [from Long Island Sound and](#) the Connecticut and Thames Rivers. The Providence and Taunton Rivers are tidal bodies of water with the next most important influence upon the Ocean SAMP area. In the U.S. Northeast, river flow will likely increase from snow melting earlier and faster due to rising winter temperatures. Peak spring flow is projected to occur 5 days earlier during the next several decades, and 7-9 days earlier by mid-century (Frumhoff et al. 2007). By late century, peak flow is projected to occur 10-14 days earlier, depending on the emissions scenario (Frumhoff et al. 2007).
- Under the high emissions scenario, high-flow events are projected to be more frequent, especially in northern New England as a consequence of snow melting faster and increases in

winter precipitation. This will increase the risk of flooding (Frumhoff et al. 2007). High flow events transport pollutants and nutrients to coastal waters, some of which may enter Block Island Sound and Rhode Island Sound.

3. By late century under the high emissions scenario, low-flow periods are expected to arrive more than a week earlier in summer and extend several weeks later in the fall, and with the lowest flow dropping 10% or more. Little change is expected under the low emissions scenario (Frumhoff et al. 2007).

320.7 Ocean Acidification Projections

1. The most recent IPCC report projects that by late century, globally, pH will drop 0.3 to 0.4 units from current levels (IPCC 2007). With the exception of rare events, a change of this magnitude has not occurred in the last 300 million years (Caldeira and Wickett 2003). Such ocean acidification is essentially irreversible over a time scale of centuries with physical and biological impacts upon marine organisms, especially shellfish, and marine infrastructure (USGCRP 2009).

Section 330

Ecological Impacts of Climate Change

1. The Ocean SAMP area is an ecologically unique and complex region in that the Rhode Island Sound and Block Island Sound ecosystems are located at the boundary of two biogeographic provinces, the Acadian to the north and the Virginian to the south. This unique positioning is the source of interesting biodiversity comprised of a mix of northern, cold-water species and more southern, warm-water species. It places the ecosystems of the Ocean SAMP area highly vulnerable to the impacts from warming due to climate change (Pflaumann et al. 2003).

330.1 Pelagic and Benthic Ecosystems

330.1.1 Plankton Bloom

1. Climate changes such as warmer waters, increased cloudiness caused by an increase in storminess, and altered circulation patterns at both vertical and horizontal scales affect plankton (Frumhoff et al. 2007; IPCC 2007; Allison et al. 2009; Yin et al. 2009). Warmer waters allow for higher rates of grazing of phytoplankton by zooplankton (Keller et al. 1999). Phytoplankton form the foundation of marine food webs, and therefore changes in phytoplankton dynamics can have significant impacts on higher trophic levels.
2. According to the Ecosystem Status Report for the Northeast Continental Shelf Large Marine Ecosystem (NEFSC 2009), the northeast U.S. shelf ecosystem is affected significantly by climate change. However, the specific processes that result in changes in zooplankton community structure remain unresolved and the implications for the remainder of the ecosystem are unclear (NEFSC 2009).
3. There is no data on climate change and plankton bloom for the Ocean SAMP area. There is research and data on Narragansett Bay. The Bay may or may not be an analog to the Ocean SAMP area, but findings from research in the Bay are presented below to illustrate the types of marine ecosystem changes that can occur, partially due to warming waters.
4. Narragansett Bay has experienced a decline in the consistency of the winter-spring bloom of phytoplankton. The timing of the annual-cycle of phytoplankton has shifted from a prolonged, bay-wide, large winter-spring bloom to a less consistent, less intense, shorter winter bloom with short intense blooms in the spring, summer, or fall. Data show that at least since the 1970's the biomass of phytoplankton has decreased significantly in Narragansett Bay (Li and Smayda 1998; Smayda 1998; Nixon et al. 2009). It has been hypothesized that these changes have been induced by climate change, specifically warming waters (Keller et al. 1999; Oviatt et al. 2003) and an increase in cloudy days (Nixon et al. 2009). Increased cloudiness limits phytoplankton growth because photosynthesis is light-dependant.
5. Because the bloom now occurs later in the year, warmer waters allow for higher rates of grazing by zooplankton (Keller et al. 1999). The increased grazing depletes the supply of phytoplankton that sinks to the bottom and provides food to the benthos. It has also been

shown that sinking phytoplankton blooms in warmer weather have less nutritional value than cold weather blooms, which would further diminish the food supply of the bottom community (Smetacek 1984). In addition, it has been shown that this decrease in organic matter reaching the bottom (resulting from the diminished phytoplankton bloom) can drastically alter fluxes of nutrients between the sediment and water column. This has important implications for the ecological functioning of Narragansett Bay (Fulweiler et al. 2007).

6. The above factors ~~have~~ are projected to decrease food availability to juvenile bottom-dwelling fish due to declines in the bottom filter- and deposit-feeders that readily consume dead phytoplankton (Nixon et al. 2009). A significant decline (75% from 1980 to 2000) in winter populations of bottom-dwelling fish species has been observed in Narragansett Bay while species that dominate the water column have increased (though less dramatically), which could be attributed to the effects of warming waters (Oviatt et al. 2003; Collie et al. 2008).
7. Similar climate-induced changes affecting bottom-dwelling communities have been observed in areas like the Bering Sea and North Sea (Grebmeier et al. 2006; Kirby et al. 2007).

330.1.2 Stratification and Mixing

1. Codiga and Ullman (2010) described the “typical” annual cycle of density stratification and how it varies geographically across the Ocean SAMP area, including the importance of temperature and salinity in driving stratification (See Chapter 2, Section 230.3 for more detailed discussion). However, the impacts of changes in riverflow/river flow, solar heating, wind strength and storminess due to climate change upon stratification patterns cannot yet be predicted.
2. Warming waters due to changing climate have been reported as at least partially responsible for the increasing occurrence of Harmful Algal Blooms (HAB) (Bricker et al. 2008). HABs are a rapid rise of phytoplankton to levels that pose threats to ecosystem and/or human health (see Chapter 2, Section 250.1.6 for a more detailed discussion). Harmful effects upon ecosystems can result from a massive die-off of phytoplankton can lead to depleted oxygen in the water column when mediated by microbes and create hypoxic (very little oxygen) or anoxic (no oxygen) that can stress or kill aquatic organisms. HABs are now frequently occurring along the coast of Maine and are becoming more common in Massachusetts waters, however, HABs have not been documented in the Ocean SAMP area to date.
3. Stratification of the water column means that oxygen rich water at the surface does not mix down to the oxygen poor bottom layer, causing an environment for hypoxic conditions. Beardsley et al. (1985) and Codiga and Ullman (2010) each found seasonal stratification in the waters of the outer shelf and continental slope with strong stratification of the water column during the spring and summer and weakly stratified or mixed waters during the fall and winter. Wind power increases vertical mixing. If wind speed declines in the Ocean SAMP area, as historical evidence suggests from Rhode Island mainland, this would reduce the wind mixing potential of the water column (Nixon et al. 2009). Stronger storms, as

~~projected, would increase the wind mixing potential of the Ocean SAMP area water column. and possibly greater frequency of storms are also projected, especially during the winter months. The net effect on hypoxia of the two climate impacts is unclear.~~

4. A decrease in water column mixing could also be a result of warmer surface water temperatures and increased inputs of freshwater from rivers (Pilson 2008). Higher water temperatures decrease the solubility of oxygen (the amount of oxygen that the water can hold) and increase stratification, which could contribute to the occurrence and/or severity of hypoxia (NBEP 2009, Pilson 1998). Also, as water temperatures rise, the respiration rates of organisms in the water increase, thus increasing the demand on oxygen supply.

330.1.3 Marine Fish and Invertebrates

1. There has been mounting evidence that over extended periods of time, even small increases in water temperature can significantly affect species composition, distribution, and abundances of fish communities (Murawski 1993, Genner et al. 2004, Perry et al. 2005, Frumhoff et al. 2007). Temperature influences the geographical distribution of marine communities, and has a direct effect on the location and timing of spawning, which in turn affects the subsequent growth and survival of commercially important species, such as flounder, lobsters, and cod (see also Chapter 2, Section 250.3). It is possible that warming waters, in addition to other stresses, may be a significant cause for the decline of ecologically and commercial important species (see also Section 340.5 of this chapter). Nye et al. (2009) found that 24 of 36 fish stocks assessed in the Northwest Atlantic had a statistically significant response to warming water temperatures.
2. It has been projected that with warming, the general distribution of species will shift ~~northpole~~ward and there will be a vertical shift in species distribution to deeper water (e.g., cold-water species), causing a reduction of cold-water species while expanding the ranges of warm-water species (Nye et al. 2009). This projection is based on findings from analysis of a continuous, 40-year trawl survey (1968–2007) in the Northwest Atlantic Ocean. As noted in the Ecology chapter, Section 250.3, Perry et al. (2005) have documented similar shifts in both commercially and non-commercially valuable species, with an average latitudinal shift in distance of 175km (range from 48km to 403km). ~~The global median range shift is projected to be 45–59 km per decade, which generally agrees with observed data.~~ Other studies in the Northwest Atlantic have documented geographical shifts of northern species moving ~~northpole~~ward and being replaced by warmer-water species (EAP 2009, Hare and Able 2007, Rose 2005, Drinkwater 2005, Nye et al. 2009, Frumhoff et al. 2007). Cold-water species that are at the southern extent of their range will be most impacted and may decline in abundance (Drinkwater 2005; Nye et al. 2009). There is evidence that along the northeastern coast of the US, shallow-water sedentary species such as yellowtail flounder, winter flounder, summer flounder, windowpane, and longhorn sculpin have already shifted their center of biomass north toward the pole (Nye et al. 2009). Other species, including American shad, fourspot flounder, goosefish, halibut, cod, alewife, cusk, red hake, and silver hake, have shown some of the largest ~~northpole~~ward distributional shifts, concomitant with a warming trend (Nye et al. 2009).
3. Observational data has also shown that as southern species shifted their range northward, favorable conditions for growth and recruitment resulted in increases in abundance and range expansion. Hare et al. (2010) modeled both exploitation and climate change ~~projections~~edictions upon Atlantic croaker (*Micropogonias undulatus*) and predicted a 60–100% increase of spawning biomass and a 50–100 km northward shift of the center of the population by 2100. Northern species were found to shift northward slightly, contracting their range, or had shifted to deeper depths (Nye et al. 2009). It has also been hypothesized that the pelagic (water-column) fish communities will have higher rates of this northward distributional shift compared to demersal (bottom-dwelling) fish (Cheung et al. 2009).

4. A study in the North Sea found that species with faster life histories were able to respond to temperature changes by shifting their geographical distribution (Perry et al. 2005). Species with slower life histories are already more vulnerable to overexploitation by commercial fishing and will likely not be able to compensate for warming via a rapid demographic response. The differences in responses between fish of varying life histories may alter spatial overlap and disrupt species interactions (Perry et al. 2005). For example, previous work off the northeastern coast of the US found that species with the largest responses in distributional shifts are key prey for non-shifting predator species (Murawski 1993). It has also been hypothesized that local extinctions of fish species will be most common in polar, subpolar, and tropical areas of the world (Cheung et al. 2009). Local extinctions in the North Atlantic along the US and Canadian coasts were also projected to be higher than in other areas (Cheung et al. 2009)
5. In Narragansett Bay and Rhode Island Sound at the mouth of Narragansett Bay, dramatic shifts during the last half century in local fish populations associated with warming winter sea surface temperatures and fishing pressure have been observed (Oviatt 2004, Collie et al. 2008). Fish communities in the Ocean SAMP region may be especially vulnerable because of its location on the border of two biogeographic provinces: many species found at the edge of their geographical boundaries are more stressed, and as environmental conditions change their distribution shifts congruently (Sorte and Hoffman 2004, Harley et al. 2006). The increase in winter sea surface temperature is correlated with the decline of various species that reside in Rhode Island waters during the cold winter months (e.g. winter flounder, silver hake and red hake). These cold-water species may be in the process of being replaced by seasonal, southern migrants (e.g. butterfish and scup) that are increasingly abundant during summer months (Jeffries and Terceiro 1985, Jeffries 2001, Collie et al. 2008).
6. ~~As noted in the Ecology chapter, Section 250. 3, aA~~ further major shift in the Rhode Island Sound coastal fish community is from demersal (bottom-dwelling) fish species to smaller pelagic (water-column) southern fish species and large invertebrates (e.g. squid, crabs, lobster) (Oviatt 2004, Collie, in prep.). The shift from benthic to pelagic species began abruptly around 1980 and is consistent with similar benthic-to-pelagic shifts in other estuaries, such as the Chesapeake Bay (Jackson et al. 2001, Attrill and Power 2002, Genner et al. 2004). ~~Figure 12 shows a similar shift is occurring throughout the U.S. northeast continental shelf region (NSRC 2009).~~

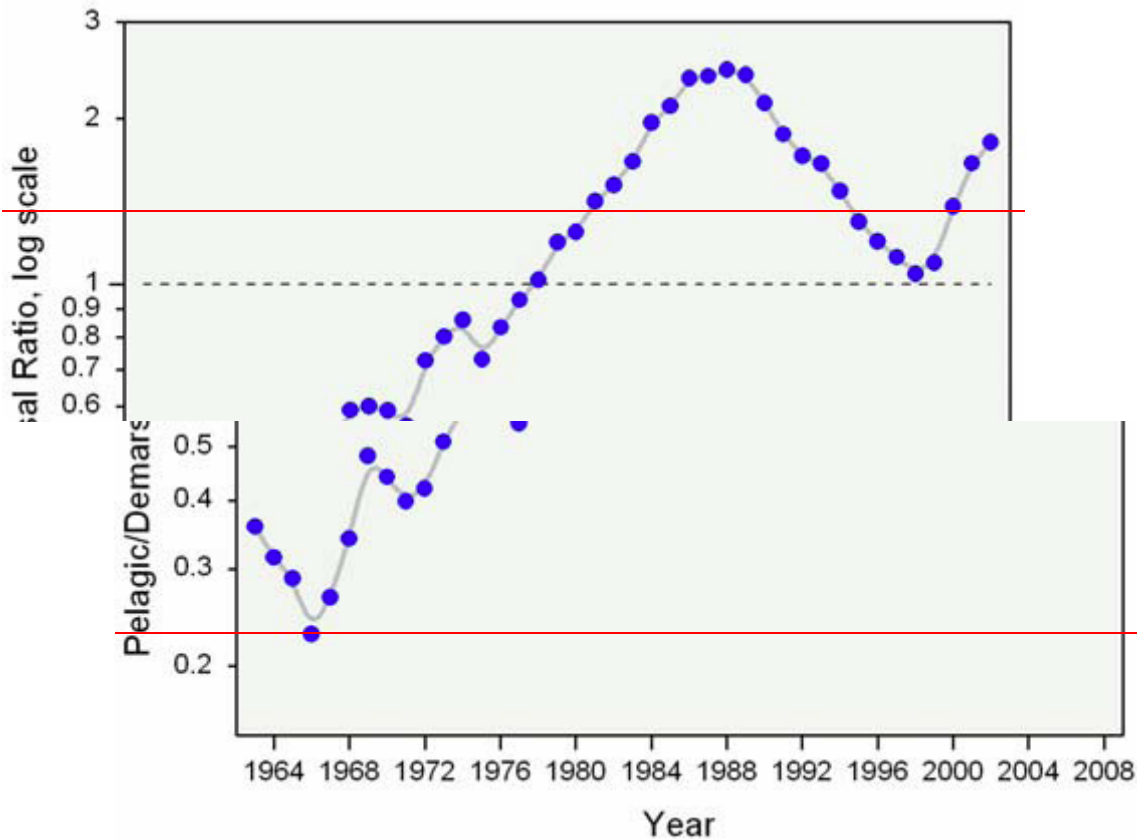


Figure 12. Ratio of Pelagic to Benthic Fish Species caught in Northeast Fishery Science Center Autumn Bottom Trawl Surveys (NEFSC 2009)

7. This shift has been attributed primarily to increasing sea surface temperatures and secondarily to fishing (Collie et al. 2008), with changes in food availability as another potential factor. An increase of the winter North Atlantic Oscillation (NAO) (resulting in warmer ocean temperatures) and the decrease of phytoplankton, are associated with the rapid shift from benthic to pelagic species since the 1980's, and are strongly correlated to changes in the pelagic food web (Collie et al. 2008). During the NAO positive phase, ocean water and climate is warmer in the eastern U.S, south of Cape Cod, and Europe. It is projected that a positive NAO will dominate or have a strong presence during the next 50 to 100 years, especially in winter and under the high emissions scenario (Frumhoff et al. 2007), suggesting that the trends being observed will likely continue at regional scales, and could ~~will~~ impact the Ocean SAMP area as well.
8. It is possible that warming waters may be a significant cause for the decline of commercially important winter flounder by changing the spring timing of when the sand shrimp, which preys on juvenile flounder, becomes active during the year (Jeffries 2001, Taylor 2003).
9. It has been observed that in recent years populations of the ctenophore *Mnemiopsis leidyi*, a comb jelly, have grown in size and the timing of their annual arrival in local waters has shifted from late summer to early summer due to warming waters. This has caused a significant decline of *Acartia tonsa*, a once abundant copepod (a common type of

zooplankton) in Narragansett Bay (Sullivan et al. 2001, Costello et al. 2006, Sullivan et al. 2007). *Cancer* crab, lobster, and some fish populations could also be affected by their larvae being consumed in larger quantities (Sullivan et al. 2001, Oviatt 2004).

10. Rising sea water temperature is expected to adversely affect lobster populations in the Ocean SAMP region due to distributional shifts northward and potential stresses such as increased incidence of disease (see Chapter 2, Section 260.3 and this chapter, Section 330.3.1). Temperature affects lobster's physiology and behavior at all life stages, including molting, settlement of post-larval lobsters, and growth rates, and the movement and seasonal migration (Frumhoff et al. 2007). Currently the southern limit of lobster along the Northeast coast is located near Long Island and northern New Jersey. As waters warm, this southern limit will move northward, possibly north of Rhode Island waters, causing a severe decline in the local fishery and an increase in the northern Gulf of Maine fishery (Frumhoff et al. 2007). According to a comparison of lobster distribution between the relatively colder period from 1965 to 1969 and the warmer period from 2000 to 2004, the center of lobster geographical density has already shifted north (Frumhoff et al. 2007).

330.1.4 Marine Mammals

1. Thirty-six species of marine mammals are known to occur in the Ocean SAMP area (Kenney and Vigness-Raposa 2009) where they use the water for seasonal feeding or **are** migrating to feeding and calving grounds (See Chapter 2, Section 250.4 for further discussion). No research showing direct impact to adult marine mammals' populations as a result of climate in the SAMP is known, however, studies showing indirect impacts are noted below.
2. Most of the marine mammals that occur in the Ocean SAMP area are wide-ranging and not resident in the area. However, some species may pass through without staying more than a few days, but feed within the Ocean SAMP area, and others stay for weeks to several months. Therefore, changes to the marine ecosystem in Ocean SAMP waters due to climate change are less important than the effects of climate change impacts to a wider region outside the Ocean SAMP. Although some of climate change impacts in this case are outside the domain of the Ocean SAMP, it is still important to be aware of how climate change affects these marine mammals. Of the 29 large marine mammals that use the SAMP area, 7 are listed as Endangered under the Endangered Species Act, and therefore demand an extra level of attention. In addition, all marine mammals are provided protection from harassment under the Marine Mammal Protection Act.

~~There are no studies linking projected climate changes on the frequency and abundance of marine mammals specifically in the Ocean SAMP region.~~

~~Most of the marine mammals that occur in the Ocean SAMP area are wide-ranging and not resident in the area. However, some species may pass through without staying more than a few days, but feed within the Ocean SAMP area, and others stay for weeks to several months. Therefore, changes to the marine ecosystem in Ocean SAMP waters due to climate change are less important than the effects of climate change impacts to broader areas a wider region which can affect marine mammals outside the Ocean SAMP. Although some of climate change impacts~~

~~in this case are outside the domain of the Ocean SAMP, it is still useful/important to be aware of how climate change affects these marine mammals.~~

~~— Some of the marine mammals that occur in the Ocean SAMP are protected under the Endangered Species Act and the Marine Mammal Protection Act, and therefore demand an extra level of attention.~~

3. The IPCC (2001) concluded that marine mammals (and seabirds) are highly sensitive to climate changes (IPCC 2001). Sea surface temperature and distribution of preferred prey, for example, are important determinants in the range of marine mammals (Learmonth et al. 2006, Kaschner et al. 2006). The range of some marine mammals that occur in the Ocean SAMP and require polar and cold temperature waters are expected to experience a loss in range as they move northpoleward. ~~Some of the marine mammals whose range is warm water (such as the West Indian manatee) will be more likely to enter the Ocean SAMP as their range is extended northward (Learmonth et al. 2006).~~

4. Species that rely on sea ice or the environment close to the ice edge as part of their habitat will be more vulnerable to climate change (e.g. ice-breeding seals). Climate change models predict reductions in sea ice concentrations. Among the 36 marine mammals identified in the Ocean SAMP range, ringed seal, gray seal, harp seal, and hooded seal are dependent on sea ice (Learmonth et al. 2006).

4.5. In general, species that are more adaptable~~ive~~ to changing prey conditions will be less vulnerable to climate change. Species such as the right whale, that have a relatively narrow range of acceptable prey characteristics and feeding grounds closely linked to specific physical phenomena such as water structure, currents, and temperature, ~~such as the right whale,~~ will be more at risk from climate change/be more likely to experience negative impacts of climate change (Learmonth et al. 2006; Simmonds and Isaac 2007). ~~Intervals between right whale calves lengthened from 3-4 years to 5-6 years (Reference Needed).~~

~~3. Species that rely on sea ice or the environment close to the ice edge as part of their habitat will be more vulnerable to climate change (e.g. ice-breeding seals). Climate change models predict reductions in sea ice concentrations. Among the 36 marine mammals identified in the Ocean SAMP range, the beluga whale, ringed seal, gray seal, harp seal, and hooded seal are dependent on sea ice (Learmonth et al. 2006).~~

6. Changes in prey distribution, abundance, and composition resulting from climate change are recognized by the IPCC (2001) as primary impacts of a changing climate on the marine mammals that feed from the top of the food chain. Marine mammals in general and baleen whales in particular (right whale, humpback whale, minke whale, Bryde's whale, sei whale, fin whale, and blue whale), require dense patches of prey such as copepods and other forms of plankton (Learmonth et al. 2006). Therefore, the distribution, abundance and migration of these whales reflect the distribution, abundance and movements of these dense prey patches (Learmonth et al. 2006). Changes in dominant copepod assemblages have been noted on both sides of the North Atlantic Ocean with increasing water temperatures (Beaugrand et al. 2002).

7. Changing water temperature and prey availability can also impact the reproductive success of marine mammals (IPCC 2007; Whitehead 1997). For example, a decrease in North Atlantic right whale calving ~~rate~~ has been related to abundance of the principal prey species of copepod, *Calanus finmarchicus*, and oceanographic changes influenced by the ~~the effect of climate variability on prey abundance~~ NAO (See section 310.5 for further discussion about NAO; Greene and Pershing 2004). Intervals between right whale calves lengthened from 3-4 years between 1987 and 1992 to 5-6 years between 1993 and 1998 (Kraus et al. 2007). Kenney (2007) compared North Atlantic right whale calving rates with three atmospheric indices including the NOA, and found each of these atmospheric cycles may be correlated with calving. Additionally, ~~and~~ Learmonth et al. (2006) suggest a close correlation between food abundance, body fat condition and fecundity in female fin whales, who in years of food abundance at the summer feeding grounds, might produce a calf in consecutive years, whereas in poor years the cycle can be extended to 3 years (~~Learmonth et al. 2006~~). ~~Thus, there appears to be a close correlation between food abundance, body fat condition and fecundity (Learmonth et al. 2006).~~
8. Research has linked the NAO, prey abundance and right whale calving rates. Positive NAO Index conditions in the 1980's corresponded with favorable calving rates and negative conditions in the 1990's were linked with very low rates. The NAO atmospheric phenomenon has a dramatic effect on the amount of cool, fresh water moving downstream from the Labrador Sea to the Northeast (Pershing et al. 2001). In the winter of 1996, the NAO index exhibited its largest drop of the century. Resulting changes in the water in the Gulf of Maine determine zooplankton ecology. Green et al. (2003) found that major multi-year declines in calving rates have tracked those in *Calanus finmarchicus*, a copepod species that dominates the spring and summertime zooplankton biomass in the Gulf of Maine. The second multi-year decline corresponded with a precipitous drop in *C. finmarchicus* abundance with a record low each year for three years in a row: six in 1998, four in 1999 and only one in 2000 (Kraus et al. 2007).
9. The IPCC (2007) concludes that there will be an increase in climate variability, which could lead to further variations in climate and impacts on the NAO ~~like that caused by the 1996 event~~. Since right whales require at least three years between births, increasing climate variability and corresponding NAO impacts may affect calving rates negatively (Green et al. 2003). ~~A prolonged period of negative NAO index or extreme variability in the NAO could undermine the already tenuous recovery of the North Atlantic right whale.~~
10. Finally, warmer sea temperature has been linked to increased susceptibility to disease, contaminants and other potential causes of marine mammal death (Learmonth et al. 2006). Climate change has the potential to increase pathogen development and survival rates, disease transmission, and host susceptibility (Harvell et al. 2002).

330.1.5 Seabirds

1. How seabirds would be affected by climate change is an active area of research. The Third Assessment Report of the Intergovernmental Panel on Climate Change and many scientists

since then found evidence of the sensitivity of seabirds to climate-ocean changes and concluded that survival and distribution impacts will occur as climates shift (IPCC 2001; USFWS 2010; Wanless et al. 2007; Durant et al. 2004; Jenouvrier et al. 2009). It is known that changes in climate affect seabird behavior and populations in terms of food availability, nesting and feeding habitat, the ability to carry out courtship behavior, breeding, survival of young, and migration patterns. Seabirds that frequent the Ocean SAMP area may be affected by these impacts occurring both in and outside the Ocean SAMP. Each type of seabird (e.g. pelagics, sea ducks, gulls and relatives, and shorebirds) has a slightly different seasonal use of the area and, therefore, the impacts of climate change may affect them differently.

330.1.5.1 Nesting and Feeding Habitat

1. All 67 oceanic bird species (such as shearwaters and petrels found in the Ocean SAMP area) are among the most vulnerable birds on Earth to climate change because they don't raise many young each year; they face challenges from a rapidly changing marine ecosystem; and they nest on islands that may be flooded as sea level rises (USFWS 2010).
2. Those species that are found in the Ocean SAMP area that nest in coastal habitats are also vulnerable to sea level rise from climate change (USFWS 2010). For example, Piping Plovers (federally threatened) and Least Terns (State Threatened) could lose critical beach nesting habitat (pers. comm., P. Paton, URI).- Vulnerable species that nest in salt marsh habitats in the Northeast include Saltmarsh Sharp-tailed Sparrows (this species is only found nesting in Northeastern salt marshes), Seaside Sparrows, and Willet (pers. comm., P. Paton, URI). -Finally, species that nest on the ground on low offshore islands (e.g., Roseate Terns - federally listed as endangered, and Common Tern) would be extremely vulnerable to sea level rise and loss of critical nesting habitat, for example, Great Salt Pond on Block Island which is a regionally important migratory shorebird stop over site (pers. comm., P. Paton, URI).
3. Coastal wetlands provide critical stopover habitat for migratory shorebirds that pass through the Ocean SAMP area. Most shorebird species forage on beaches and mudflats, or in low salt marshes (Koch and Paton 2009). Rhode Island provides valuable stopover habitat for a wide array of migratory species, particularly in the fall for species that breed throughout the tundra of Canada/Alaska and stop in Rhode Island and coastal New England to refuel before heading farther south to the southern U.S., Caribbean, and South America (pers. comm., P. Paton, URI). Beaches (e.g., Napatree Spit) and coastal ponds (Trustom Pond, Goosewing, Ninigret) provide useful foraging habitat for these long- and short-distance migrants. Loss of this foraging habitat to sea level rise could have major impacts on shorebird populations. (pers. comm., P. Paton, URI).

330.1.5.2 Food Availability

1. Many of the seabirds that prey on fish and plankton are likely to have their food supply reduced or relocated if the predicted effects of climate change on lower trophic levels occur (Daunt et al. 2006; Frederiksen et al. 2006). There is no data on seabird impacts in the Ocean

SAMP as a result of changes in food supply, but there is evidence elsewhere. The natural climate variability of El Niño Southern Oscillation (ENSO) events has provided insight into how sea surface temperature variation can result in significant change in the marine ecosystem. The population of Sooty Shearwaters and Common Murres off the west coast of North America greatly declined due to starvation during the 1997-98 ENSO event ([Mathews-Amos and Berntson 1999](#)). Cormorants and pelicans experienced mass mortalities during the 1982-1983 ENSO event [which were attributed to reduced nutrients in surface waters leading to decreased primary and secondary production](#) ([Glynn 1988](#))([CRMC 2000](#)). The Common Murre is a frequent winter visitor to the Ocean SAMP region. Double-crested Cormorants are a common breeding species in Rhode Island (nesting in Narragansett Bay), and Great Cormorants are common in winter months in coastal Rhode Island.

330.1.5.3 Breeding

1. Time series data analysis of over 100 species of seabirds in the North Atlantic suggests a strong relationship between seabird breeding success and climate variables related to the North Atlantic Oscillation (NAO), which influences sea surface, air temperatures, precipitation and other aspects of regional climate (Sandvik et al., 2008). The results suggest that sea surface temperature was the single most relevant parameter to breeding success of seabirds. Sea surface temperature affects the marine ecosystem and seabird food abundance, distribution and seasonality. A lack of food affects the reproductive success of seabirds with a reduction in numbers of eggs produced, those successfully hatching and the number of breeding pairs (Wanless et al. 2005).

330.1.5.4 Migration Patterns

1. Climate change also affects the timing of arrival and departure of migratory seabirds, and average laying dates (Frederiksen et al. 2004; Crick 2004). Time series data of long-term arrival and passage of migrants are not available for the Ocean SAMP area. However, reported observations of some bird species in the United Kingdom have been increasingly later in the fall, implying a longer stay on breeding grounds (Sparks and Mason 2001). Also, warmer springs are associated with earlier arrivals and earlier breeding (Sparks et al. 2001). Depending upon prey resources utilized, climate-related alterations of the marine ecosystem could cause mismatches between migratory time and cycles in abundance of major prey species in the Ocean SAMP area (i.e., altered phenology).

330.1.6 Sea Turtles

1. Six species of sea turtles [all](#) known from the North Atlantic, with four – green, loggerhead, Kemp’s ridley and leatherback sea turtles – occurring rarely or occasionally in the Ocean SAMP area (Kenney and Vigness-Raposa 2009). All four are on the U.S. endangered species list. Warmer seawater temperatures may increase sightings of these sea turtles in the Ocean SAMP boundaries, but this possibility has not yet been considered in models or other attempts to project climate change impacts to the Ocean SAMP area.
2. The major impact of global climate change on sea turtles that occur in the Ocean SAMP area is on their nesting and feeding grounds farther south outside the domain of the Ocean SAMP.

This section summarizes these impacts outside the Ocean SAMP, recognizing that they are protected under the Endangered Species Act and therefore, demand an extra level of attention.

3. Sea level rise will affect nesting areas on low-level sand beaches. All female turtles come ashore at nesting beaches, dig nests in the sand, lay their eggs, and then return to the sea. These areas of low-lying, sandy, coastal beaches, often key habitat for nesting sea turtles, are also areas that are most vulnerable to the impacts of sea level rise (Fuentes et al., 2009a). Erosion and inundation of beaches caused by rising sea level and more intense storms adds the potential for further dangers to nesting sites that are already threatened by people and animals. Coastal flooding can increase rates of egg mortality and decrease reproductive success as sea level rises closer to sea turtle nesting sites. The Outer Banks of North Carolina is especially prone to this because most beaches are backed by coastal development (e.g., seawalls, roads, etc.) or salt marsh, and increased storm surge and coastal land loss will threaten these beaches which have nowhere to retreat (Hawkes et al., 2007).
4. Rising temperatures will affect incubating sea turtle eggs. The optimal temperature range for incubation is 25-35°C (77-95°F), with reduced hatchling success outside that range (Fuentes et al. 2009b). In addition, temperature during the middle third of incubation determines the sex of the hatchling. Hatchling sex ratio is 50:50 at 29°C (84°F), with more males at cooler temperatures and more females at warmer (Fuentes et al. 2009a). Vegetation (shading), beach slope, humidity, rainfall and egg position in the nest can all influence incubation temperature and sex ratio (Hawkes et al., 2007).
5. Loggerhead turtles nest in North America from southern Florida to southern Virginia and it is theorized that more males are born in the northern sites due to cooler temperatures (Mrosovsky and Provancha, 1989). Loggerhead turtle nests in Florida are already producing 90% females owing to high temperatures, and if warming raises temperatures by an additional 1°C (1.8°F) or more, no males will be produced there (Mrosovsky and Provancha 1989).
6. One study of loggerhead sea turtles at Bald Head Island in North Carolina found that increased sea surface temperature is associated with earlier nesting and longer nesting seasons. Modeling predicted air and sea surface temperature increases indicate that nesting would need to be altered only a few days with a 1°C (1.8°F) increase and up to a week with a 3°C (5.4°F) increase (Hawkes et al., 2007). These results suggest that there is hope for sea turtle adaptation, especially along their northern nesting range, and that protecting these male-producing sites should be a priority for future management.
7. Adult feeding patterns are also affected by climate change. Sea grass beds are declining due to a variety of reasons including pollution and increased sea temperatures from climate change, and; water temperature is higher on inter-tidal sea grass flats, typically feeding grounds for green turtles (Short et al. 2006).
8. Leatherbacks may also shift their northern distribution due to increasing air and sea temperatures. McMahon and Hays (2006) investigated movements of one leatherback

species, *Dermochelys coriacea*, using satellite telemetry which revealed that habitat utilization remains within the 15°C isotherm and has moved north along with the isotherm by 330 km in the summer position in the North Atlantic over the last 17 years.

8.9. Sea turtles have existed for more than 100 million years and have survived ice ages, massive sea level fluctuations, and major changes to the continents and the seas (Fuentes et al. 2009a). As a result, they may be able to respond to unfavorable nesting temperatures or inundation of beaches as they have in the past, by seeking out new nesting sites or modifying the seasonality of nesting. However, what is different today is limited availability of new habitat due to steadily encroaching human development of coastal areas and the rapid rate of climate change.

330.2 Chemical Oceanography

330.2.1 Ocean Acidification

1. Marine animals that have shells or skeletons made of calcium carbonate (such as corals, quahogs, foraminifera, slippershell snails, and sea stars) may be impacted by further reductions in pH levels (increased acidity) (Cooley and Doney 2009). As ocean alkalinity decreases, the dissolution rate of calcium carbonate increases and less dissolved carbonate ions are available for animals to take up and use to form shells and skeletons (USGCRP 2009). Reduced alkalinity could also depress the metabolism of marine organisms with high metabolism such as pelagic fishes and squid, which could lead to a decreased capacity to take up oxygen in the gills and cause asphyxiation in some fish, squid and shrimp (TRS 2005, Fabry et al. 2008). Although the impacts to larval temperate fish are unknown, it has been observed in reef fish that decreases in pH can disrupt the olfactory cues used by larval fish to find suitable habitat for settlement, which could result in the reduction of population sustainability (Munday et al. 2009). Impacts to reproduction and larval development has already been shown in a lab setting, but additional possible impacts could include effects on immunity, and development at other life stages (Holman et al. 2004; Burgents et al. 2005; Fabry et al. 2008).
2. Recent laboratory research has shown that many organisms with calcium carbonate shells, such as periwinkles, oysters, urchins and calcareous green algae, formed less calcium carbonate when the pH dropped below 8.2 (Ries et al. 2009). The same study also documented seven species whose rates of calcium carbonate formation increased and one species that had no response when exposed to lower pH levels (Ries et al. 2009). The impacts of ocean acidification may be highly varied among species.

330.3 Emerging Issues

330.3.1 Disease

1. Marine diseases are not widely studied in the Ocean SAMP area. However, increasing water temperatures and salinities due to changing climate are creating conditions that are favorable to the spread of disease organisms (Kennedy et al. 2002). Temperature change in general

makes marine species more vulnerable to stress and disease, particularly if it occurs during critical periods of the species life cycle.

2. Diseases in southern waters could extend northward and negatively impact local communities of marine plants and animals. For example the American oyster, which had repopulated Narragansett Bay and the south shore salt ponds in the 1990's after being absent from commercial fisheries for nearly four decades, was severely afflicted by a southern oyster parasite causing the Dermo disease (Ford 1996, Cook et al. 1998). A 1998 disease survey found this parasite, which was rarely seen north of the Chesapeake Bay until the 1990's, in over half of the dead oysters (Cook et al. 1998). The spread of Dermo is attributed to warming waters by having extended the northern limit of the parasite's geographical range (Ford 1996, Cook et al. 1998, Oviatt 2004, Frumhoff et al. 2007).
3. Lobster shell disease is described in the Ecology Chapter (section 270.3). Though the cause of the spread of this disease is unknown, it has been speculated that anthropogenic forces are responsible, including warmer water temperatures (Cobb 2006, Castro et al. 2006). Currently, the southern extent of the commercial lobster harvest appears to be limited by this temperature-sensitive disease, and these effects are expected to increase as near-shore water temperatures rise (Frumhoff et al. 2007). The disease was found in less than 1 percent of lobsters sampled in 1996 and by 2004 the percentage of diseased lobsters sampled grew to 20-40% (Cobb 2006). Though the disease is not always fatal, it has had negative consequences for lobster marketability. The persistence and increase in prevalence of the disease in recent years has serious implications for the sustainability of the lobster fishery, especially as marine waters continue to warm.

330.3.2 Invasive Species

1. An invasive species is an introduced, non-native species that survives when introduced to new ecosystem and does, or is likely to, cause harm to the ecosystem. Introduced species are recognized as one of the main anthropogenic threats to biological systems (Sala et al., 2000). As local and regional waters warm, additional warm-water species that once found the colder temperature inhospitable will be able to reproduce and spread (Frumhoff et al. 2007). Sorte et al. (2010) conducted a meta-analysis of marine species experiencing range shifts and found that 75% of the range shifts were in the ~~po~~lenorthward direction, consistent with climate change scenarios. The expansion of the northward shift of limits of warm water species may introduce new species into the Ocean SAMP area and warmer temperature could prolong the stay of current seasonal migrants (Oviatt et al. 2003, U.S. EPA 2008).
2. Invasive species that can breed in warmer winter waters may have an advantage over late-recruiting native species (Stachowicz et al. 2002a). Additionally, as environmental changes affect native species composition and abundance, and potentially diversity, resistance to the establishment and spread of invasive species could decline (Stachowicz et al. 2002b). Resistance to invasive species may also be impeded by compound stressors such as anthropogenic disturbance (McCarty 2001) or the spread of new diseases (Harvell et al. 2002), in addition to the stress of temperature increases (Stachowicz et al. 2002b). It is also possible that certain non-native species could have minimal impacts to local marine

ecosystems, and perhaps become acceptable or even desirable in future years (Walther et al. 2009).

3. There are no published data on invasive and introduced species in the Ocean SAMP area, but there is evidence of marine species coming from the south that have moved or are moving into New England, in some cases thought due to climate change (Carlton 2010) (see Table 5).

Table 5. Marine Invasions coming from the South

Species	Geographic Origin	Habitat	Notes
Lionfish (<i>Pterois miles</i> and <i>P. volitans</i>)	Indo-Pacific		An invasive warm-water species that feeds on juvenile fish. It is now found as far north as Rhode Island (Morris and Whitfield 2009)
Bryozoan <i>Zoobotryon verticillatum</i>	Unknown	Fouling	Ephemeral colonists detected in the Mystic River Estuary, Connecticut (Carlton 2010)
Sea squirt <i>Styela plicata</i>	Northwest Pacific	Fouling	Ephemeral colonists detected in the Mystic River Estuary, Connecticut and Long Island Sound (Carlton 2010)
Rapa whelk <i>Rapana venosa</i>	Japan	Benthos	Established in Chesapeake Bay (Carlton 2010)
Wedge clam <i>Rangia cuneata</i>	South Atlantic bight/Gulf of Mexico	Benthos	Established in Hudson River (Carlton 2010)
Barnacle <i>Amphibalanus amphitrite</i>	South Pacific	Fouling	Colonizes New England in warm summers (Carlton 2010)
Barnacle <i>Amphibalamus subalbidus</i>	Chesapeake Bay and south	Fouling	Recorded in Charles River, Boston (Carlton 2010)
Isopod <i>Synidotea laevidorsalis</i>	Japan	Fouling	Detected in New York (Carlton 2010)

Section 340

Implications of Climate Change for Human Uses

1. Climate change affects all dimensions of human activity in multiple direct and indirect ways. This section reviews the ramifications—both potentially ~~negative~~~~adverse~~ and positive—of climate change for the human uses expressed in other Chapters. The Ocean SAMP's jurisdiction for management and regulation ~~area~~ is offshore, ~~however~~~~but~~ there are links between offshore and shore-side uses. Therefore, we look at the potential impacts of current and future climate changes to both offshore uses and to selected shore-side uses as it would affect Ocean SAMP uses. The Rhode Island CRMP manages over the shore-side uses more comprehensively.
2. There is little or no data and modeling of specific climate change impacts to human uses in the Ocean SAMP area. However, the direction and magnitude of the effects of climate change are becoming increasingly well understood. ~~While it~~ is possible to take these climate changes and overlay them on human uses to anticipate their general consequences. ~~the complexity and uncertainty must be acknowledged and understood.~~ As Figure 123 illustrates, the greater the number of climate change variables and direct and indirect interactions, the greater the uncertainty and complexity of climate change impacts. Added to the complexity is the fact that a number of these variables interact in a variety of ways, making the net impact of climate change drivers upon human uses unpredictable given the amount of research available at this time. ~~positive feedback loops.~~

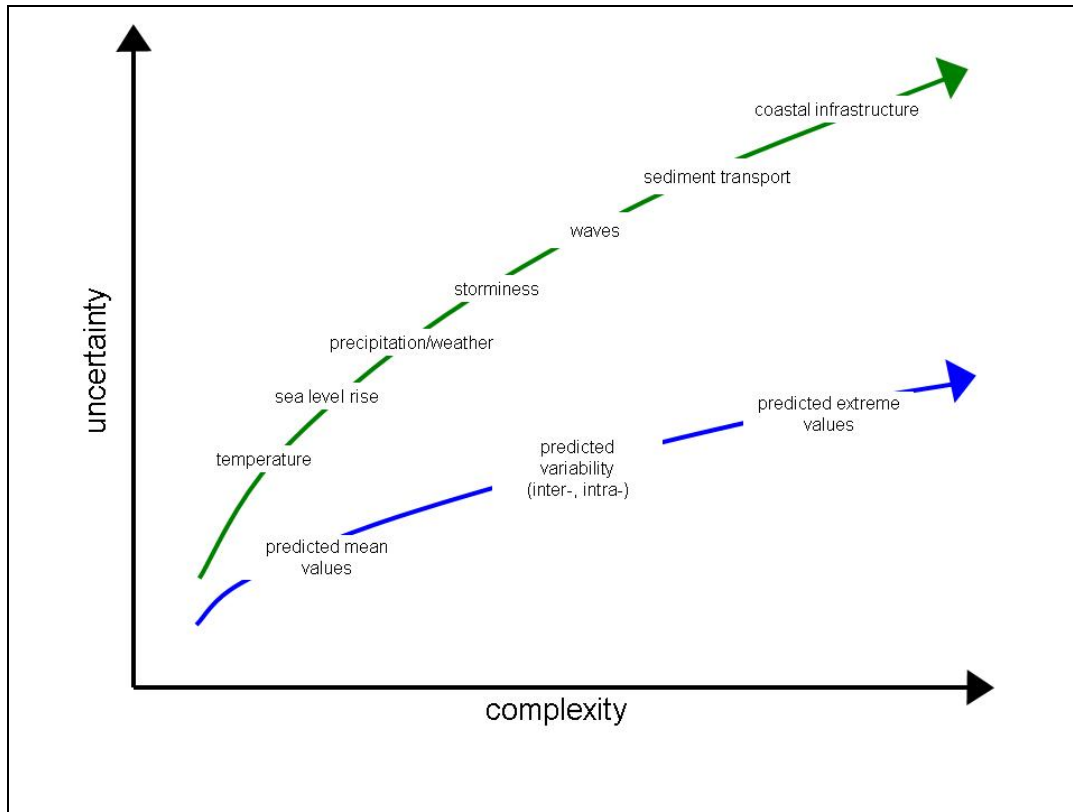


Figure 123. Complexity and uncertainty of linked climate change impacts (Adapted from PIANC 2008)

340.1 Marine Transportation, Navigation and Related Infrastructure

340.1.1 Introduction

1. Marine transportation, navigation and related infrastructure, as described in Chapter 7, include transport by sea of various types of goods and services as well as people, and involve **issues** related **issues** to it including navigational routes and the ports and harbors that support it. Chapter 7 describes the importance of transportation and navigation through the **Ocean SAMP** area for cargo ships, such as tankers, bulk carriers, **and** tugs and barges; passenger ferries; naval vessels; government research, enforcement, and search-and-rescue vessels; and pilot boats. In addition, they are supported by a network of navigation features including shipping lanes, traffic separation schemes, navigational aids, and other features that facilitate safe navigation and adjacent land-based infrastructure, such as cargo handling facilities and storage areas in nearby ports.
2. Climate change may influence numerous aspects of the way marine transportation and navigation occurs in the **Ocean SAMP** area as well as the infrastructure that supports it. Table 6 presents a summary of the primary drivers of climate change with **direct** potential impacts to **the user groups associated with** marine transportation, navigation and infrastructure.

3. There are many potential impacts. Among the most critical is an extended shipping season. A longer shipping season has positive ~~implicationsaets~~ for the shipping industry. ~~Although it is projected that increasing air temperatures will reduce concern of icing in waterways and on vessels and infrastructure, it is not clear, given the potential for negative impacts to infrastructure and ports, what net impact this will have on -and increase opportunity for all types of shipping through the Ocean SAMP area.~~

4. Increased vulnerability of infrastructure will also be of significant concern to shipping and navigation. Coastal and offshore infrastructure may be subject to greater damage from more intense storms and increased decay from increasingly acidic seas (PIANC 2008). In addition, coastal infrastructure is more likely to be flooded by higher sea levels and more coastal infrastructure will be exposed to higher wave loads and tidal fluxes, increasing fatigue and corrosion.

Table 6. Climate Change Impacts (Positive or Negative) on Marine Transportation, Navigation and Infrastructure affecting the Ocean SAMP area

Climate Change Variable	Potential Impact	Marine Transportation	Navigation	Infrastructure
Increasing air temperatures	Extended shipping season and use of infrastructure (Neumann, 2009)	+	n/a	+
	Degradation and shortened lifespan of ships and infrastructure	-	-	-
	Reduced icing in waterways and on vessels and infrastructure (PIANC, 2008)	+	+	+
Increasing sea level	Increased exposure to infrastructure (corrosion)	-	n/a	-
	Increased likelihood of flooding/inundation of coastal infrastructure (Neumann, 2009)	-	n/a	-
	Need for higher passing height for bridges (PIANC, 2008)	-	-	-
	May increase navigability of waterways (TRB, 2008)	+	+	+
Increase in storm intensity	Changing movements of sediment (erosion/accretion) (EPA, 2008)	-	-	-
	Increased degradation and vulnerability of infrastructure (coastal and offshore) (PIANC, 2008)	-	n/a	-
	Loss/retreat of land (for associated infrastructure) (PIANC, 2008)	-	n/a	-
	Increase in unsafe condition and poor visibility for navigation/transferring cargo (TRB, 2008)	-	-	-
	More need for emergency planning and rescue (Neumann, 2009)	-	n/a	-
Increasing precipitation and decreasing wind speed	May result in changing currents (PIANC, 2008)	?	?	n/a
	Changes in <u>ing</u> movements of <u>sediment transport</u> (erosion/accretion)	-	-	-
Longer summers and decreased snow season	Extended shipping season and use of infrastructure (Neumann, 2009)	+	n/a	+
	Reduced icing on vessels and infrastructure (PIANC, 2008)	+	+	+
More acidic ocean	Increasing corrosion <u>rates</u> of vessels and infrastructure (PIANC, 2008)	-	n/a	-
Key: +: potentially positive effect -: potentially adverse effect n/a: no significant anticipated effect <u>?: unknown impact</u>				

340.1.2 Increasing Air Temperature

1. Increased air temperatures will extend the length of ~~increase~~ the shipping season and allow for higher volumes of goods shipped at lower costs due to less severe cold weather (EPA 2008).

2. Operations on vessels and associated shoreside ~~at~~-infrastructure will need to account for higher temperatures in order to protect workers from extreme heat (EPA 2008).
3. Air temperature increases will decrease the incidence and severity in waterways and of icing on vessels and infrastructure. On vessels, less icing will decrease the need for lowering freeboard to increase their stability (Nicholls et al. 2007).
4. Higher air temperatures and corresponding elevated water temperatures, will increase the likelihood that invasive species from ballast discharge survive in local waters (Kling and Sanchirico 2009).
5. Infrastructure can be affected by increased air temperatures as well, including more rapid deteriorating of paved areas and greater energy needed to cool stored goods (EPA 2008).

340.1.3 Rising Sea Level

1. Sea level is already rising in the Ocean SAMP area, and is projected to rise at an increasing rate in the future. Sea level rise will reduce the effectiveness and decrease the life of existing coastal structures such as seawalls and revetments, docks, roads, and bridges (PIANC 2008). Sea level rise of the magnitude predicted could also potentially compromise onsite wastewater treatment systems, municipal sewage treatment plants and stormwater infrastructure. Other risks associated with sea level rise include salt intrusion into aquifers and higher water tables which could compromise individual sewage disposal system.
2. Higher sea levels increase the likelihood of flooding and inundation of coastal lands and infrastructure. Any given storm event will surge higher on land because the relative sea level is higher than in the past and be exacerbated in the future by more intense storms. This can affect the use of infrastructure in ports and harbors both over the short term (during a flooding event) and long term (extensive damage from inundation) and impact the ability for vessels to access the coast (for example, to unload cargo or pick up passengers) (Neumann 2009).
3. Higher flood levels and storage area inundation may also inundate contaminated (or potentially contaminated) lands, and/or infrastructure not designed to withstand flooding. These areas could require new containment methods to prevent leaching (EPA 2008).
4. According to Titus and Richmond (2001), Rhode Island has 47.1 square miles (mi²) (122.0 square kilometers (km²)) of land lying within 4.9 vertical feet (1.5 meters) of sea level with an additional 24 mi² (108.8 km²) between 4.9 and 11.5 feet (1.5 and 3.5 meters). This 4.9-foot (1.5-meter) contour roughly represents the area that would be inundated during spring high water with a 2.3-foot (0.7 meter) rise in sea level. This sea level rise scenario is within current end of century projections.
5. By mid-century, the 100-year flood is expected to occur more frequently than every 25 years in nearby Woods Hole, Massachusetts, under the high emissions scenario (Kirshen et al.

2008). By late century, it is expected to occur more frequently than every 2 years. The 100-year storm commonly used by the National Flood Insurance Program standards is a flood event that has a 1% chance of being equaled or exceeded in any given year. The projections for Woods Hole indicate that the 1% annual chance flood will increase to 4% annual chance of occurring by mid-century and 50% by 2100 and associated increases in flooding and associated damages. These estimates are based on more recent sea level rise estimates that include a conservatively low degree of ice melt impacts.

6. When flooding overtops ports, there is large area of inland inundation because ports are typically built in flat, low-lying areas (EPA 2008). Options for protection include, but are not limited to elevating facilities, filling land and/or installing shoreline protection structures. Each of these options would need to be analyzed on a case by case basis. The amount of fill required to combat such inundation would therefore be very large. Aggregate supply (sand and gravel) for armoring and fill is limited in Rhode Island due to municipal policies on sand and gravel mining and lack of publicly or privately owned land alternatives.
7. Increased sea level will reduce overhead clearance between the superstructure of ships and bridges while boating through Narragansett and Mount Hope Bays, thereby limiting operations.
8. A corresponding potential positive impact of sea level rise may be increased navigability of waterways and a decreased need for dredging to accommodate larger-draft vessels (TRB 2008). This could positively benefit ships that pass through the Ocean SAMP area due to currently significant demands for dredging in several parts of Narragansett and Mount Hope Buzzards Bays (TRB 2008). Increased ease of navigability may also lead to an increase in shipping of goods to and from Rhode Island ports (TRB 2008).

340.1.4 Increasing Storm Intensity

1. Increased storm intensity can affect sediment movements due to increased wave heights, causing changes in erosion and accretion patterns. Differing sediment movements can affect needs for dredging, preferred shipping routes and port operations (EPA 2008).

Flooding and Storm Damage to RI Ports and Harbors

Providence: Providence's vulnerability to flooding stems from two main geographic features: its location at the head of Narragansett Bay and its low elevation downtown and along the port. During the Hurricane of 1938, Providence experienced a storm surge of more than 15 feet above MTL, with waves measuring 10 feet above the surge level. The hurricane flood waters inundated the city, damaged buildings and other infrastructure, and demolished the wharves of the inner harbor. Damage amounted to \$16.3 million, equivalent to about \$225 million in today's dollars. In 1954, the downtown area was flooded by 12 feet of water (Vallee and Dion 1996). Damage is estimated to have been \$25.1 million, about \$134 million in today's dollars (Providence 2000).

East Providence - The worst coastal flooding in East Providence occurred in the 1938 and 1954 hurricanes, severely impacting the City's waterfront infrastructure. On two occasions the dock of the Gulf Oil Corporation was completely destroyed along with the connecting railroad. Large ships in the Providence River were torn from their moorings and tossed onto shore. For several days, debris blocked roads, railways, and waterways, creating hazardous conditions that hampered emergency and repair crews. Residential structures located along the waterfront were severely damaged or destroyed, while homes inland along the rivers were flooded (East Providence 2002).

2. Increased intensity in storms will increase periods of high waves, decreasing time for ships to unload at terminals and increasing berthing time for ships at terminals and delayed departures (EPA 2008).
3. Increased time needed to unload cargo may result in the need for more area for anchoring of waiting vessels in port areas (EPA 2008).
4. Additionally, offshore loading and unloading between vessels can only occur with waves below a certain height and longer than a required wave period. With increased storm intensity, wave heights too large for transfer of goods (and personnel) will occur more frequently (EPA 2008). This is critical since demand for natural gas in winter in Providence can be a bottleneck for distribution.
5. Increased storm intensity will also increase degradation and vulnerability of associated infrastructure. Movements of sediment due to increased storminess may also decrease safety of structures and increase probability of flooding through erosion of coastal land (PIANC 2008).
6. Increased storm intensity may lead to decreased regularity of port functions and increased need for storage capacity at container terminals (PIANC, 2008). This may increase shipping delays due to suspended operations during intense storms and could decrease the reliability of marine shipping, impacting business of shippers and receivers of shipped goods (EPA 2008).
7. More intense storms may also decrease visibility and accessibility to malfunctioning installations such as beacon lights (PIANC 2008).

8. Port security could be adversely impacted by increasingly intense storms and could result in less security (for example, malfunctioning video cameras, radar equipment and perimeter fencing) (EPA 2008). Alternatively, the threat to port security might be reduced due to increased storm intensity, as they would have a more difficult time operating their equipment in poor weather.
9. More intense storms, bringing more precipitation in short periods of time, will also require increased capacity of stormwater facilities adjacent to coastal infrastructure supporting port facilities (EPA 2008).
10. Increased storm intensity will increase the likelihood of debris inhibiting navigation and/or anchoring at ports and harbors (EPA 2008).
11. Unsafe conditions and poor visibility during increased storm intensity may increase shipping delays and damage vessels. Aids-to-navigation such as more buoys, with higher-intensity lights, and more sound and electronic signals can be used to attempt to mitigate these impacts, but at a high cost. This may also increase the need for emergency planning and rescues which will also incur considerable economic costs to the associated industries (TRB 2008).

340.1.5 Changing Precipitation and Weather

1. Changing precipitation and weather patterns may result in differing sedimentation and shoal formation, and may complicate navigation by either offsetting increased water levels or causing need for additional dredging (TRB 2008).
2. Decreasing wind speed could alter currents and change preferred shipping routes (PIANC 2008).
3. Changing weather combined with warmer water may cause marine organisms (phytoplankton, fish, marine mammals) to move into existing preferred shipping lanes, causing possible problems for navigation and need for relocating the lanes (EPA 2008).

340.1.6 Ocean Acidification

1. Decreasing pH levels and the corresponding increase in carbonic acid in the seas may increase the rate of corrosion on vessels and infrastructure associated with marine transportation, navigation, ports and harbors. However, increased corrosiveness is also dependent on other environmental factors that will likely be effected by climate change, including some of which may have mitigating effects on corrosiveness. Existing structures and vessels may experience a shorter lifespan due to more corrosion (PIANC 2008).

340.1.7 Indirect Impacts

1. The impacts presented above are the most likely and most direct effects of the drivers of climate change upon marine transportation, navigation and its supporting network and

infrastructure. Below is a description of some of the ~~potential~~predicted indirect and cumulative impacts predicted to affect marine transportation in the Ocean SAMP area.

2. Warmer temperatures may change the seasonality of energy demands, with less energy for heating needed in winter, and more energy for cooling in summer. The net effect on energy demand is not known, but it may influence the mix of energy needed and the seasonality and amount of regional marine oil and gas shipping through the Ocean SAMP area (PIANC 2008).
3. The effects of climate change may affect insurance coverage and could increase premiums on insured property and vessels with combined impacts from increased sea level and storm intensity. Currently, the marine transportation insurance industry is very concerned about rising costs associated with climate change. In response, they are exploring other strategies for insuring vessels and infrastructure including shifting some of the risk to customers and providing technical support and price incentives for customers to decrease exposure to risks (EPA 2008). It has been suggested that as insurance premiums rise, reflecting increasing risk, there will be greater incentive to incorporate adaptation measures to infrastructure (~~Klein~~unreuther 2010).
4. Caldwell and Segall (2007) report that as the mean high water mark moves inland due to sea level rise, the legal boundary between private and state-owned land also moves (reported in ~~Kling~~ and Sanchirico, 2009). This may effect issues of ownership at ports in Rhode Island and complicate issues of planning for future impacts of climate change upon coastal infrastructure if ownership of the lands upon which they lie is in question.

340.2 Recreation and Tourism

340.2.1 Introduction

1. Coastal recreation and tourism, as described in the Recreation and Tourism chapter of the Ocean SAMP, includes but is not limited to cruise ship tourism, beach-related activities, surfing, boating, diving, and wildlife viewing. Climate change may impact people's decisions about destinations due to the ~~implications~~et of climate change on the coastal and marine landscape, ecosystem and infrastructure (Agnew and Viner 2001). While the research in this area is sparse with respect to the impacts of climate change per se, the following is based on research on the effects of these potential impacts to the types of recreation and tourism related to the Ocean SAMP area. Table 7 presents a summary of the primary drivers of climate change with direct potential impacts to the user groups associated with recreation and tourism in the Ocean SAMP area.

Table 7. Climate Change Impacts on Recreation and Tourism affecting the Ocean SAMP area

Climate Change Variable	Potential Impact	Boating and related activities	Beach related activities	Diving	Wildlife viewing
Increasing air temperatures	Warmer temperatures allow for longer boating and cruise ship tourism seasons	+	+	+	+
Increasing sea level	(Partial) Inundation of beaches and unique coastal habitats	-	-	n/a	-
	Migration or loss of coastal lagoons, salt marshes and tidal salt flats	-	n/a	n/a	-
Increase in storm intensity	More severe storminess	-	-	-	-
	Increased erosion of beaches and unique coastal habitats	?	-	n/a	-
	Increased storm overwash and breaching	-	n/a	-	-
	Earlier hauling out of recreational boats	-	n/a	-	-
	More Block Island ferry service interruption	-	-	-	-
Increasing precipitation	More erosion causing sedimentation and shoaling of waterways	-	n/a	-	n/a
	Increased nutrients and land-based sources of pollution in the sea from runoff	-	-	-	?
Decreasing wind speed	More cloudiness and decreased visibility	-	-	n/a	-
	Decreased attractiveness for sailing and sailboat racing	-	n/a	n/a	n/a
Longer summers and decreased snow season	Extended summer season	+	+	+	?
	Warmer water will bring more algae (red tide) and jellies	n/a	-	-	?
	More periods of drought during summer could lead to water use restrictions	-	-	-	?
More acidic ocean	May adversely impact shellfish and alter food web dynamics including fish and sea bird communities	-	n/a	n/a	?
	Increased ocean acidity may increase decay rates of underwater structures	-	n/a	-	n/a
Key: +: potentially positive effect -: potentially adverse effect n/a: no significant anticipated effect <u>?: unknown impact</u>					

- Increasing air and sea temperatures may enhance recreation and tourism activities by extending the summer season. Although warmer water may introduce HABs and increase more algae (red tide) and jellies, HABs which reduces water quality and the attractiveness of beach and other on the water recreational activities (Hoagland et al. 2002).
- Sea level rise, reduced wind, more severe storms, more winter precipitation and spring runoff may have negative consequences for recreation and tourism. Increased rainfall and runoff

may increase nutrients and other land-based sources of pollution and more frequent overflow from combined storm and wastewater sewer systems, flowing into the sea ([Dorfman and Rosselot 2009](#)). This can compromise water quality, cause algal blooms, deplete oxygen in the sea (hypoxia) and lead to more beach closures. [For example, in 2008 there was a significant increase in beach closures in Rhode Island over 2007. Although there was an increase in water quality sampling, the increase in closures also coincided with higher rainfall during the summer months in 2008 \(Dorfman and Rosselot 2009\).](#)

4. More periods of drought are projected for the summer months. This will make freshwater more scarce and could lead to water use restrictions, [creating difficulty for tourism infrastructure needs](#).

4.5. Recreation and tourism in the “Ocean State” are based on the unique landscape and natural character of the coast. Climate changes that alter the natural character, including coastal habitat, fish and shellfish, and seabirds, will have implications for tourism and recreation. Among the unique coastal habitats that characterize southern Rhode Island are the beaches, lagoons (salt ponds), salt marshes and intertidal communities.

5.6. With increases in sea level and storminess, Rhode Island’s shorelines will change significantly, potentially becoming less attractive [and less accessible](#). ~~Public and private~~ barrier beaches in particular, on the south shore, will be especially vulnerable to increased erosion and [landward](#) migration as sea level rises. Increased storminess will result in increased storm overwash, breaching of barrier beaches and damage to [shoreline real estate and development on beaches and lagoon shores](#). Higher sea level may cause the migration or loss of habitats such as coastal lagoons and tidal salt flats that provide multiple important ecosystem services (Anthony et al. 2009). It can also result in damage or loss to coastal parks, coastal public access points and open space. Finally, salt water intrusion in coastal aquifers that can accompany sea level rise may increase coastal freshwater scarcity [and failure of onsite wastewater treatment](#).

6.7. The network of coastal lagoons, locally referred to as salt ponds, that lie along Rhode Island’s south shore are important shallow marine ecosystems with historically high productivity of commercially important fish and shellfish and provide habitat for resident and migrating shorebirds and water birds. These lagoons are particularly vulnerable to changes associated with accelerated sea level rise, storms and sea surge, temperature increases and runoff from more precipitation. As sea level rise accelerates, the barrier beaches will become narrower and steeper, shortening the length of inlets to the lagoons and increasing exchange with ocean water (Bird 1994).

7.8. Salt marshes are other ecologically important habitats that provide a variety of ecosystem services, such as serving as nurseries and feeding grounds for fish, shellfish, birds, and invertebrates, filtering pollutants from groundwater and runoff, and ~~buffering~~ [protecting](#) adjacent land and infrastructure from storms, erosion, and flooding. Loss of salt marsh habitat will likely occur due to accelerated sea level rise. The loss of salt marshes will negatively impact many shorebirds and commercially important species of fish and shellfish,

allow more pollutants to reach coastal waters, and leave the coastline more vulnerable to storms and erosion (Frumhoff et al. 2007).

8. The retreat of beaches and the shoreline due to accelerated erosion loss and inundation may increase private property litigation. In addition, Phillips and Jones (2006) suggest that the combined impacts of warming, sea level rise and coastal hazards will coincide with falling property values in coastal areas and loss of tourism revenue.

340.2.2 Boating

1. Boating includes but is not limited to recreational boating, sailboat racing, and sea kayaking in the Ocean SAMP area and adjacent waters (see Recreation and Tourism chapter). Additionally, the previous section covers climate change concerns for marine transportation, navigation and related infrastructure, many which also affect recreational boating (see Section 340.1 of this chapter).
2. In general, warmer temperatures and longer boating season are positive impacts of projected climate change for boating (EPA 2008).
3. Projections of greater storm intensity and more nor'easters could cause earlier hauling out of recreational boats. Increased storminess could also make it more difficult to service Block Island by ferry, potentially adversely affecting recreation and tourism opportunities (EPA 2008). Increased storminess and less predictable weather negatively affect planning for regattas and sailboat races and reduces safety at sea. Storminess could also increase the costs of insurance premiums for marine insurance for marinas and recreational vessels.
4. Higher-intensity precipitation can cause more runoff and erosion. This in turn can cause sedimentation and shoaling of waterways, adversely affecting marine navigation (EPA 2008; TRB 2008).
5. Reduced average wind speed decreases the attractiveness of the area for sailing and sailboat racing.
6. Ocean acidification adversely affects some marine life and may ultimately have a detrimental affect on recreational fisheries. As the ocean becomes more acidic, mussels, starfish, and even fish may be adversely impacted. Changes to these populations may affect food web dynamics, and therefore affect fish communities and seabirds as well.

340.2.3 Diving

1. Recreational diving in the Ocean SAMP area includes both offshore diving and shark cage diving. Popular diving locations include historical ship wrecks, interesting benthic communities, and popular shark sites, among others.
2. It is difficult to speculate how climate change will impact diving. Longer summers can be a positive impact, upon diving in extending the season. However, the resulting effects of

climate change on marine life and ocean visibility for diving are unknown. As is the case for boating, more severe storms would be a negative impact.

3. Over the long run, more acidic seas may increase the rate of decay of underwater wrecks that attract recreational divers.

340.2.4 Wildlife Viewing

1. Wildlife viewing includes but is not limited to whale watching, birding (i.e. pelagic, shorebirds), and any other recreational activity whose main goal is to view wildlife. This includes all viewing both offshore and in coastal regions.
2. An increase in air temperature combined with an earlier spring and a later winter will give a longer season for wildlife viewing that occurs during the warm months. The shortened winter months with more precipitation and cloudiness may adversely affect viewing of seals and winter-migrating birds.
4. Barrier beaches in particular, such as Rhode Island's barrier beaches on the south shore, will be especially vulnerable to increased erosion and migration as sea-level rises. The beaches serve as important habitat for shorebirds such as the piping plover and numerous coastal species (USFWS 2010).
5. The impacts of changes in climate change variables~~drivers~~ will affect the number and range of marine mammals and seabirds in the Ocean SAMP area. Some species may become less abundant, and viewing of those will decline. Warm water species that are currently rare may become more abundant.

340.2.5 Cruise Ship Tourism

1. Most cruise ship tourism to Newport is concentrated in the fall. Warmer fall temperatures would have a positive impact on the cruise ship industry.
2. Since cruise ship tourism is concentrated in the fall hurricane season, increased storm intensity could adversely affect cruise ship tourism (See also section 340.1).

340.2.6 Marinas, Yacht Clubs, and Boat Ramps

1. Sea level rise, combined with storms, and heavier winter precipitation and runoff may place some marinas, yacht clubs and boat ramps at risk of inundation, erosion, and storm damage (See also section 340.1). Adaptation actions would require investments that will increase costs of operation.

340.3 Renewable Energy

1. Climate changes could affect the design, construction, delivery and installation, maintenance and operation of wind turbines and related infrastructure. Sea level rise, severe storms and storm surge could damage coastal construction facilities of wind turbine components and adversely affect the delivery of parts by ship. Installation of support structures, foundations, wind towers and wind turbines at sea could be more costly and difficult if climate becomes more unpredictable, and more intense storms and waves reduce windows of opportunity for delivery by boat to the site and installation. Maintenance over the life of the turbines could also be more difficult and costly. More intense storms will fatigue turbines and platforms more rapidly. Given the relatively long life span of wind turbines (about 30 years), design standards of platforms and blades should take future climate projections into account.
2. Although statistically significant decreases in wind speed have been documented on land at T.F. Green (See Section 310.5) however, it is not known how wind speed will change onshore in Rhode Island. In addition, different dynamics exist offshore in the Ocean SAMP area, than those at T.F. Green on the coast of Narragansett Bay. However, U.S. Department of Energy's National Renewable Energy Laboratory mapped the wind resources of Rhode Island at the 50 meters (164 feet), using data provided by AWS TrueWind (See Section 810.3 and Figure 12 in that section), which indicates that wind speed ranges from Excellent to Superb for offshore wind turbines in the Ocean SAMP area.

340.4 Historical and Cultural Assets

Note to Readers: This section will be revisited after the chapter on Historical and Cultural Assets has been drafted

1. Climate change drivers could impact the preservation and maintenance of historical and cultural assets in a variety of ways. Potential impacts include sea level rise and storm surge, which could increase erosion of coastal assets, and more severe storms and ocean acidification could increase damage to submerged assets. Due to the lack of research on the

impacts of climate change upon these assets, these issues will be targeted for future research in the Ocean SAMP area and results will be reported in future versions of this document.

340.4.1 Submerged

1. Decreasing pH levels in seas may increase the rate of corrosion of submerged vessels and other historic and cultural assets on the seabed.

340.4.2 Terrestrial

1. Two important historic assets in the Ocean SAMP region are the Southeast Light and North Light lighthouses on Block Island. Both are highly vulnerable to the effects of sea level rise, storms and sea surge.
2. In 1874, when South East Light was built, it was located approximately 300 feet (90 meters) inland from the edge of the Mohegan Bluffs. However, due to severe erosion of the adjacent bluffs, by 1993 the lighthouse was only approximately 55 feet (17 meters) from the edge of the bluffs. Between August 10 and 28, 1993, Expert House Movers, under the supervision of the Army Corps of Engineers, moved the lighthouse inland 360 feet (110 meters) to a location that geotechnical studies determined will be safe for more than a century (Reynolds, 1997).
3. The location of North Light, at Sandy Point, is also subject to extensive erosion and has been rebuilt four times. The original building was constructed in 1829 on sand and gravel and subject to rapid erosion that washed it out to sea after a only few years. Its replacement, built in 1837 0.25 miles (0.4 kilometers) inland from the first site, was also lost to the sea due to erosion. In 1857, a third lighthouse was built farther inland followed by piers constructed in 1865 to fortify the structure from falling due to erosion. Noting that the structure was still highly vulnerable to coastal inundation, in 1866, Congress appropriated funds to build the fourth structure. The current lighthouse was built in 1867 and although it is 700 feet (210 meters) from the tip of Sandy Point, it is only two feet above mean high water (Lighthouse Friends, 2010).

340.5 Fisheries Resources and Uses

1. As Chapter 5 discusses, commercial and recreational fisheries are important uses of the Ocean SAMP area that add economic, historic and cultural value to Rhode Island. Therefore, climate change impacts to marine fisheries in this area are of great importance.
2. As noted earlier, Rhode Island Sound and Block Island Sound ecosystems are located at the boundary of two bio-geographic provinces. Due to this, the impacts of climate change are of special concern because the fishery is based on a mix of cold- and warm-water species.
3. This section does not cover the impacts of climate change on marine transportation, navigation and related infrastructure for the marine fishery. This is covered in section 340.1.

340.5.1 General Impacts on Marine Fisheries

1. The main climate change drivers impacting fish populations are discussed in the Marine Ecology chapter (section 250.2) and above in section 330.1.3. In addition, climate change impacts upon disease and invasive species are covered above in section 330.3.1 and 330.3.2, respectively. Changes in temperature, circulation, salinity, and food availability affect the spawning and distribution of fish and may cause changes in preferred fishing grounds for certain stocks (Murawski 1993).
2. As discussed in Chapter 5, fishers who target the Ocean SAMP area, often use a variety of gear types and are accustomed to modifying gear to target different stocks (for example, during different seasons). Therefore, if the types of fish in the Ocean SAMP area change, fishers may be able to adapt their fishing practices accordingly.
3. An exception is the lobster fishery. Lobstermen typically fish almost exclusively for only lobster. With a northern movement of the species with increased water temperatures (as discussed in Section 330.1.2), and increased incidence of shell disease (see Section 330.3.1), lobster fishing is likely to decline.
4. As species move and targeted fish stocks change, there could be significant impacts upon fishers and fisheries in the Ocean SAMP area. Potential impacts include (1) increased time and cost to travel to fishing grounds, (2) possibly reduced catch per unit effort, (3) possibly reduced market value of more abundant southern species compared with less abundant northern species, and (4) costs of altering gear.

340.5.2 Fisheries Most Likely to be Impacted by Climate Change

1. Species that are at or near the southern extent of their range in the Ocean SAMP area are likely to move north, decreasing in abundance and/or extent of time in which they can be caught by fishers in the Ocean SAMP area (Hare et al. 2010; Perry et al. 2005). Commercially valuable species most likely to be impacted in this way include:
 - American lobster (*Homarus americanus*)
 - Atlantic cod (*Gadus morhua*)
 - Silver hake (*Merluccius bilinearis*)
2. Species that are at or near the northern extent of their range in the Ocean SAMP area are likely to move north, increasing in abundance and/or extent of time in which they can be caught within the Ocean SAMP waters (Hare et al. 2010). The species most likely affected in this way include:
 - Atlantic croaker (*Micropogonias undulates*) (Hare et al. 2007)
 - Black sea bass (*Centropristis striata*)

- Butterfish (*Peprilus triacanthus*)
- Scup (*Stenotomus chrysops*)
- Summer flounder (*Paralichthys dentatus*)

3. Warming sea temperatures in the Ocean SAMP area are likely to bring more fish species that are primarily, but not solely, targeted by recreational fishers. With increasing populations of these species, some of them may become targeted by commercial fisheries more often. Popular recreational fisheries species that are likely to occur more often include:

- Atlantic bonito (*Sarda sarda*)
- Bluefish (*Pomatomus saltatrix*)
- False albacore (*Euthynnus alletteratus*)
- Striped bass (*Morone saxatilis*)
- Yellowfin tuna (*Thunnus albacares*)

~~3. With increasing populations of these species, some of them may become targeted by commercial fisheries more often.~~

340.6 Future Uses

1. The same wide array of climate changes and impacts would fall on potential future uses of the Ocean SAMP area and would need to be considered. Some potential future uses are climate sensitive (e.g. offshore aquaculture, protected areas, and biofouling) and potential impacts could be adverse and positive (See Chapter 9 for further discussion of future uses). Due to the time sensitive nature of climate change drivers, these impacts would have to be considered when these uses are proposed in order to consider the effects as accurately as possible.

Section 350

Climate Change Policy

1. The Coastal Resources Management Council (“Council”) developed and adopted on January 15, 2008 Section 145 Climate and Sea Level Rise Policy. This policy is part of the federally adopted Rhode Island Coastal Resource Management Program (RICRMP). This is the controlling provision for the upland areas within the Council’s jurisdiction and the immediate shoreline areas and seaward to a distance of 500 feet offshore. Section 350 is intended to be the controlling policy for the ocean waters from beyond the 500 foot mark out to the three mile limit. Below is section 145. C. Policies from the currently adopted RICRMP.

145. C Policies:

- a. The Council will review its policies, plans and regulations to proactively plan for and adapt to climate change and sea level rise. The Council will integrate climate change and sea level rise scenarios into its operations to prepare Rhode Island for these new, evolving conditions and make our coastal areas more resilient.
- b. The Council’s sea level rise policies are based upon the CRMC’s legislative mandate to preserve, protect, and where possible, restore the coastal resources of the state through comprehensive and coordinated long-range planning.
- c. The Council recognizes that sea level rise is ongoing and its foremost concern is the accelerated rate of rise and the associated risks to Rhode Island coastal areas today and in the future. Accordingly, for planning and management purposes, it is the Council’s policy to accommodate a base rate of expected 3 to 5 foot rise in sea level by 2100 in the siting, design, and implementation of public and private coastal activities and to insure proactive stewardship of coastal ecosystems under these changing conditions. It should be noted that the 3-5 ft. rate of sea level rise assumption embedded in this policy is relatively narrow and low. The Council recognizes that the lower the sea level rise estimate used, the greater the risk that policies and efforts to adapt sea level rise and climate change will prove to be inadequate. Therefore, the policies of the Council may take into account different risk tolerances for differing types of public and private coastal activities. In addition, this long term sea level change base rate will be revisited by the Council periodically to address new scientific evidence.

350.1 General Policies/recommendations

~~1. The Council recognizes that the changes brought by climate change are likely to result in alteration of the marine ecology and human uses affecting the Ocean SAMP area. The Council, therefore, supports the policy of increasing offshore renewable energy production in Rhode Island as a means of mitigating the potential effects of global climate change.~~

~~1.2. The Council recognizes that the changes brought by climate change are likely to result in alteration of the marine ecology and human uses affecting the Ocean SAMP area.~~

Accordingly, the Council shall incorporate climate change planning and adaptation into policy and standards in all areas of its jurisdiction of the Ocean SAMP and its associated land-based infrastructure to proactively plan for and adapt to climate change impacts of increased storminess, temperature change, in addition to accelerated sea level rise. For example, when evaluating Ocean SAMP area projects and uses, the Council will carefully consider how climate change could affect their future feasibility, safety and effectiveness. When evaluating new or intensified uses within the Ocean SAMP area, the Council will consider predicted impacts of climate change especially upon sensitive habitats, most notably spawning and nursery grounds, of particular importance to targeted species of finfish, shellfish and crustaceans.

~~2. The level of agreement in the scientific community that climate change is occurring is unprecedented. The impacts that are resulting from current changes and the potential impacts that could result from projected changes are significant enough to warrant the Council to give careful consideration of these in planning and regulatory actions. The Council also recognizes that there are several actions that can be taken in the face of climate change (i.e. increased freeboard on structures to accommodate sea level rise or hurricane floods) that are worthwhile and will benefit the State of Rhode Island, regardless of future climate changes or the timeframe of the occurrence of climate change projections.~~

~~3. Consistent with the current Coastal Resources Management Plan (CRMP) policy on sea level rise, the Council will review its policies, plans and regulations related to the activities within its jurisdiction of the Ocean SAMP and its associated land-based infrastructure to proactively plan for and adapt to climate change impacts of increased storminess, temperature change, and acidification in addition to accelerated sea level rise. The Council will continue to review applicable federal, state, and local policy regarding climate change in efforts to inform Rhode Island's Coastal Resources Management Program.~~

~~4.~~

~~4. The Council will seek funding and partnerships for assessing the vulnerability and developing construction standards of key infrastructure associated with the Ocean SAMP, to sea level rise, storms, sea surge, and flooding. Infrastructure includes, but is not limited to critical marine industry facilities, such as ports, harbors, marinas, docks, jetties and breakwaters.~~

3. The Council will convene a panel of scientists, biannually, to advise on findings of current climate science for the region and the implications for Rhode Island's coastal and offshore regions, as well as the possible management ramifications. The horizon for evaluation and planning needs to include both the short term (10 years) and longer term (50 years). The Science Advisory Panel for Climate Change will provide the Council with expertise on the most current global climate change related science, monitoring, policy, and development design standards relevant to activities within its jurisdiction of the Ocean SAMP and its associated land-based infrastructure to proactively plan for and adapt to climate change impacts of increased storminess, temperature change, and acidification in addition to accelerated sea level rise.

4. The Council will prohibit those land-based and offshore development projects which based on a sea level rise scenario analysis will threaten public safety or not perform as designed resulting in significant environmental impacts. The U.S. Army Corps of Engineers (ACOE) has developed and is implementing design and construction standards

that considers impacts from sea level rise into consideration. These standards and other scenario analysis should be applied to determine sea level rise impacts.

5. The Council endorses the application of enhanced building standards in the design phase of rebuilding coastal infrastructure associated with the Ocean SAMP area, including port facilities, docks, and bridges that ships must pass under.
6. The Council endorses the development of design standards for marine platforms that account for climate change projections on wind speed, storm intensity and frequency, and wave conditions and will work with the Mineral Management Service, Department of Interior, Department of Energy and the Army Corps of Engineers to develop a set of standards that can then be applied in Rhode Island projects. The Council will re-assess coastal infrastructure and seaworthy marine structure building standards periodically not only for sea level rise, but also for other climate changes including more intense storms, increased wave action, and increased pH in the sea.
- ~~5. The Council will convene a Science Advisory Committee (SAC) on Climate Change to design a data collection program, monitor trends in climate indicators (i.e. temperature, pH, sea level), monitor impacts of climate change, advise on adaptation options, and provide feedback to project proposals related to climate change implications within the Ocean SAMP area and associated coastal infrastructure. The SAC will advise the Council on modeling needs and opportunities that address downscaled climate data projections and impacts. Such models could support analysis of cumulative impacts of climate change on specific project proposals (i.e. wind turbines) over the design life. The SAC will engage with regional scientists (i.e. Northeastern Regional Association of Coastal Ocean Observing Systems, Northeast Regional Ocean Council and NOAA North Atlantic Regional Team) and coordinate monitoring with adjacent states to understand changes in the boundaries of bioregions; invasive species; fish, marine mammal and seabird populations as well as currents, temperature, and storm surge.~~
- ~~6. The Council will encourage the establishment of a Climate Change Commission to evaluate the risks and develop strategies to address impacts and opportunities for adaptation and mitigation related to Rhode Island's coastal and offshore resources. The horizon for evaluation and planning needs to include both the short term (10 years) and longer term (50 years). Strategies include, but are not limited to, the preparation of state agency plans for ports, state owned facilities, and critical infrastructure within the coastal zone; mainstreaming climate change within municipal comprehensive planning and harbor management plans. Within the Northeast region, the Council will support and participate in efforts related to climate mitigation and adaptation strategies, and promote regional cooperation in planning and policy reform.~~
7. The Council supports public awareness and interpretation programs to increase public understanding of climate change and how it affects the ecology and uses of the Ocean SAMP area.

~~8. The Council supports adaptive management of the Ocean SAMP area and associated coastal infrastructure. As part of adaptive management, the Council will review its policies and standards on a bi-annual basis to incorporate current climate change data and projections. This will also provide the Council with an opportunity to look at potential future uses of the Ocean SAMP area, and to incorporate appropriate standards and policies.~~

350.2 Regulatory Standards

~~1. Feasibility studies, designs and environmental impact assessments will incorporate climate change projections and implications for the life of the project. The Council recognizes the need for more robust infrastructure design and materials to withstand higher sea level and shall work together with appropriate agencies to prepare standards and regulations for the implementation of the State's sea level rise policy. The Council therefore endorses the application of enhanced building standards in the design phase of rebuilding coastal infrastructure associated with the Ocean SAMP area, including port facilities, docks, and bridges that ships must pass under.~~

~~2.—~~

2.1. Public infrastructure projects shall provide an analysis of historic and project (medium and high) rates of sea level rise and shall at minimum assess the risks for each alternative on public safety and environmental impacts resulting from the project.

~~3.~~

~~4. The Council will prohibit those land-based and offshore development projects. Public infrastructure projects shall provide an analysis of historic and projected (medium and high) rates of sea level rise and shall at minimum assess the risks for each alternative on public safety and environmental impacts resulting from the project. Those projects which based on the scenario analysis will threaten public safety or not perform as designed resulting in significant environmental impacts will not be permitted. The U.S. Army Corps of Engineers (ACOE) has developed and is implementing design and construction standards for land-based infrastructure that it is responsible for, to take the impacts from sea level rise into consideration. The Council believes that public infrastructure in general needs to be held the same criteria, and provide for a seamless process resulting in more efficient permitting.~~

~~5.—~~

~~6. The Council will re-assess coastal infrastructure and seaworthy marine structure building standards periodically not only for sea level rise, but also for other climate changes including more intense storms, increased wave action, and increased pH in the sea. The Council endorses the development of design standards for marine platforms that account for climate change projections on wind speed, storm intensity and frequency, and wave conditions and will work with the Mineral Management Service, Department of Interior, Department of Energy and the Army Corps of Engineers to develop a set of standards.~~

Section 360

Literature Cited

- Agnew, M.D., and ~~D.~~Viner, D. 2001. Potential impacts of climate change on international tourism. *Tourism and Hospitality Research*, 3(~~1~~):37-60.
- Alley, R.B., ~~J.~~ Marotzke, J., ~~W.D.~~ Nordhaus, W.D., ~~J.T.~~ Overpeck, J.T., ~~D.M.~~ Peteet, D.M., ~~R.A.~~ Pielke Jr., R.A., ~~R.T.~~ Pierrehumbert, R.T., ~~P.B.~~ Rhines, P.B., ~~T.F.~~ Stocker, T.F., ~~L.D.~~ Talley, L.D., ~~J.M.~~ Wallace, J.M. 2003. Abrupt Climate Change. *Science*: 299(~~5615~~), pp.:2005-2010.
- Allison, I., Bindoff, N.L., Bindschadler, R.A., Cox, P.M., de Noblet, N., England, M.H., Francis, J.E., Gruber, N., Haywood, A.M., Karoly, D.J., Kaser, G., Le Quéré, C., Lenton, T.M., Mann, M.E., McNeil, B.I., Pitman, A.J., Rahmstorf, S., Rignot, E. Schellnhuber, H.J, Schneider, S.H., Sherwood, S.C., Somerville, R.C.J., Steffen, K., Steig, E.J., Visbeck, M. and A.J. Weaver. 2009. The Copenhagen Diagnosis: Updating the World on the Latest Climate Science. The University of New South Wales Climate Change Research Centre (CCRC). Sydney, Australia. 60pp.
- Anthony, A., Atwood, J., August, P., Byron, C., Cobb, S., Foster., Fry, C., Gold, A., Hagos, K., Heffner, L., Kellog, D.O., Lessis-Dibble, K., Opaluch, J., Oviatt, C., Pfeiffer-Herbert, A., Rohr, N., Smith, L., Smythe, T., Swift, J., and Vinhateiro, N. 2009. Coastal lagoons and climate change: ecological and social ramifications in U.S. Atlantic and Gulf coast ecosystems. *Ecology and Society* 14(~~1~~):—8. ~~Online URL:~~ <http://www.ecologyandsociety.org/vol14/iss1/art8>.
- Attrill, M.J., ~~and M.~~Power, M. 2002. Climatic influence on a marine fish assemblage. *Nature* ~~(London)~~.417(~~6886~~):275-278.
- Baede, A. P. M. (Ed.). ~~2007(n.d.)~~. IPCC Annex I: Glossary ~~-~~ Glossary of Terms used in the IPCC Fourth Assessment Report. Retrieved December 14, 2009. Available at: <http://www.ipcc.ch/pdf/glossary/ar4-wg1.pdf> Accessed 14 December 2009.
- Beardsley, R.C., Chapman, D.C., Brinks, K.H., Ramp, S.R., and Shlitz, R. 1985. The Nantucket Shoals Flux Experiment (NSFE79), I, A basic description of the current and temperature variability. *Journal of Physical Oceanography* 15:713-748.
- Beaugrand, G., Reid, P.~~hilip~~ C., Ibanez, F., Alistair Lindley, J., and Edwards, M. 2002. Reorganization of North Atlantic marine copepod biodiversity and climate. *Science* ~~e~~. 296(~~5573~~):1692-1694.
- Bender, M., ~~T.~~ Knutson, T., ~~R.~~ Tuleya, R., ~~J.~~ Sirutis, J., ~~G.~~ Vecchi, G., ~~S.~~ Garner, S. and ~~I.~~ Held, I. 2010. Modeled Impact of Anthropogenic Warming on the Frequency of Intense Atlantic Hurricanes. *Science*. 327(~~5964~~):454-458.

Bird, E.C.F. 1994. Physical setting and geomorphology of coastal lagoons. ~~In: B. Kjerfve, B. (Ed.).~~ *Coastal Lagoon Processes*. Elsevier, Amsterdam, The Netherlands. pp. 9-40.

Bricker, S.B., Longstaff, B., Dennison, W., Jones, A., Boicourt, K., Wicks, C., and Woerner, J. 2008. Effects of nutrient enrichment in the ~~nationsnation's~~ estuaries: A decade of change. *Harmful Algae* 8(1): 21-32.

Burgents, J.E., Burnett, K.G. and ~~L.E. Burnett, L.E.~~. 2005. Effects of hypoxia and hypercapnic hypoxia on the localization and the elimination of *Vibrio campbelli* in *Litopenaeus vannamei*, the Pacific white shrimp. *Biological Bulletin*: 208(3):159-168.

Caldeira, K. and ~~M.E. Wickett, M.E.~~ 2003. Anthropogenic carbon and ocean pH. *Nature*: 425(6956):365.

Canadell, J.G., LeQuéré, C., Raupach, M.R., Field, C.B., Buitenhuis, E.T., Ciais, P., Conway, T.J., Gillett, N.P., Houghton, R.A. and ~~G. Marland, G.~~ 2007. Contributions to accelerating atmospheric CO₂ growth from economic activity, carbon intensity, and efficiency of natural sinks. *Proceedings of the National Academy of Sciences*: 104(47):18866-18870.

Carlton, J.T. 2010. *Prospective Marine and Estuarine Invasions of the New England Coast*. In preparation. March 2010.

Castro, K.M., Factor, J.R., Angell, T. and ~~D.R. Landers Jr., D.R.~~ 2006. The conceptual approach to lobster shell disease revisited. *Journal of Crustacean Biology*: 26(4):646-660.

Cazenave, A., Dominh, K., Guinehut, S., Berthier, E., Llovel, W., Ramillien, G., Ablain, M., and ~~G. Larnicol, G.~~ 2009. Sea level budget over 2003–2008: a reevaluation from GRACE space gravimetry, satellite altimetry and Argo. *Global and Planetary Change*: 65(1-2):83-88.

Cheung, W.W.L., Lam, V.W.Y., Sarmiento, J.L., Kearney, K., Watson, R., and ~~D. Pauly, D.~~ 2009. Projecting global marine biodiversity impacts under climate change scenarios. *Fish and Fisheries*: 10(3):235-251.

Church, J.A. and ~~N.J. White, N.J.~~ 2006. A 20th century acceleration in global sea-level rise. *Geophysical Research Letters*: 33: L01602.

~~Coastal Resources Management Council (CRMC). 2009. Section 145.C.3.~~

Coastal Resources Management Council (CRMC). 2007. *The Urban Coastal Greenways Policy For the Metro Bay Region; Cranston, East Providence, Pawtucket, and Providence; An Amendment to the Providence Harbor Special Area Management Plan*. The University of Rhode Island Coastal Resources Center and The Rhode Island Sea Grant College Program. Narragansett, RI.

- Coastal Resources Management Council (CRMC). 2009. Section 145.C.3 – Climate Change and Sea Level Rise. In: *The State of Rhode Island, Coastal Resources Management Program – As Amended*. pp. 1-5, Adopted 1/15/2008, Effective 3/27/2008. Coastal Resources Management Council, The Rhode Island Sea Grant College Program, Narragansett, RI.
- Cobb, J.S. 2006. What's going on with our lobsters? *41°N A Publication of Rhode Island Sea Grant and Land Grant Programs* 3(4):19-24.
- Codiga, D.L., and Ullman, D.S. 2010–draft of January 2010–Characterizing the physical oceanography of coastal waters off Rhode Island: Literature review, available observation, and a representative model simulation. Final Report Part 1 for Rhode Island Ocean Special Area Management Plan. University of Rhode Island, Narragansett, RI.
- Collie, J. In prep. Long-term data reveal climate forcing the Rhode Island Sound fish community structure. In: Sound Connections: The Science of Rhode Island and Block Island Sounds. Proceedings of the 7th Annuals Ronald C. Baird Sea Grant Science Symposium. Rhode Island Sea Grant, Narragansett, Rhode Island. October 2008.
- Collie, J.S., Wood, A.D. and ~~H.P.~~Jeffries, H.P.. 2008. Long-term shifts in the species composition of a coastal fish community. *Canadian Journal of Fisheries and Aquatic Sciences*: 65:1352-1365.
- Cook, T., Folli, M, Kicnk, J., Ford, S. and ~~J.~~Miller, J. 1998. The relationship between increasing sea-surface temperatures and northward spread of *Perkinsus marinus* (Dermo) disease epizootics in oysters. *Estuarine, Coastal and Shelf Science* :46:587-597.
- Cooley, S.R. and ~~S.C.~~Doney, S.C.. 2009. Anticipating Ocean Acidification's Economic Consequences for Commercial Fisheries. *Environmental Research Letters*: 4:~~02407-02414~~, 8 pp.
- Costello, J.H., Sullivan, B.K. and ~~D.J.~~ Gifford, D.J. 2006. A physical–biological interaction underlying variable phenological responses to climate change by coastal zooplankton. *Journal of Plankton Research*: 28(~~11~~):1099-1105.
- Crick, H. 2004. The Impact of Climate Change on Birds. *Ibis* ,~~Vol.~~146 (Suppl. 1),~~pp.~~: 48-56.
- Daunt, F., Wanless, S., Peters, G., Benvenuti, S., Sharples, J., Gremillet, D. ~~and~~& Scott, B. 2006. Impacts of oceanography on the foraging dynamics of seabirds in the North Sea. In: *Top predators in marine ecosystems: their role in monitoring and management*. pp. 177-190. (eds ~~I.L.~~Boyd, I.L., ~~S.~~Wanless, S. ~~and~~& ~~K.~~Camphuysen, K., (eds.)~~.~~ Cambridge University Press, Cambridge, MA. ~~pp.~~177-190.
- Delworth, T.L. and ~~K.W.~~Dixon, K.W. 2000. Implications of the recent trend in the Arctic/North Atlantic Oscillation for the North Atlantic thermohaline circulation. *Journal of Climate* 13:3721-3727.

- Delworth, T.L. and ~~M.E.~~ Mann, M.E. 2000. Observed and simulated multidecadal variability in the Northern Hemisphere. *Climate Dynamics* 16:661-676.
- Domingues, C. M., Church, J.A., White, N.J., Glecker, P.J., Wijffels, S.E., Barker, P.M. and Dunn, J.R. et al. 2008. Improved estimates of upper-ocean warming and multi-decadal sea-level rise. *Nature* 453:1090-1093.
- Dorfman, M. and Rosselot, K.S. 2009. Testing the Waters – A Guide to Water Quality at Vacation Beaches, 19th Edition. July 2009. Natural Resources Defense Council, New York, NY. pp 453.
- Drinkwater, K. 2005. The response of Atlantic cod (*Gadus morhua*) to future climate change. *ICES Journal of Marine Science* 62:1327-1337.
- Durant, J.M., Stenseth, N.C., Anker-Nilssen, T., Harris, M.P., Thompson, P.M. and Wanless, S. 2004. Marine birds and climate fluctuations in the North Atlantic. In: *Marine ecosystems and climate variation: the North Atlantic region*, pp. 95-105. (eds N.C. Stenseth, N.C., G. Ottersen, G.J.W. Hurrell, J.W., & A. Belgrano, A.(eds.), pp. 95-105. Oxford University Press, New York, NY. Oxford.
- East Providence. 2002. Strategy for Reducing Risk from Natural Hazards in East Providence, Rhode Island: A Multi-Hazard Mitigation Strategy.
- Ecosystem Assessment Program (EAP). 2009. Ecosystem Assessment Report for the Northeast U.S. Continental Shelf Large Marine Ecosystem. US Dept Commerce, Northeast Fish Sci Cent Ref Doc. 09-11; 61p. Available online at: <http://www.nefsc.noaa.gov/nefsc/publications>
- Emanuel, K. 2005. Increasing destructiveness of tropical cyclones over the past 30 years. *Nature* 436:686–688.
- Emanuel, K., Sundararajan, R. and ~~J.~~Williams, J. 2008. Hurricanes and global warming: results from downscaling IPCC AR4 simulations. *Bulletin of the American Meteorological Society* 89:347-367.
- Fabry, V.J., Seibel, B.A., Feely, F.A. and ~~J.C.~~Orr, J.C. 2008. Impacts of ocean acidification on marine fauna and ecosystem processes. *ICES Journal of Maine Science* 65:414-432.
- Feely, R.A., Sabine, C.L., Lee, K., Berelson, W., Kleypas, J., Fabry, V.J. and ~~F.J.~~Millero, F.J. 2004. Impact of anthropogenic CO₂ on the CaCO₃ system in the ocean. *Science* 305:362-366.
- Ford, S. 1996. Range extension by the oyster parasite *Perkinsus marinus* into the northeastern United States: response to climate change? *Journal of Shellfish Research* 15(4):45-56.

- Frederiksen, M., Edwards, M., Richardson, A. J., Halliday, N. C. and Wanless, S. 2006. From plankton to top predators: bottom-up control of a marine food web across four trophic levels. *Journal of Animal Ecology*; 75:1259-1268.
- Frederiksen, M., Harris, M.P., Daunt, F., Rothery, P. and Wanless, S. 2004. Scale-dependent climate signals drive breeding phenology of three seabird species. *Global Change Biology* 10(7):1214-1221.
- Frumhoff, P., McCarthy, J., Melillo, J., Moser, S. and ~~D.~~Wuebbles, D. 2007. *Confronting Climate Change in the U.S. Northeast: Science, Impacts, and Solutions*. Synthesis report of the Northeast Climate Impacts Assessment (NECIA). 160 pp. Union of Concerned Scientists (UCS), Cambridge, MA; Union of Concerned Scientists (UCS). 160 pp.
- Fuentes, M.M.P.B., ~~C.J.~~Limpus, C.J., ~~M.~~Hamann, M., and ~~J.~~Dawson, J. 2009a. Potential impacts of projected sea level rise to sea turtle rookeries. *Aquatic conservation: marine freshwater ecosystems*. ~~Vol. 20; (2), pp.~~132-139.
- Fuentes M.M.P.B., ~~J.A.~~Maynard, J.A., ~~M.~~Guinea, M., ~~I.P.~~Bell, I.P., ~~P.J.~~Werdell, P.J., and ~~M.~~Hamann, M. 2009b. Proxy indicators of sand temperature help project impacts of global warming on sea turtles. *Endangered Species Research Journal*. ~~Vol. 9; pp.~~33-40.
- Fulweiler, R.W., Nixon, S.W., Buckley, B.A., and ~~S.L.~~Granger, S.L. 2007. Reversal of the net dinitrogen gas flux in coastal marine sediments. *Nature*: 448:180-182.
- Genner, M.J., Sims, D.W., Wearmouth, V.J., Southhall, E.J., Southward, A.J. Henderson, P.A., and ~~S.J.~~Hawkings, S.J. 2004. Regional climatic warming drives long-term community changes of British marine fish. *Proceedings of the Royal Society of London B: Biological Sciences*: 271:655-661.
- Grebmeier, J., Overland, J., Moore, S., Farley, E., Carmack, E., Cooper, L., Frey, K., Helle, J., McLaughlin, F. and ~~S.~~McNutt, S. 2006. A major ecosystem shift in the northern Bering Sea. *Science*: 311:1461-1464.
- Greene, C.H. and ~~A.J.~~Pershing, A.J. 2004. Climate and the Conservation Biology of North Atlantic Right Whales: The Right Whale at the Wrong Time? *Frontiers in Ecology and the Environment*: 2(4):29-34.
- Greene, G.H., ~~A.J.~~Pershing, A.J., ~~R.D.~~Kenney, R.D., and ~~J.W.~~Jossi, J.W. 2003. Impact of climate variability on the recovery of endangered North Atlantic right whales. *Oceanography* 16(4):98-103.
- Glynn, P.W. 1988. El Nino-Southern Oscillation. *Annual Review of Ecology and Systematics* 19: 309-345.

- Hare, J.A., ~~M.A.~~ Alexander, ~~M.A.~~, ~~M.J.~~ Fogarty, ~~M.J.~~, ~~E.H.~~ Williams, ~~E.H.~~, and ~~J.D.~~ Scott, ~~J.D.~~. 2010. Forecasting the dynamics of a coastal fishery species using a coupled climate-population model. *Ecological Applications* 20(2):452-464.
- Hare, J. and ~~K.~~ Able, ~~K.~~. 2007. Mechanistic links between climate and fisheries along the east coast of the United States: explaining population outbursts of Atlantic croaker (*Micropogonias undulates*). *Fisheries Oceanography*: 16:31-45.
- Harley, C.D.G., Hughes, A.R., Hultgren, K.M., Miner, B.G., Sorte, C.J.B., Thornber, C.S., Rodriguez, L.F., Tomanek, L. and ~~S.L.~~ Williams, ~~S.L.~~. 2006. The impacts of climate change in coastal marine systems. *Ecology Letters*: 9:228-241.
- Harvell, C.D., Mitchell, C.E., Ward, J.R., Altizer, S., Dobson, A.P., Ostfeld, R.S. and ~~M.D.~~ Samuel, ~~M.D.~~. 2002. Climate warming and disease risks for terrestrial and marine biota. *Science*: 296:2158-2162.
- Hastings, A. and ~~D.B.~~ Wysham, ~~D.B.~~. 2010. Regime shifts in ecological systems can occur with no warning. *Ecology Letters*. ~~February 2010. 13:464-472.~~ Available at: <http://www3.interscience.wiley.com/journal/123276879/abstract?CRETRY=1&SRETRY=0>
- Hawkes, L.A., ~~A.C.~~ Broderick, ~~A.C.~~, ~~M.H.~~ Godfrey, ~~M.H.~~, and ~~B.J.~~ Godley, ~~B.J.~~. 2007. Investigating the potential impacts of climate change on a marine turtle population. *Global Change Biology*: ~~Vol. 13~~: ~~pp.~~923-032.
- Hays, G.C., ~~J.S.~~ Axhworth, ~~J.S.~~, ~~M.J.~~ Barnsley, ~~M.J.~~, ~~A.C.~~ Broderick, ~~A.C.~~, ~~D.R.~~ Emery, ~~D.R.~~, ~~B.J.~~ Godley, ~~B.J.~~, ~~A.~~ Henwood, ~~A.~~ and ~~E.L.~~ Jones, ~~E.L.~~. 2001. The importance of sand albedo for the thermal conditions on sea turtle nesting beaches. *Oikos*: ~~Vol. 93~~: ~~pp.~~87-94.
- [Hoagland, P., Anderson, D.M., Kaoru, Y. and A.W. White. 2002. The Economic Effects of Harmful Algal Blooms in the United States: Estimates, Assessment Issues, and Information Needs. *Estuaries* 25:819-837.](#)
- Holland, G. 2009. Climate change and extreme weather. [In: IOP Conference Series: Earth and Environmental Sciences Climate Change: Global Risks, Challenges and Decisions, 10-12 March 2009, Volume 6:092007. IOP Conference Series: Earth and Environmental Sciences, Copenhagen, Denmark. 6: 092007. Available online at: http://www.iop.org/EJ/toc/1755-1315/6/9](#)
- Holland, G.J., and Webster, P.J. 2007. Heightened tropical cyclone activity in the North Atlantic: Natural variability or climate trend? *Philosophical Transactions of The Royal Society A* ~~Vol. 365, No. 1860~~:2695-2716.
- Holman, J.D., Burnett, K.G. and ~~L.E.~~ Burnett, ~~L.E.~~. 2004. Effects of hypercapnic hypoxia on the clearance of *Vibrio campbelli* in the Atlantic blue crab, *Callinectes sapidus rathbun*. *Biological Bulletin*: 206:188-196.

- Horton, R., Herweijer, C., Rosenzweig, C., Liu, J., Gornitz, V. and Ruane, A.C. 2008. Sea level rise projections for current generation CGCMs based on the semi-empirical method. *Geophysical Research Letters*: 35, L02715.
- Hoyos, C.D., Agudelo, P.A., Webster P.J. and ~~J.A.~~ Curry, J.A. 2006. Deconvolution of the factors contributing to the increase in global hurricane intensity. *Science*: 312:94-97.
- Hurrell, J.W. 1995. Transient eddy forcing of the rotational flow during northern winter. *Journal Atmospheric Science* 52: 2286-2301.
- Intergovernmental Panel on Climate Change (IPCC). 2007. *Contribution of Working Group I to the Fourth Assessment Report of the Intergovernmental Panel on Climate Change, 2007 - The Physical Science Basis. Available online at: <http://www.ipcc.ch>* Solomon, S., Qin, D., Manning, M., Chen, Z., Marquis, M., Averyt, K.B., Tignor, M., and Miller, H.L. (eds.). Cambridge University Press, Cambridge, UK.
- Intergovernmental Panel on Climate Change (IPCC). 2001. *Chapter 6 - Coastal Zones and Marine Ecosystems. Contribution of Working Group II to the Third Assessment Report of the Intergovernmental Panel on Climate Change.* James J. McCarthy, J.J., Osvaldo F. Canziani, O.F., Neil A. Leary, N.A., David J. Dokken, D.J. and Kasey S. White, K.S. (eds.), Cambridge University Press, Cambridge, UK., pp 1000
- Jackson, J.B.C., Kirby, M.X., Berger, W.H., Bjorndal, K.A., Botsford, L.W., Bourque, B.J., Bradbury, R.H., Cooke, R., Erlandson, J., Estes, J.A., Hughes, T.P., Kidwell, S., Lange, C.B., Lenihan, H.S., Pandolfi, J.M., Peterson, C.H., Steneck, R.S., Tegner, M.J. and ~~R.R.~~ Warner, R.R. 2001. Historical overfishing and the recent collapse of coastal ecosystems. *Science* 293:629-637.
- Jeffries, H.P 2001. Rhode Island's ever changing Narragansett Bay. *Maritimes*: 41:1-5.
- Jeffries, H.P. and ~~M.~~ Terceiro, M. 1985. Cycle of changing abundances in the fishes of Narragansett Bay. *Marine Ecology Progress Series*: 25:239-244.
- Jenouvrier, S., ~~J.C.~~ Thibault, J.C., ~~A.V.~~ Llefont, A.V., ~~P.~~ Vidal, P., ~~D.~~ Ristow, D., ~~J.L.~~ Mougin, J.L., ~~P.~~ Bricchetti, P., ~~J.J.~~ Borg, J.J., and ~~V.~~ Bretagnolle, V. 2009. Global climate patterns explain range-wide synchronicity in survival of a migratory seabird. *Global Change Biology* 15:268-279
- Kaschner, K., ~~R.~~ Watson, R., ~~A.~~ Trites, A., and ~~D.~~ Pauly, D. 2006. Mapping World-wide Distributions of Marine Mammal Species using a Relative Environmental suitability (RES) Model. *Marine Ecology Progress Series*, 316, pp:285-310.
- Keller, A., Oviatt, C., Walker, H. and ~~J.~~ Hawk, J. 1999. Predicted impacts of elevated temperature on the magnitude of the winter-spring phytoplankton bloom in temperate coastal waters: a mesocosm study. *Limnology and Oceanography*: 44(2):344-356.

- Kennedy, V.S., Willley, R., Kieypas, J.A., Cowen, J.H., Jr., and Hare, S.R. 2002. *Coastal and marine ecosystems and global climate change: Potential effects on U.S. resources*. Pew Center on Global Climate Change, August 2002. [Arlington, VA. http://www.pewclimate.org/global-warming-in-depth/all-reports/coastal_and_marine_ecosystems](http://www.pewclimate.org/global-warming-in-depth/all-reports/coastal_and_marine_ecosystems)
- Kenney, R.D., ~~M.~~Payne, P.M., ~~D.~~ Heinemann, D.W., and ~~H.~~Winn, H.E. 1996. Shifts in Northeast Shelf Crustacean Distributions Relative to Trends in Gulf of Maine/Georges Bank Finfish Abundance. *In: The Northeast Shelf Ecosystem: Assessment, Sustainability and Management*, pp. 169-196. ~~Sherman, K., Jaworski, N.A., and Smayda, T.J. K. Sherman et al.~~ (eds.), [Blackwell Science, Cambridge, MA](#), ~~Blackwell Science, 169-196.~~
- Kenney, R.D. 2007. Right whales and climate change: Facing the prospect of a greenhouse future. ~~Pp. 436-459~~ *In: The Urban Whale: North Atlantic Right Whales at the Crossroads*, pp. 436-459. ~~S.D. Kraus, S.D. and R.M. Rolland, R.M.~~ (eds). ~~The Urban Whale: North Atlantic Right Whales at the Crossroads~~. Harvard University Press, Cambridge, MA.
- Kenney, R.D. and ~~K.~~Vigness-Raposa, K. 2009. *Marine Mammals and Sea Turtles of Narragansett Bay, Block Island Sound, Rhode Island Sound, and Nearby Waters: An Analysis of Existing Data for the Rhode Island Ocean Special Area Management Plan*. Draft Technical Report, Graduate School of Oceanography, University of Rhode Island, May 31, 2009.
- Kirby, R., Beaugrand, G., Lindley, J., Richardson, A., Edwards, M. and ~~P.~~Reid, P. 2007. Climate effects and benthic-pelagic coupling in the North Sea. *Marine Ecology Progress Series*: 330:31-38.
- Kirshen, P., Watson, C., Douglass, E., Gontz, A., Lee, J. and ~~Y.~~Tian, Y. 2008. Coastal flooding in the northeastern United States due to climate change. *Mitigation and Adaptation Strategies for Global Change*: 13(~~5-6~~):437-451.
- Kling, ~~D.~~avid and ~~James N.~~ Sanchirico, J.N. 2009. *An Adaptation Portfolio for the United States Coastal and Marine Environment*. *Adaptation – An Initiative of the Climate Policy Program at RFF*. ~~Resources for the Future~~. June 2009. [Resources for the Future, Washington, DC](#).
- Knight, J.R., ~~R.J.~~Allan, R.J., ~~C.K.~~Folland, C.K., ~~M.~~Vellinga, M. and ~~M.E.~~ Mann, M.E. 2005. A signature of persistent natural thermohaline circulation cycles in observed climate. *Geophysical Research Letters* 32: L20,708.
- ~~Knutson, T.R., J. McBride, J., J. Chan, J., K.A. Emanuel, K.A., G. Holland, G., C. Landsea, C., I. Held, I., J. Kossin, J., A.K. Srivastava, A.K. and M. Sugi, M.~~ 2010. Tropical cyclones and climate change. *Nature Geoscience* 3:157-163.

Koch, ~~S.tephanie~~ and ~~Peter~~ Paton, ~~P.~~ 2009. Shorebird Migration Chronology at a Stopover Site in Massachusetts. *Wader Study Group Bulletin*: 116(~~3~~):-167-174.

~~Klein, R.W. 2010. *Informed Decisions on Catastrophe Risk, Issue Brief*. Spring 2010 Wharton Center for Risk Management and Decision Processes, Philadelphia, PA.~~

Kraus, S.D., ~~R.M.~~ Pace III, ~~R.M.~~, and ~~T.R.~~ Frasier, ~~T.R.~~ 2007. High investment, low return: the strange case of reproduction in *Eubalaena glacialis*. In: *The Urban Whale: North Atlantic Right Whales at the Crossroads*, pp. 172-199. ~~in: S.D. Kraus, S.D. and R.M. Rolland, R.M.~~ (eds.): *The Urban Whale: North Atlantic Right Whales at the Crossroads*. Harvard University Press, Cambridge, MA.

~~Kunreuther, H.oward, Robert Meyer, R., and Erwann O. Michel Kerjan, E.O. 2010. *Informed Decisions on Catastrophe Risk*. Wharton Center for Risk Management and Decision Processes.~~

Learmonth, J.A., ~~C.D.~~ MacLeod, ~~C.D.~~, ~~M.B.~~ Santos, ~~M.B.~~, ~~J.G.~~ Pierce, ~~J.G.~~, ~~H.Q.P.~~ Crick, ~~H.Q.P.~~ and ~~R.A.~~ Robinson, ~~R.A.~~ 2006. Potential effects of climate change on marine mammals. *Oceanography and Marine Biology*: 44:~~;~~431-464.

Larson, P., ~~S.~~ Goldsmith, ~~S.~~, ~~O.~~ Smith, ~~O.~~, ~~M.~~ Wilson, ~~M.~~, ~~K.~~ Strzepek, ~~K.~~, ~~P.~~ Chinowsky, ~~P.~~, ~~B.~~ Saylor, ~~B.~~ 2008. Estimating Future Costs for Alaska Public Infrastructure at Risk from Climate Change. *Global Environmental Change* 18(~~3~~):442-457.

Lenton, T.M., ~~H.~~ Held, ~~H.~~, ~~E.~~ Kriegler, ~~E.~~, ~~J.W.~~ Hall, ~~J.W.~~, ~~W.~~ Lucht, ~~W.~~, ~~S.~~ Rahmstorf, ~~S.~~, and ~~H.J.~~ Schellnhuber, ~~H.J.~~ 2008. Tipping elements in the Earth's climate system. *Proceedings of the National Academy of Sciences of the United States*: 105(~~6~~), pp.: 1786-1793. Available at: www.pnas.org/cgi/content/full/0705414105/DC1

Le Quéré, C., Raupach, M.R., Canadell, J.G., Marland, G., et al. [~~Author list includes over twenty more names and includes lead authors only.~~] 2009. Trends in the sources and sinks of carbon dioxide. *Nature Geoscience*: 2(~~12~~):831-836. doi: 10.1038/ngeo689

Li, Y. and ~~T.~~ Smayda, ~~T.~~ 1998. Temporal variability of chlorophyll in Narragansett Bay, 1973-1990. *ICES Journal of Marine Science*: 55:661-667.

Lighthouse Friends. 2010. Block Island North, RI.

<http://www.lighthousefriends.com/light.asp?ID=40> as of 30 March 2010.

MacGarvin, M. and Simmonds, M.P. 1996. Whales and climate change. In: *The Conservation of Whales and Dolphins – Science and Practice*, pp. 321-332. (eds ~~M.P.~~ Simmonds, ~~M.P.~~ and ~~J.D.~~ Hutchinson, ~~J.D.~~ (eds.), pp. 321-332. John Wiley and Sons, Chichester, UK.

~~Madsen, T., and Figdor, E. 2007. *When it rains, it pours: Global warming and the rising frequency of extreme precipitation in the United States*. Environment Rhode Island Research and Policy Center, Providence, RI.~~

Mann, M.E., and Emanuel, K.A. 2006. Atlantic hurricane trends linked to climate change. *Eos, Transactions, American Geophysical Union* 87:233-244.

Mann, M.E., Woodruff, J.E., Donnelly, J.P. and ~~Z.~~Zhang, Z. 2009. Atlantic hurricanes and climate over the past 1,500 years. *Nature*: 460:800-883.

Mathews-Amos, A. and Berntson, D.A. 1999. *Turning up the heat: How Global Warming Threatens Life in the Sea.* World Wildlife Fund and Marine Conservation Biology Institute, Washington, D.C.

McCarty J.P. 2001. Ecological consequences of recent climate change. *Conservation Biology*: 15:320-331.

McMahon, C. R., and Hays, G.C. 2006. Thermal niche, large-scale movements and implications of climate change for critically endangered marine vertebrate. *Global Change Biology* 12:1330-1338.

Morris, J.A., Jr., and ~~P.E.~~ Whitfield, P.E. 2009. Biology, Ecology, Control and Management of the Invasive Indo-Pacific Lionfish: An Updated Integrated Assessment. NOAA Technical Memorandum NOS NCCOS 99. 57 pp. NOAA, National Ocean Service, Beaufort, NC. http://coastalscience.noaa.gov/documents/lionfish_%20ia2009.pdf as of 15 April 2010.

Mrosovsky, N. and ~~J.~~Provancha, J. 1989. Sex ratio of loggerhead sea turtles hatching on a Florida beach. *Canadian Journal of Zoology*: ~~Vol.~~67, ~~pp.~~:2533-2539.

Munday, P.D., Dixon, D.L., Donelson, J.M., Jones, G.P., Pratchett, M.S., Devitsina, G.V., and ~~K.B.~~Døving, K.B. 2009. Ocean acidification impairs olfactory discrimination and homing ability of a marine fish. *Proceedings of the National Academy of Sciences*: 106(6):1848-1852.

Murawski, S.A. 1993. Climate change and marine fish distributions: forecasting from historical analogy. *Transactions of the American Fisheries Society*: 122:647-658.

Nakicenovic, N., Alcamo, J., Davis, G., de Vries, B., Fenhann, J., Gaffin, S., Gregory, K., Grubler, A., Jung, T.Y., Kram, T., La Rovere, E.L., Michaelis, L., Mori, S., Sankovski, A., Schlesinger, M., Shukla, P., Smith, S., Swart, R., van Rooijen, S., Victor, N., and Dadi, Z.-et al. 2000. *IPCC Special Report on Emission Scenarios – A Special Report of IPCC Working Group III.* Nakicenovic, N. and Swart, R. (eds.). 599 pp. Cambridge University Press, Cambridge, U.K. 599 pp.

Narragansett Bay Estuary Program (NBEP). 2009. *Currents of Change: Environmental Status and Trends of the Narragansett Bay Region.* Final Technical Draft – August 2009 Report. 80 pp. Narragansett Bay Estuary Program, Narragansett, RI. 71 pp. Available online at: <http://www.nbep.org/statusandtrends/CoC-finaltech-3aug09.pdf>

National Research Council of the National Academy of Science (NAS). 2008. *Impacts of Climate Change*. Committee on Ecological Impacts of Climate Change. 70 pp. National Academy Press, Washington, D.C. ~~70 pp.~~ ~~Available online at:~~ <http://www.nap.edu/catalog/12491.html>

National Oceanic and Atmospheric Administration/National Ocean Service (NOAA/NOS). 2008a. Tides and Currents – Mean Sea Level Trend 8452660 Newport, RI. http://tidesandcurrents.noaa.gov/sltrends/sltrends_station.shtml?stnid=8452660%20Newport.%20RI as of 15 March 2010.

National Oceanic and Atmospheric Administration/National Ocean Service (NOAA/NOS). 2008b. Tides and Currents – Mean Sea Level Trend 8510560 Montauk, NY. <http://tidesandcurrents.noaa.gov/geo.shtml?location=8510560> as of 15 March 2010.

National Research Council (NRC). 2002. *Abrupt Climate Change: Inevitable Surprises*. National Academy Press, Washington, DC.

~~New England Aquarium. 2009. Climate Change Effects on Ocean Animals. <http://www.neaq.org/conservation-and-research/climate-change/effects-on-ocean-animals.php>~~

New England Regional Assessment Group (NERAG). 2001. *Preparing for a Changing Climate: The Potential Consequences of Climate Variability and Change*. New England Regional Overview. New England Regional Assessment Group, U.S. Global Climate Change Research Program, University of New Hampshire, Durham, NH. 96 pp. ~~Available online at:~~ http://www.necci.sr.unh.edu/2001_NERA_report.html

Neumann, J~~ames~~-E. and J~~ason~~-C. Price, J.C. 2009. *Adapting to Climate Change The Public Policy Response, Public Infrastructure*. Resources for the Future, Washington, DC.

Nicholls, R. J., S~~teven~~-Hanson, S., C~~laudia~~-Herweijer, C., N~~ancy~~-Patmore, N., S~~arah~~-Hallegatte, S., J~~ean~~-Morlot, J., J~~ean~~-Château, J., R~~obert~~-Muir-Wood, R. 2008. *Ranking Port Cities with High Exposure and Vulnerability to Climate Extremes: Exposure Estimates*. 19 November 2008 56pp. OECD Environment Working Papers, No. 1, OECD Publishing, Washington, DC. p.56. ~~Available at:~~ <http://www.oecd.org/dataoecd/16/58/39720578.pdf> ~~???~~

~~Nixon, S.W. Graduate School of Oceanography, University of Rhode Island. Personal communication.~~

~~Nixon, S.W., S. Granger, and Buckley, B. 2003. The Warming of Narragansett Bay. *41°N Rhode Island Sea Grant and University of Rhode Island Coastal Institute* 2:19-20.~~

Nixon, S.W., Granger, S., Buckley, B.A., Lamont, M. and B~~rian~~-Rowell, B. 2004. A one hundred and seventeen year coastal water temperature record from Woods Hole, Massachusetts. *Estuaries and Coasts*. 27(3):397-404.

Nixon, S.W., Fulweiler, R.W., Buckley, B.A., Granger, S.L., Nowicki B.L. and ~~K.M~~ Henry, K.M. 2009. The impact of changing climate on phenology, productivity, and benthic-pelagic coupling in Narragansett Bay. *Estuarine, Coastal and Shelf Science*: 18:1-18.

~~Nixon, S.W., S. Granger, and B. Buckley, B., (2003). "The Warming of Narragansett Bay". 41st N Volume 2, Issue 1. Rhode Island Sea Grant and University of Rhode Island Coastal Institute. (<http://seagrant.gso.uri.edu/41N/Vol2No1/index.html>).~~

Northeast Climate Impact Assessment (NECIA). 2006. *Climate Change in the U.S. Northeast. A Report of the Northeast Climate Impacts Assessment.* Union of Concerned Scientists, Cambridge, Massachusetts: ~~Union of Concerned Scientists~~. 35pp.

Northeast Fisheries Science Center (NEFSC). 2009. *Ecosystem Assessment Report for the Northeast U.S. Continental Shelf Large Marine Ecosystem.* ~~US Department of Commerce, Ecosystem Assessment Program~~. Ref Doc. 09-11, 61 pp. US Department of Commerce, Ecosystem Assessment Program, Silver Spring, MD. Available online at <http://www.nefsc.noaa.gov/nefsc/publications/???>

Nye, J., Link, J., Hare, J. and ~~W.~~ Overholtz, W. 2009. Changing spatial distribution of northwest Atlantic fish stocks in relation to temperature and stock size. *Marine Ecology Progress Series*: 393:111-129.

O'Donnell, J. In press. *A change in the wind: long term trends in the forcing of Long Island Sound.*

Overpeck, J.T., and ~~J.L.~~ Weiss, J.L. 2009. Projections of future sea level becoming more dire. *Proceedings of the National Academy of Science*: 106:(~~51~~). pp-21461-21462.

Oviatt, C. 2004.- The changing ecology of temperate coastal waters during a warming trend. *Estuaries*: 27(~~8~~):895-904.

Oviatt, C., Olsen, S., Andrew, M., Collie, J., Lynch, T. and ~~K.~~ Raposa, K. 2003. A century of fishing and fish fluctuations in Narragansett Bay. *Reviews in Fisheries Science*: 11:221-242.

Perry, A.L., Low, P.J., Ellis, J.R. and ~~J.D.~~ Reynolds, J.D. 2005. Climate change and distribution shifts in marine fishes. *Science*: 308:1912-1915.

Pershing, A.J., ~~C.H.~~ Greene, C.H., ~~C.~~ Hannah, C., ~~D.~~ Sameoto, D., ~~E.~~ Head, E., ~~D.G.~~ Mountain, D.G., ~~J.W.~~ Jossi, J.W., ~~M.C.~~ Benfield, M.C., ~~P.C.~~ Reid, P.C. and ~~E.G.~~ Durbin, E.G. 2001. Oceanographic responses to climate in the Northwest Atlantic. *Oceanography*: 14(~~3~~):76-82.

Pfeffer, W.T., Harper, J.T. and ~~S.~~ O'Neel, S. 2008. Kinematic constraints on glacier contributions to 21st century sea level rise. *Science*: 321(~~5894~~):1340-1343.

- Phillips, M.R. and Jones, A.L. 2006. Erosion and tourism infrastructure in the coastal zone: Problems, consequences and management. *Tourism Management* 27:517-524.
- PIANC - The World Association for Waterborne Transport Infrastructure (PIANC). 2009. Climate Change and Navigation. Waterborne Transport, Ports and Waterways: A Review of Climate Change Drivers, Impacts, Responses. EnviCom Task Group 3, PIANC – The World Association for Waterborne Transport Infrastructure, Brussels, Belgium.
- Pilson, M.E.Q. 1998. *An Introduction to the Chemistry of the Sea*. Prentice Hall Publishing, New Jersey. ~~431 pp.~~
- Pilson, M.E.Q. 2008. Narragansett Bay amidst a globally changing climate. In: ~~Desbonnet, A., and B.A. Costa-Pierce, (Eds.)~~. *Science for Ecosystem-Based Management: Narragansett Bay in the 21st Century*. pp. 35-46. Desbonnet, A., and Costa-Pierce, B.A., (eds.), Springer Publishing, New York, ~~2008~~. pp. 35-46.
- Providence. ~~(2000)~~. *Strategy for Reducing Risks from Natural Hazards in Providence, Rhode Island*. Prepared by S. Shamoon, L. Watson, P. Pogue, V. Lee, J. Almeida, and R. Duhaime.
- Pryor, S.C., Barthelmie, R.J., Young, D.T., Tackle, E.S., Arritt, R.W., Flory, D., Gutowski, W.J., Nunes, A. and ~~J. Roads, J.~~ 2009. Wind speed trends over the contiguous United States. *Journal of Geophysical Research*. 114: D14105.
- Rahmstorf, S. 2007. A semi-empirical approach to projecting future sea-level rise. *Science*: 315(~~5810~~):368-370.
- Rahmstorf, S., Cazenave, A., Church, J.A., Hansen, J.E., Keeling, R.F., Parker, D.E and ~~R.C.J. Somerville, R.C.J.~~ 2007. Recent climate observations compared to projections. *Science*: 316(~~5825~~):709.
- Ramanathan, V. and ~~Y. Feng, Y.~~ 2008. On avoiding dangerous anthropogenic interference with the climate system: formidable changes ahead. *Proceedings of the National Academy of Sciences*: 105(~~38~~):14245-14250.
- Raupach, M.R., Marland, G. ~~e~~Ciais, P., Le Quéré, C., Canadell, J.G., Klepper, G. and ~~C.B.~~Field, C.B. 2007. Global and regional drivers of accelerating CO₂ emissions. *Proceedings of the National Academy of Sciences*: 104(~~24~~):10288-10293.
- Reynolds, A. E. 1997. *Block Island South East Lighthouse National Historic Landmark Study Maritime Heritage Program – Maritime Landmarks Light Stations*. Block Island South East Lighthouse National Historic Landmark Study, National Park Service. September 25, 1997. <http://www.nps.gov/history/MARITIME/nhl/blockisl.htm> as of 15 March 2010.
- Richardson, K., Steffen, W., Schellnhuber, H.J., Alcamo, J., Barker, T, Kamer, D.M, Leemans, R., Liverman, D., Munasinghe, M., Osman-Elasha, B., Stern, N. and ~~O.~~Waever, O. 2009.

- Climate Change: Global Risks, Challenges & Decisions, 2nd Edition*. Synthesis Report of the Copenhagen Climate Congress, University of Copenhagen, Copenhagen, Sweden. 2nd edition. 38 pp. Available at: <http://climatecongress.ku.dk/pdf/synthesisreport/>
- ~~R.I. Emergency Management Agency (RIEMA)-Pogue, P.~~ 2005. *Rhode Island State Hazard Mitigation Plan*. Rhode Island Emergency Management Agency, Cranston, RI. Prepared by P. Pogue, RIEMA.
- Ries, J.B., Cohen, A.L. and ~~D.C.~~ McCorkle, D.C. 2009. Marine calcifiers exhibit mixed responses to CO₂-induced ocean acidification. *Geology*, 37(12):1131-1134.
- Roemmich, D. and ~~J.~~ McGowan, J. 1995. Climatic Warming and the Decline of Zooplankton in the California Current. *Science*, Vol. 267, pp. 1324-1326.
- Rose, G. 2005. On distributional responses of North Atlantic fish to climate change. *ICES Journal of Marine Science*, 62:1360-1374.
- Sabine, C.S., Feely, R.A., Gruber, N., Key, R.M., Lee, K., Bullister, J.L., Wanninkhof, R., Wong, C.S., Wallace, D.W.R., Tillbrook, B., Millero, F.J., Peng, T-H., Kozyr, A., Ono, T. and ~~A.F.~~ Rios, A.F. 2004. The oceanic sink for anthropogenic CO₂. *Science*, 305:367-371.
- Sala, O.E., Chapin, F.S., III, Armesto, J.J., Berlow, E., Bloomfield, J., Dirzo, R., Huber-Sanwald, E., Huenneke, L.F., Jackson, R.B., Kinzig, A., Leemans, R., Lodge, D.M., Mooney, H.A., Oesterheld, M., Poff, N.L., Sykes, M.T., Walker, B.H., Walker, M. and ~~&~~ Wall, D.H. 2000. Global biodiversity scenarios for the year 2100. *Science*, 287:1770-1774.
- Sanchirico, ~~J.~~ ~~ames~~ N. 2009. *Better Defined Rights and Responsibilities in Marine Adaptation Policy*. Resources for the Future, Washington, DC.
- Sandvik, H. and ~~K.E.~~ Erikstad, K.E. 2008., Seabird life histories and climate fluctuations: a phylogenetic-comparative time series analysis of North Atlantic seabirds. *Ecography*, Vol. 31, pp. 73-83.
- Sandvik, H., ~~T.~~ Coulson, T., and ~~B.~~ Saether, B. 2008. A latitudinal gradient in climate effect on seabird demography: results from interspecific analyses. *Global Change Biology*, Vol. 14(4), pp. 703-713.
- Schellnhuber, H. J. 2009. Tipping elements in the Earth System. *Proceedings of the National Academy of Sciences*, 106(49), pp. 20561-20563.
- Schubert, R., Schellnhuber, H.-J., Buchmann, N., Epiney, A., Griebhammer, R., Kulesa, M., Messner, D., Rahmstorf, S. and ~~J.~~ Schmid, J. 2006. *The Future Oceans: Warming up, Rising High, Turning Sour*. German Advisory Council on Global Change, Special Report. Berlin, Germany. 123 pp. Available at: http://www.wbgu.de/wbgu_home_engl.html

- Short, F.T., Koch, E.W., Creed, J.C., Magalhães, K.M., Fernandez, E. and Gaeckle, J.L. 2006. SeagrassNet monitoring across the Americas: case studies of seagrass decline. *Marine Ecology* 27(4): 277-290.
- Simmonds, M. 2004. *Whales and Dolphins of the World*. New Holland Publishers, London, UK.
- Simmonds, M. and ~~S.~~ Issac, S. 2007. The Impacts of Climate Change on Marine Mammals: Early Signs of Significant Problems. *Oryx*, ~~Vol. 41, January 2007, pp.:~~ 19-25.
- Smayda, T. 1998. Patterns of variability characterizing marine phytoplankton, with examples from Narragansett Bay. *ICES Journal of Marine Science*: 55:562-573.
- Smetacek, V. 1984. The supply of food to the benthos. In: ~~Fasham, M. (Ed.)~~ *Flows of Energy and Materials in Marine Ecosystems*, pp. 517-547. ~~Fasham, M. (ed.)~~, NATO Conference Series, Plenum Press, New York, NY, pp. 517-547.
- Solomon, S., Plattner, G.-K., Knutti, R. and ~~P.~~ Friedlingstein, P. 2009. Irreversible climate change due to carbon dioxide emissions. *Proceedings of the National Academy of Sciences*: 106(6):1704-1709.
- Sorte, C.J.B. and ~~G.E.~~ Hofmann, G.E. 2004. Changes in latitudes, changes in aptitudes: *Nucella canaliculata* (Mollusca: Gastropoda) is more stressed at its range edge. *Marine Ecology Progress Series*: 274:263-268.
- Sorte, C.J.B., ~~S.L.~~ Williams, S.L., and ~~J.T.~~ Carlton, J.T. 2010. Marine range shifts and species introductions: comparative spread rates and community impacts. *Global Ecology and Biogeography*, In press.
- Sparks, T. and ~~C.~~ Mason, C. 2001. Dates of Arrivals and Departures of Spring Migrants taken from the Essex Bird Reports 1950-1998. *Essex Bird Report*, ~~Vol. 1999, pp.:~~ 154-164.
- Sparks, T., ~~D.~~ Roberts, D., and ~~H.~~ Crick, H. 2001. What is the Value of First Arrival Dates of Spring Migrants in Phenology? *Avian Ecology and Behaviour*, ~~Vol. 7, pp.:~~ 75-85.
- Stachowicz, J.J., Terwin, J.R., Whitlatch, R.B. and ~~R.W.~~ Osman, R.W. 2002a. Linking climate change and biological invasions: ocean warming facilitates nonindigenous species invasions. *Proceedings of the National Academy of Sciences*: 99(24):15497-15500.
- Stachowicz, J.J., Fried, H., Osman, R.W. and ~~R.B.~~ Whitlatch, R.B. 2002b. Biodiversity, invasion resistance, and marine ecosystem function: reconciling pattern and process. *Ecology*: 83:2575-2590.
- Steffan, W. In press. 2009. *Climate Change 2009: Faster Change and More Serious Risks*. Report to the Department of Climate Change, Australian Government, ~~in press.~~

- Sullivan, B., Van Keuren, D. and ~~M.~~Clancy, M. 2001. Timing and size of blooms of the ctenophore *Mnemiopsis leidyi* in relation to temperature in Narragansett Bay, Rhode Island. *Hydrobiologia*: 451:113-120.
- Sullivan, B.K., Costello, J.H. and ~~D.~~ Van Keuren, D. 2007. Seasonality of the copepods *Acartia hudsonica* and *Acartia tonsa* in Narragansett Bay, RI, USA during a period of climate change. *Estuarine, Coastal and Shelf Science*: 73(1-2):259-267.
- Taylor, D. 2003.— Size-dependent predation on post-settlement winter flounder, *Psuedopleuronectes americanus* by sand shrimp, *Crangon septemspinosa*. *Marine Ecology Progress Series*: 263:197-215.
- The Royal Society (TRS). 2005. *Ocean Acidification Due to Increasing Atmospheric Carbon Dioxide*. The Royal Society, London, UK.
- Thompson, D.W.J. and ~~J.M.~~Wallace, J.M. 1998. The arctic oscillation signature in the wintertime geopotential height and temperature fields. *Geophysical Research Letters* 25: 1297-1300.
- Thompson, P. and ~~J.~~Ollason, J. 2001. Lagged Effects of Ocean Climate Change on Fulmar Populatin Dynamics. *Nature*, ~~Vol.~~ 413:, ~~pp.~~ 417-420.
- Titus, J.G., and ~~C.~~Richman, C. 2001. Maps of lands vulnerable to sea level rise: modeled elevations along the US Atlantic and Gulf coasts. *Climate Research*: 18(3):, 205-228.
- Transportation Research Board (TRB). 2008. *Potential Impacts of Climate Change on U.S. Transportation*. Committee on Climate Change and U.S. Transportation. National Research Council of the National Academies, National Academy of Sciences, ~~Washington, DC~~, Academy of Sciences.
- U.S. Environmental Protection Agency (USEPA). 2008. *Effects of climate change for aquatic invasive species and implications for management and research*. ~~National Center for Environmental Assessment, Washington, DC~~; EPA/600/R-08/014. 337 pp. National Center for Environmental Assessment, Washington, DC. Available from the National Technical Information Service, Springfield, VA.,
- U.S. Environmental Protection Agency (USEPA). 2008. *Planning of Climate Change Impacts at U.S. Ports*. 13 pp. -White Paper from the Office of Policy, Economics and Innovation – Sector Strategies Division in partnership with the American Association of Port Authorities, Washington, DC. ~~13 pp.~~
- U.S. Fish and Wildlife Service (USFWS). 2010. *State of the Birds: 2010 Report on Climate Change*. 32 pp. ~~By the~~ Cornell Lab of Ornithology, Ithica, NY. ~~Available at~~ <http://www.stateofthebirds.org/>

- U.S. Global Change Research Program (USCGRP). 2009. *Global climate Change Impacts in the United States*. Karl, T.R., Melillo, J.M. and T.C. Peterson. (eEds.). 188 pp. Cambridge University Press, [New York, NY.](#) 188 pp.
- United Nations Environment Programme (UNEP). 2009. *Climate Change Science Compendium*. McMullen, C.P. and J. Jabbour. (eEds.). 68 pp. [United Nations Environment Programme, Washington, DC.](#)
- Vallee, D. and ~~M.~~Dion, M. 1996. *Southern New England Tropical Storms and Hurricanes: A ninety-seven year summary 1900-1996 including several early American hurricanes*. [Taunton, MA,](#) National Weather Service Forecast Office, [Taunton, MA.](#)
- Vellinga, P., Katsman, C., Sterl, A., Beersma, J., Hazeleger, W., Church, J., Kopp, R., Kroon, D., Oppenheimer, M., Plag, H., Rahmstorf, S., Lowe, J., Ridley, J., von Storch, H., Vaughan, D., van de Wal, R., Weisse, R., Kwadijk, J., Lammersen, R. and ~~N.~~Marinova, N. 2008. *Exploring the high-end climate change scenarios for flood protection of the Netherlands: an international scientific assessment. International Scientific Assessment.* 162 pp. KNMI, Wageningen, the Netherlands. — 162 — pp. — Available — at: <http://coast.gkss.de/staff/storch/pdf/Delta-english.sept2.pdf>
- Walther, G., Roques, A., Hulme, P.E., Sykes, M.T., Pyšek, P., Kühn, I., Zobel, M., Bacher, S., Botta-Dukát, Z., Bugmann, H., Czúcz, B., Dauber, J., Hickler, T., Jarošík, V., Kenis, M., Klotz, S., Minchin, D., Moora, M., Nentwig, W., Ott, J., Panov, V.E., Reineking, B., Robinet, C., Semchenko, V., Solarz, W., Thuiller, W., Vilà, M., Vohland, K., and ~~J.~~Settele, J. 2009. Alien species in a warmer world: risks and opportunities. *Trends in Ecology and Evolution*: 24(12):686-693.
- Wanless, S., Frederiksen, M., Daunt, F., Scott, B.-E., ~~and~~& Harris, M.-P. 2007. Black-legged kittiwakes as indicators of environmental change in the North Sea: evidence from long-term studies. *Progress in Oceanography*; 72: 30-38
- Wanless, S., Harris, M.P., Redman, P. and Speakman, J. 2005. Low energy values of fish as a probable cause of a major seabird breeding failure in the North Sea. *Marine Ecology Progress Series*; 294: 1-8.
- Watanabe, M. and ~~T.~~Nitta, T. 1998. Relative impact of snow and sea surface temperature anomalies on an extreme phase in winter atmosphere circulation. *Journal of Climate* 11: 2837-2857.
- World Conservation Monitoring Center (WCMC). 2000. *Biodiversity and Climate Change 2000*. United Nations Environment Program, [Washington, DC.](#) <http://www.unep-wcmc.org/climate/oceans/biodiv.aspx>
- Webster, P.J., Holland, G.J., Curry, J.A., and Chang, H.-R. 2005. Changes in tropical cyclone number, duration and intensity in a warming environment. *Science* 309:1844–1846.

- Whitehead, H. 1997. *Sea surface temperature and the abundance of sperm whale calves off the Galapagos Islands: implications for the effects of global warming*. Report of the International Whaling Commission, 47: 941-944
- ~~Yin, J., Schlesinger, M.E. and R.J. Stouffer. 2009. Model projections of rapid sea-level rise on the northeast coast of the United States. *Nature Geoscience*. 2:262-266.~~
- Yin, J.H. 2005. A consistent poleward shift of the storm tracks in simulations of 21st century climate. *Geophysical Research Letters* 32: L18701, DOI:10.1029/2005GL023684.
- Yin, J., Schlesinger, M.E. and Stouffer, R.J. 2009, Model projections of rapid sea-level rise on the northeast coast of the United States. *Nature Geoscience*: 2:262-266.
- Zhang, X., Zwiers, F.W., Hegerl, G.C., Lambert, F.H., Gillett, N.P., Solomon, S., Scott, P.A. and ~~T.~~ Nozawa, T. 2007. Detection of human influence on twentieth-century precipitation trends. *Nature*: 448:461-465.