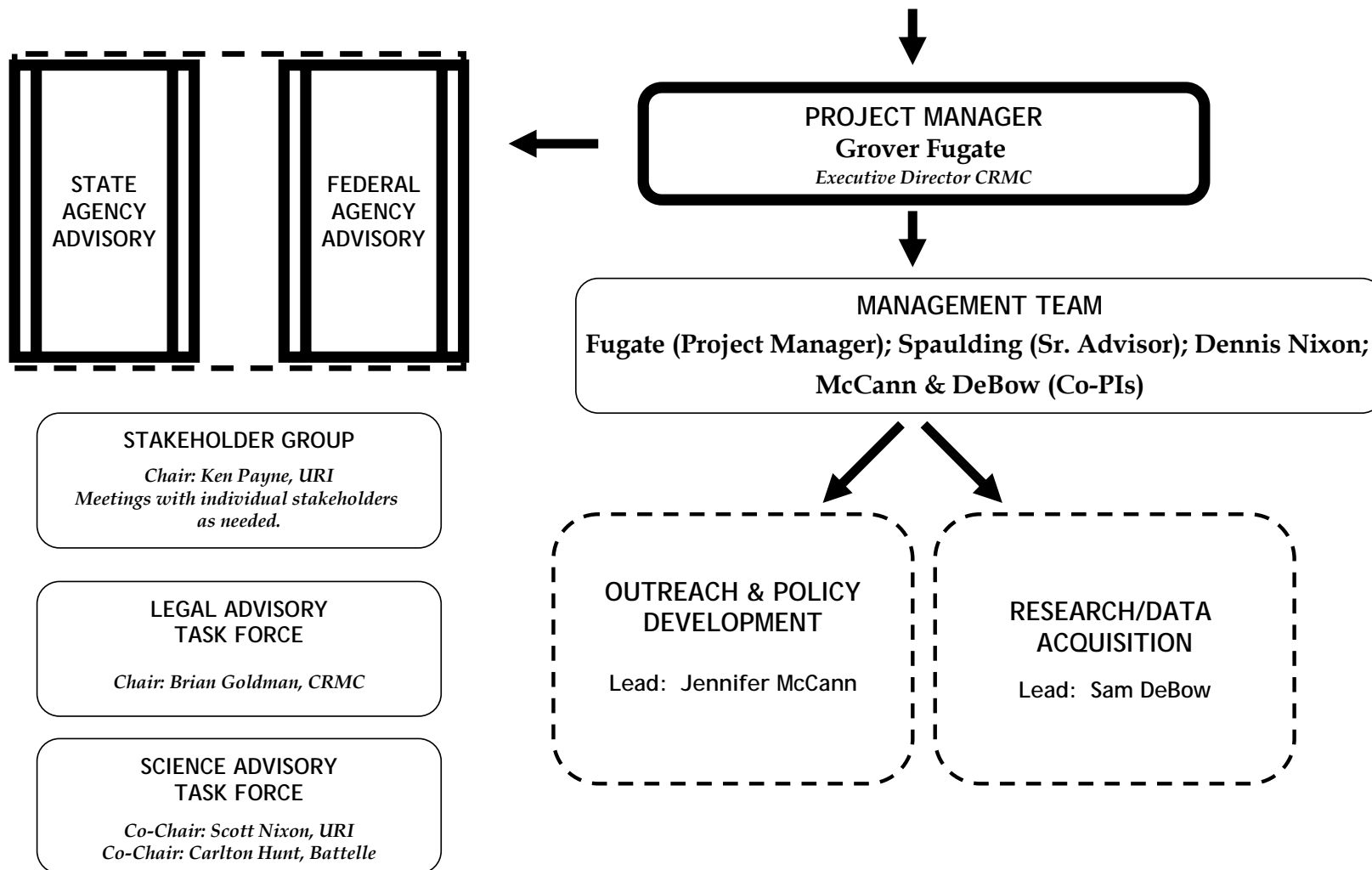


Rhode Island Coastal Resources Management Council (CRMC) Ocean Special Area Management Plan (Ocean SAMP) Organizational Chart

OCEAN SAMP SUBCOMMITTEE

Michael Tikoian (Chair) CRMC, Paul Lemont (Vice Chair), Donald Gomez, David Abedon, Robert Driscoll, Brian Goldman (Legal Counsel)



Rhode Island Coastal Resources Management Council Ocean Special Area Management Plan (Ocean SAMP)

OSAMP Researchers

Sam De Bow (Lead), URI Oceanography
Peter August, URI Natural Resources Science
Christopher D.P. Baxter, URI Ocean Engineering
David Beutel, RI CRMC
Jon Boothroyd, URI CELS/ GEO
Dan Codiga, URI Oceanography
Jeremy Collie, URI Oceanography
Barry Costa-Pierce, RI Sea Grant
Teresa Crean, URI Coastal Resources Center/ RI Sea Grant
Chris Damon, URI Natural Resources Science
Dennis Esposito, Roger Williams University School of Law
Susan Farady, Roger Williams University School of Law
Andrew Gill, Cranfield University
Stephen Granger, URI Oceanography
Annette Grilli, URI Ocean Engineering
Stephan Grilli, URI Ocean Engineering
Jeffrey Harris, URI Ocean Engineering
Brian Heikes, URI Oceanography
Sau Lon James Hu, URI Ocean Engineering
John Jensen, URI Underwater Archaeology
Robert Kenney, URI Oceanography
John W. King, URI Oceanography
Charles LaBash, URI Natural Resources Science
Rod Mather, URI History/ Underwater Archaeology
Jennifer McCann, URI CRC/RI Sea Grant
Deborah French McCay, Applied Science Associates
Scott McWilliams, URI CELS/ Natural Resources Science
John Merrill, URI Oceanography
James H. Miller, URI Ocean Engineering
David Mizrahi, NJ Audubon Society
Scott Nixon, URI Oceanography
Stephen Olsen, URI Coastal Resources Center
Candace Oviatt, URI Oceanography
Peter Paton, URI Natural Resources Science
Kenneth Payne, URI Environment & Life Science
Kim Peters, NJ Audubon Society
Neal Pettigrew, University of Maine, Oceanography
Rob Pockalny, URI Oceanography
Gopu Potty, URI Ocean Engineering
Sheldon Pratt, URI Oceanography
Kathleen Vigness Raposa, URI Natural Resources Science
Laura Skrobe, RI Sea Grant
Tiffany Smythe, URI Coastal Resources Center/ RI Sea Grant
Malcolm L. Spaulding, URI Ocean Engineering
Frank Thompson, **Centre for Environment, Fisheries & Aquaculture Science**
David Ullman, URI Oceanography

Outreach Team

Jennifer McCann (Lead), URI – RI Sea Grant
Monica Allard-Cox, URI-RI Sea Grant
Meredith Haas, RI Sea Grant
Sue Kennedy, URI-Coastal Resources Center
Amber Neville, URI-RI Sea Grant
Laura Ricketson-Dwyer, RI CRMC
Chip Young, URI-Coastal Resources Center

Federal Agency Advisory Committee

Narragansett Indian Tribe
NOAA National Marine Fisheries Service
US Army Corps of Engineers
US Coast Guard
US DOI Minerals Management Service
US Environmental Protection Agency
US Fish & Wildlife Service
US Navy

State Agency Advisory Committee

RI Department of Environmental Management
RI Economic Development Corporation
RI Historical Preservation & Heritage Commission
RI Statewide Planning Program
Ad Hoc:
Massachusetts CZM
Connecticut CZM
New York CZM

Science Advisory Task Force

Co-Chair: Scott Nixon, URI GSO
Co-Chair: Carlton Hunt, Battelle Ocean Sciences, Duxbury, MA
Robert Beardsley, WHOI, emeritus
Jon Boothroyd, RI State Geologist
Robert Buchsbaum, Massachusetts Audubon Society
Jeremy Collie, URI Oceanography
Jonathan Garber, US EPA Atlantic Ecology Laboratory
Candace Oviatt, URI Oceanography
Kevin Ruddock, The Nature Conservancy
Osvaldo Sala, Brown University
Caroly Shumway
Jim Yoder, WHOI
Roman Zajac, Biology Dept., University of New Haven

Legal Advisory Task Force

Chair: Brian Goldman, CRMC
Jerry Elmer, Staff Attorney, Conservation Law Foundation, Rhode Island Advocacy Center
Dennis Esposito, Roger Williams University School of Law
Susan Farady, Roger Williams University School of Law
Wendy Waller, Save the Bay

Stakeholder Group

Chair: Kenneth Payne
Aquidneck Island Planning Commission
Atlantic Offshore Lobster Association
Audubon Society of Rhode Island
Block Island Tourism Council
Charlestown Town Council
City of Newport
Commercial Fisheries Research Foundation
Conservation Law Foundation
Greater Providence Chamber of Commerce
Jamestown Chamber of Commerce
Jamestown Town Council
Narragansett Chamber of Commerce
Narragansett Indian Tribal Historic Preservation Office
Narragansett Indian Tribe
National Grid
Newport County Chamber of Commerce
Newport County Convention and Visitors Bureau
Northeast Marine Pilots
Ocean State Aquaculture Association
Ocean State Fishermen's Association
People's Power & Light
Rhode Island Chapter/Surfriders' Association
Rhode Island AFL-CIO
Rhode Island Commercial Fishermen's Association
Rhode Island Fishermen's Alliance
Rhode Island Historical Society
Rhode Island League of Cities and Towns
Rhode Island Lobstermen's Association
Rhode Island Marine Trades Association
Rhode Island Monkfishermen's Association
Rhode Island Party & Charter Boat Association
Rhode Island Saltwater Anglers Association
Rhode Island School of Design
Rhode Island Wind Alliance
Save the Bay
Sierra Club
South County Tourism
South Kingstown Chamber of Commerce
The Nature Conservancy
Town of Little Compton
Town of Middletown
Town of Narragansett
Town of New Shoreham (Block Island)
Town of South Kingstown
Washington County Regional Planning Council
Westerly Town Council
Wind Power RI Project, Roger Williams University

With participation of members of the public and interested parties.