



*Working towards healthy, self-sustaining populations
for all Atlantic coast fish species or successful
restoration well in progress by 2015*

Coastwide Stock Assessment of Atlantic Menhaden

Braddock Spear

October 30, 2007



ASMFC

- **Formed in 1942**
- **15 Atlantic coast states, ME – FL**
- **0 – 3 miles from shore**



ASMFC

- **Transboundary resources**
- **Coordinate policy and stewardship**
- **22 species or species groups**



Assessment Timeline

2003: Last peer reviewed assessment

2006: Most recent update

2010: Next scheduled peer review

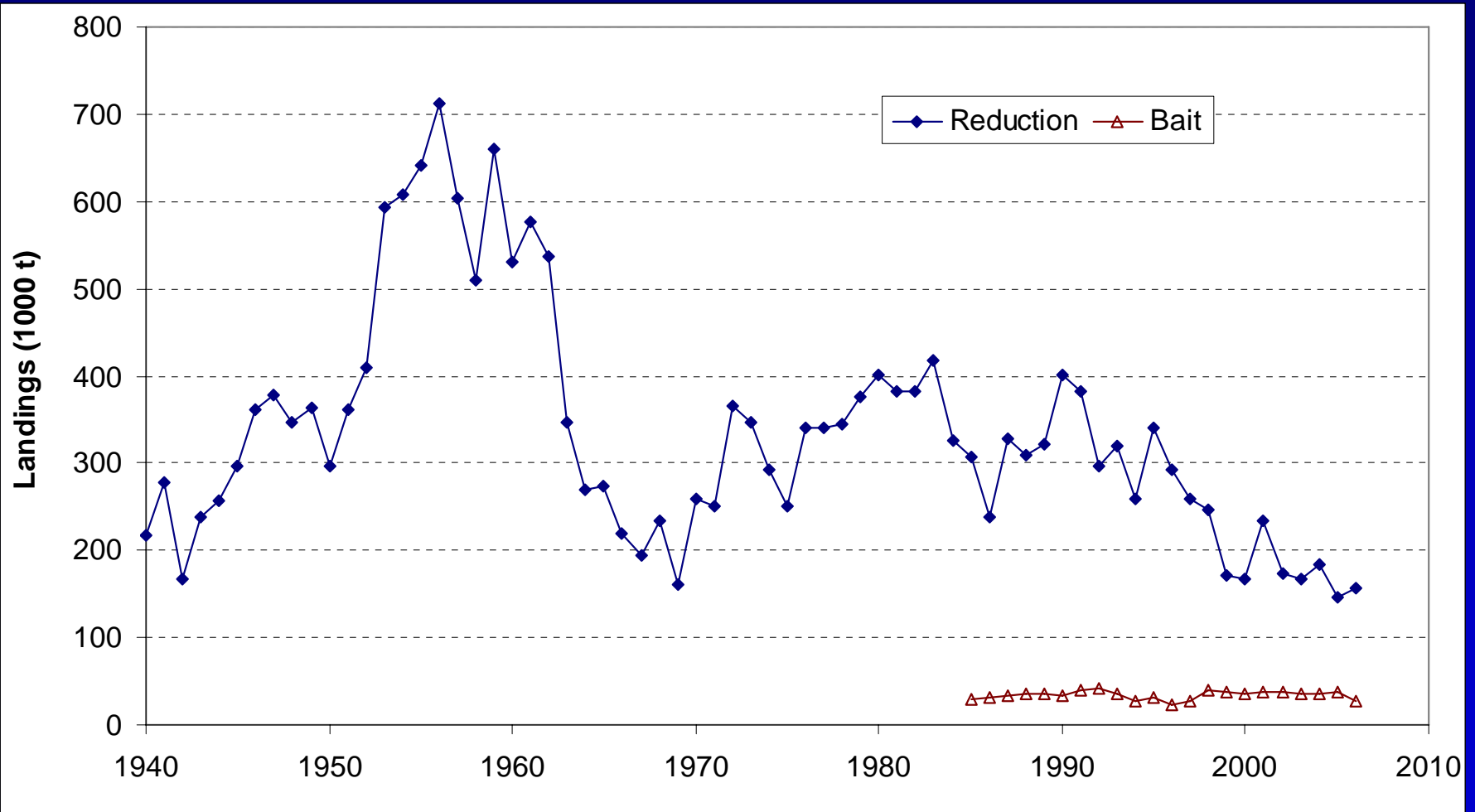


Coastwide Stock Status

- **Atlantic menhaden is not overfished**
- **Overfishing is not occurring**

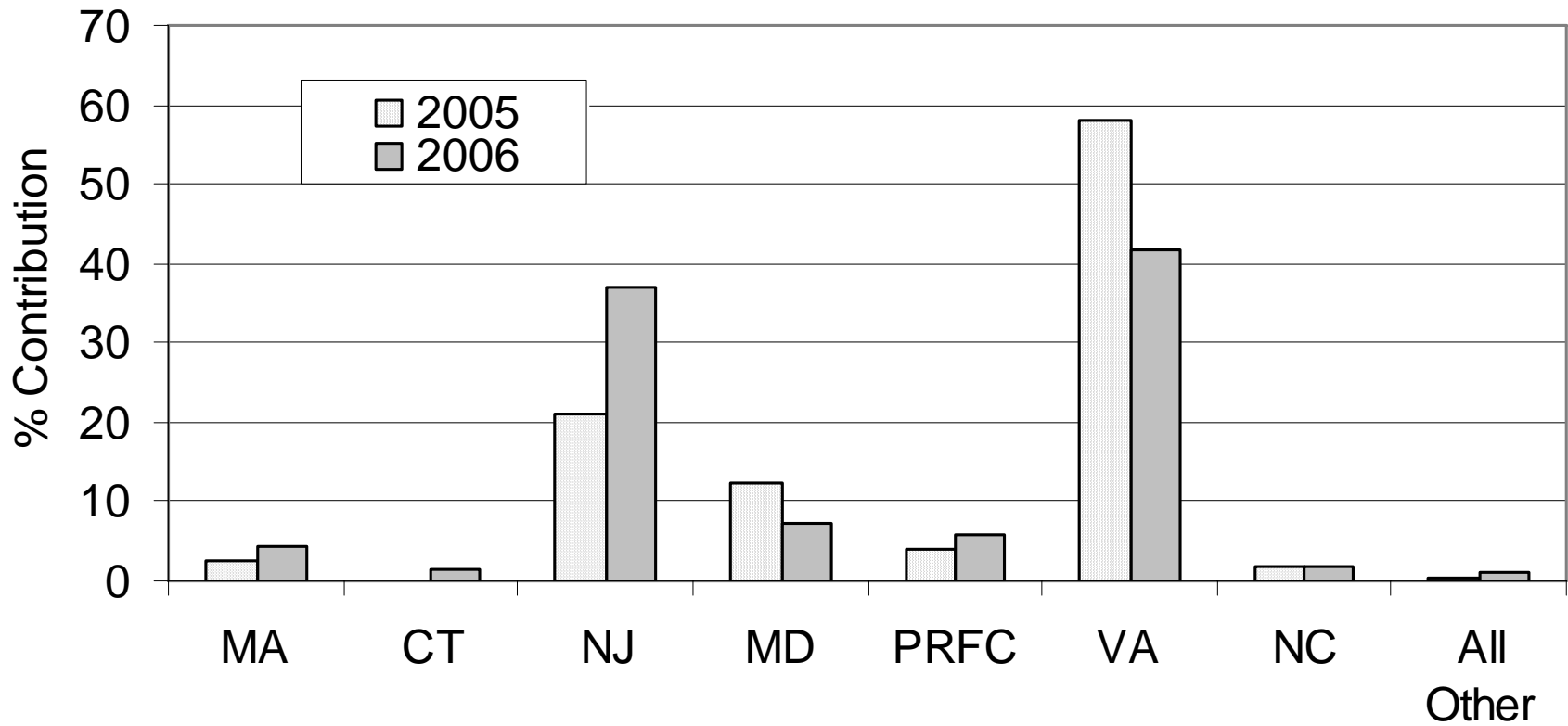


Coastwide Landings





Bait Landings by State





Biological Reference Points

Fishing Mortality Rate (F) Target = 0.75

F Threshold = 1.18

*** Current F = 56% of threshold**

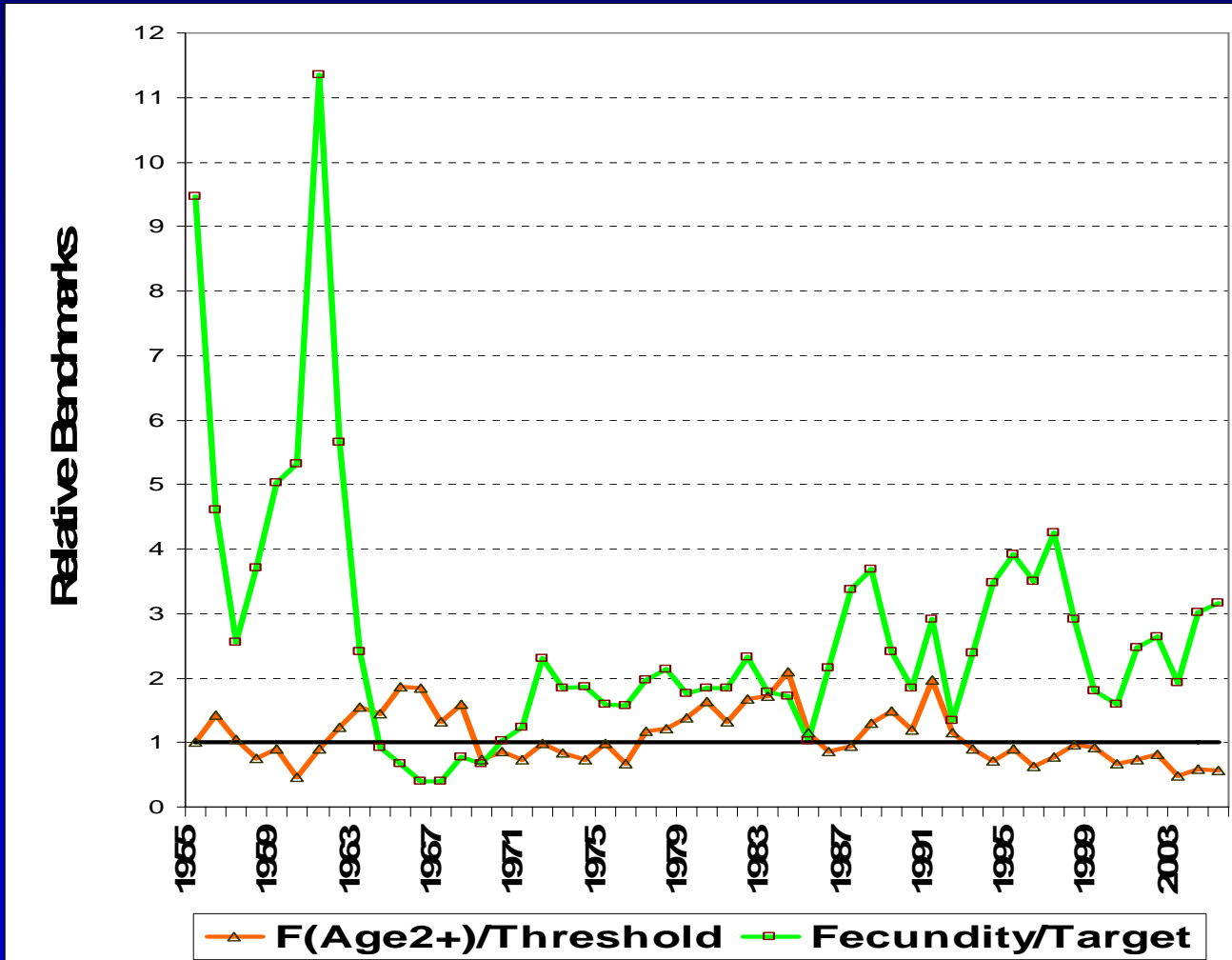
Fecundity Target = 26.6 trillion eggs

Fecundity Threshold = 13.3 trillion eggs

*** Current Fecundity = 317% of threshold**



Historical F and Fecundity





Recruitment

	Current Year Value (2005)	Percentile		
		25th	50th	75th
Recruits to Age 0 (billions)	8.8	9.1	13.2	21.5



Limitations of Assessment

- **Geographic detail limited to coastwide**
 - **Determination of ‘localized depletion’ still an issue**
- **Not capable of answering questions of multispecies interactions**



Next Steps

- **Continue data collection through 2010**
- **Incorporate spatial component into next assessment**
- **Continue improving multi-species modeling**